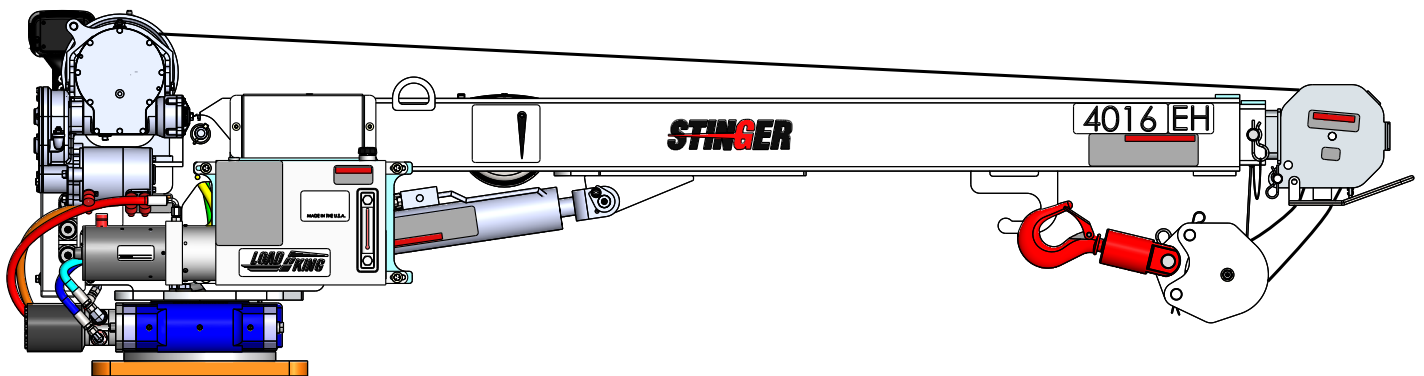




OPERATION, SERVICE, & PARTS MANUAL

for

LK4016EH



For service and maintenance, reach out to the call & information center at
[833-CT1S-911 \(833-281-7911\)](tel:833-CT1S-911) email CIC@CUSTOMTRUCK.COM.

Table of Contents

Definitions Used in This Manual	6
1.0 Specifications	7
1.1 General Specifications.....	7
1.2 Load Chart	8
1.3 Dimensions	9
1.4 Electrical Requirements	10
1.5 Minimum Chassis Requirements	10
1.6 Detailed Crane Functions Described	10
2.0 Safety and Operations	11
2.1 Safety	11
2.2 Responsibilities of Owners, Users, and Operators.....	13
2.3 Features of the Load King LK4016EH Service Crane	13
3.0 Service	16
3.1 Inspection.....	16
3.2 Maintenance	17
3.3 Lubrication	18
Top Level Assembly LK4016EH	24
Crane Assembly 1044773	26
Electrical Power Remote C1047053	28
High Power Relay C1047551	30
Turret Assembly 1044765.....	32
Pump Unit Mounting	34
Valve Cover	36
Boom Assembly LK4016	38
Boom Head Assembly	44
Extension Cylinder	46
Hook Block C1050243.....	48
Boom Rest	50
Hydraulic Hose Kit C1046367	52
Hydraulic Fittings Kit C1046366	56
Decal Kit.....	58
Warranty	63

Company

Load King has been producing quality trailers since 1956. We are located in Elk Point, South Dakota.

Although the trailer industry is an ever-changing environment and we've seen many changes over the years, we have remained committed to the simple philosophy that we will make a reasonable profit through the design, manufacturing, and marketing of top quality products that we can always be proud to call **Load King**. We have not, and will not, compromise in this area.

Quality shows in all facets of an operation, from the moment you make your first phone call for a product inquiry to the time you sell your used equipment and realize you've received top dollar on your sale. We continue to strive for excellence in every area and never quit trying to improve. We have earned our reputation believing that quality is value and value sells products.

Through our shared Engineering, Marketing and Sales teams, **Load King** and Custom Truck One Source bring that tradition of quality and value to another market with the **Load King** LK4016EH Service Crane.






About Custom Truck One Source

Beginning in February of 2015, three family-owned and operated companies (Custom Truck & Equipment, Utility Fleet Sales, and Forestry Equipment of VA) joined together to form what is now Custom Truck One Source. Shortly after its inception, UCO Equipment became a part of the CTOS family along with TNT Equipment six months later. In December 2015, CTOS welcomed its sixth company under its brand, **Load King**, a leading manufacturer of high-quality and customizable trailers.

The announcement of the partnership represented the platform's collective commitment to the continued growth and dominance of each legacy company's individual offerings, now compounded to leverage the expertise of the team and, ultimately, better serve loyal CTOS customers all over the world. CTOS will build upon the market positions of each legacy company, while serving as a single source supplier of specialty equipment and services for the utility and heavy equipment industries. The utility and heavy equipment platform collectively offers sales, rentals, parts and after market services, remanufacturing, customized equipment and transportation.

Definitions Used in This Manual

The following table describes text and symbols used to highlight important information.

Signal Word	Symbol	Explanation
DANGER		Danger is used to alert readers about an immediate and serious hazard that will likely be fatal.
WARNING		Warning is used to alert readers about the potential for serious injury or death or serious damage to equipment.
CAUTION		Caution is used to alert readers about the potential for anything from moderate injury to serious equipment damage or destruction.
READ		Read is used to alert readers of information to be read on machinery.
NOTE		Note is used for a tip or suggestion to help readers carry out a procedure successfully.

1.0 Specifications

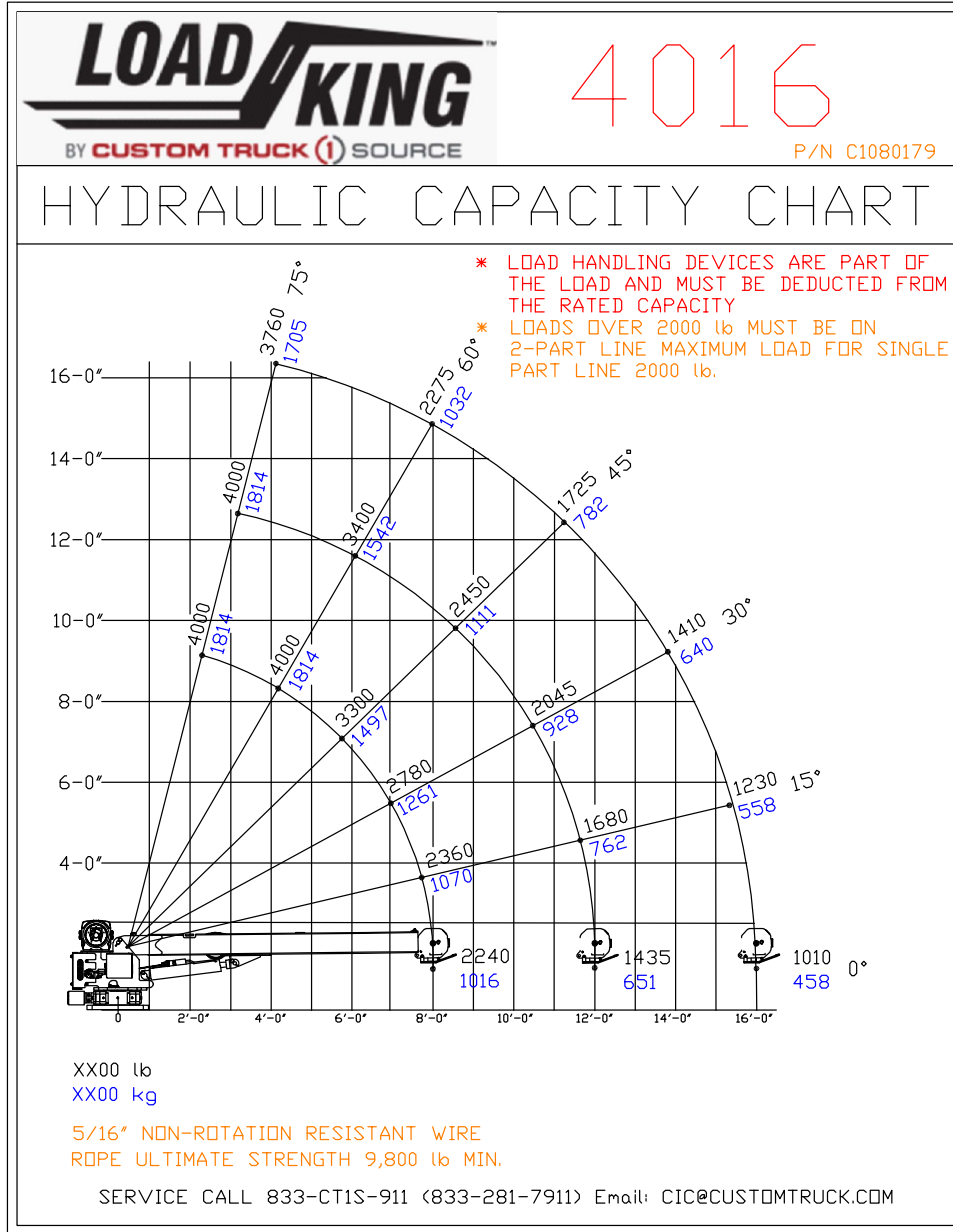
Description

The **Load King** LK4016EH Service Crane is electric-hydraulically powered with control for all functions. The crane is provided with remote control which utilizes a Cervis controller. Maximum reach is 16 feet and boom elevation varies from -5 to +75 degrees. Loads can be controlled at angles below level as well as above level. Rotation is 370 degrees total.

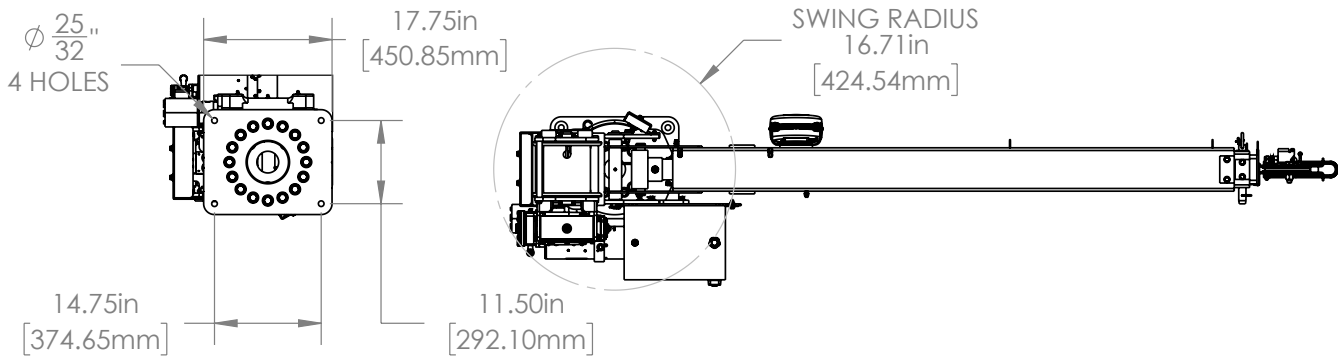
1.1 General Specifications

LK4016EH Crane Specifications	
Crane Rating	19,000 ft.-lbs. (2.21 ton-m)
*ft.-lbs. is the horizontal distance from the center of rotation to the load line × the weight of the load	
Horizontal Reach	16' 0" (4.88 m)
Hydraulic Extend	48" (1.22 m)
Crane Weight	1090 lbs. (494.42 kg)
Center of Gravity	17.5" (0.44 m) Forward of Centerline
Load Line	5/16" IWRC × 80 ft. (5.56 mm × 18.9 m)
Storage Height	27.9" (0.71 m)
Storage Length	9' 4" (2.86 m)
Mounting Plate	1 1/4" Thick (31.8mm)
Bolt Pattern	14.50" × 11.50" (368 mm × 292 mm)
Mounting Bolts	Hex Head Cap Screws 3/4-16" × 3 1/2", GR8, ZN

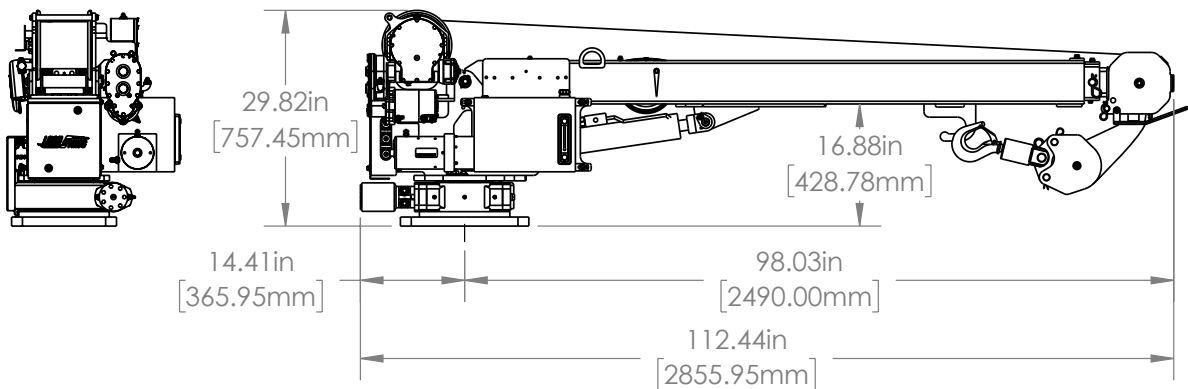
1.2 Load Chart



1.3 Dimensions



MOUNTING HOLE PATTERN



1.4 Electrical Requirements

- Voltage: 12VDC
- Alternator: 165 amps minimum
- Battery: 130 minute reserve capacity minimum

1.5 Minimum Chassis Requirements

- Rated Bending Moment (RBM)- 210,600 in-lbs
- Gross Vehicle Weight Rating (GVWR)- 10,500 lbs (4,763 kg)

1.6 Detailed Crane Functions Described

Rotation is 370 degrees non-continuous and is provided by a hydraulic motor driven worm gear slewing drive. Patented hourglass worm technology provides increased gear strength, and the drive is rated IP55 for dust and water incursion.

Boom Extend and **Boom Retract** functions are provided by double-acting cylinder and a manual extension. The single cylinder extends/retracts the 2nd stage boom. The handles on the tip section are used to manually extend/retract the 3rd stage boom. The cylinder has a counterbalance valve to hold the boom extension above and below level.

Hoist Up and **Hoist Down** functions are provided by an electric/hydraulic motor connected to a gear box and cable drum with holding brake.

Boom Up and **Boom Down** functions are provided by a double-acting cylinder with a single counterbalance valve on the base end of the cylinder.

Performance Characteristics	
Crane Action	4016EH
Boom Up	12.25 sec
Boom Down	13.25 sec
Rotation (370°)	31 sec
Boom Extend	23.25 sec
Boom Retract	20.25 sec
Winch Speed	30 fpm

2.0 Safety and Operations

2.1 Safety

It is the Operator's responsibility to safely operate and maintain this crane, and adhere to all applicable standards. Be aware of and observe all federal, state, local, and employer safety standards including ASME B30.5 Mobile and Locomotive Cranes, and OSHA 1910.180. If required by state or local standards you may need to become a certified operator before operating this crane.



Prior to operating this unit, every person working with the Load King crane should read and understand all material in this manual. Safe operation requires that the crane not be overloaded, misused, or altered; all of which may void the warranty. Operators must understand the lift capacity ratings as shown on the load chart. Look at the horizontal distance from the center of rotation and the angle of boom elevation to determine the correct load rating.



For the Operator's protection, there are warning labels and safety devices on the Load King Crane that are NOT to be tampered with or removed. It is important for the operator to read all warning labels before operating the Load King Crane. It is the owner's responsibility to ensure that the operator and workers on and around the crane understand all of the safety warnings herein and affixed to the machine. **Do not operate the crane if safety labels are missing or damaged.**



WARNING

This crane is not electrically insulated. It must never be used near energized power lines. Load King cranes, load lines, and the load handled must always maintain a safe minimum distance from electrically energized power lines. See ASME B30.5 for safe minimum distances and your employer's work rules.



DANGER

This crane must be properly maintained and regularly inspected for safe and efficient operation. Failure to maintain and operate this crane in accordance with the instructions of this manual can result in serious injury or death.

**DANGER**

Never alter hydraulic valve settings unless recommended by factory-authorized personnel. This may result in equipment malfunction or failure, causing serious injury or death.

**WARNING**

Never alter the Hydraulic Overload Protection (HOP) system. Its function is to protect the crane from overload.

**DANGER**

Never alter the Anti-Two Block (A2B). The A2B's is to prevent contact between the load block and the boom tip sheave. The load may be suddenly dropped should contact occur, resulting in serious injury or death.

2.2 Responsibilities of Owners, Users, and Operators



CAUTION

The Load King LK4016EH Service Crane is designed for material handling and specifically for hoisting loads within the range of the provided Load Chart.

Owners, users, and operators have specific responsibilities as designated by OSHA 1910.180 and ASME B30.5 and state or local requirements. Failure to comply with these regulations can result in citations and fines.



DANGER

Failure to comply with the regulations above may result in equipment or property damage, serious injury, or death.

This manual covers equipment features and use of the Load King LK4016EH Service Crane.

2.3 Features of the Load King LK4016EH Service Crane

2.3.1 The **Load King** crane has specific features designed to enhance safety and contribute to ease of operation.

Remote controls of all functions are provided by the pistol grip radio transmitter that sends commands to the turret mounted receiver. The transmitter is linked only to its receiver by transmitted identity codes. The remote system complies with J1939. The overload protection system controls are programmed into the receiver.

To begin operations, twist the E-Stop clockwise until it pops up. Hold the Engine Start switch for a few seconds until the TX and RX lights are flashing. This indicates the remote and receiver are linked up. The remote will time out after 15 minutes of inactivity. To restart the remote, engage the Engine Start switch again. For the 4016EH, the crane functions as a bang-bang system.



The Emergency Stop is activated by pushing down on the E-Stop button. Release the E-Stop by turning the button clockwise.

In the event of a transmitter or receiver failure, the tether cable can be connected to restore operations.

2.3.2 The Anti-Two Block (A2B) feature prevents contact between the load block and the boom tip sheave.

	<p>WARNING</p>
<p>If the load block makes contact with the boom tip sheave, the load may be suddenly dropped and could result in serious injury or death.</p>	

The A2B is active at all times until disengaged by releasing the A2B switch. Adjust the A2B frame bracket to disengage the switch at contact. When the A2B has made contact, the **Hoist Up** and **Boom Extend** functions are disabled. To exit the A2B active condition, reverse travel by Hoisting Down or retracting the boom.

The A2B feature also assists in stowing the hook for travel. The A2B will stop **Hoist Up** as the load line is tightened to prevent stowing damage and relieve the load line of tension when stowed. Check the adjustment of the A2B frame bracket to disengage the A2B switch just before the load block meets the stow bumper.

2.3.3 Hydraulic Overload Protection (HOP) is active at all times to help prevent overload situations. The pressure transducer located on the lift cylinder sends a pressure signal to the controller module. If the hydraulic pressure is above 1900 psi, the HOP alarm sounds and the following functions are disabled: **Hoist Up**, **Boom Extend**, and **Boom Down**. To exit the HOP active condition, retract the boom a short distance to request HOP exit. Then engage any movement function that reduces the load on the boom, such as **Hoist Down** (to the ground), **Boom Retract**, or **Boom Up** until the alarm is silent.

2.3.4 Hydraulic Hoist

The hoist is intended to be used only for lift loads vertically.



WARNING

Do not drag loads sideways using the Hoist or Boom functions. Undo stresses may cause component or boom failure, even for light loads resulting in serious injury or death.

The hoist is planetary geared for speed and efficiency. It is equipped with a spring applied hydraulically-released brake. The hoist speed is 30 FPM (feet per minute) single-parted.

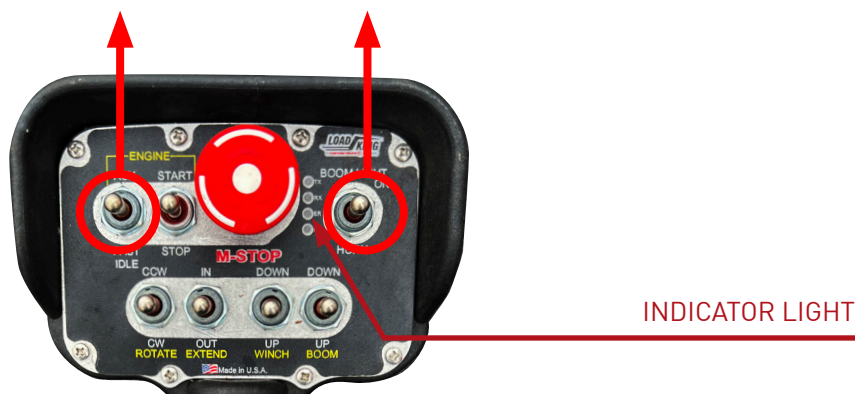
The Load Block C1050243 enables the crane load line to be two-parted. The end of the load line is snatched back to the boom tip instead of connected to the hook.

2.3.5 Boom Elevation

The lift cylinder raises and lowers the boom. It has a single counterbalance on the base end. No counterbalance is necessary for the rod end.

2.3.6 Boom Lift Function Manual Override Procedure

Hold the AUX and BOOM LIGHT function in the **UP** position for 5 seconds to enter **manual override mode**. On the remote, a red light will turn on indicating manual override mode has been activated. The crane will go back into normal operating mode after 3 seconds of manual override mode.



WARNING

Crane safety features are bypassed when operated manually. Make sure the load is within the crane's lifting capacity while it is operating and that the load block does not touch the boom.

3.0 Service

This unit must be regularly maintained and inspected for safe and efficient performance. See Section 3.3 for Maintenance Schedule.

3.1 Inspection

Inspect the unit daily if in daily use or periodically if in occasional use. Determine the inspection intervals according to Ch. 5 Inspection, Testing, and Maintenance Requirements of ASME B30.5

Checklist-

- Check for loose or worn parts, missing safety related parts, and damaged parts.
- Check the load line for crushed strands and broken strands.
- Inspect that all lubricated items have been lubricated.
- Check the Transmitter that all functions are operable. Check the E-Stop.
- Check the Anti-Two Block (A2B) switch by lifting the A2B frame to disengage the switch. The Hoist should not raise with the A2B system disengaged.
- Check for hydraulic leaks.
- Test the Hydraulic Overload Protection (HOP) annually. The transducer should cause the HOP to disengage at 1900 psi. The HOP stops the following functions: **Hoist Raise**, **Boom Extend**, and **Boom Lower** until the system pressure is less than 1900 psi. Exiting the HOP alarm mode can be accomplished by lowering the load to the ground, retracting the boom (most effective), or raising the boom.



WARNING

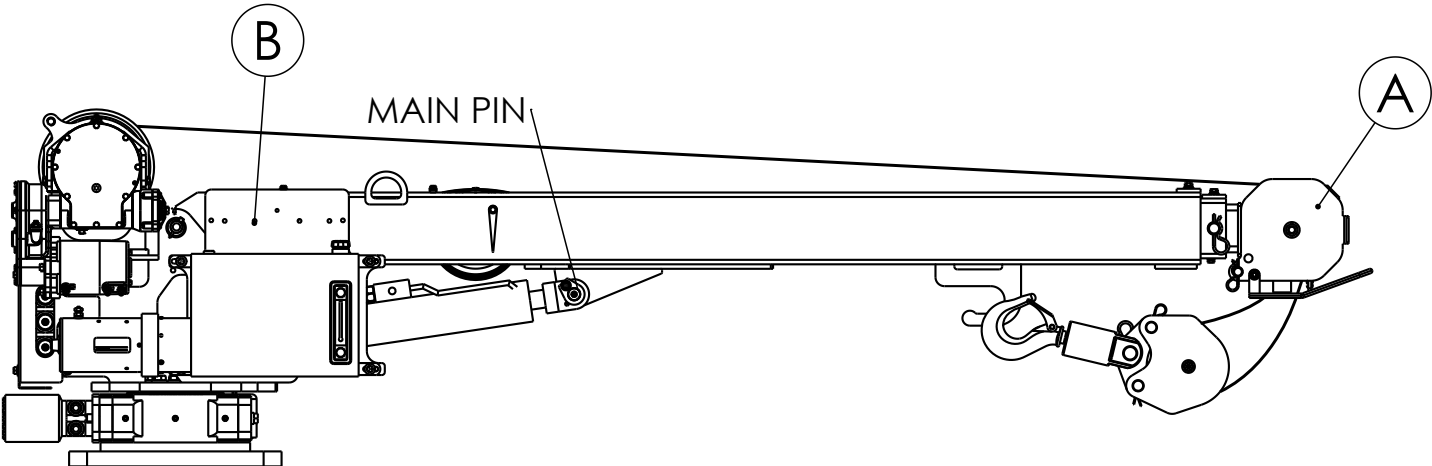
Any deficiencies found should be corrected immediately and before operation of the crane. Failure to do so could result in equipment malfunction or failure and can result in serious injury or death.

3.2 Maintenance



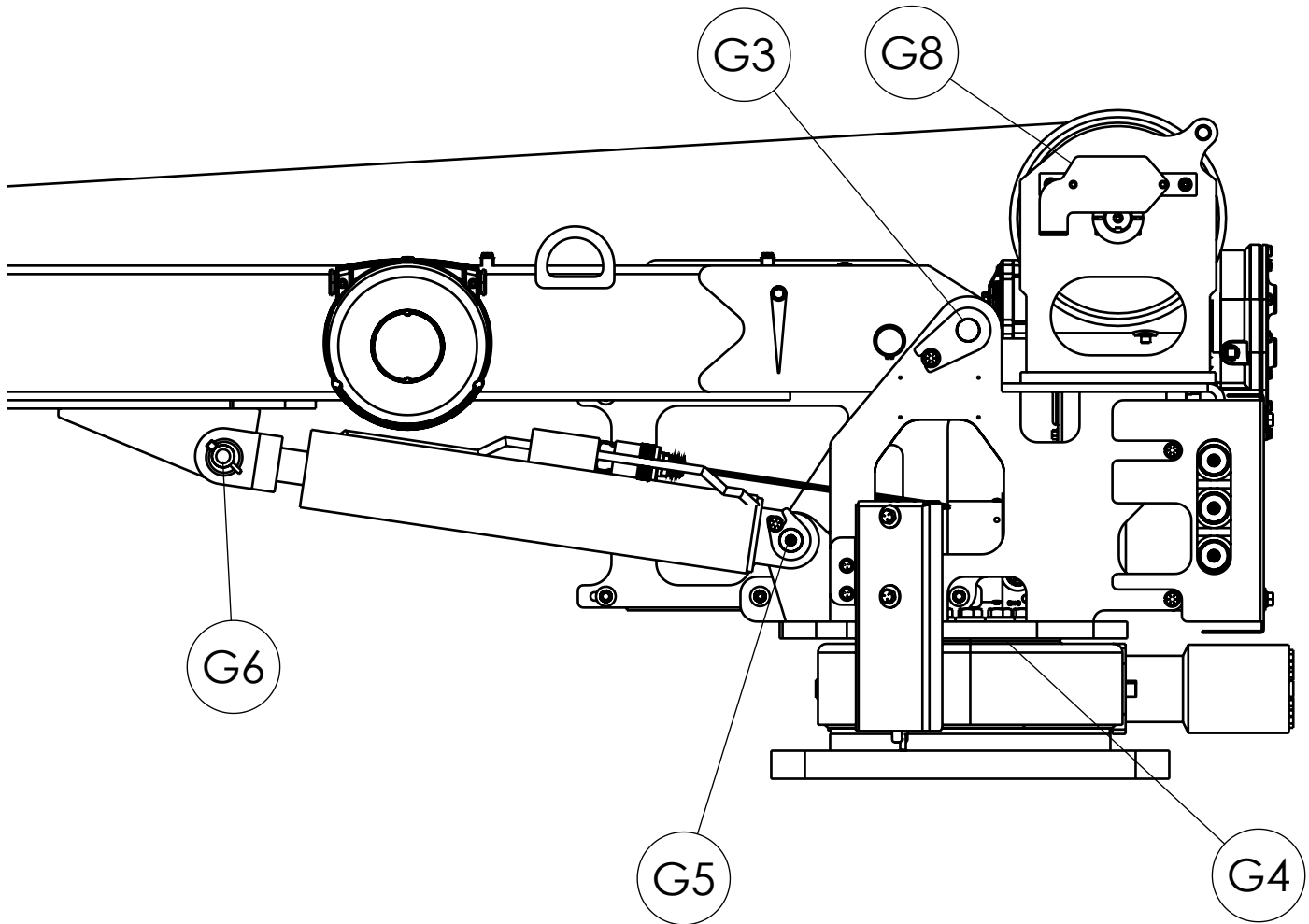
DANGER

If removal of the main pin is ever necessary, secure the boom tip with a 2500 lb. freight strap to the rear of the 1st Stage Boom as shown below. The booms can extend out or separate with the main pin removed. Failure to do so could result in equipment malfunction or failure and can result in serious injury or death.

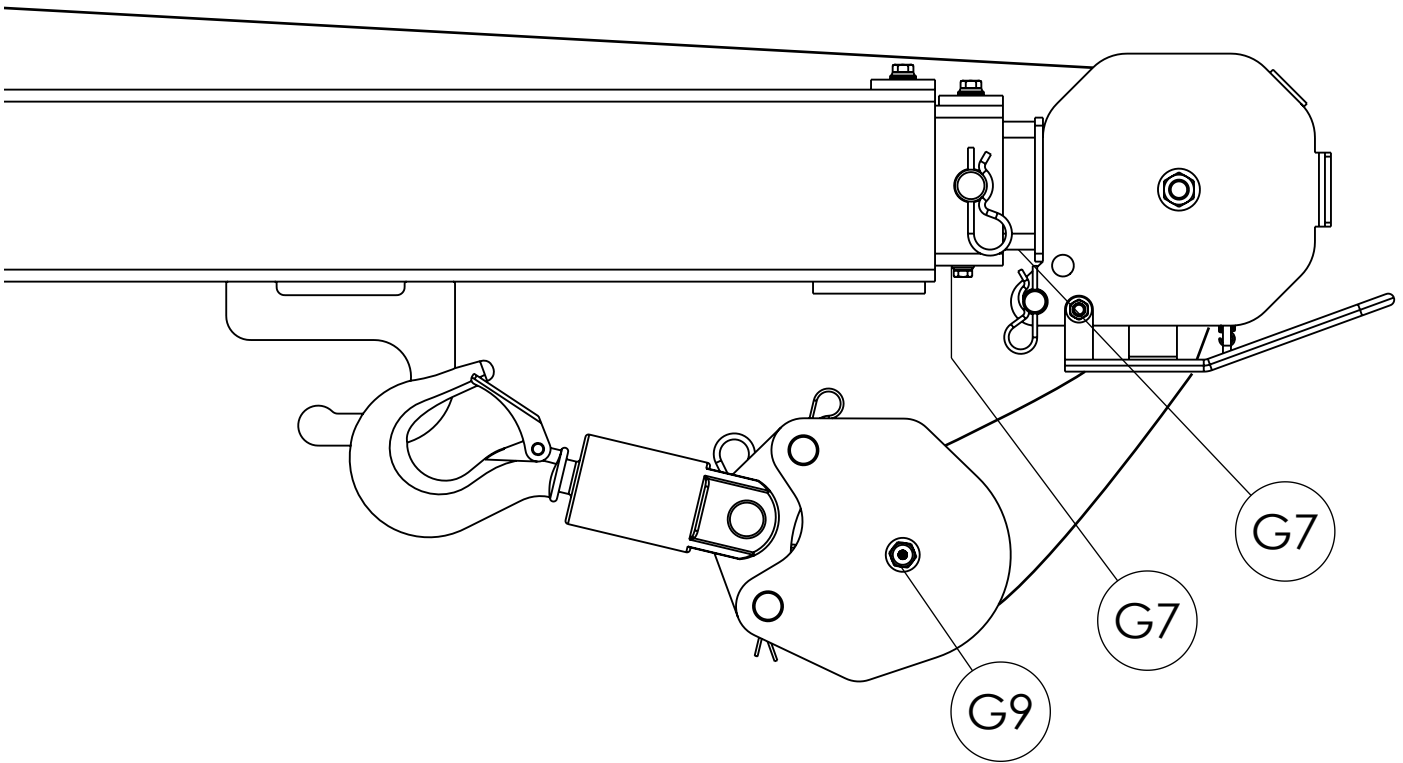


3.3 Lubrication

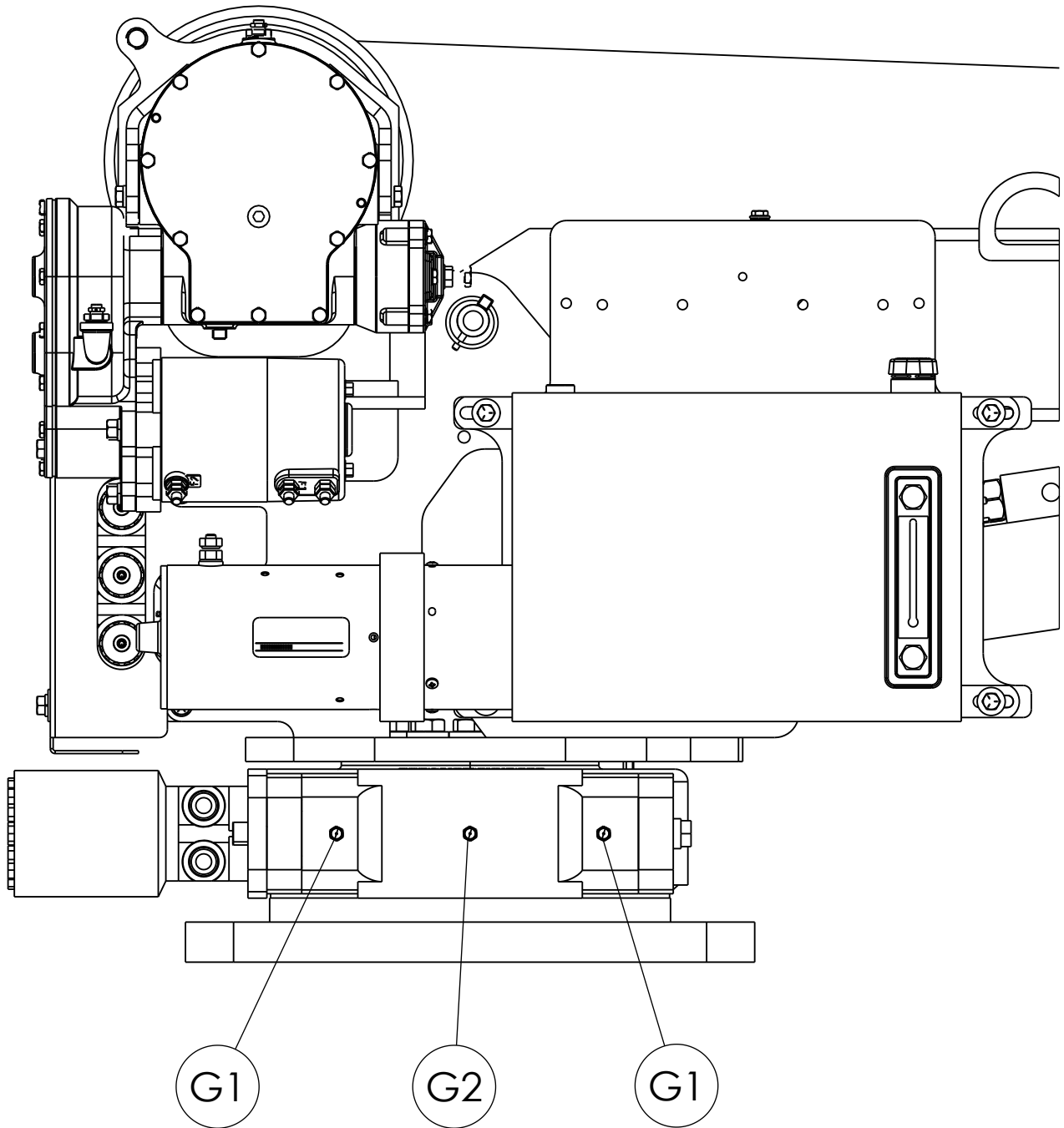
Lubricate the crane at the lube points shown in the diagram below. Use High Pressure Grease such as Lubricate Multi-Lube A or Shell Gadus S2.



ITEM	DESCRIPTION	QTY	LUBRICANT	HOURS OF OPERATION
G1	SLEW DRIVE ROLLER BEARING	2	MULTI-LUBE A	150
G2	SLEW DRIVE WORM THREAD	1	MULTI-LUBE A	150
G3	BEARING 1ST STG BOOM	2	MULTI-LUBE A	8
G4	SLEW DRIVE BALL BEARINGS	2	MULTI-LUBE A	150
G5	LIFT CYL. BASE END	1	MULTI-LUBE A	8
G6	LIFT CYL. ROD END	1	MULTI-LUBE A	8
G7	BOTTOM OF 2ND & 3RD BOOMS	2	LUBE-A-BOOM	8
G8	WIRE ROPE LOAD LINE	1	LIGHT OIL	1 MONTH
G9	HOOK BLOCK PIN	1	MULTI-LUBE A	8

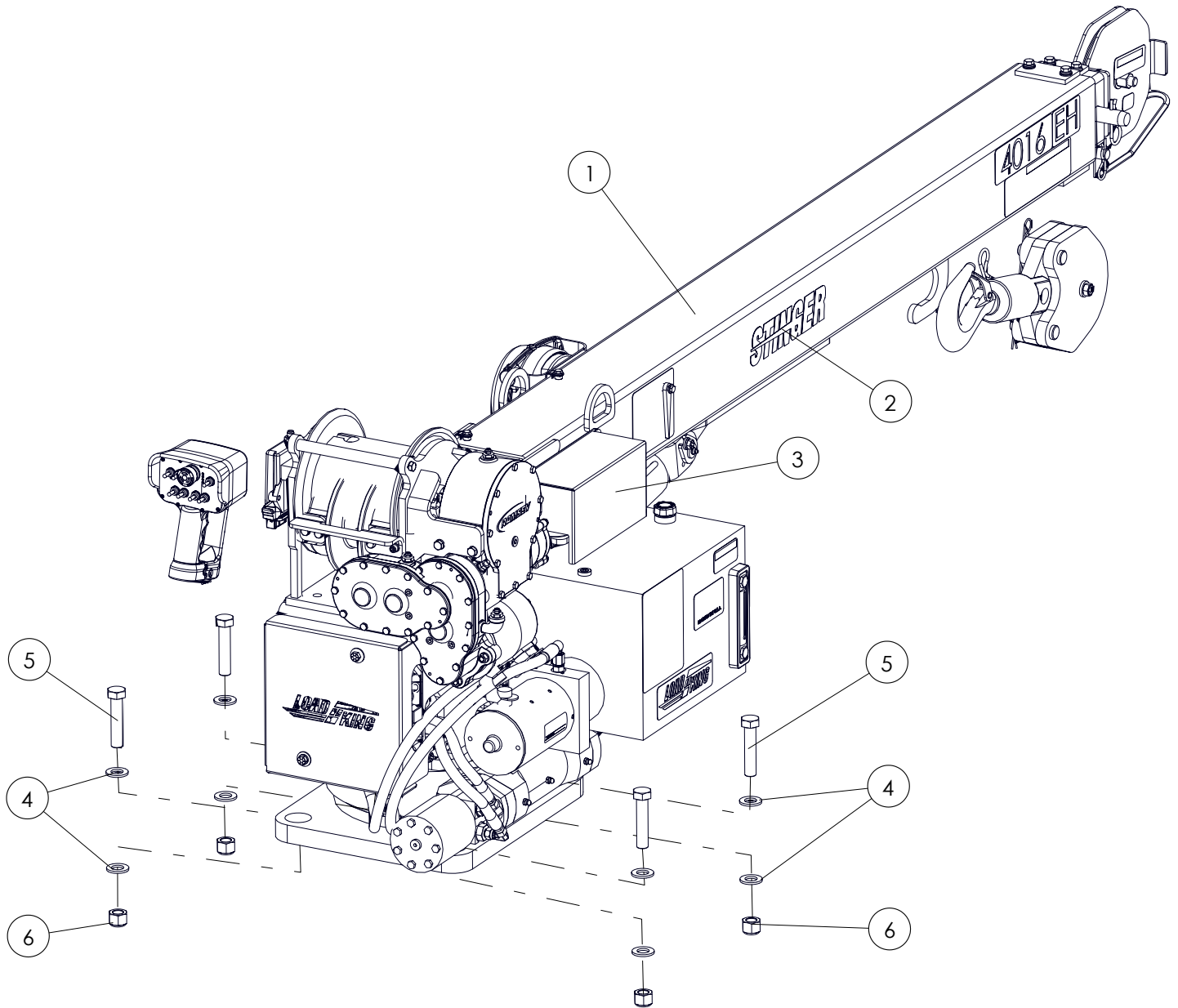


ITEM	DESCRIPTION	QTY	LUBRICANT	HOURS OF OPERATION
G1	SLEW DRIVE ROLLER BEARING	2	MULTI-LUBE A	150
G2	SLEW DRIVE WORM THREAD	1	MULTI-LUBE A	150
G3	BEARING 1ST STG BOOM	2	MULTI-LUBE A	8
G4	SLEW DRIVE BALL BEARINGS	2	MULTI-LUBE A	150
G5	LIFT CYL. BASE END	1	MULTI-LUBE A	8
G6	LIFT CYL. ROD END	1	MULTI-LUBE A	8
G7	BOTTOM OF 2ND & 3RD BOOMS	2	LUBE-A-BOOM	8
G8	WIRE ROPE LOAD LINE	1	LIGHT OIL	1 MONTH
G9	HOOK BLOCK PIN	1	MULTI-LUBE A	8



ITEM	DESCRIPTION	QTY	LUBRICANT	HOURS OF OPERATION
G1	SLEW DRIVE ROLLER BEARING	2	MULTI-LUBE A	150
G2	SLEW DRIVE WORM THREAD	1	MULTI-LUBE A	150
G3	BEARING 1ST STG BOOM	2	MULTI-LUBE A	8
G4	SLEW DRIVE BALL BEARINGS	2	MULTI-LUBE A	150
G5	LIFT CYL. BASE END	1	MULTI-LUBE A	8
G6	LIFT CYL. ROD END	1	MULTI-LUBE A	8
G7	BOTTOM OF 2ND & 3RD BOOMS	2	LUBE-A-BOOM	8
G8	WIRE ROPE LOAD LINE	1	LIGHT OIL	1 MONTH
G9	HOOK BLOCK PIN	1	MULTI-LUBE A	8

Top Level Assembly LK4016EH



Top Level Assembly LK4016EH

ITEM NO.	PART NUMBER	DESCRIPTION	QTY
1	1044773	ASSY, GENERAL BOOM/TURRET STINGER LK4016 EHC PWR UNIT REMOTE	1
2	C1046517**	INSTALL, DECALS STINGER LK4016EH SERVICE CRANE	1
3	C1047053	INSTALL, ELECTRICAL EHC PWR REMOTE SERVICE CRANE	1
4	WSH1-X7500008Z0	WASHER, 3/4, GR8, ZN	8
5	HHCS-F750C508Z1	HEX HEAD CAP SCREW, 3/4-16 X 3 1/2 LEN, GR8, ZN, FULL THREAD	4
6	NUT3-F7500008Z0	NYLON LOCK NUT, 3/4-16, GR8, ZN	4
7	C1052996*	PACKET, MANUALS SERVICE CRANE STINGER LK4016	1
8	C1046366**	KIT, FITTINGS LK4016 EH PWR UNIT CRANE	1
9	C1046367***	KIT, HOSE 3215/4016 EH PWR UNIT CRANE	1
10	1025189*	HARNESS, JUMPER BODY PLUG TO CRANE PLUG	1

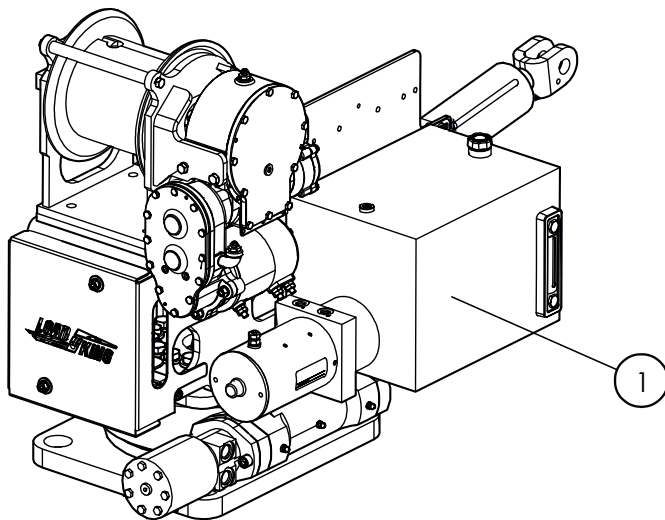
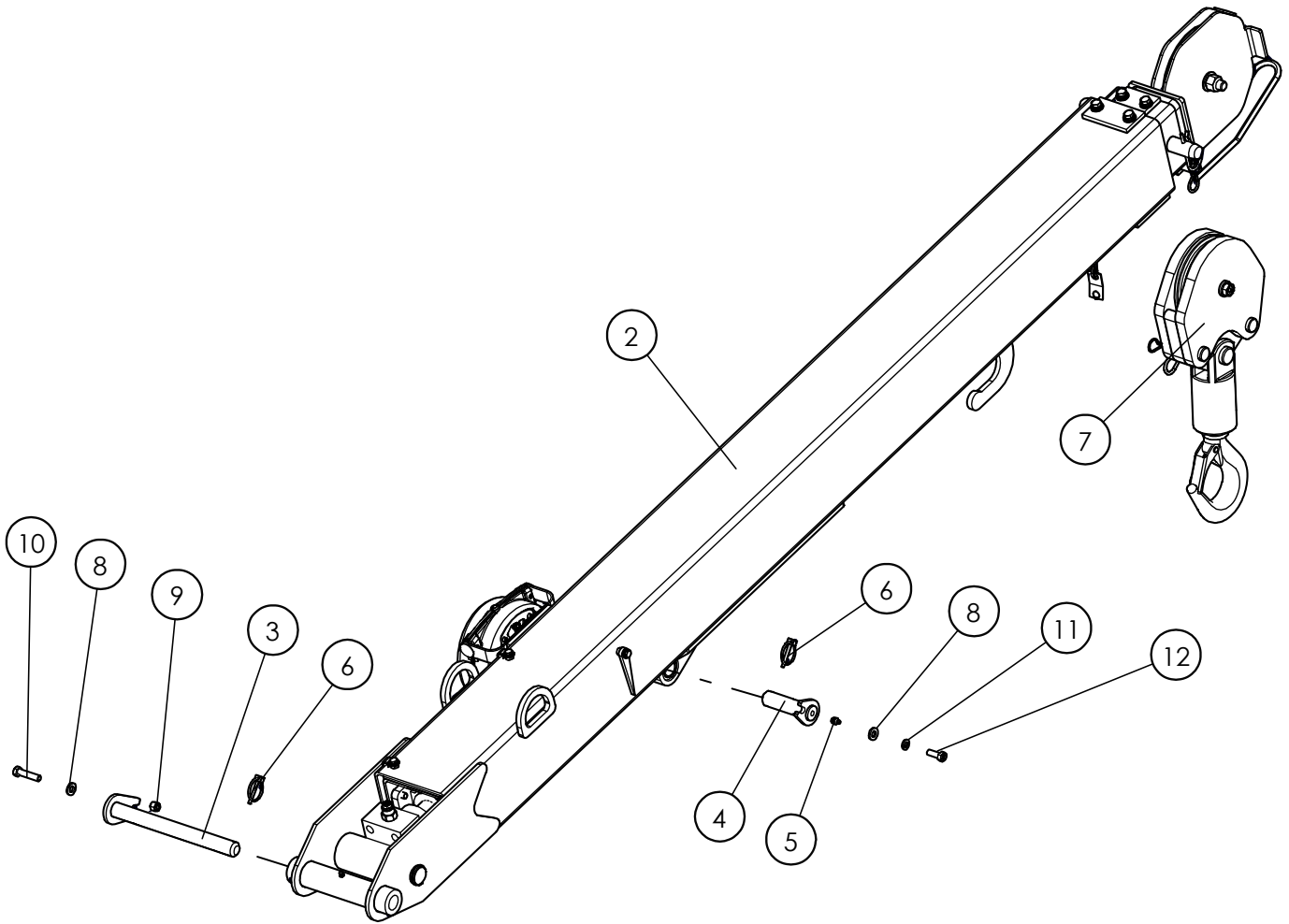
* NOT SHOWN IN DIAGRAM

**DECAL KIT ON PAGE 58

**HYDRAULIC FITTINGS KIT C1046366 ON PAGE 56

***HYDRAULIC HOSE KIT C1046367 ON PAGE 52

Crane Assembly 1044773



Crane Assembly 1044773

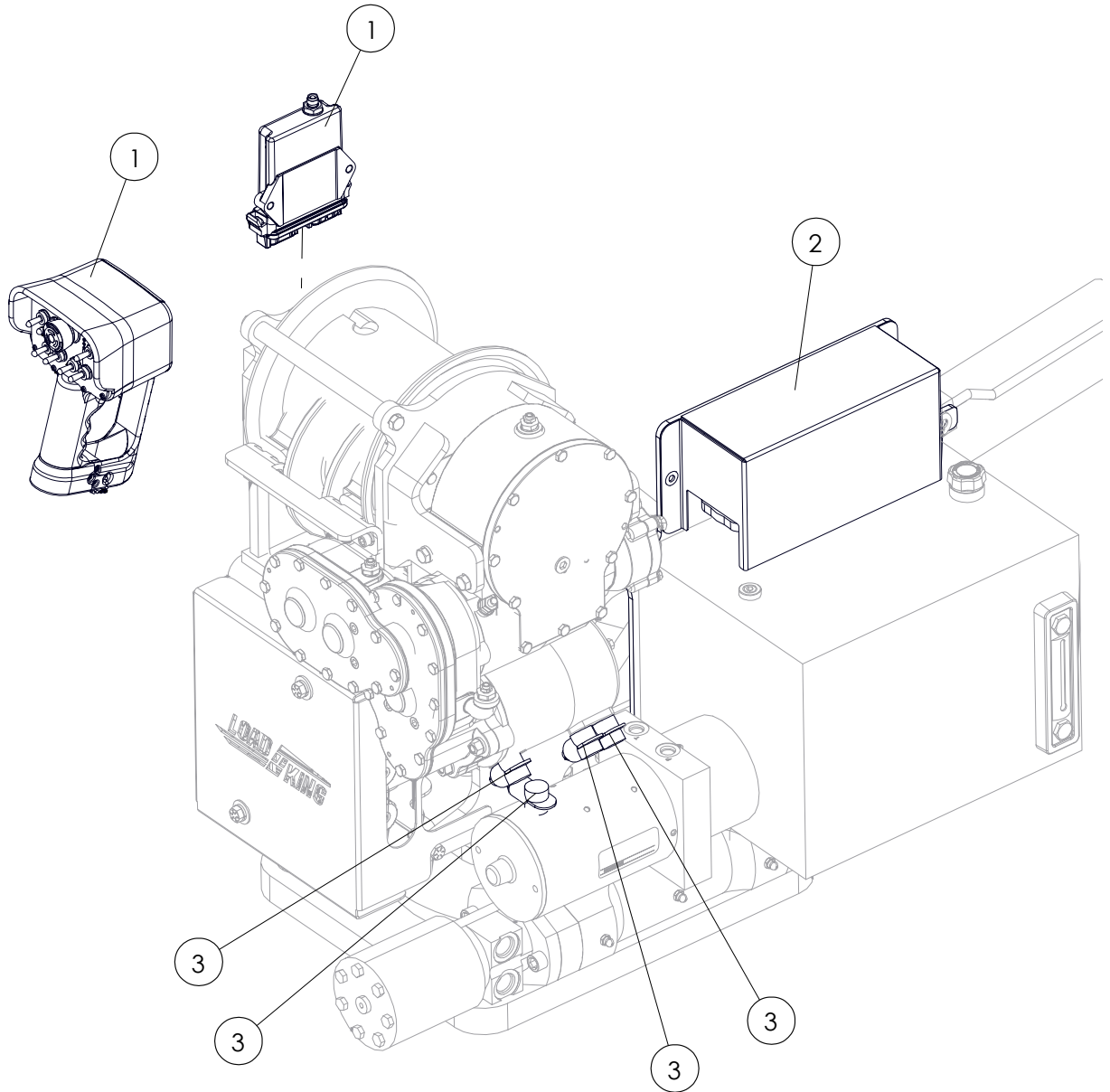
ITEM NO.	PART NUMBER	DESCRIPTION	QTY
1	1044765*	ASSEMBLY, TURRET 4016 EHC PWR UNIT REMOTE	1
2	1040695**	ASSY, BOOM LK4016	1
3	1036130	WELDMENT, PIN BOOM PIVOT BASE MOUNT	1
4	1036077	WELDMENT, PIN LIFT CYLINDER BASE MOUNT	1
5	1036132	ZERK, GREASE FITTING STRAIGHT 3/8-24 UNF ZP	1
6	C1046764	PIN, LINCH 3/16 X 1-5/16 ZP	2
7	C1050243***	ASSY, TRAVELING BLOCK LK4016	1
8	1036133	FLATWASHER, 3/8" ZP	3
9	1000189	LOCKNUT, TOP 3/8-16 UNC ZP	1
10	1001348	HHCS, 3/8-16 UNC X 1-3/4" LG GR 8 ZP	1
11	1001183	LOCKWASHER, SPLIT 3/8" ZP	1
12	1000261	HHCS, 3/8-16 UNC X 1" LG GR 8 ZP	1

* TURRET ASSEMBLY 1044765 ON PAGE 32

** BOOM ASSEMBLY LK4016 ON PAGE 38

*** HOOK BLOCK C1050243 ON PAGE 48

Electrical Power Remote C1047053



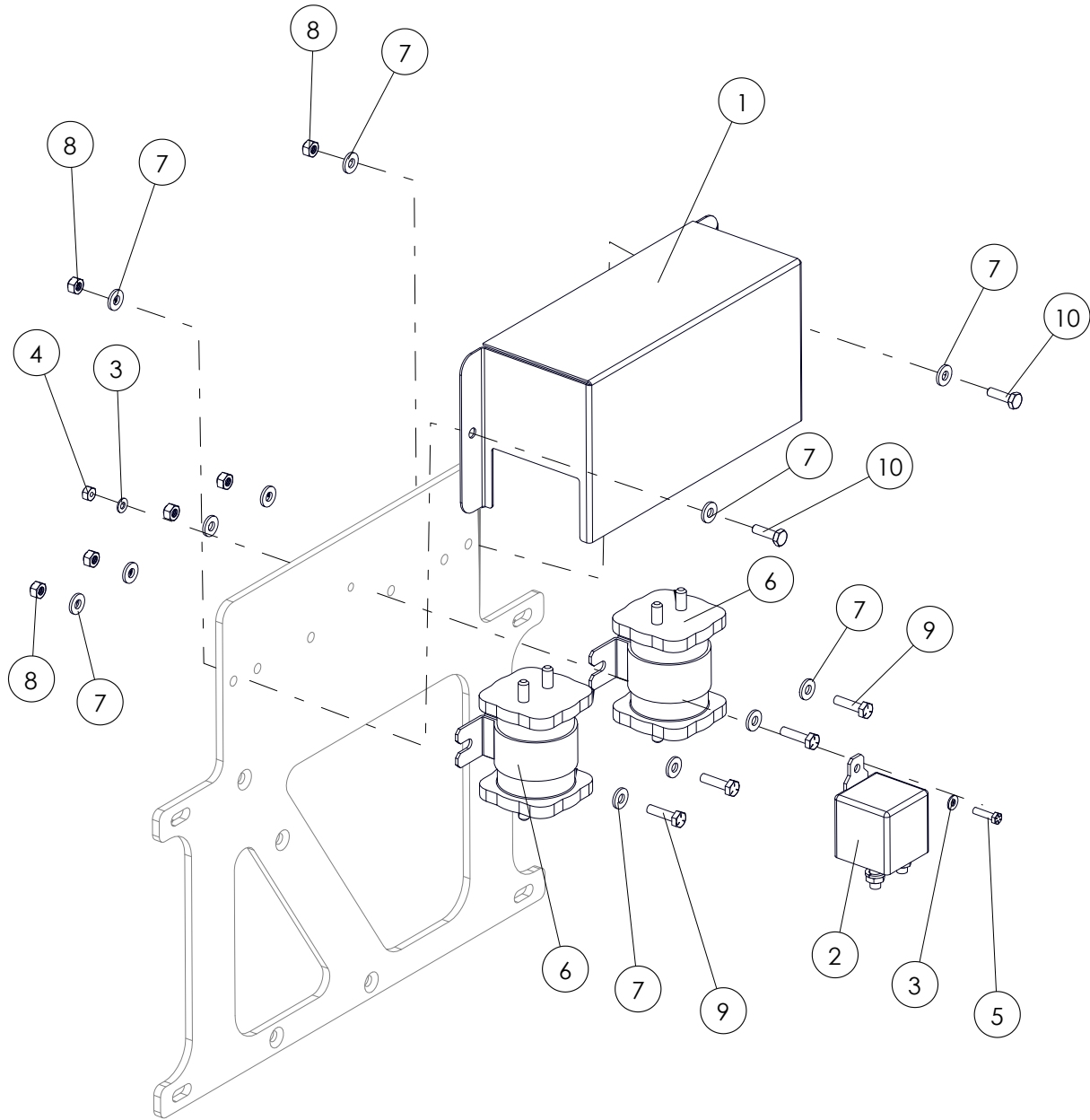
Electrical Power Remote C1047053

ITEM NO.	PART NUMBER	DESCRIPTION	QTY
1	1037825	CERVIS PISTOL GRIP & BASE	1
2	C1047551*	ASSY, HIGH POWER RELAY EHC PWR REMOTE	1
3	C1056678	RED TERMINAL BOOT	4
4	C1047115**	TETHER CABLE	1
5	C1047380**	EHC PWR REMOTE SERVICE CRANE HARNESS	1

* HIGH POWER RELAY C1047551 ON PAGE 30

** NOT SHOWN IN DIAGRAM

High Power Relay C1047551



High Power Relay C1047551

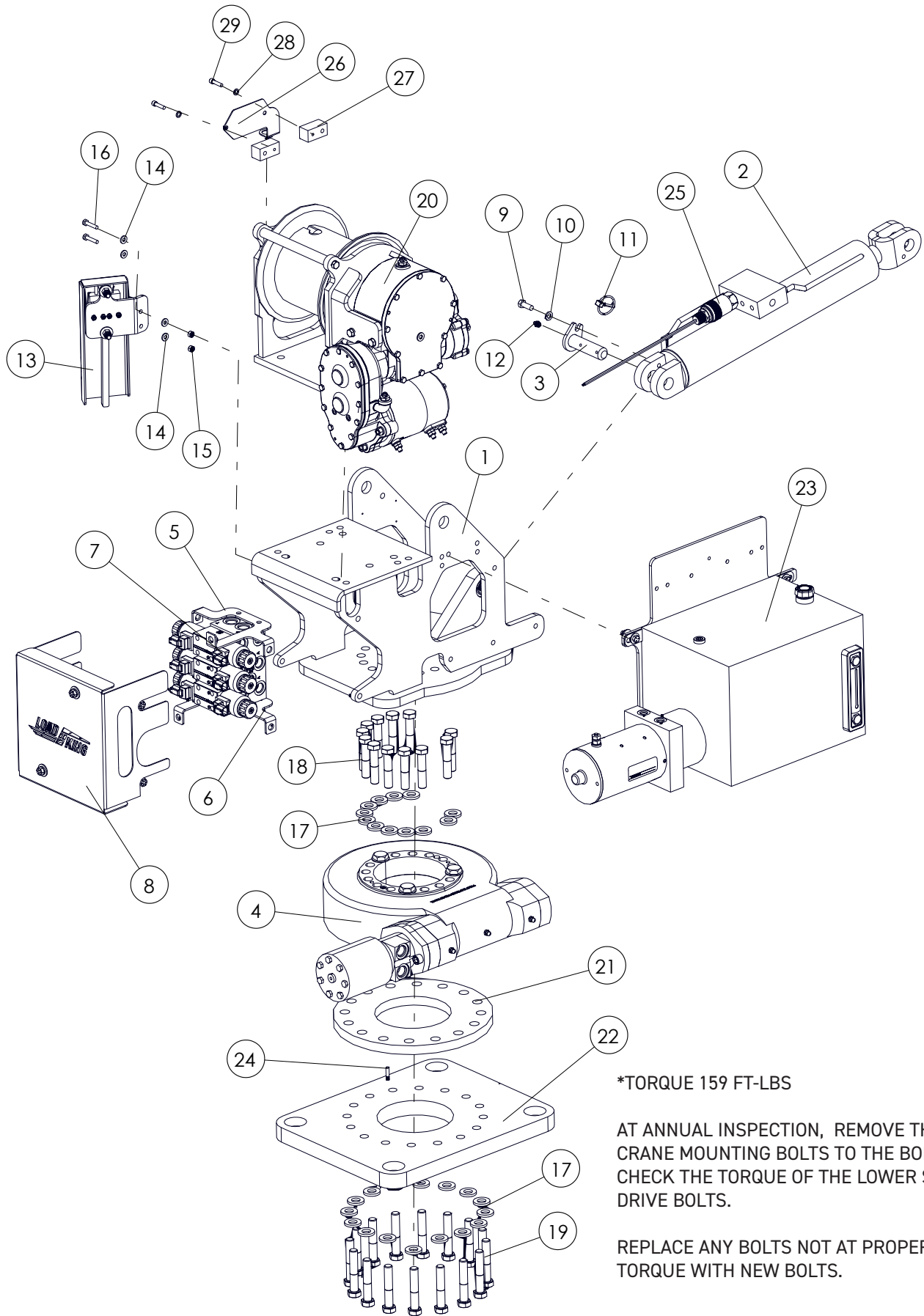
ITEM NO.	PART NUMBER	DESCRIPTION	QTY
1	C1047381	COVER, HIGH POWER RELAY	1
2	C1047515	RELAY, 200A HIGH POWER	1
3	1036057	FLATWASHER, #10 ZP	2
4	1000207	LOCKNUT, TOP #10-24 UNC ZP	1
5	1037796	HHCS, #10-24 UNC X 3/4" LG GR 8	1
6	C1047783	RELAY, DC POWER CONTACTOR 12V 200A	2
7	1000557	FLATWASHER, 1/4" ZP	12
8	1000558	LOCKNUT, TOP 1/4-20 UNC ZP	6
9	1001272	HHCS, 1/4-20 UNC X 1" LG GR 5 ZP	4
10	HHCS-C2508758Z1	HEX HEAD CAP SCREW, 1/4-20 X 7/8 LEN, GR8, ZN, FULL THREAD	2

* TURRET ASSEMBLY 1044765 ON PAGE 32

** BOOM ASSEMBLY LK4016 ON PAGE 38

*** HOOK BLOCK C1050243 ON PAGE 48

Turret Assembly 1044765



***TORQUE 159 FT-LBS**

AT ANNUAL INSPECTION, REMOVE THE CRANE MOUNTING BOLTS TO THE BODY AND CHECK THE TORQUE OF THE LOWER SLEW DRIVE BOLTS.

REPLACE ANY BOLTS NOT AT PROPER TORQUE WITH NEW BOLTS.

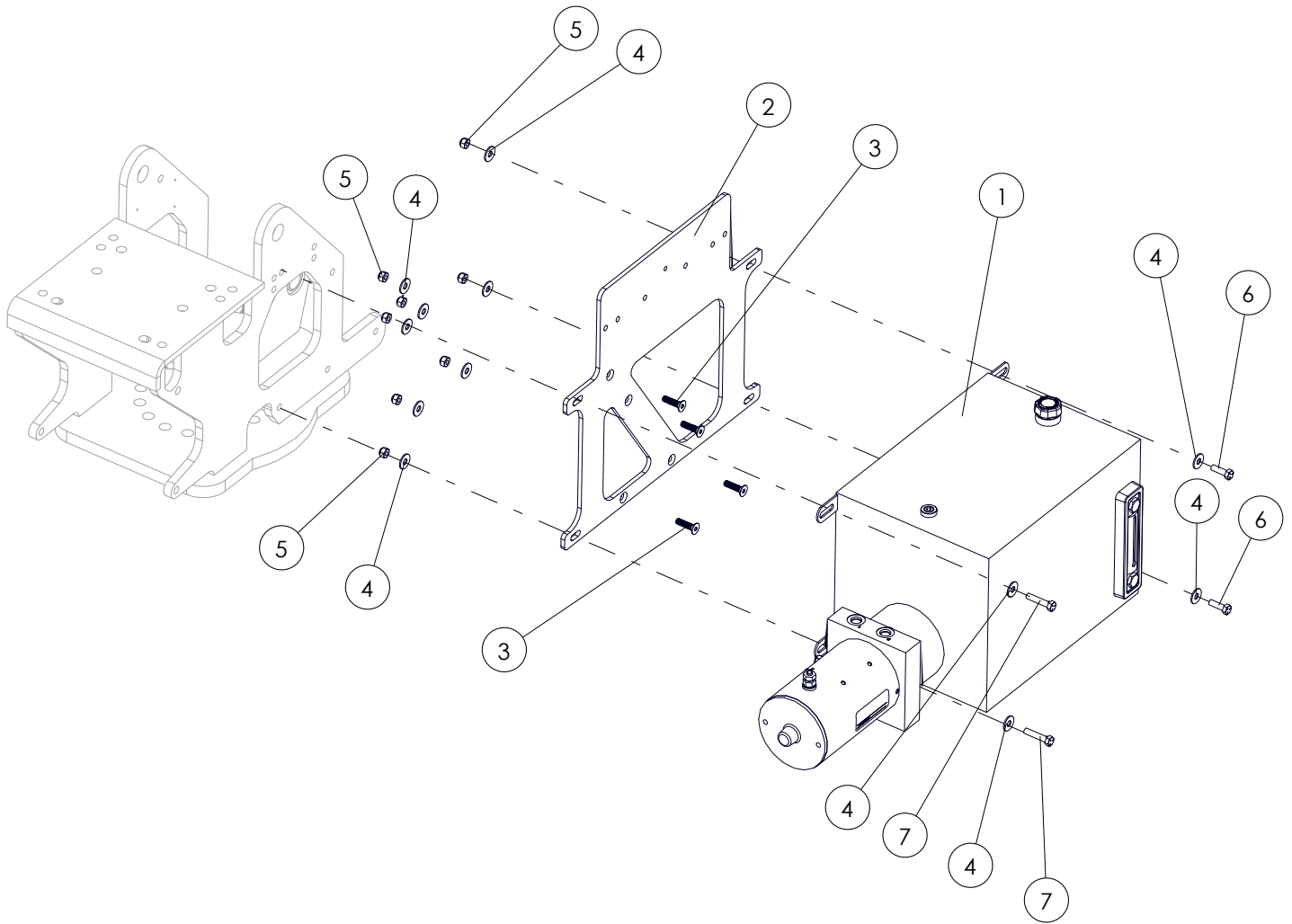
Turret Assembly 1044765

ITEM NO.	PART NUMBER	DESCRIPTION	QTY
1	1036030	WELDMENT, TURRET 3215/4016	1
2	C1049606/1038931	3K/4K LIFT CYLINDER	1
3	1036077	WELDMENT, PIN LIFT CYLINDER BASE MOUNT	1
4	1040913	SLEWING DRIVE, 9"	1
5	1041020	ASSY, BRACKET VALVE MOUNTING UPPER	1
6	1041019	ASSY, BRACKET VALVE MOUNTING LOWER	1
7	1036048	VALVE, 3 SPOOL DIRECTIONAL MANIFOLD	1
8	1036052*	COVER, VALVE TURRET	1
9	1000261	HHCS, 3/8-16 UNC X 1" LG GR 8 ZP	1
10	1001183	LOCKWASHER, SPLIT 3/8" ZP	1
11	C1046764	PIN, LINCH 3/16 X 1-5/16 ZP	1
12	1036132	ZERK, GREASE FITTING STRAIGHT 3/8-24 UNF ZP	1
13	1041058	ASSY, ROTATION STOP SWITCH CONTROL	1
14	1000557	FLATWASHER, 1/4" ZP	4
15	1000558	LOCKNUT, TOP 1/4-20 UNC ZP	2
16	1000594	HHCS, 1/4-20 UNC X 1-1/4" LG GR 5 ZP	2
17	1000191	FLATWASHER, HARDENED 5/8" A325 (THICK)	28
18	1034197	HHCS, 5/8-11 UNC X 3" LG GR 8	12
19	C1046190	HHCS, 5/8-11 UNC X 3-1/2" LG GR 8	16
20	1041621	WINCH, 4016EH	1
21	C1045831	PLATE, SPACER MOUNTING CRANE	1
22	C1045830	PLATE, MOUNTING CRANE	1
23	1041085**	PUMP UNIT, VERT MT, 12 VDC	1
24	C1047073	STUD, PART THREADED 1/4-20 UNC X 1-1/2" LG S.S.	1
25	C1080176	PRESSURE SWITCH	1
26	C1046314	BRACKET, TETHER MOUNTING	1
27	C1047802	BLOCK, SPACER OFFSET MOUNTING TETHER BRACKET	2
28	1000606	LOCKWASHER, SPLIT 1/4" ZP	2
29	C1048015	SHCS, 1/4-20 UNC X 1" LG ZP	2

* VALVE COVER ON PAGE 36

** PUMP UNIT MOUNTING ON PAGE 34

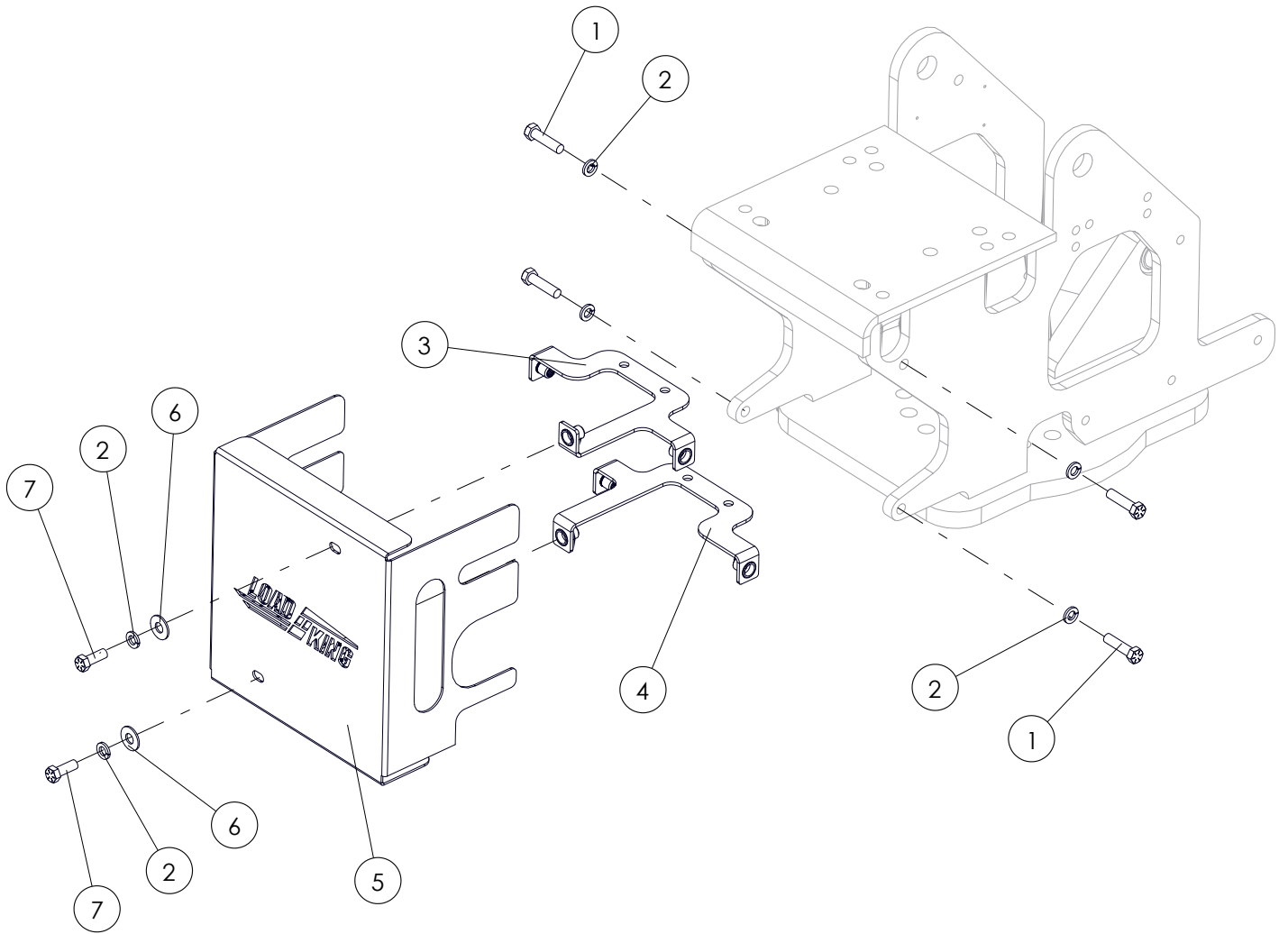
Pump Unit Mounting



Pump Unit Mounting

ITEM NO.	PART NUMBER	DESCRIPTION	QTY
1	1041085	PUMP UNIT, VERT MT, 12 VDC	1
2	1041084	BRACKET, MOUNTING POWER UNIT	1
3	1044334	FHSH, 5/16-18 UNC X 1-1/4" LG ZP	4
4	1000332	FLATWASHER, 5/16" ZP	12
5	1000211	LOCKNUT, TOP 5/16-18 UNC ZP	8
6	1000212	HHCS, 5/16-18 UNC X 1" LG GR 5 ZP	2
7	1044333	HHCS, 5/16-18 UNC X 1-1/2" LG GR 8 ZP	2

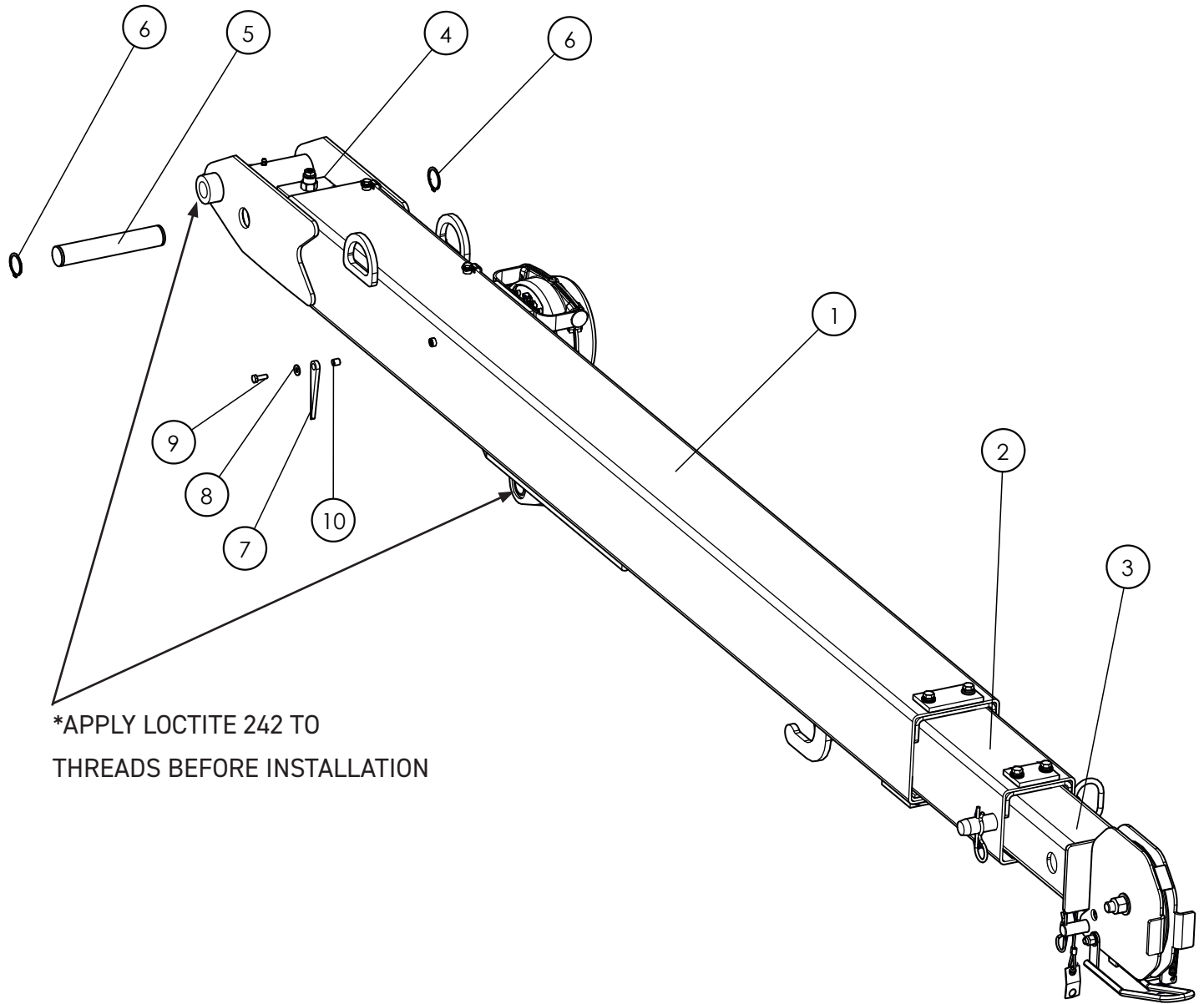
Valve Cover



Valve Cover

ITEM NO.	PART NUMBER	DESCRIPTION	QTY
1	1031485	HHCS, 3/8-16 UNC X 1.50" LG GR 8 ZP	4
2	1001183	LOCKWASHER, SPLIT 3/8" ZP	6
3	1041020	ASSY, BRACKET VALVE MOUNTING UPPER	1
4	1041019	ASSY, BRACKET VALVE MOUNTING LOWER	1
5	1036052	COVER, VALVE TURRET	1
6	1000188	FLATWASHER, 3/8" ZP	2
7	1000261	HHCS, 3/8-16 UNC X 1" LG GR 8 ZP	2

Boom Assembly LK4016



*APPLY LOCTITE 242 TO
THREADS BEFORE INSTALLATION

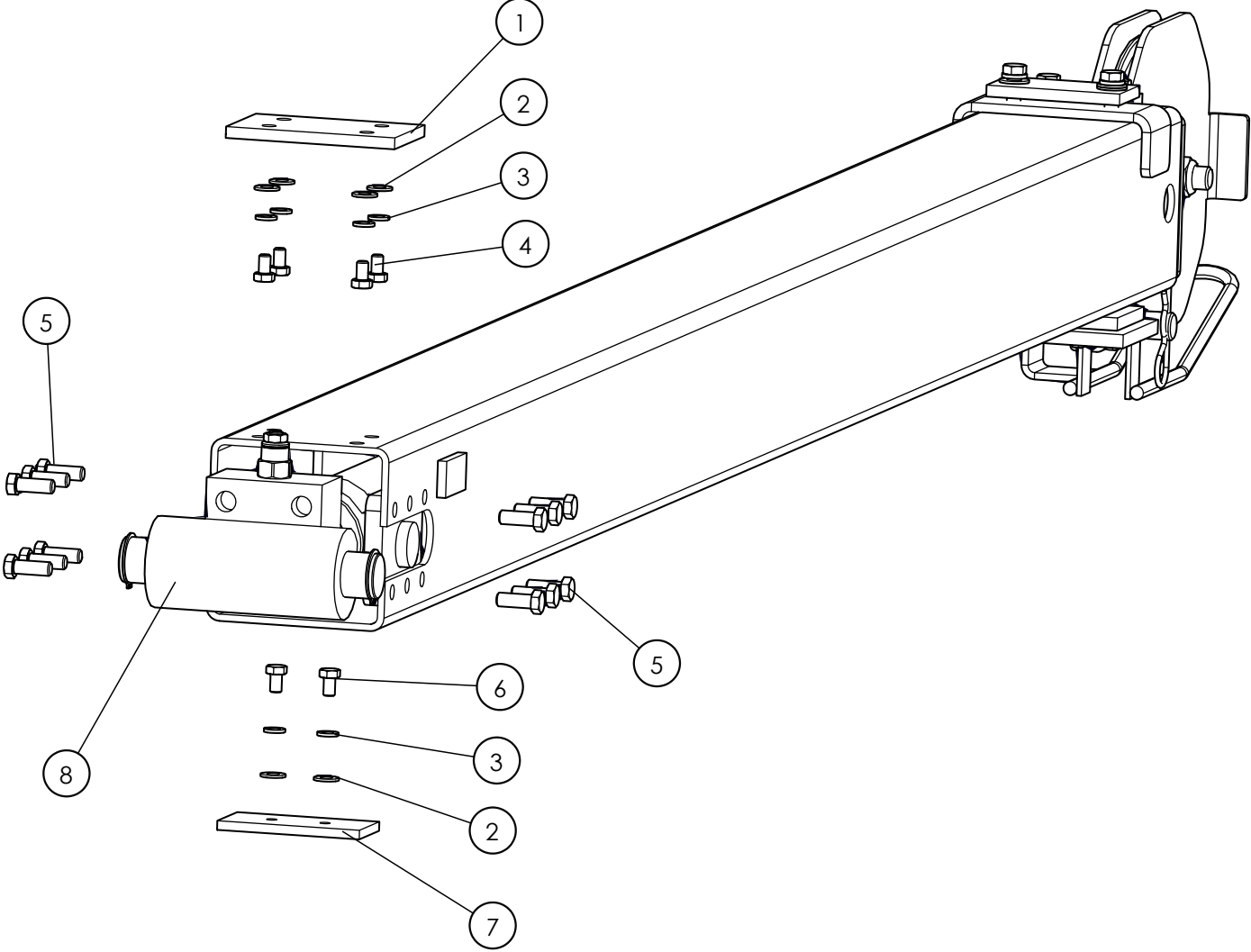
Boom Assembly LK4016

ITEM NO.	PART NUMBER	DESCRIPTION	QTY
1	1040615	WELDMENT, BASE BOOM LK4016	1
2	1040612	WELDMENT, 2ND STAGE BOOM LK4016	1
3	1040614	WELDMENT, 3RD STAGE BOOM LK4016	1
4	C1049610/1038762*	4016 EXTENSION CYLINDER	1
5	1040760	PIN, EXTENSION CYLINDER BASE BOOM MOUNT	1
6	1040693	RETAINER, EXTENSION CYLINDER	2
7	C1046235	3K/4K BOOM ANGLE POINTER	1
8	WSH1-X2500008Z0	WASHER, 1/4, GR8, ZN	3
9	HHCS-C2505008Z0	HEX HEAD CAP SCREW, 1/4-20 X 1/2 LEN, GR8, ZN	3
10	C1057265	OILITE BEARING 5/16 ID X 3/8 OD X 3/8 LG	1

* EXTENSION CYLINDER ON PAGE 46

Boom Assembly LK4016

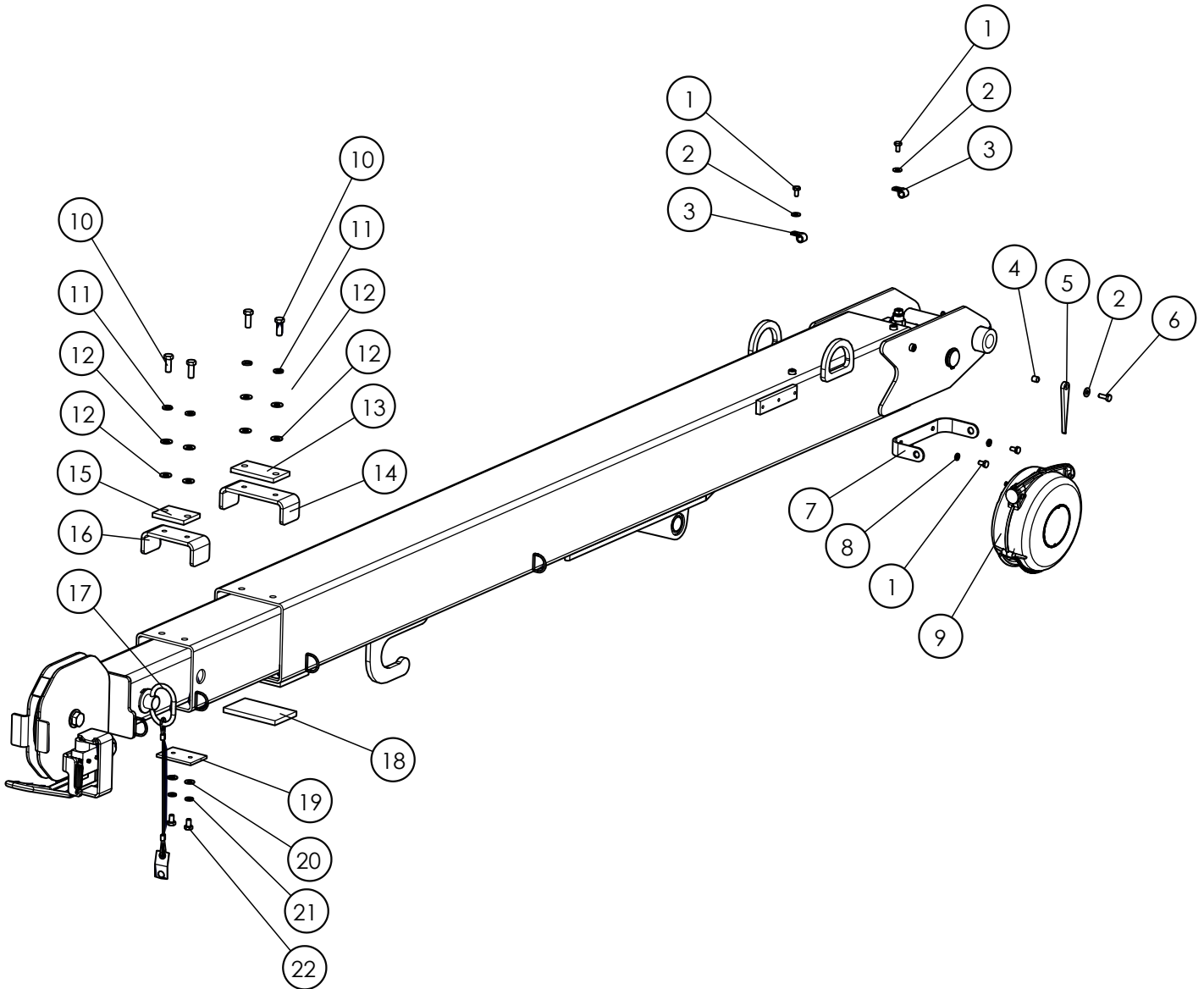
1ST STAGE BOOM
HIDDEN FOR CLARITY



Boom Assembly LK4016

ITEM NO.	PART NUMBER	DESCRIPTION	QTY
1	1040707	ASSY, WEAR PAD W/NUTSERTS FRONT BOTTOM 2ND STAGE	1
2	WSH1-X3130008Z0	WASHER, 5/16, GR8, ZN	8
3	WSH4-X3130008Z0	SPIRAL LOCK WASHER, 5/16, GR8, ZN	8
4	HHCS-C3135008Z0	HEX HEAD CAP SCREW, 5/16-18 X 1/2 LEN, GR8, ZN	4
5	HHCS-C375A008Z0	HEX HEAD CAP SCREW, 3/8-16 X 1 LEN, GR8, ZN	12
6	HHCS-F3135008Z0	HEX HEAD CAP SCREW, 5/16-24 X 1/2 LEN, GR8, ZN	4
7	1040825	PAD, BOOM 2ND STAGE REAR BOTTOM	1
8	C1049610 /1038762	4016 EXTENSION CYLINDER	1

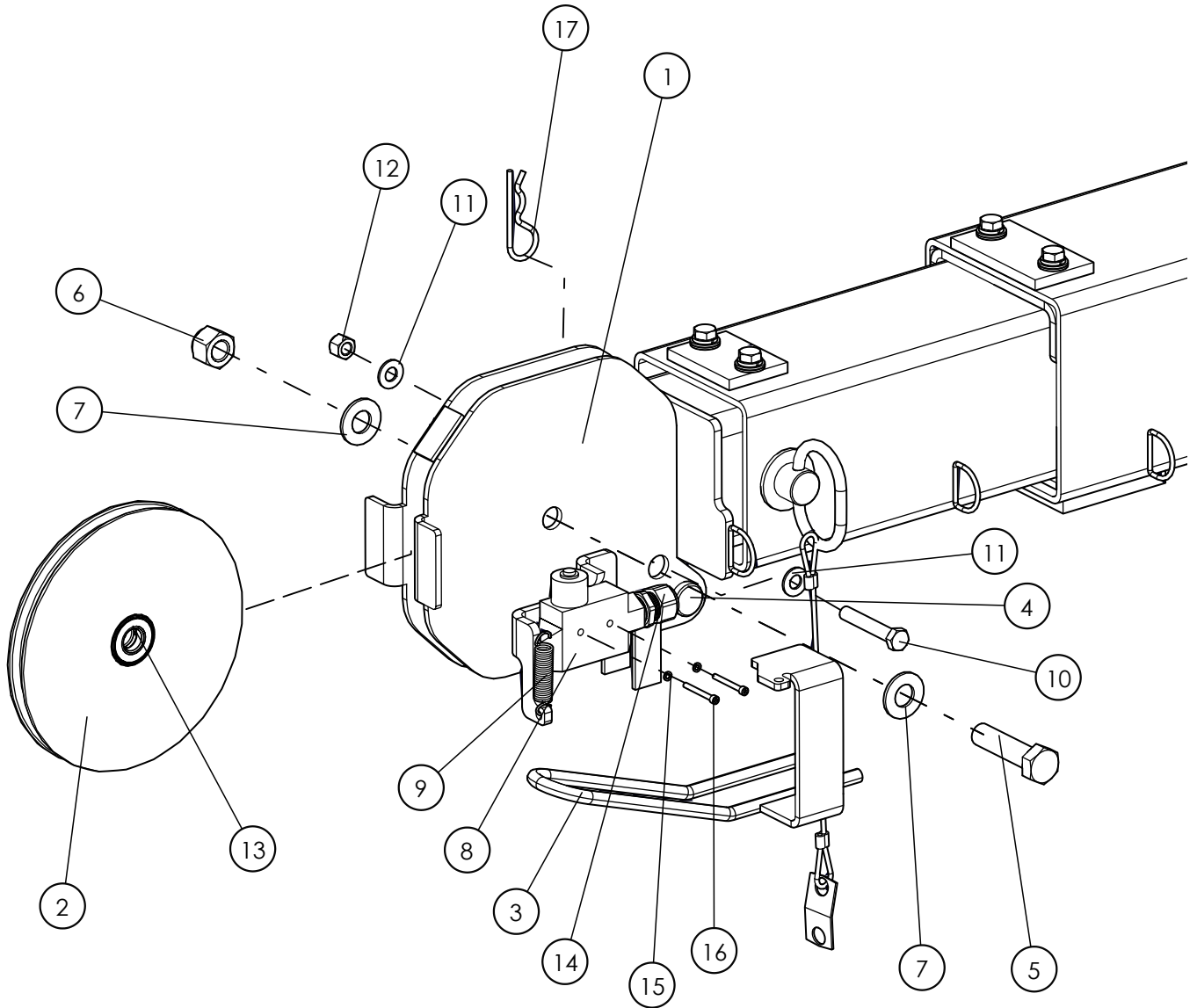
Boom Assembly LK4016



Boom Assembly LK4016

ITEM NO.	PART NUMBER	DESCRIPTION	QTY
1	HHCS-C2505008Z0	HEX HEAD CAP SCREW, 1/4-20 X 1/2 LEN, GR8, ZN	4
2	WSH1-X2500008Z0	WASHER, 1/4, GR8, ZN	3
3	C1046281	3/8 X 9/32 HOSE CLAMP	2
4	C1057265	OILITE BEARING 5/16 ID X 3/8 OD X 3/8 LG	1
5	C1046235	3K/4K BOOM ANGLE POINTER	1
6	HHCS-C2507508Z0	HEX HEAD CAP SCREW, 1/4-20 X 3/4 LEN, GR8, ZN	2
7	BDY32094	MOUNTING BRACKET, CABLE REEL, SERVICE CRANE	1
8	WSH4-X2500008Z0	SPIRAL LOCK WASHER, 1/4, GR8, ZN	2
9	BDY20026	CABLE REEL 16-4 CABLE 17' TRAVEL+25" NO-TRAVEL X 15' LEAD	1
10	HHCS-F375A008Z0	HEX HEAD CAP SCREW, 3/8-24 X 1 LEN, GR8, ZN	4
11	WSH4-X3750008Z0	SPIRAL LOCK WASHER, 3/8, GR8, ZN	4
12	WSH1-X3750008Z0	WASHER, 3/8, GR8, ZN	10
13	1036111	WEAR PAD TOP FRONT BASE BOOM	1
14	1036127	BRACKET, BOOM RETAINER 2ND STAGE	1
15	1036112	WEAR PAD TOP FRONT 2ND STAGE	1
16	1036125	BRACKET, BOOM RETAINER 3RD STAGE	1
17	1036117	ASSY, PIN W/LANYARDS BOOM LOCK	1
18	1040773	WEAR PAD, BASE BOOM BOTTOM FRONT	1
19	1040809	PAD, BOOM 2ND STAGE FRONT BOTTOM	1

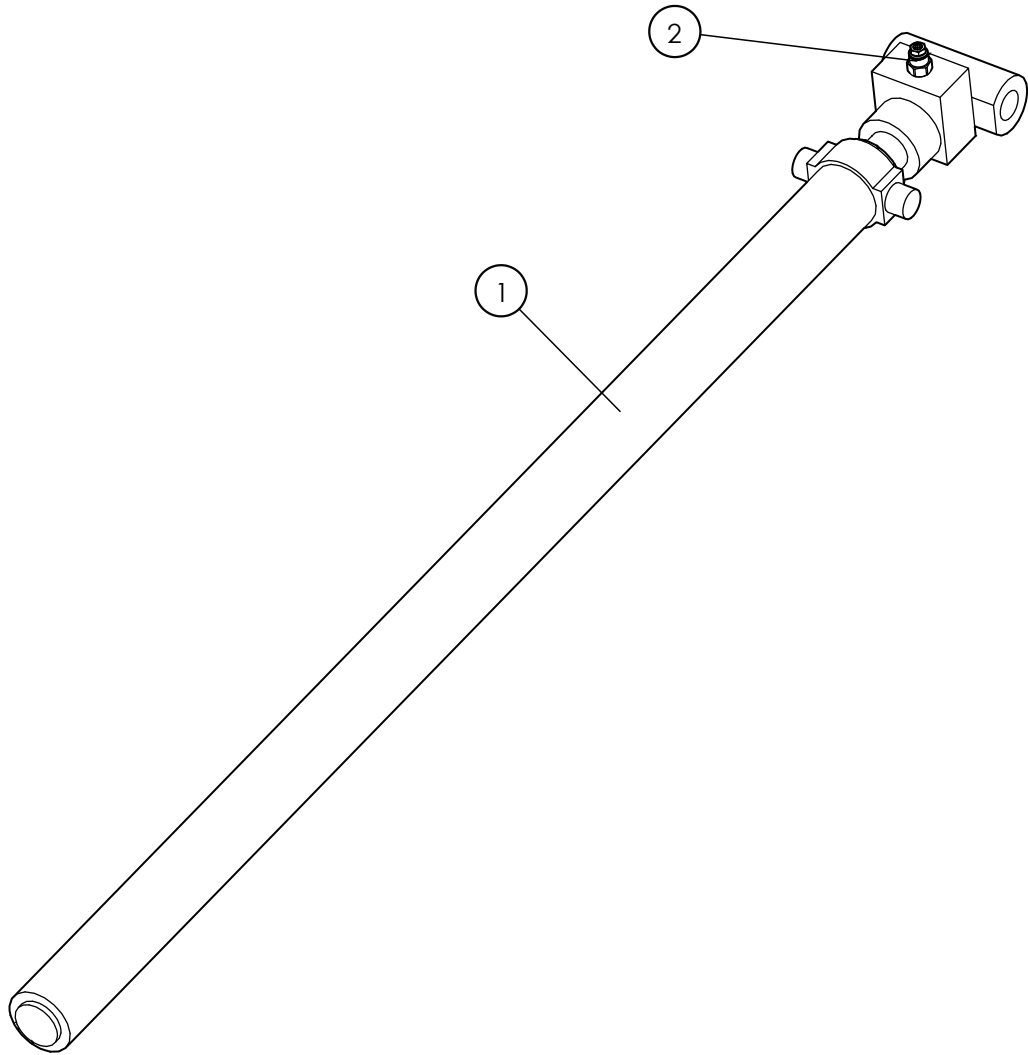
Boom Head Assembly



Boom Head Assembly

ITEM NO.	PART NUMBER	DESCRIPTION	QTY
1	1040614	WELDMENT, 3RD STAGE BOOM LK4016	1
2	C1053867	ASSY, 7-1/2" O.D. SHEAVE FOR 5/16 ROPE	1
3	1036113	WELDMENT, BAIL DETECTION	1
4	C1050143	PIN, CLEVIS 3/4" DIA X 2 3/4" LG	1
5	HHCS-C625B508Z0	HEX HEAD CAP SCREW, 5/8-11 X 2 1/2 LEN, GR8, ZN	1
6	NUT3-C6250008Z0	NYLON LOCK NUT, 5/8-11, GR8, ZN	1
7	WSH1-X6250008Z0	WASHER, 5/8, GR8, ZN	2
8	1036115	MICRO SWITCH ANTI-TWO BLOCK	1
9	1036123	SPRING, EXTENSION 2.375" LG X .50 OD X .062 WIRE	1
10	HHCS-C375B258Z0	HEX HEAD CAP SCREW, 3/8-16 X 2 1/4 LEN, GR8, ZN	1
11	WSH1-X3750008Z0	WASHER, 3/8, GR8, ZN	2
12	NUT3-C3750008Z0	NYLON LOCK NUT, 3/8-16, GR8, ZN	1
13	1040328	PERMANENTLY LUBRICATED BEARING	1
14	C1047133	STRAIN RELIEF, 1/2-14 NPT .2-.35" CORD	1
15	WSH4-X1380008Z0	SPIRAL LOCK WASHER, #6, GR8, ZN	2
16	SHCS-C138A25AZ0	SOCKET HEAD CAP SCREW, 6-32 X 1 1/4 LEN, ZN	2
17	1036151	PIN, COTTER 9/64" WIRE DIA.	1

Extension Cylinder

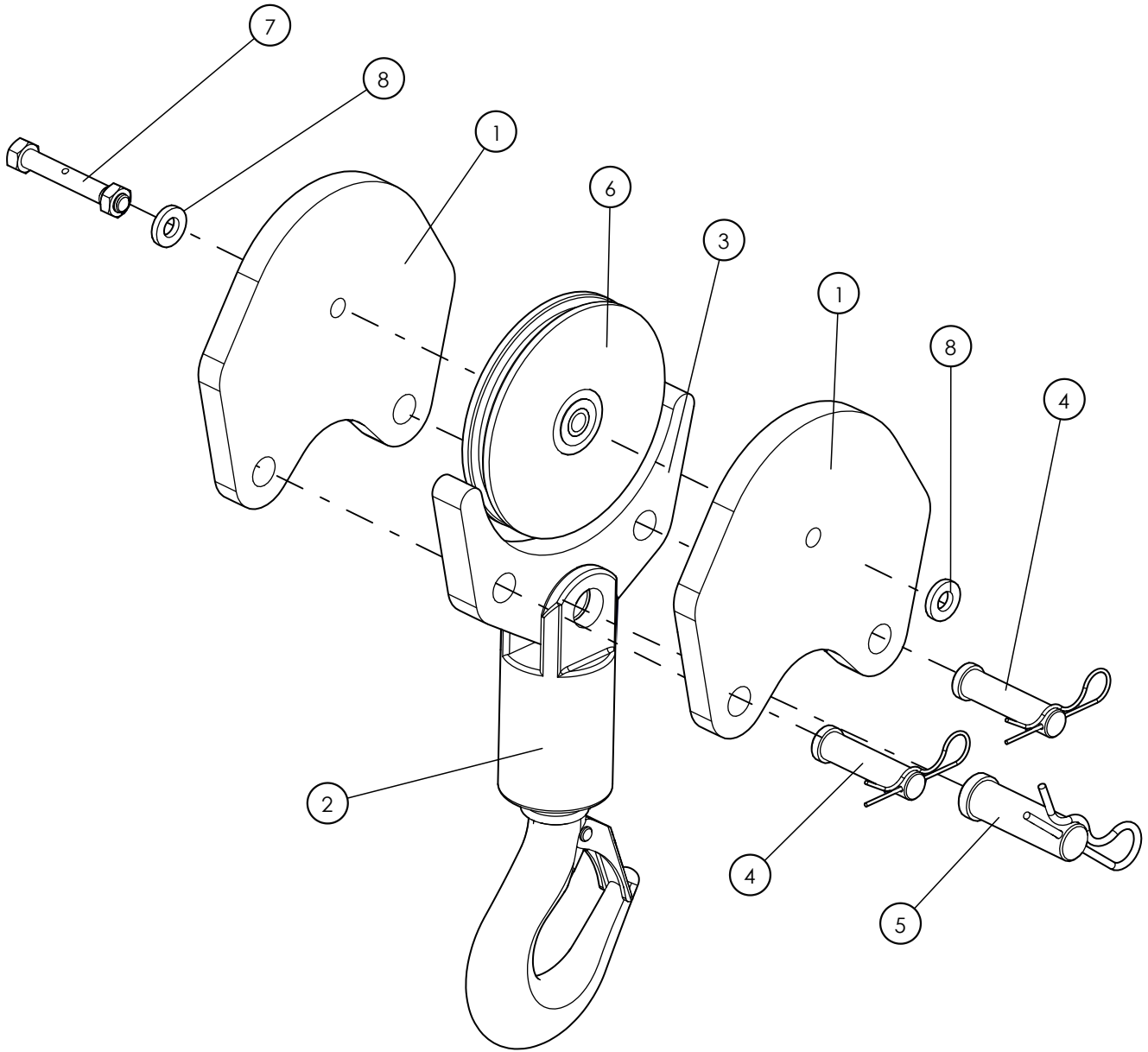


Extension Cylinder

ITEM NO.	PART NUMBER	DESCRIPTION	QTY
1	C1049610 /1038762	4016 EXTENSION CYLINDER	1
2	C1064760	CB VALVE, 4016 EXT CYL	1
3	C1064761*	SEAL KIT, 4016 EXT CYL	1

* NOT SHOWN IN DIAGRAM

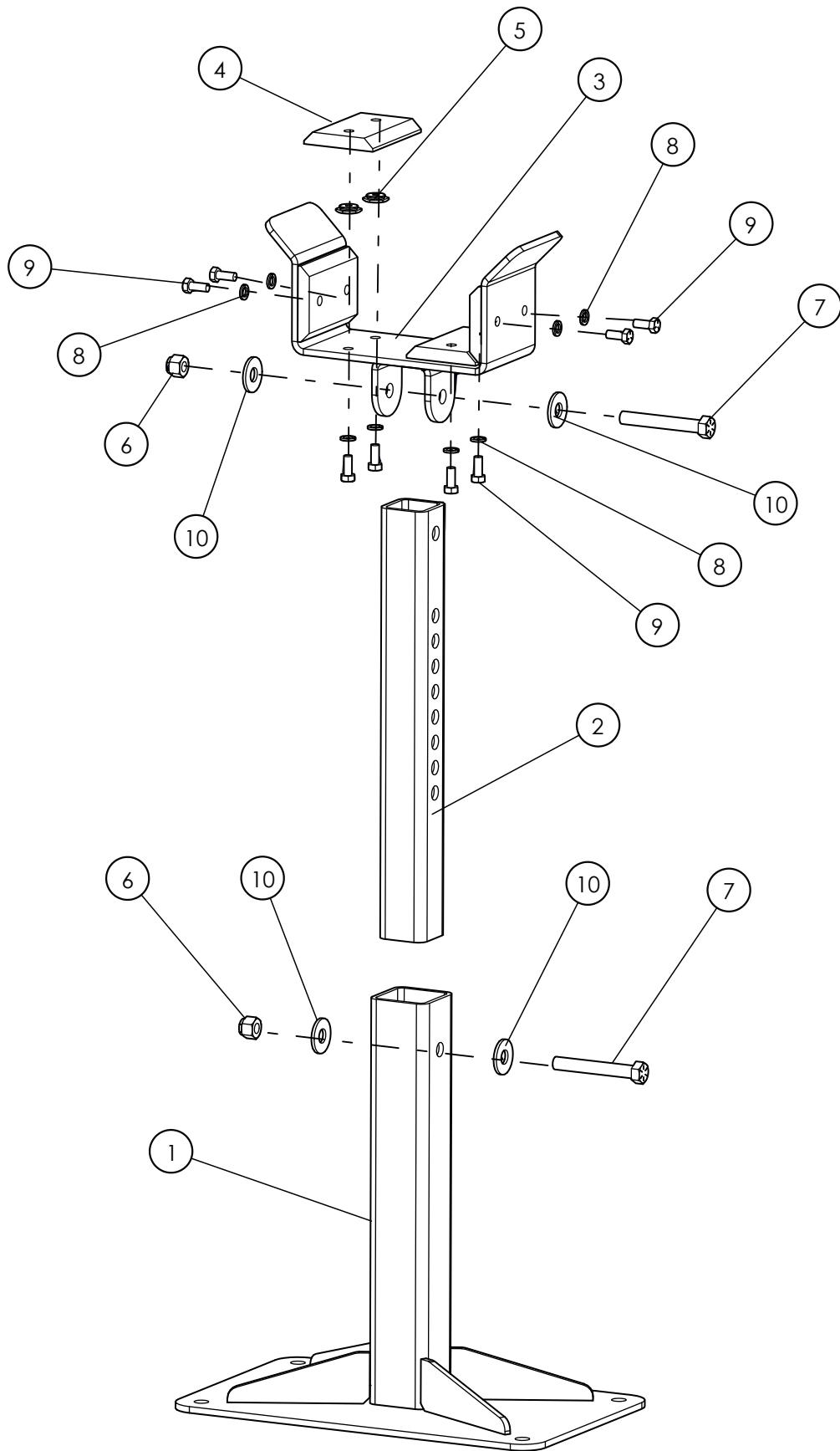
Hook Block C1050243



Hook Block C1050243

ITEM NO.	PART NUMBER	DESCRIPTION	QTY
1	C1052464	PLATE, SIDE TRAVELING BLOCK 4K	2
2	C1050257	HOOK, SWIVEL	1
3	C1052463	SPACER, TRAVELING BLOCK 4K	1
4	C1052926	PIN, CLEVIS 3/4" X 2-3/4 LG W/COTTER PIN ZP	2
5	C1052994	PIN, CLEVIS 1" X 2-15/16 LG W/COTTER PIN ZP	1
6	C1053542	ASSY, SHEAVE W/BEARING 6-1/4" O.D. 5/16" CABLE	1
7	C1056038	SHEAVE AXLE, 1/2-13 UNC X -3/8" LG ZP	1
8	1001789	FLATWASHER, HARDENED 1/2" A325	2

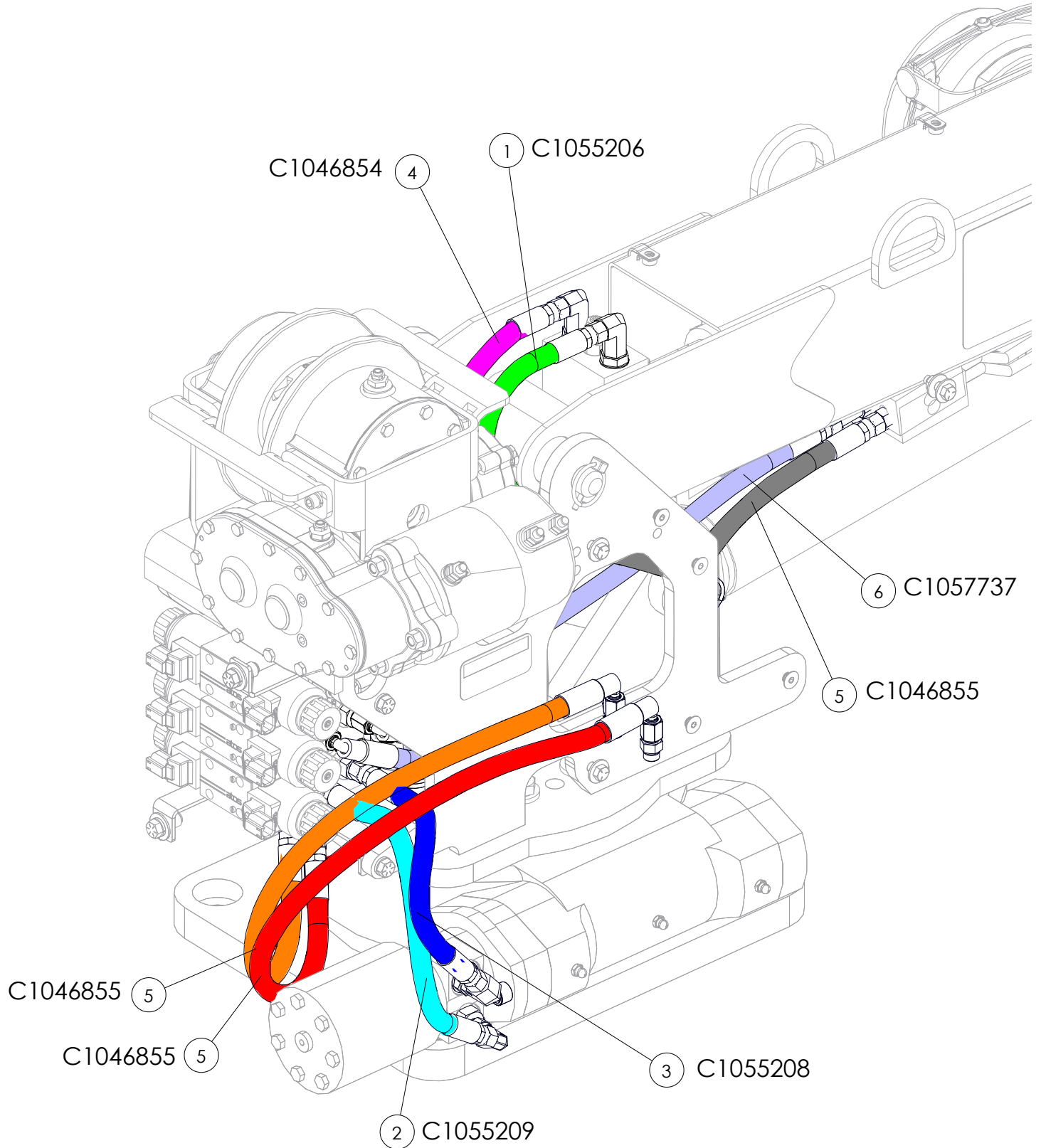
Boom Rest



Boom Rest

ITEM NO.	PART NUMBER	DESCRIPTION	QTY
1	C1046644	WELDMENT, BASE MOUNT BOOM REST	1
2	C1046640	TUBE, LEG INNER ADJUSTABLE BOOM REST	1
3	C1046636	WELDMENT, CRADLE BOOM REST	1
4	C1046643	WEAR PAD, 4.00 X 3.00 X .50	4
5	C1046671	NUTSERT, HEX 5/16-18 UNC ZP	8
6	1000184	LOCKNUT, TOP 1/2-13 UNC ZP	2
7	1000311	HHCS, 1/2-13 UNC X 3-1/2" LG GR 8 ZP	2
8	1000356	LOCKWASHER, SPLIT 5/16" ZP	8
9	1000672	HHCS, 5/16-18 UNC X 3/4" GR 5 ZP	8
10	1000183	FLATWASHER, 1/2" ZP	4

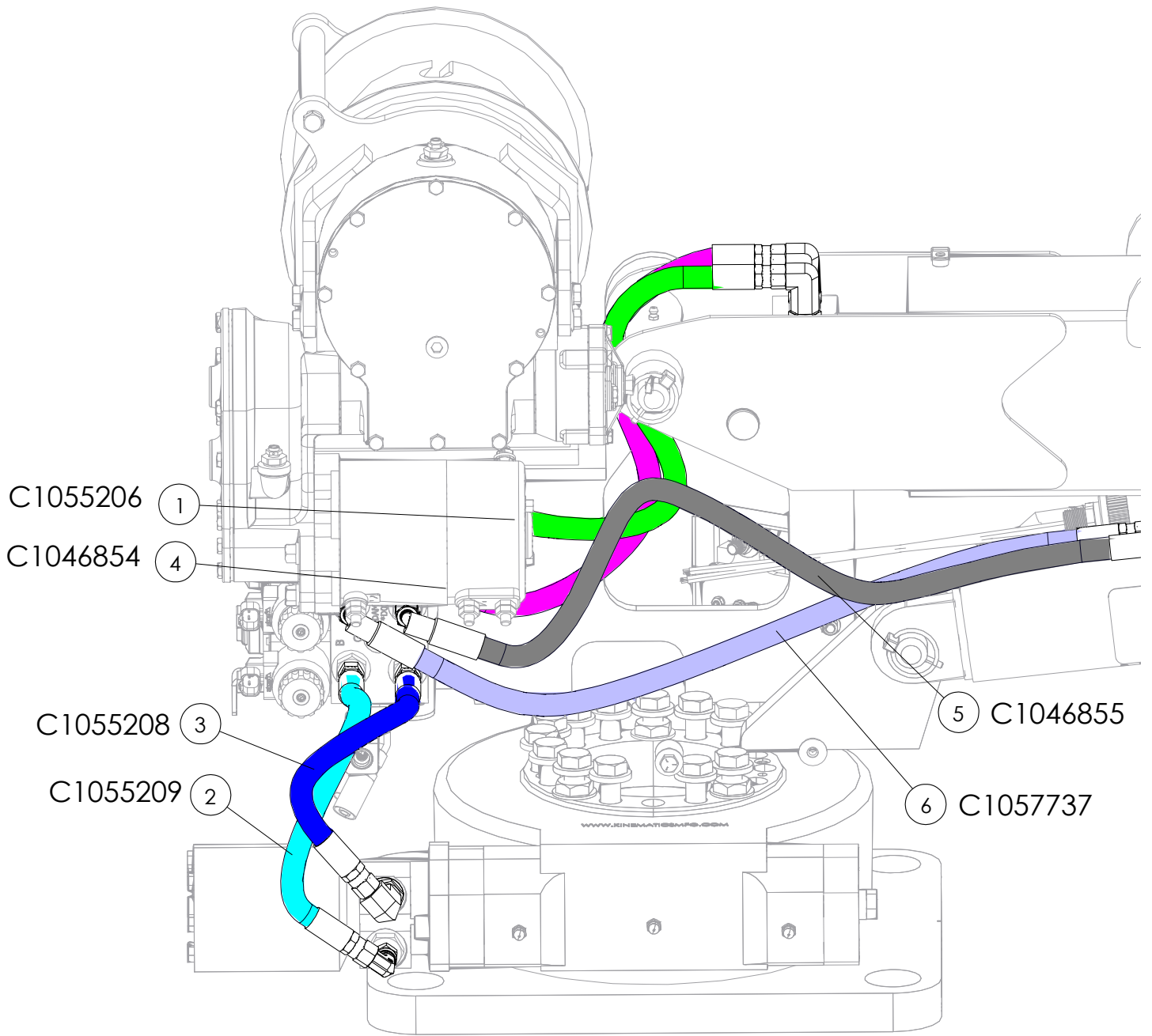
Hydraulic Hose Kit C1046367



Hydraulic Hose Kit C1046367

ITEM NO.	PART NUMBER	DESCRIPTION	QTY
1	C1055206	HOSE, -6, 3000, FJIC-6SW / 90FJIC-6SW ,21	1
2	C1055209	HOSE, -6, 3000, FJIC-6SW / FJIC-6SW, 13	1
3	C1055208	HOSE, -6, 3000, FJIC-6SW / FJIC-6SW, 11	1
4	C1046854	HOSE, -6, 3000, 90FJIC-6SW / FJIC-6SW, 23	1
5	C1046855	HOSE, -6, 3000, 90FJIC-6SW / FJIC-6SW, 29	3
6	C1057737	HOSE, -6, 3000, FOFS-6SW / 90FOFS-6SW, 28	1

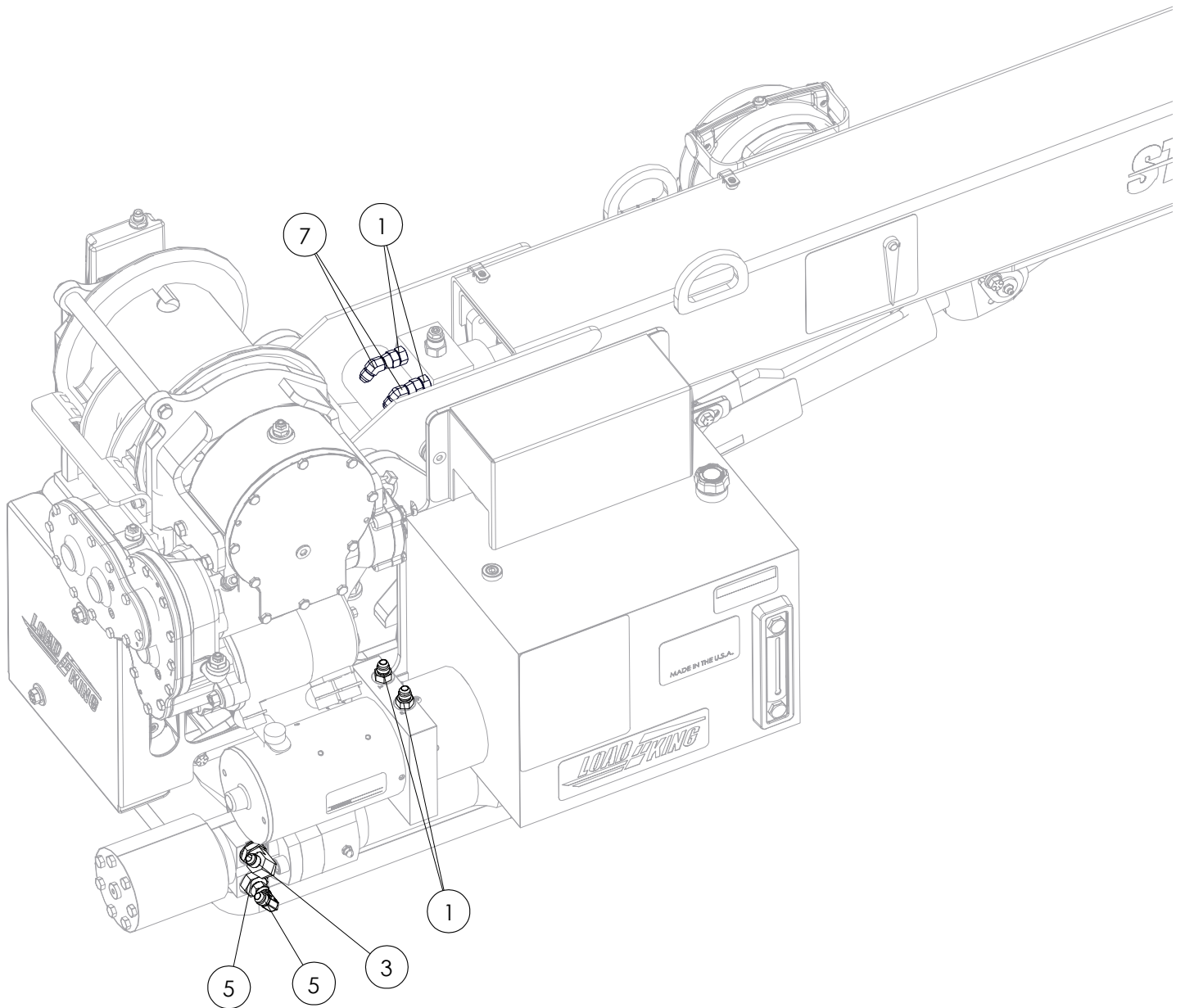
Hydraulic Hose Kit C1046367



Hydraulic Hose Kit C1046367

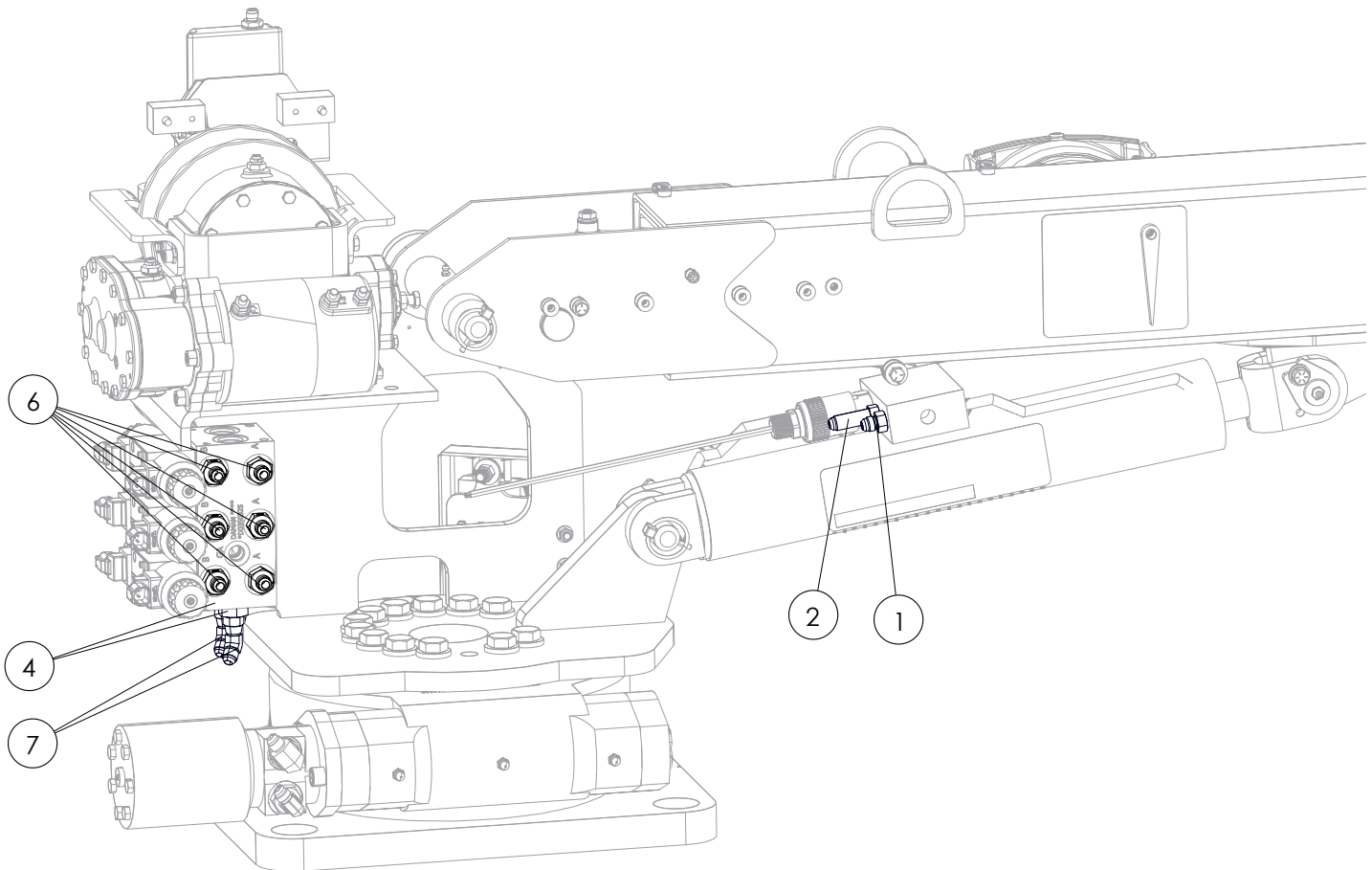
ITEM NO.	PART NUMBER	DESCRIPTION	ORGIN/DESTINATION
1	C1046855	HOSE, -6, 3000, FJIC-6SW / 90FJIC-6SW, 29	E PUMP PORT 'P' TO 3 SPOOL VALVE PORT 'P'
2	C1046855	HOSE, -6, 3000, FJIC-6SW / 90FJIC-6SW, 29	E PUMP PORT 'T' TO 3 SPOOL VALVE PORT 'T'
3	C1055206	HOSE, -6, 3000, FJIC-6SW / 90FJIC-6SW, 21	BOOM EXTEND CYLINDER 'EXT' TO 3 SPOOL VALVE UPPER PORT 'A'
4	C1055209	HOSE, -6, 3000, FJIC-6SW / FJIC-6SW, 13	SLEW DRIVE LOWER PORT TO 3 SPOOL VALVE LOWER PORT 'B'
5	C1055208	HOSE, -6, 3000, FJIC-6SW / FJIC-6SW, 11	SLEW DRIVE UPPER PORT TO 3 SPOOL VALVE LOWER PORT 'A'
6	C1046855	HOSE, -6, 3000, FJIC-6SW / 90FJIC-6SW, 29	LIFT CYLINDER PORT 'E' TO 3 SPOOL VALVE MIDDLE PORT 'A'
7	C1057737	HOSE, -6, 3000, FJIC-6SW / 90FJIC-6SW, 28	LIFT CYLINDER PORT 'R' TO 3 SPOOL VALVE MIDDLE PORT 'B'
8	C1046854	HOSE, -6, 3000, 90FJIC-6SW / FJIC-6SW, 23	3 SPOOL VALVE UPPER PORT 'B' TO BOOM EXTEND CYLINDER PORT 'RET'

Hydraulic Fittings Kit C1046366

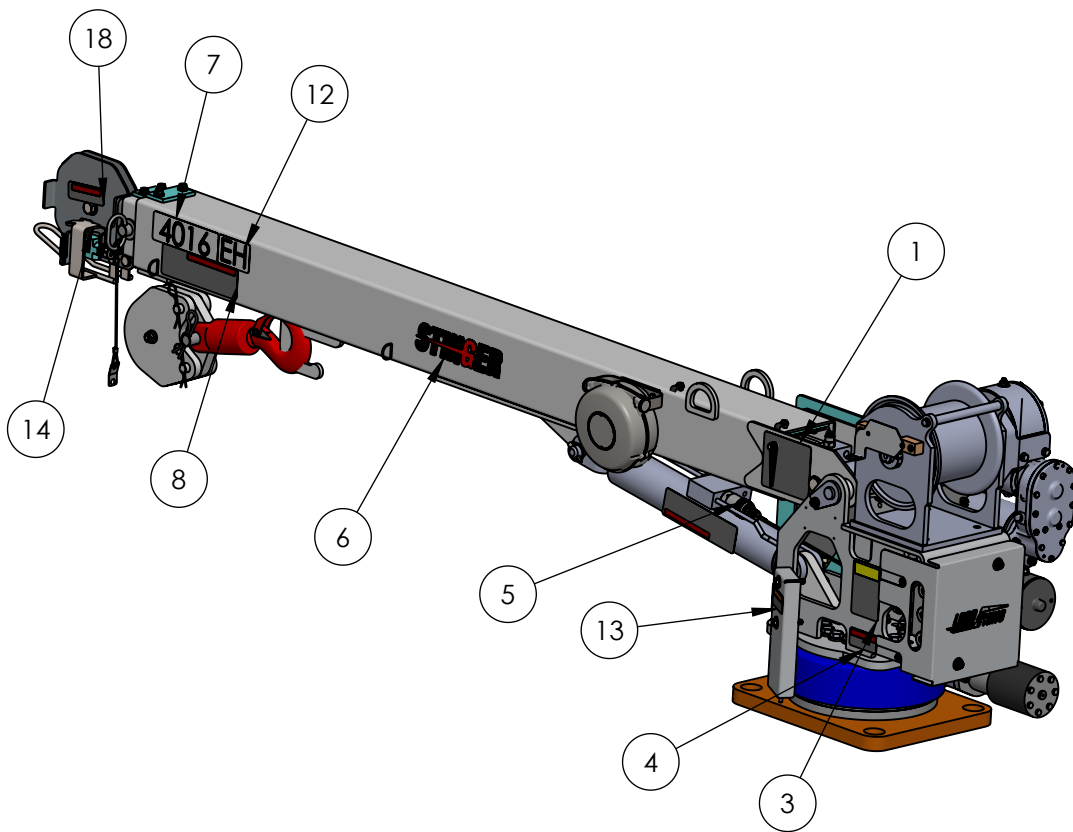
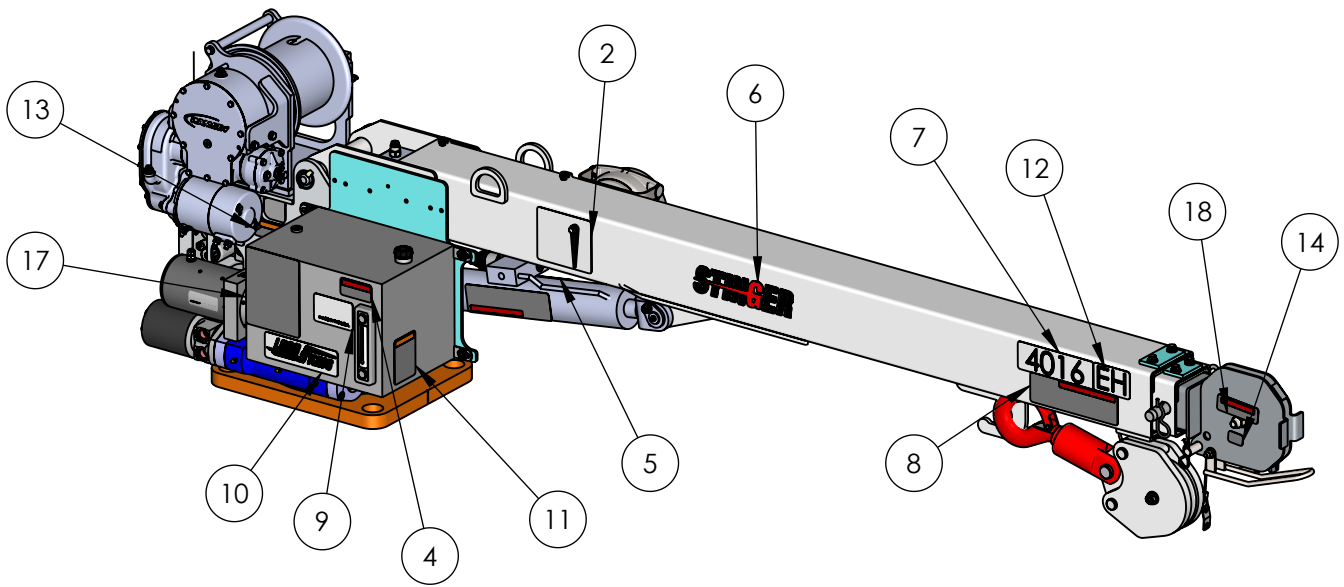


Hydraulic Fittings Kit C1046366

ITEM NO.	PART NUMBER	DESCRIPTION	QTY
1	1009595	ADAPTER, MORB-6/MJIC-6	5
2	1009597	-6MJIC / -6MORB (LONG)	1
3	1013415	ELBOW 90 -6 MJIC / -10 MORB	1
4	1009598	ADAPTER, -10 MORB / -6 MJIC	3
5	1013225	ELBOW, 90, FJIC-6/MJIC-6	1
6	1009596	ADAPTOR MJIC-6 / MORB-8	6
7	1015713	ELBOW 45.0 -6MJIC /-6FJICSW	4



Decal Kit



Decal Kit

ITEM NO.	PART NUMBER	DESCRIPTION	QTY
1	C1045919	DECAL, BOOM ANGLE L.H. LK3215/4016	1
2	C1045918	DECAL, BOOM ANGLE R.H. LK3215/4016	1
3	BDY32006-13	DECAL, CAUTION RULES	1
4	BDY32006-12	DECAL, DANGER STAY CLEAR OF BOOM	2
5	BDY32006-05	DECAL, DANGER SCISSOR POINT	2
6	C1045917	DECAL, STINGER	2
7	C1045834	DECAL, 4016	2
8	C1046365	DECAL, ELECTROCUTION HAZARD (SMALL)	2
9	BDY32006-09	DECAL, MADE IN THE U.S.A.	1
10	BDY32006-14	DECAL, LOADKING (LOGO)	1
11	BDY32006-08	DECAL, WARNINGTAMPERING WITH OVERLOAD	1
12	C1053754	DECAL, EH	2
13	BDY32006-06	DECAL, LOAD SENSOR WARNING	2
14	C1046020	BLOCK WEIGHT DECAL, 4016	2
15	BDY32006-11	DECAL, ALIGN ARROWS	1
16	BDY32006-10	DECAL, GREASE ARROWS	1
17	C1080179	CAPACITY CHART, 4016 SERVICE CRANE	1
18	BDY32006-07	DECAL, DANGER STAY CLEAR OF LOAD	2

Decal Kit



BDY32006-14
W 7.0 X H 2.30
(2 EACH)



C1045917
W 12.62 X H 3
(2 EACH)

4016

C1045834
W 7.79 X H 2.5
(2 EACH)

EH

C1053754
W 3.90 X H 2.5
(2 EACH)

Decal Kit



BDY32006-05
W 8.70 X H 2.45
(2 EACH)



BDY32006-07
W 4.20 X H 1.45
(2 EACH)



BDY32006-09
W 4 X H 2.5
(2 EACH)



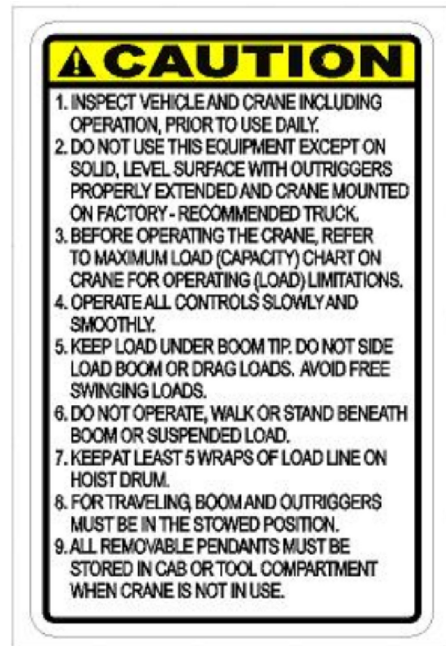
BDY32006-11
W 2.50 X H 1.80
(2 EACH)



C1046020
W 1.70 X H 1.35
(2 EACH)

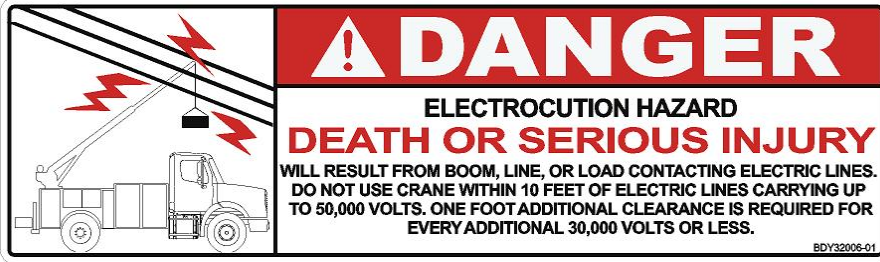


BDY32006-08
W 2.95 X H 4.0
(2 EACH)



BDY32006-13
W 3.20 X H 4.70
(1 EACH)

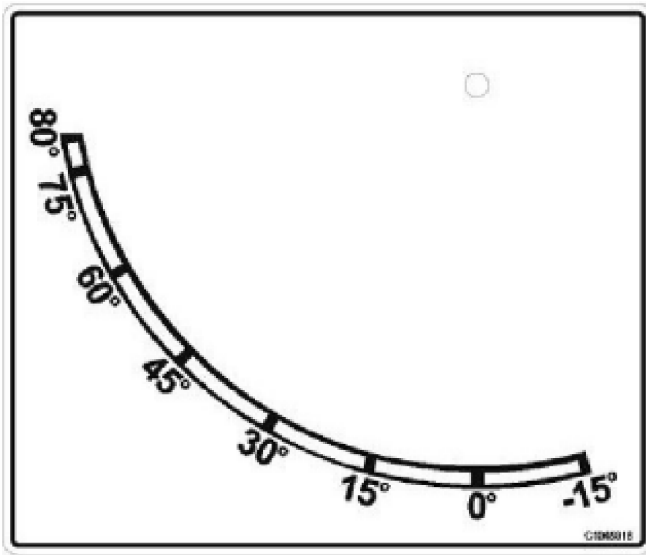
Decal Kit



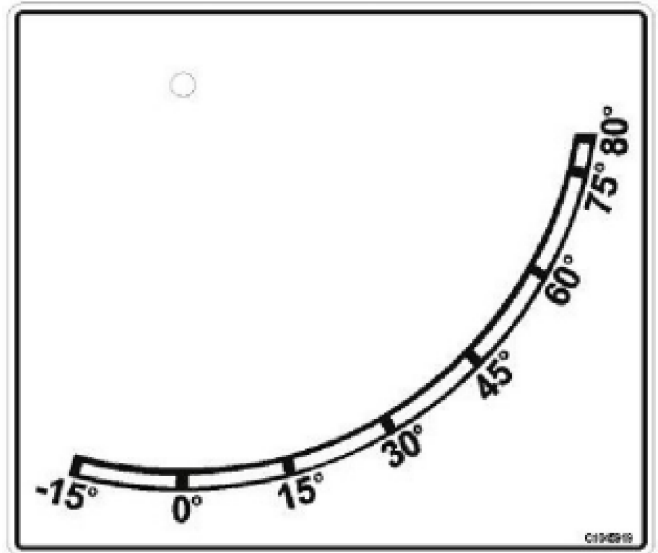
C1046365
W 9 X H 2.67
(2 EACH)



BDY32006-06
W 3.20 X H 1.55
(2 EACH)



C1045918
W 5.58 X H 4.75
(1 EACH)



C1045919
W 5.58 X H 4.75
(1 EACH)



BDY32006-10
W 1.5 X H 1 (PER ARROW)
(1 EACH)



BDY32006-12
W 3.20 X H 1.55
(2 EACH)



WARRANTY

Load King (herein after referred to as the COMPANY) warrants all products manufactured by it and purchased by you to be free from defects in material and manufacture at the time of shipment. This warranty includes:

Two years on **Load King** parts

Two years on repair labor

Three years on structural parts

The COMPANY will furnish replacements for such parts as the COMPANY finds to have been defective at the time of delivery or, at the COMPANY's option, will make or authorize repairs to such parts, provided that, upon request, such parts are returned, transportation is prepaid to the factory from which they were shipped.

This warranty shall not apply to any Product which has been subjected to misuse, misapplication, overloading, neglect (including but not limited to use of unauthorized parts or attachments), adjustments or repair. Engines, motor, tires, wheels, suspensions, axles, etc. and any accessories furnished with or used in the COMPANY's products, but which are not manufactured by the COMPANY, are not warranted by the COMPANY but are sold only with the express warranty, if any, or the manufacturers thereof. This warranted is limited to the first purchaser/user and is not transferable.

THE FOREGOING IS IN LIEU OF ALL OTHER WARRANTIES, WHETHER EXPRESSED OR IMPLIED (INCLUDING, WITHOUT LIMITATIONS, OF MERCHANTABILITY AND FITNESS OF ANY PRODUCT FOR A PARTICULAR PURPOSE), AND OF ANY OTHER OBLIGATION OR LIABILITY ON THE PART OF THE COMPANY. THERE ARE NO WARRANTIES WHICH EXTEND BEYOND THE DESCRIPTION OF THE FACE THEREOF.

LIMITATION OF LIABILITY

It is expressly understood and agreed by you that the COMPANY's liability for its products, whether due to breach of warranty, or otherwise is limited to the furnishing of such replacement parts, F.O.B. factory, and the COMPANY will not be liable for any other injury, loss, damage, or expense, whether direct or consequential, including but not limited to loss of use, income, profit, or production, injury to person or increase in cost of operation, spoilage of or damage to material, arising out of or in connection with the sale, installation, use or inability to use, or the repair or replacement of the COMPANY's products.

All used vehicles and/or bodies are sold in the "AS IS" condition and no expressed or implied warranty is made.

All of COMPANY'S Products are of high quality and are manufactured in conformity with the best commercial practices in the various lines. The COMPANY guarantees all Products manufactured by it to be free from defects in material and manufactured at the time of shipment, for one (1) year from date of delivery. In addition, the COMPANY guarantees the portion of the product to be considered structural for one (1) year from date of manufacture.

While **Load King, LLC.** designs and manufactures its specific equipment configurations to industry standards, it is ultimate responsibility of the buyer/operator to assure that all loads are properly loaded and distributed. All loads must comply with the applicable state and federal load limits.

LOAD KING WARRANTY DATA RECORD

Service Crane Warranty Form Submission		Date	
Date of Delivery			
Model Number			
S/N			
Dealer			
Address			
Customer			
Address			

Record this information at the time that warranty registration form is completed and returned to **Load King**.

LOAD KING



**CUSTOM
TRUCK**
ONE SOURCE™

Load King

7701 Independence Avenue, Kansas City, MO 64125

Toll Free: (888) 264-5522