

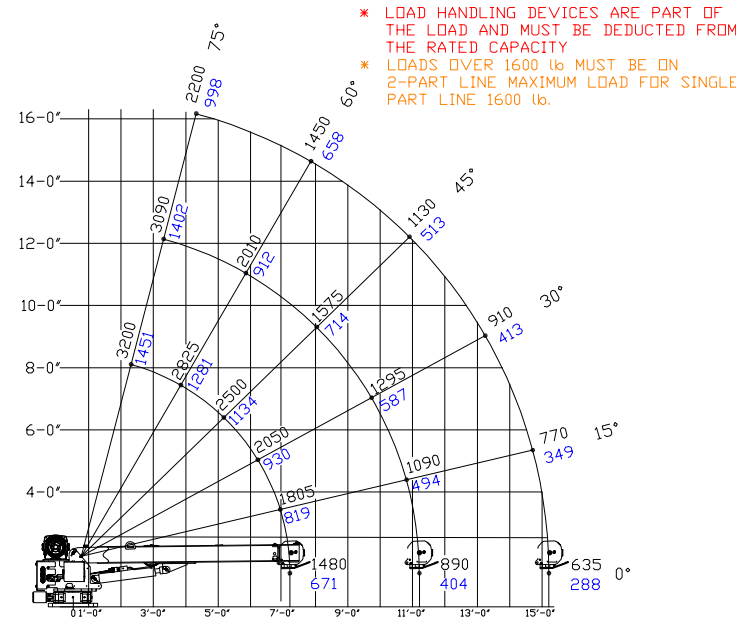
5.50



3215

P/N C1080311

HYDRAULIC CAPACITY CHART



* LOAD HANDLING DEVICES ARE PART OF THE LOAD AND MUST BE DEDUCTED FROM THE RATED CAPACITY
 * LOADS OVER 1600 lb MUST BE ON 2-PART LINE MAXIMUM LOAD FOR SINGLE PART LINE 1600 lb.

XX00 lb
 XX00 kg

7/32" NON-ROTATION RESISTANT WIRE
 ROPE ULTIMATE STRENGTH 5,600 lb MIN.

SERVICE CALL 833-CT1S-911 (833-281-7911) Email: CIC@CUSTOMTRUCK.COM

7.00

A	EC0XXX	INITIAL ISSUE	10/22/24	NQA
REV.	ECO #	DESCRIPTION	DATE	BY

UNLESS OTHERWISE SPECIFIED

DIMENSIONS ARE IN INCHES
 TOLERANCES:
 FRACTIONAL ±1/8
 ANGULAR: MACH ±2° BEND ±2°
 TWO PLACE DECIMAL ±.06
 THREE PLACE DECIMAL ±.016

INTERPRET GEOMETRIC TOLERANCING PER: ASME Y14.5-2009

MATERIAL

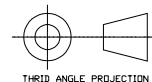
FINISH

DO NOT SCALE DRAWING

NAME DATE
 DRAWN NQA 10/22/24

CHECKED

PROPRIETARY AND CONFIDENTIAL
 THE IDEA, CONCEPT OR DESIGN CONVEYED BY THIS DOCUMENT, SPECIFICATION, ILLUSTRATION, PRINT OR COPY IS PROPERTY OF CUSTOM TRUCK ONE SOURCE. REPRODUCTION, DISTRIBUTION, OR USE OTHER THAN SPECIFICALLY INTENDED MUST BE AUTHORIZED IN WRITING FROM CUSTOM TRUCK ONE SOURCE OR ITS REPRESENTATIVES



THIRD ANGLE PROJECTION



TITLE:
 CAPACITY CHART,
 LK3215

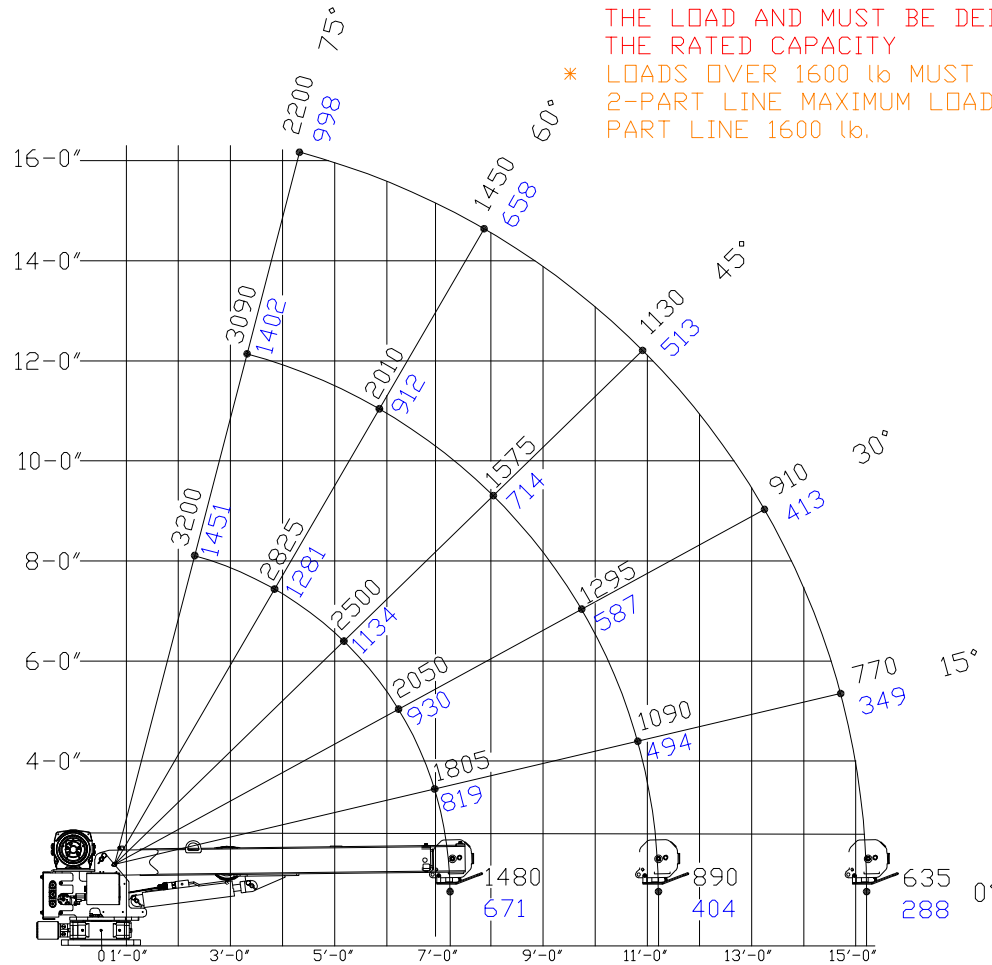
SIZE	DWG. NO.	REV
A	C1080311	A

SCALE: 1:1 WEIGHT: SHEET 1 OF 1

1. THIS DECAL IS TO COMPLY WITH DECAL SPECIFICATION 816. STANDARD DECAL CONSTRUCTION AS PER 3.0.
2. CONTACT LOAD KING FOR ART WORK AT (833) 281 - 7911

HYDRAULIC CAPACITY CHART

- * LOAD HANDLING DEVICES ARE PART OF THE LOAD AND MUST BE DEDUCTED FROM THE RATED CAPACITY
- * LOADS OVER 1600 lb MUST BE ON 2-PART LINE MAXIMUM LOAD FOR SINGLE PART LINE 1600 lb.



XX00 lb
XX00 kg

7/32" NON-ROTATION RESISTANT WIRE
ROPE ULTIMATE STRENGTH 5,600 lb MIN.

SERVICE CALL 833-CT1S-911 (833-281-7911) Email: CIC@CUSTOMTRUCK.COM