

OUTBACK **35-61B / 35-64B**



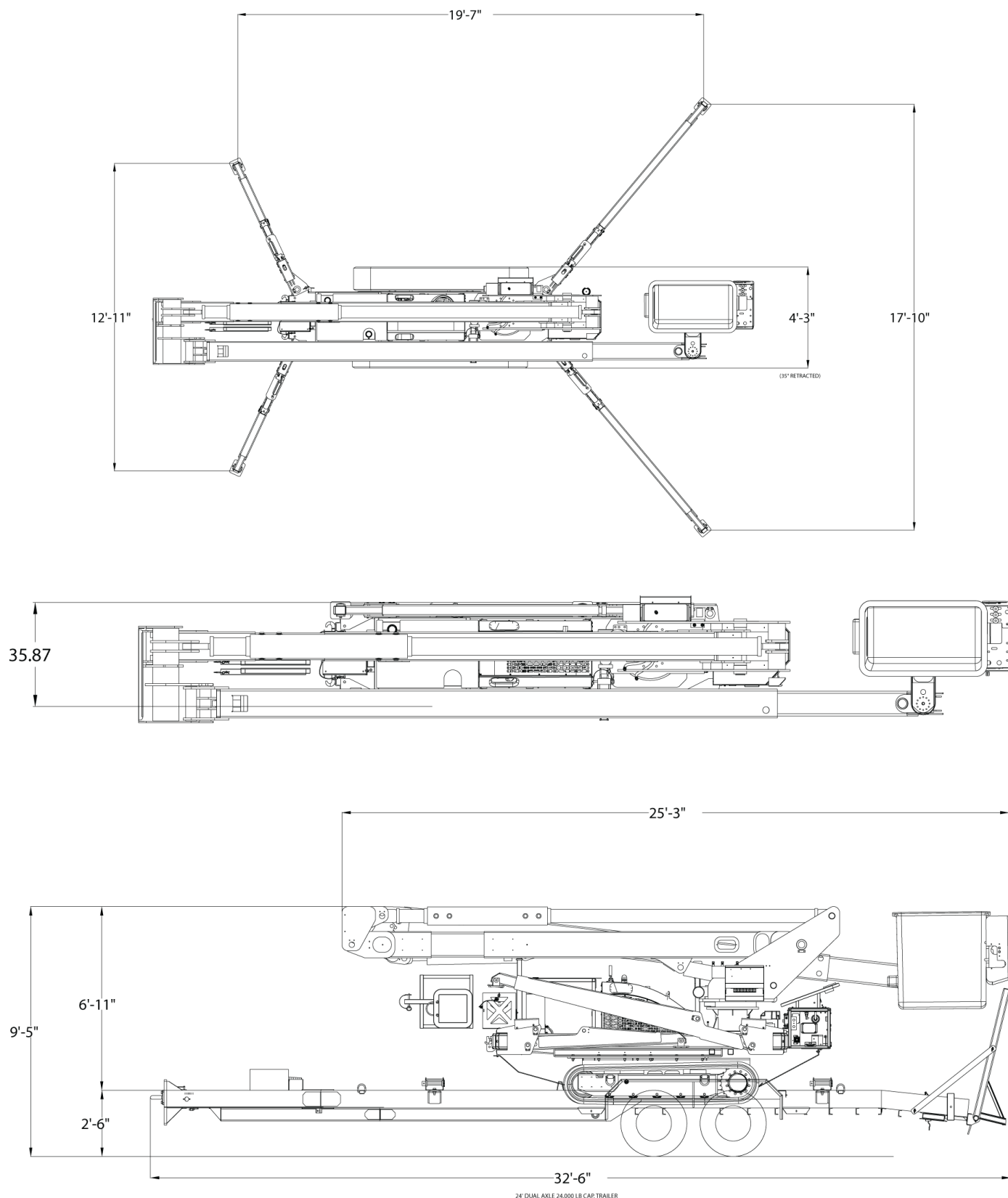
FEATURES

- 46KV CATEGORY C INSULATION
- 35-INCH WIDTH WHEN TRACKS ARE RETRACTED
- WORKING HEIGHT OF 61-FEET (64-FEET WITH ELEVATOR)
- 40-FOOT SIDE REACH
- UNLIMITED BASKET WORK ZONE

DIMENSIONS

OUTBACK 35-61B / 35-64B

FOOTPRINT OF OUTRIGGER POSITIONS



Outrigger ground penetration: Rear - 25", Front - 16"
Recommended trailer: 25 ft / 25,900 lb. GVWR utility trailer

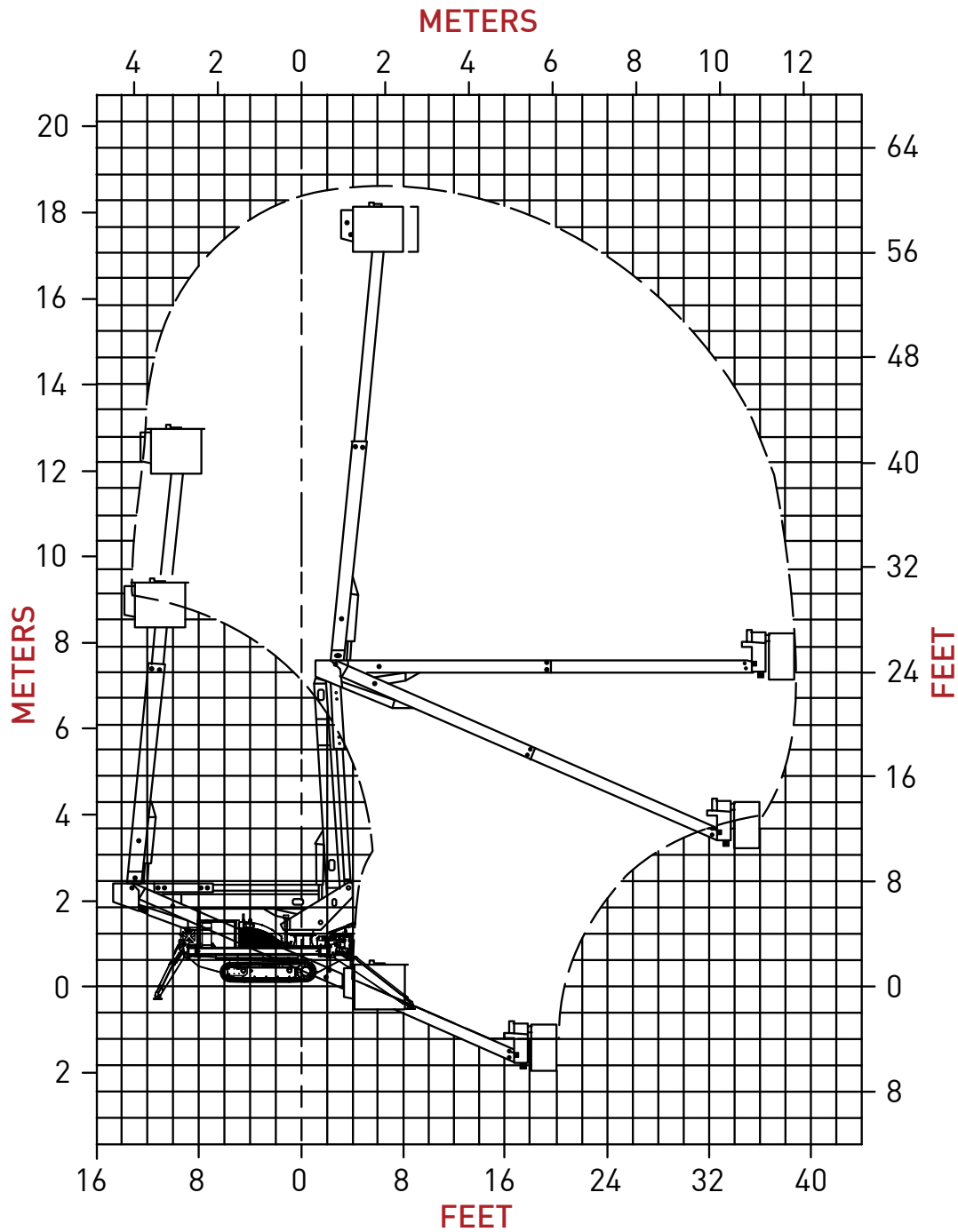
RANGE DIAGRAM

OUTRIGGERS FULLY EXTENDED

OUTBACK 35-61B / 35-64B

RANGE DIAGRAM

ANSI / SAIA A92.20



Stability is verified per ANSI / ASSE A92.2 including 300 LBS in the bucket.

The data published herein is intended as a guide only and shall not be construed to warrant applicability for lifting purposes. Machine operation is subject to the range diagram and operation manual, both supplied with the machine.

BOOM AND BUCKET

Horizontal reach		38 ft 9 in
Maximum platform capacity		300 lbs.
Inner boom extension		141 in
Outer / inner boom articulation (+/-2°)		-25° to +85°
Lower boom articulation (+/-2°)		0° to +86°
Boom insulation		46KV Category C per ANSI 92.2
Insulation gap	Upper boom fully retracted	38 in
	Upper boom fully extended	179 in
	Lower boom	24 in
Max working height	Standard (35-61B)	61 ft
	With elevator (35-64B)	64 ft
Maximum bucket capacity		300 lbs.

360° continuous rotation
Two speed planetary reduction drive

HYDRAULICS & DRIVES

Tracks	90 in. non-marking tracks
Track width closed / open	35" / 50"
Ground pressure	7.7 lb. / in. ²

Engine	Kubota 25HP Tier 4 Diesel
Fuel capacity	10 gallons

Hydraulic system	Capacity	25 gallons
	Operating pressure	3,000 psi
	Pump	16 GPM fixed displacement piston

OPERATOR AIDS & ACCESSORIES

Audible track alarm on retract
Audible tilt alarm, side to side and front to back
Outrigger interlock system

OUTRIGGERS

Hybrid radial	Center of pad
Front:	14 ft
Rear:	18 ft 6 in
Front to back:	20 ft 6 in

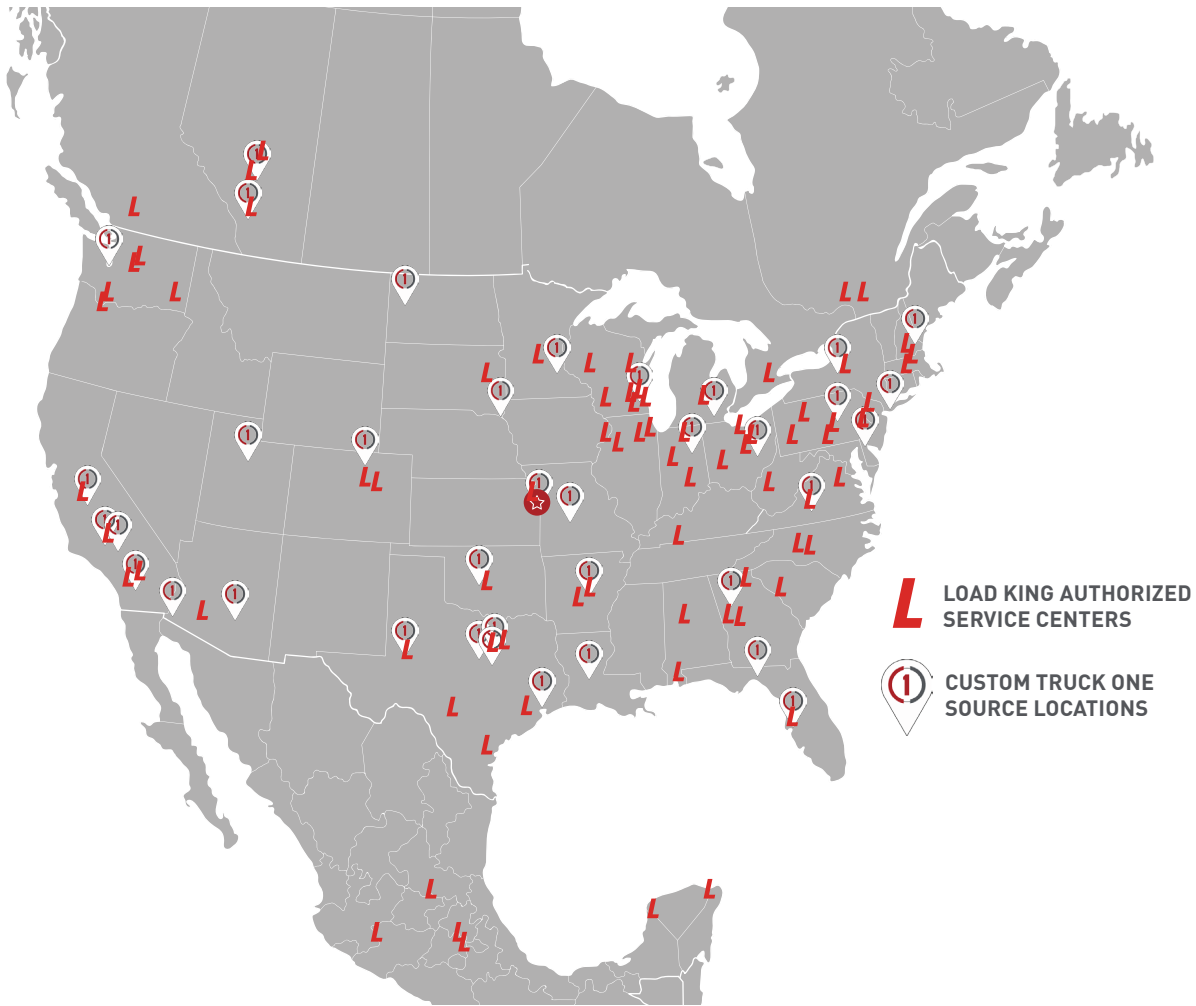
CTOS MACHINES ARE EQUIPPED WITH THESE VALUE PACKAGE OPTIONS:

- Audible alarm for outriggers
- Wireless radio control drive
- High / low two speed throttle
- Set of four outrigger pads
- 12v DC emergency power
- Hydraulic tool circuit at platform
- 2-foot platform elevator (35-64B)

OPTIONAL ACCESSORIES AVAILABLE FOR PURCHASE:

- Extra set of pins for entire machine
- 4 thermoplastic mobile mats 2' x 8' long
- Storage bracket for ground mats on trailer
- Engine block heater
- Pin on pad mount transformer carrier platform (1,000 lb capacity)
- Pintle eye extension on trailer & extended safety chains
- Spare trailer tire
- Bracket for spare tire storage on trailer
- Electric tongue jack
- Solar battery charger on trailer
- Extra set of machine manuals
- Start / stop at basket
- Rotating platform

SERVICE LOCATIONS



CONTACT US

24/7 Call Center, staffed in Kansas City, MO: 833-281-7911

Parts questions: 833-PARTSLK (833-727-8755)
partsupport@loadkingmfg.com

Parts orders: store.loadkingmfg.com

Warranty: cranewarranty@loadkingmfg.com



*Custom Truck One Source's quality management system
in Kansas City is certified to ISO 9001:2015 by Orion.*