



## USER MANUAL

### LOAD KING

### FRONT BUMPER WINCH

REV B

June 30, 2020



## Table of Contents

INTRODUCTION.....	4
DEFINITIONS USED IN THIS MANUAL.....	5
SAFETY WARINGS.....	5
FRONT BUMPER WINCH LABELS.....	6
FRONT BUMPER WINCH ASSEMBLY PARTS .....	8
FRONT BUMPER WINCH ASSEMBLY (BMP00002).....	10
DIGGER FRONT WINCH OVERRIDE - SCHEMATIC.....	12
FRONT BUMPR WINCH OVERRIDE - SCHEMATIC.....	13
OPERATION .....	14
ADDITIONAL RESOURCES .....	15
SERVICE AND MAINTENANCE .....	15
REVISION CONTENT .....	16

## INTRODUCTION

---

### Company

Load King has been producing quality trailers since 1956. We are located in Elk Point, South Dakota.

Although the trailer industry is an ever-changing environment and we've seen many changes over the years, we have remained committed to the simple philosophy that we will make a reasonable profit through the designing, manufacturing, and marketing of top quality products that we can always be proud to call Load King. We have not, and will not, compromise in this area.

Quality shows in all facets of an operation, from the moment you make your first phone call for a product inquiry to the time you sell your used equipment and realize you've received top dollar on your sale. We continue to strive for excellence in every area and never quit trying to improve. We have earned our reputation believing that quality is value and value sells products.

Through our shared Engineering, Marketing and Sales teams, Load King and Custom Truck One Source bring that tradition of quality and value to another market with the Load King FRONT BUMPER WINCH.

### About Custom Truck One Source

Beginning in February of 2015, three family-owned and operated companies (Custom Truck & Equipment, Utility Fleet Sales and Forestry Equipment of VA) joined together to form what is now Custom Truck One Source. Shortly after its inception, UCO Equipment became a part of the CTOS family along with TNT Equipment six months later. In December 2015, CTOS welcomed its sixth company under its brand, Load King, a leading manufacturer of high-quality and customizable trailers.






The announcement of the partnership represented the platform's collective commitment to the continued growth and dominance of each legacy company's individual offerings, now compounded to leverage the expertise of the team and, ultimately, better serve loyal CTOS customers all over the world. CTOS will build upon the market positions of each legacy company, while serving as a single source supplier of specialty equipment and services for the utility and heavy equipment industries. The utility and heavy equipment platform collectively offers sales, rentals, parts and after market services, remanufacturing, customized equipment and transportation.

## DEFINITIONS

---

### Definitions Used in this Manual

The following table describes text and symbols used to highlight important information.

Signal Word	Symbol	Explanation
DANGER		Danger is used to alert readers about an immediate and serious hazard that will likely be fatal.
WARNING		Warning is used to alert readers about the potential for serious injury or death or serious damage to equipment.
CAUTION		Caution is used to alert readers about the potential for anything from moderate injury to serious equipment damage or destruction.
READ		Read is used to alert readers of information to be read on machinery
NOTE		Note is used for a tip or suggestion to help readers carry out a procedure successfully.

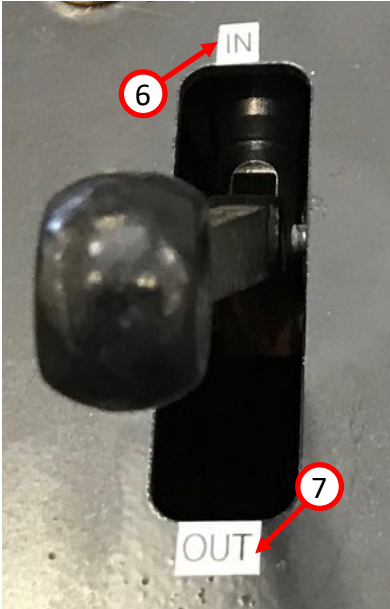
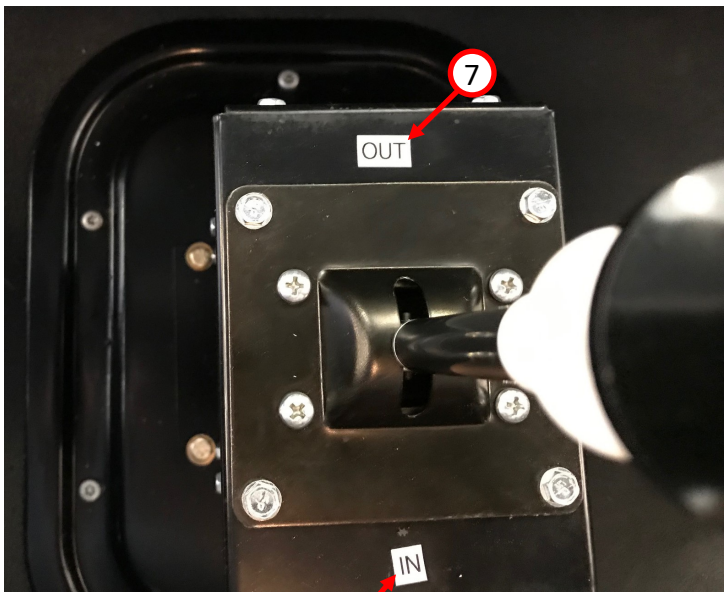
Table—1

### Safety Warnings



**WARNING:** Do not work or stand on top of the bumper without proper fall protection.

FRONT BUMPER WINCH LABELS



FRONT BUMPER WINCH LABELS



1



2



3



4



5



6

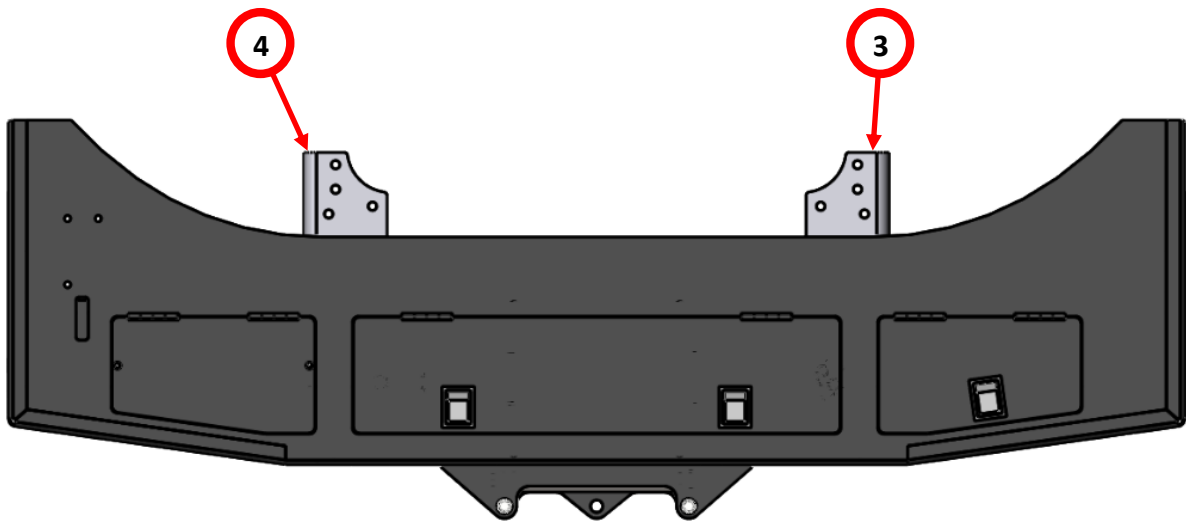
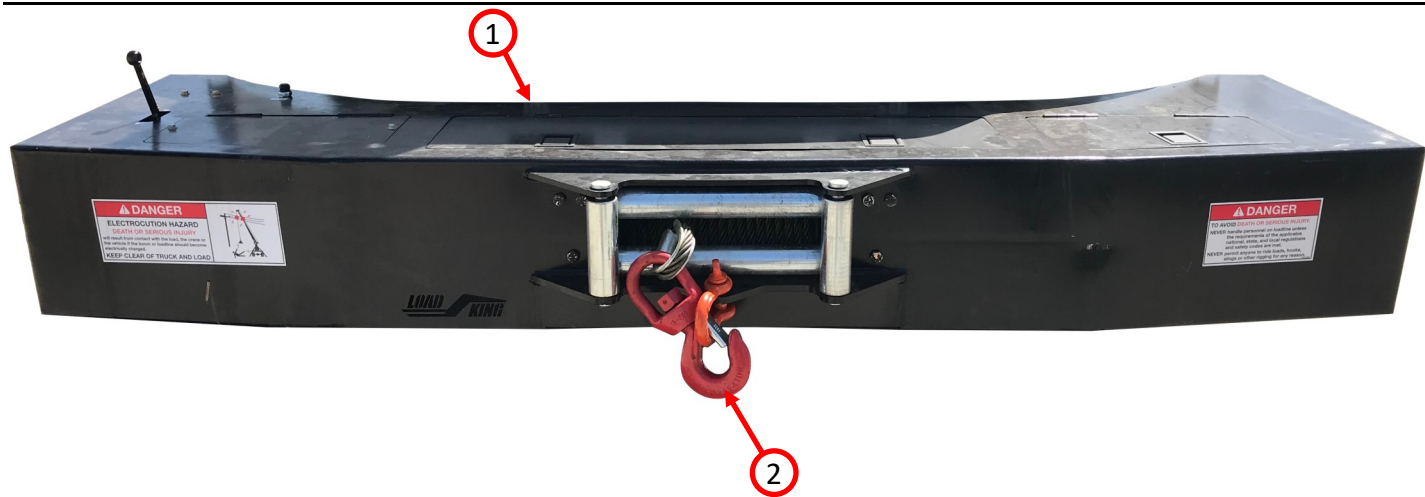


7

ITEM NO.	PART NUMBER	DESCRIPTION	QTY.
1	7376102827	DANGER DECAL	1
2	1006826	DANGER ELECTROCUTION HAZARD DECAL	1
3	1006827	GENUINE PARTS DECAL	1
4	437033	ENGINE BUTTON DECAL	1
5	433560C	THROTTLE BUTTON DECAL	1
6	1006828	"IN" DECAL	2
7	1006829	"OUT" DECAL	2



FRONT BUMPER WINCH ASSEMBLY PARTS



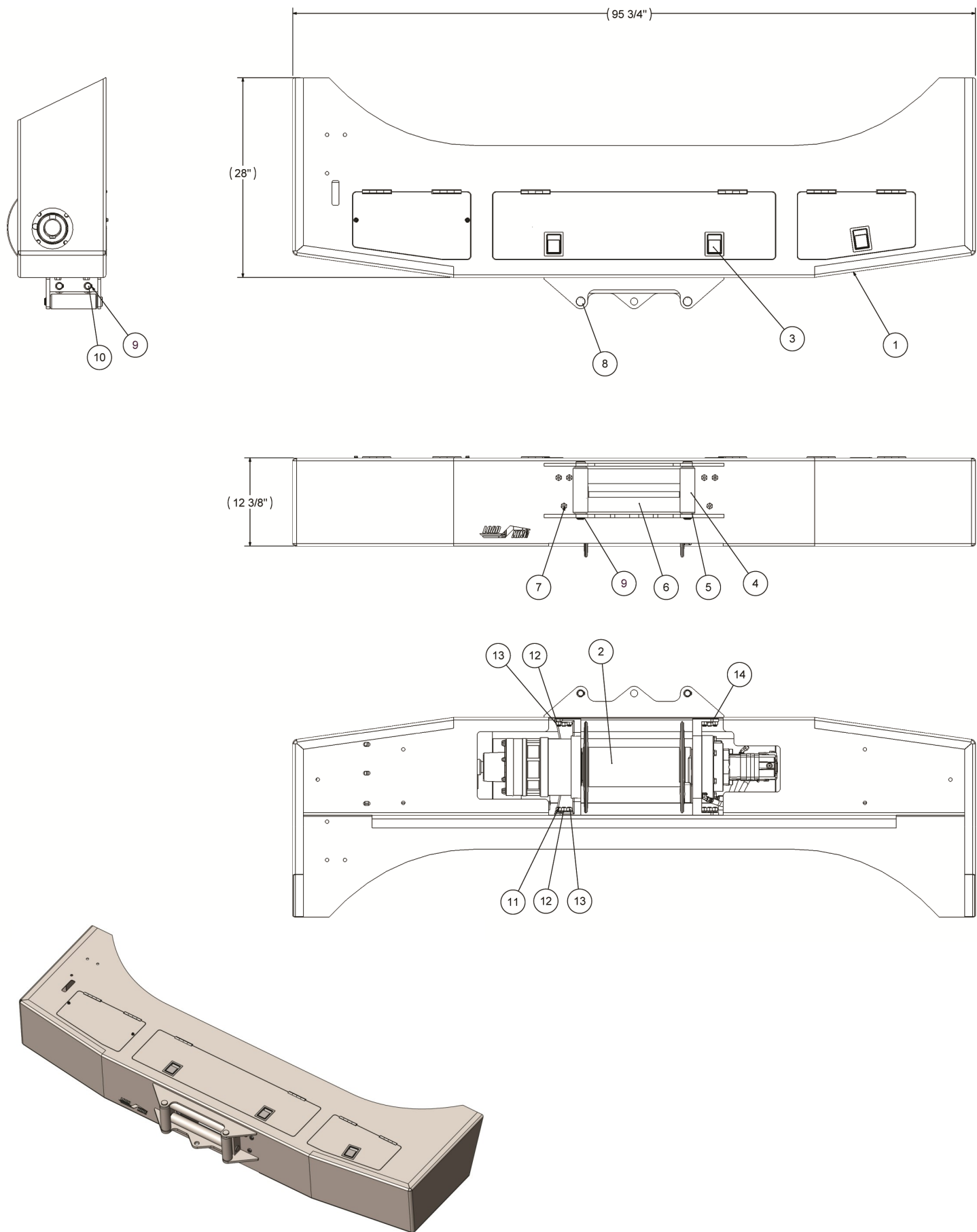


## FRONT BUMPER WINCH ASSEMBLY PARTS

ITEM NO.	PART NUMBER	DESCRIPTION	QTY.
1	BMP00002	20K WINCH BUMPER W/CURBSIDE CAPSTAN	1
2	AS-210-TP5/8X201	5/8X20 1 FT WINCH CABLE W/SWIVEL HOOK	1
3	BMP00037*	BUMPER BRACKET RH	1
4	BMP00038*	BUMPER BRACKET LH	1
5	1005455	CAB CONTROLS, UTILITY BUMPER WINCH	1

**\*NOTE:** Items #3 and #4 (BMP00037 AND BMP00038) are chassis specific. Contact Load King for questions regarding the replacement of these parts.

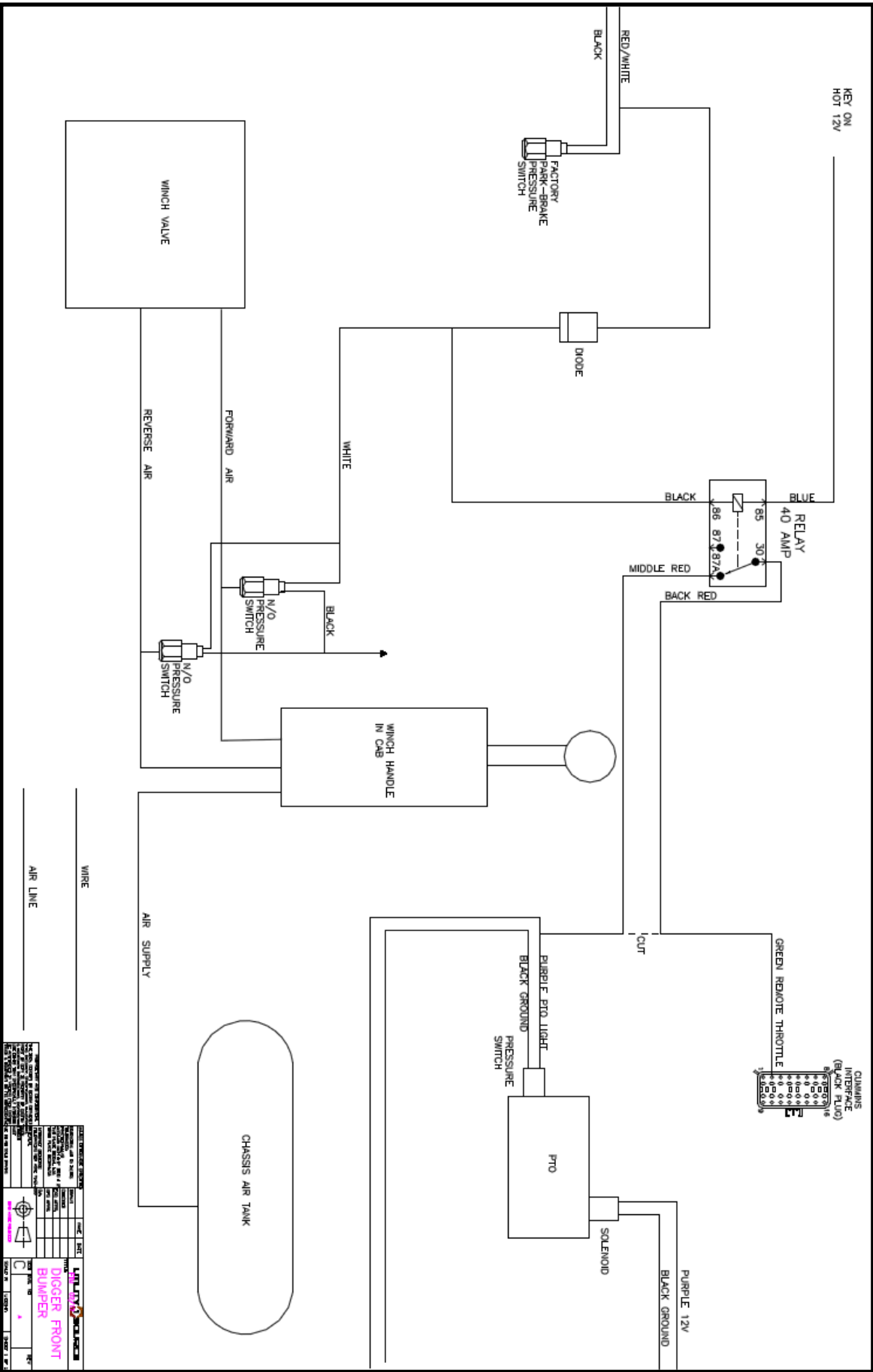
FRONT BUMPER WINCH ASSEMBLY (BMP00002)



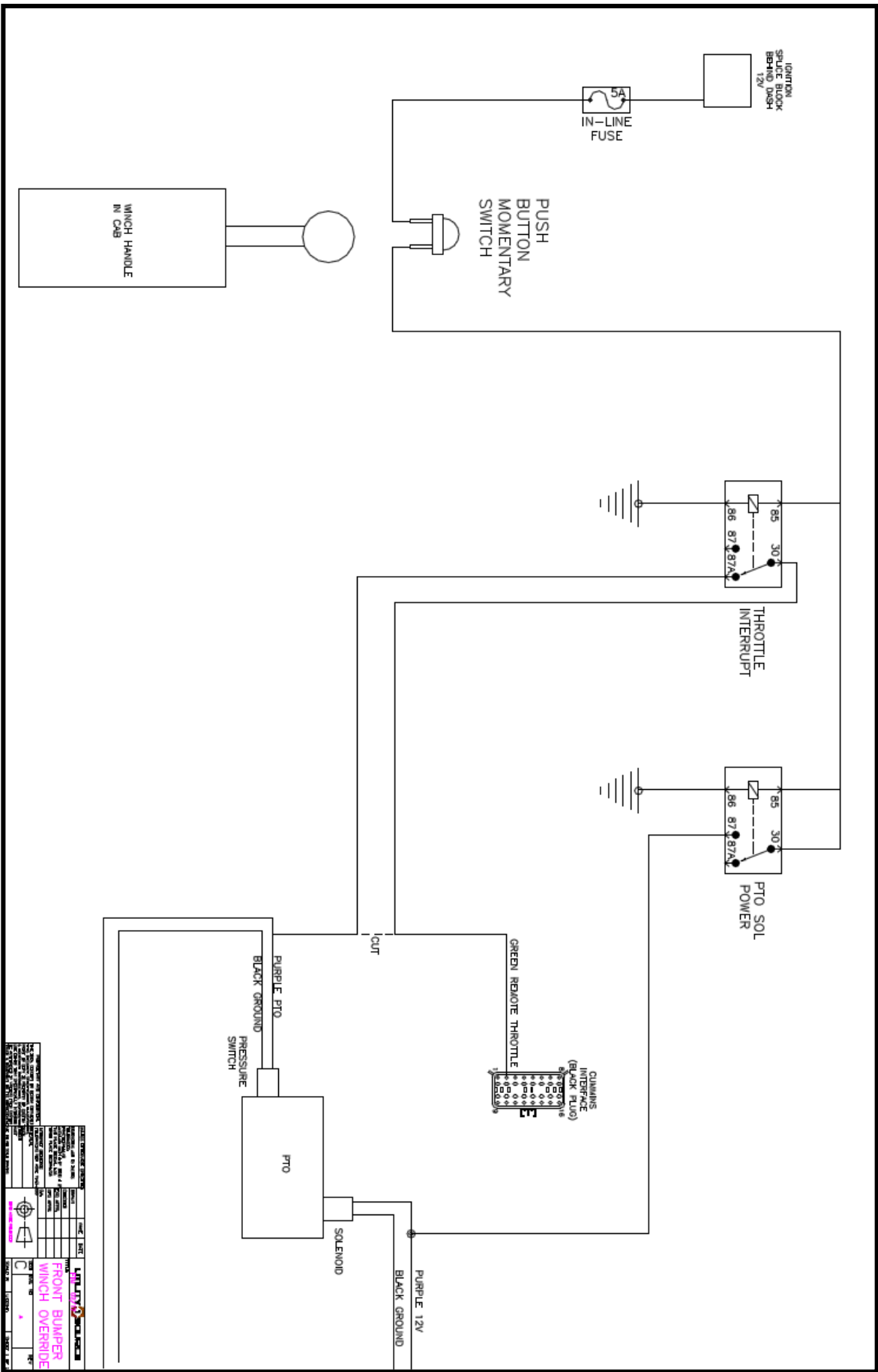
**FRONT BUMPER WINCH ASSEMBLY (BMP00002)**

ITEM NO.	PART NUMBER	DESCRIPTION	QTY.
1	BMP00006	BUMPER WELDMENT W_CAPSTAN	1
2	BMP00004	TWG 20K WINCH W CAPSTAN	1
3	BMP00025	DOOR LATCH McM# 11585A71	3
4	BMP00026	BUMPER VERTICAL ROLLER	2
5	BMP00027	ROLLER BRG McM# 2938T570	8
6	BMP00028	BUMPER HORIZONTAL ROLLER	2
7	MP5-5514	EXTERNAL RETAINING RING HD	4
8	BMP00029	BUMPER VERT ROLLER PIN	2
9	BMP00031	EXTERNAL RETAINING RING HD	4
10	BMP00030	BUMPER HORZ ROLLER PIN	2
11	MP5-0096-114	HHCS 1/2-13 x 1 3/4 LG GR8	12
12	MP5-5513-10	LOCK WASHER 1/2	12
13	MP5-1412-807	HEX NUT 1/2-13	12
14	BMP00036	SHIM PLATE	2

DIGGER FRONT WINCH OVERRIEDE — SCHEMATIC

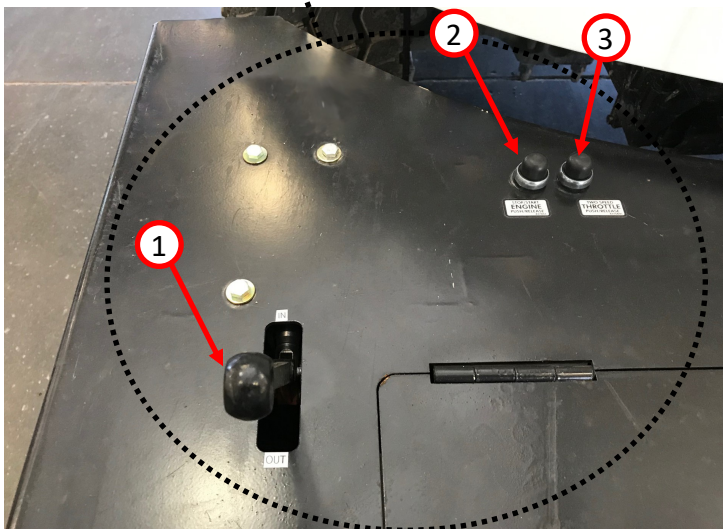


## FRONT BUMPER WINCH OVERRIDE — SCHEMATIC



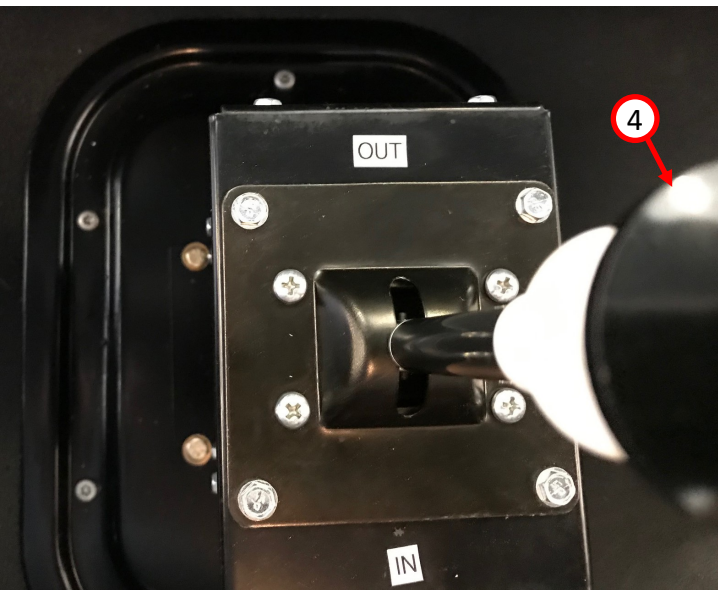
OPERATION

CONTROLS



ITEM	DESCRIPTION
1	Outside - In/out lever
2	Stop/start engine push/release
3	Two speed throttle push/release
4	Interior Cab - In/out lever

**NOTE:** Two speed throttle push/release button only available on certain models.



## OPERATION

---

### VECHILE RECOVERY



**WARNING:** When using a sheave block with the winch for vehicle recovery, only use one of the proper set up methods as shown below.





ADDITIONAL RESOURCES



For information regarding winch operating instructions, service and maintenance, and winch components, refer to the provided hydraulic winch manufacturer manual shown below.

ITEM	MANUAL NAME
1	HYDRAULIC WINCHES 20BBX5L2G & 20BBX5R2G

SERVICE AND MAINTENANCE

For service and maintenance, replacement parts:  
Contact the Call & Information Center at **833-CT1S-911 (833-281-7911)** or email: **CIC@CUSTOMTRUCK.COM**

REVISION CONTENT

REVISION	DATE	DESCRIPTION
A	06/17/19	INITIAL RELEASE
B	06/30/20	ADDED VEHICLE RECOVERY INSTRUCTIONS



Load King

PO Box 427

Elk Point, South Dakota, USA 57025-0427

Toll Free: (888) 264-5522