

STINGER 80-160



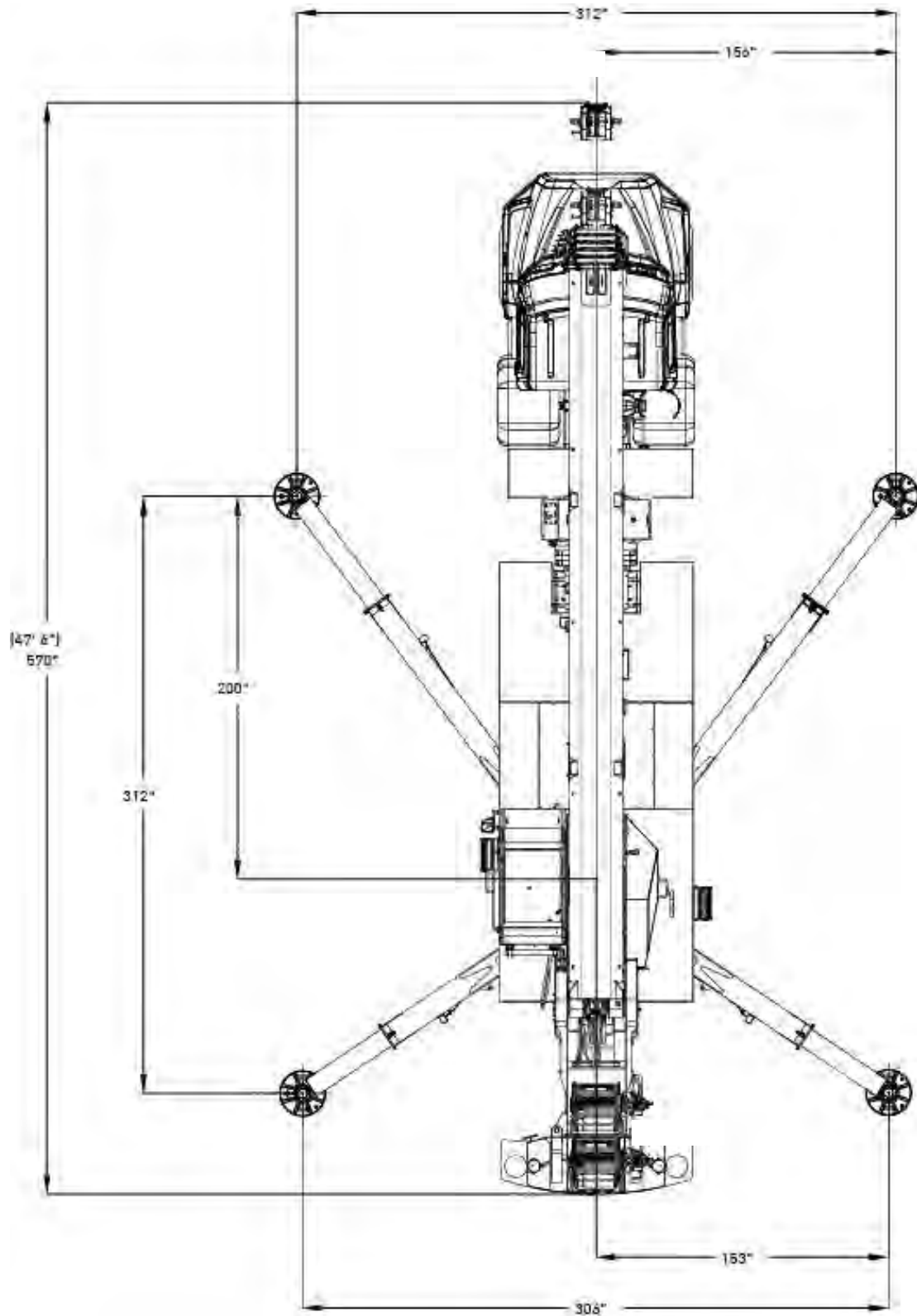
Features: STINGER 80-160

- 80 USt @ 10 ft
- 160 ft full power main boom
- 170 ft maximum tip height
- 30-58 ft optional offsettable bi-fold swing away jib
- 228 ft maximum tip height with 58 ft jib
- Tilting operator cab (0 - 18 degrees)
- Electronic rated capacity indicator
- All new crane control system
- Quick reeve boom head

DIMENSIONS

STINGER 80-160

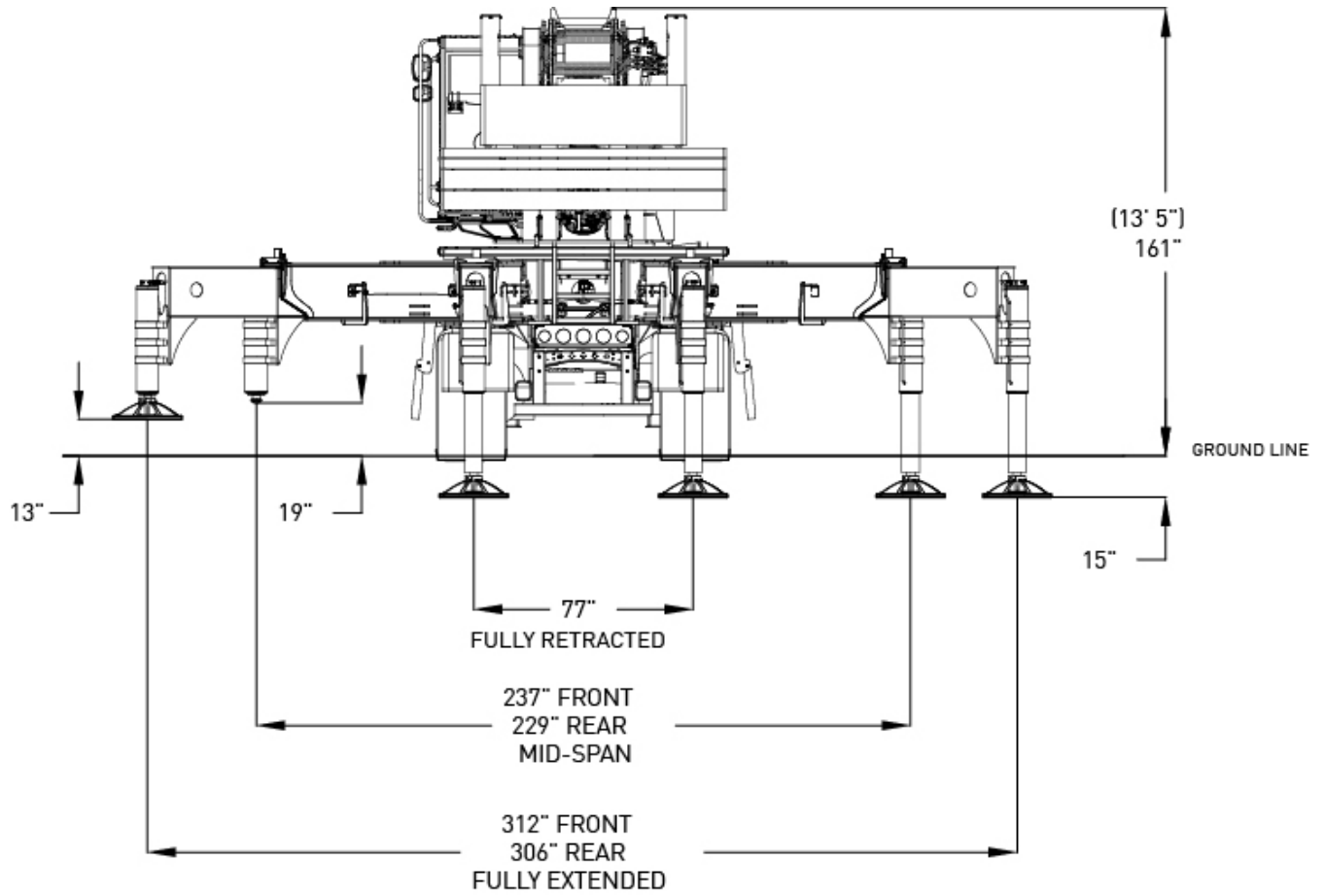
Crane Dimensions



DIMENSIONS

STINGER 80-160

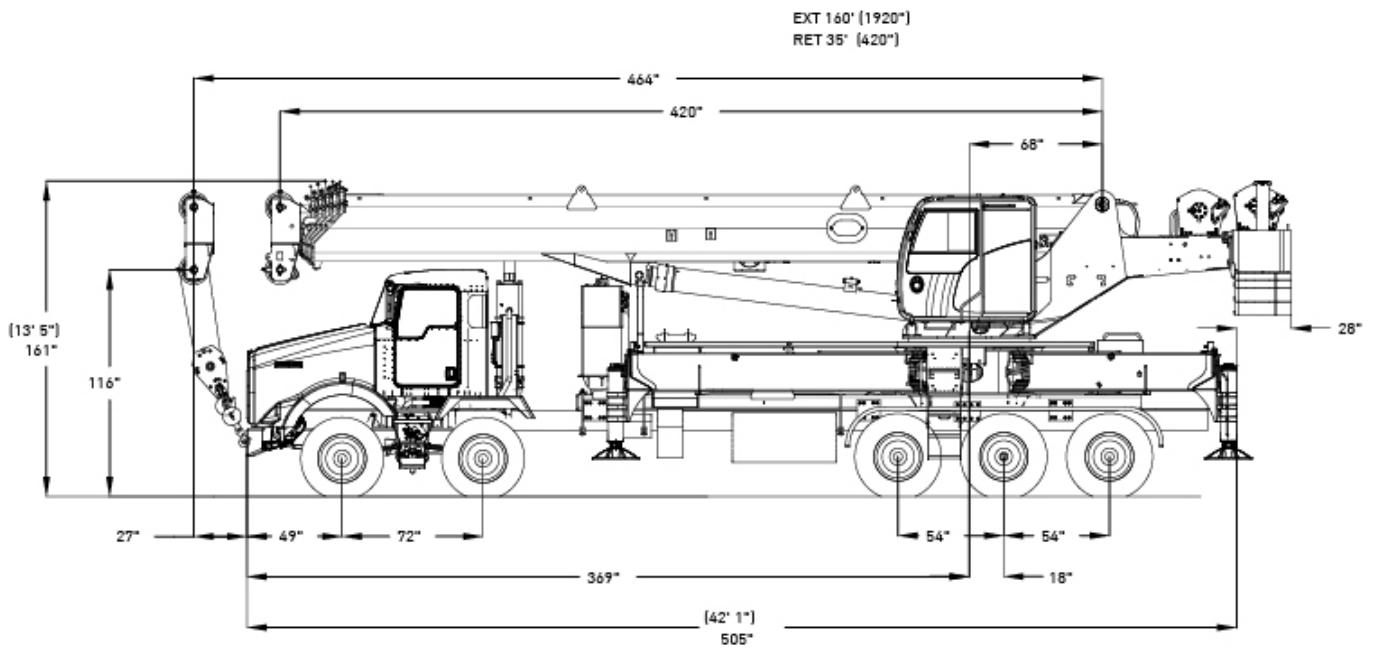
Crane Dimensions



DIMENSIONS

STINGER 80-160

Crane Dimensions

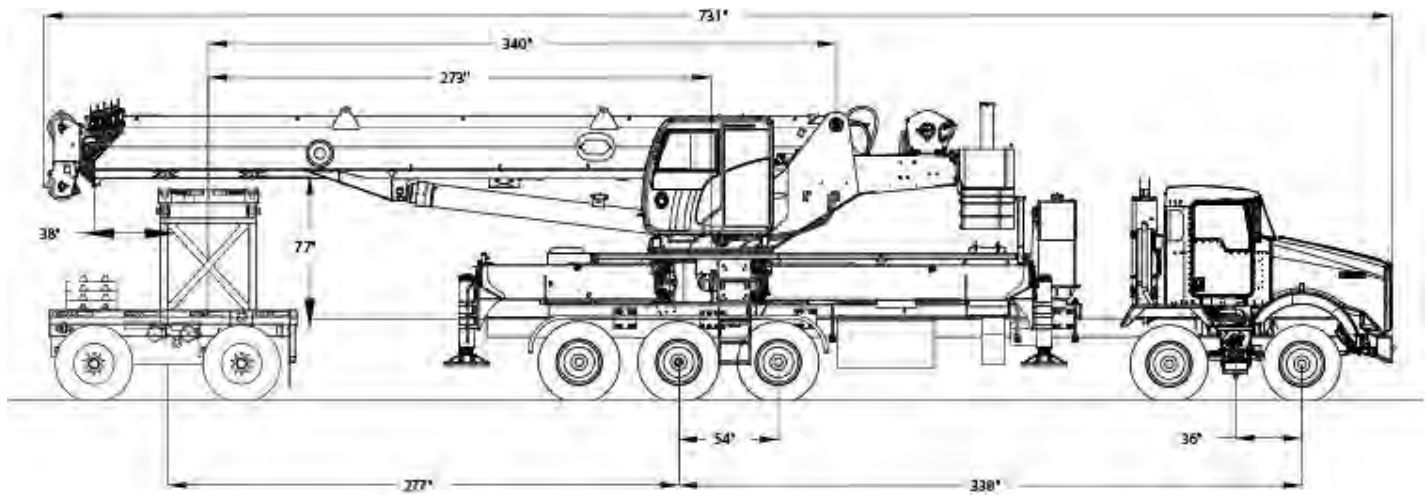


All Customer Chassis Must be Pre-Approved by Factory

DIMENSIONS

STINGER 80-160

Crane Dimensions with Boom Dolly



Estimated Axle Weight Distributions
Gross Wt. = 113,300

Configuration (Counterweights:)	Tandem Front Axles	Tridem Rear Axles	Dolly
12000 LBS ON DOLLY	25,600	50,000	37,700

SPECIFICATIONS

STINGER 80-160

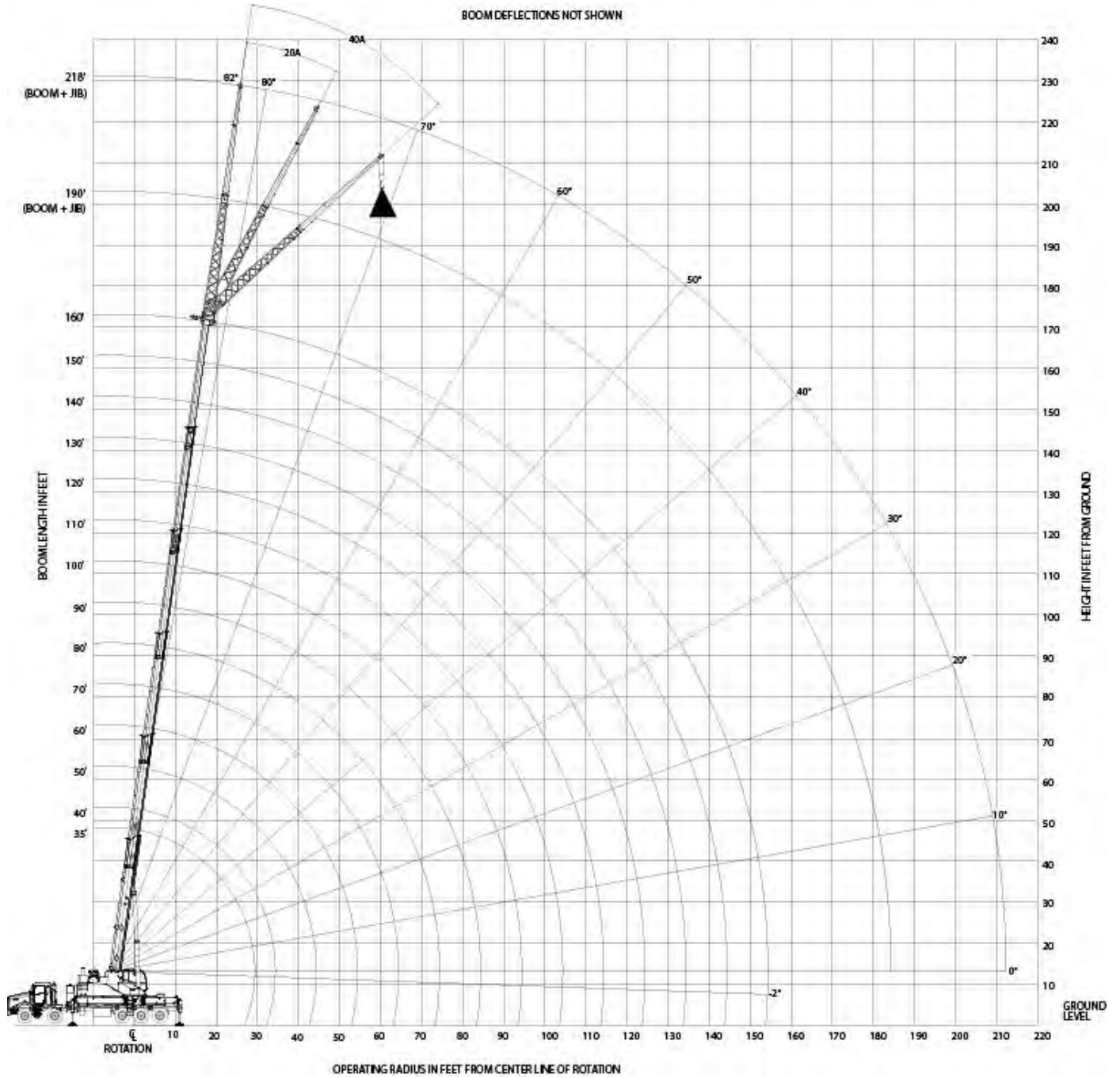
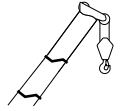
Approximate Crane Weights

Configuration: 1/4 tank fuel 200 lb operator seated in driver's cab 160 ft boom / no jib Base counterweight Aux winch	62,084	16,679	45,405
Options: Full fuel tank	750	250	500
30'-58' bi-fold jib	2,706	2,282	424
80 ton 5 sheave block at bumper	1,608	2,246	-638
60 ton 5 sheave block at bumper	1,204	1,798	-594
50 ton 3 sheave block at bumper	1,036	1,447	-411
12 ton overhaul-ball at bumper	420	578	-158
2000 lb counterweight on superstructure	2,000	-717	2,717
2000 lb on storage rack	2,000	1,277	723
4000 lb counterweight on superstructure	4,000	-1,434	5,434
4000 lb on storage rack	4,000	2,554	1,446
Bare chassis (EST)	27,040	16,740	10,300

RANGE DIAGRAM

STINGER 80-160

Outriggers Fully Extended



LOAD CHART

STINGER 80-160

Outriggers Fully Extended



Standard ASME
B30.5

ft	Boom Length														ft		
	35 ft	40 ft	50 ft	60 ft	70 ft	80 ft	90 ft	100 ft	110 ft	120 ft	130 ft	140 ft	150 ft	160 ft			
lbs	lbs	lbs	lbs	lbs	lbs	lbs	lbs	lbs	lbs	lbs	lbs	lbs	lbs	lbs	lbs		
10	160,000															10	
12	130,550	126,300	119,900	80,000	42,950											12	
15	113,800	109,850	103,750	80,000	42,950	42,800	42,400	39,500	35,900							15	
20	93,250	90,200	84,750	80,000	42,950	42,800	39,950	35,550	32,500	29,500	27,100					20	
25	76,200	75,550	71,450	67,650	42,950	42,800	36,650	32,700	29,700	26,900	24,250	22,550	20,700			25	
30		58,450	56,300	54,800	42,950	40,650	34,200	30,300	27,300	24,400	22,350	20,800	19,350	18,150		30	
35			40,650	39,350	41,100	38,350	32,150	28,250	25,000	22,600	20,700	19,300	17,900	16,750		35	
40			35,950	29,550	31,250	32,350	30,450	26,550	23,400	21,100	19,350	17,800	16,700	15,750		40	
45				27,800	24,450	25,500	26,350	24,650	22,000	19,800	18,100	16,700	15,650	15,000		45	
50				24,500	21,550	20,550	21,300	21,900	20,750	18,700	17,100	15,700	14,600	13,200		50	
55					20,700	17,950	17,500	18,050	18,500	16,950	15,350	14,300	12,950	12,950		55	
60					18,000	17,100	15,350	15,050	15,500	15,100	13,850	12,950	12,800	11,500		60	
65						15,800	14,600	13,350	13,050	13,350	12,950	12,350	11,500	10,150		65	
70							13,750	13,950	12,350	11,450	11,350	11,600	11,150	10,300	9,150	70	
75								12,250	11,850	10,950	10,100	9,950	10,100	9,400	8,200	75	
80								10,750	10,900	10,300	9,300	8,500	8,700	8,500	7,450	80	
85									9,650	9,550	8,600	7,750	7,700	7,750	6,700	85	
90									8,550	8,650	7,950	7,150	7,150	7,150	6,050	90	
95										7,700	7,450	6,700	6,700	6,400	5,550	95	
100										6,850	6,900	6,200	6,200	5,550	4,850	100	
105											6,150	5,850	5,750	4,850	4,150	105	
110											5,500	5,450	5,100	4,200	3,500	110	
115												4,950	4,500	3,600	2,900	115	
120												4,450	3,950	3,100	2,400	120	
125													3,450	2,600	1,950	125	
130														3,050	2,200	1,500	130
135															1,800	1,100	135
140															1,400		140

Note this chart has no deduct for a stowed jib and assumes the operator chooses the better boom configuration (strength or stability) for the planned lift. Charts are also available at mid-span and retracted outrigger positions and with counterweight configurations at 3, 5, 7 and 11,000 lbs.

Notes to lifting capacity

Lifting capacities do not exceed 85% of tipping load. Weight of hook blocks and slings are part of the load, and are to be deducted from the capacity ratings. Consult operation manual for further details.

Note: Data published herein is intended as a guide only and shall not be construed to warrant applicability for lifting purposes. Crane operation is subject to the computer charts and operation manual both supplied with the crane.

LOAD CHART

STINGER 80-160

With Jib, Outriggers Fully Extended



15000



360°

Standard ASME
B30.5



ft	Boom Length		ft	Boom Length		ft	Boom Length	
	140 ft	160 ft		140 ft	160 ft		140 ft	160 ft
40	14,300	13,050	50	8,900	8,350	55	6,850	6,450
45	13,000	11,850	55	8,350	7,800	60	6,550	6,150
50	12,000	10,950	60	7,850	7,400	65	6,250	5,900
55	11,000	10,000	65	7,450	7,000	70	6,050	5,700
60	10,200	9,200	70	7,050	6,650	75	5,800	5,450
65	9,450	8,450	75	6,700	6,250	80	5,550	5,200
70	8,700	7,700	80	6,400	6,000	85	5,400	5,050
75	7,900	7,000	85	6,100	5,750	90	5,200	4,850
80	7,250	6,350	90	5,800	5,450	95	5,050	4,700
85	6,700	5,750	95	5,550	5,000	100	4,850	4,600
90	6,100	5,300	100	5,350	4,600	105	4,700	4,300
95	5,650	4,800	105	4,950	4,200	110	4,600	4,000
100	5,150	4,400	110	4,500	3,850	115	4,200	3,650
105	4,850	4,050	115	4,150	3,500	120	3,650	3,300
110	4,500	3,700	120	3,950	3,250	125		3,000
115	4,200	3,350	125	3,700	2,950	130		2,700
120	3,950	3,050	130	3,450	2,650			
125	3,650	2,800	135	3,250	2,350			
130	3,400	2,400	140	3,000	1,900			
135	3,150	1,950	145	2,800	1,500			
140	3,000	1,550	150	1,050	1,100			
145	2,800	1,200						
150	2,450							
155	2,150							
160	1,850							

Note this assumes the operator chooses the better boom configuration (strength or stability) for the planned lift. Charts are also available at the mid-span outrigger positions and with counterweight configurations at 7 and 11,000 lbs.

Notes to lifting capacity

Lifting capacities do not exceed 85% of tipping load. Weight of hook blocks and slings are part of the load, and are to be deducted from the capacity ratings. Consult operation manual for further details.

Note: Data published herein is intended as a guide only and shall not be construed to warrant applicability for lifting purposes. Crane operation is subject to the computer charts and operation manual both supplied with the crane.

LOAD CHART

STINGER 80-160

With Jib, Outriggers Fully Extended



15000



360°

Standard ASME
B30.5



Bi-fold

58 ft








ft	Boom Length		ft	Boom Length		ft	Boom Length	
	140 ft	160 ft		140 ft	160 ft		140 ft	160 ft
50	9,300	8,800	65	5,100	4,850	80	3,500	3,300
55	8,450	7,900	70	4,800	4,600	85	3,350	3,150
60	7,750	7,350	75	4,600	4,350	90	3,250	3,050
65	7,200	6,750	80	4,300	4,100	95	3,050	2,950
70	6,650	6,200	85	4,100	3,850	100	3,000	2,800
75	6,150	5,800	90	3,850	3,700	105	2,900	2,700
80	5,750	5,450	95	3,700	3,500	110	2,750	2,600
85	5,350	5,100	100	3,500	3,350	115	2,650	2,450
90	5,000	4,800	105	3,350	3,150	120	2,500	2,400
95	4,700	4,500	110	3,150	3,050	125	2,450	2,350
100	4,400	4,150	115	3,050	2,900	130	2,350	2,250
105	4,150	3,750	120	2,950	2,750	135	2,300	2,150
110	3,950	3,400	125	2,800	2,650	140	2,250	2,050
115	3,700	3,100	130	2,700	2,500	145	2,150	2,000
120	3,450	2,800	135	2,600	2,350	150		1,750
125	3,150	2,500	140	2,450	2,100	155		1,600
130	2,950	2,300	145	2,350	1,900	160		1000
135	2,650	2,050	150	2,100	1,650			
140	2,450	1,800	155	1,900	1,450			
145	2,350	1,600	160	1,800	1,250			
150	2,150	1,400	165	1,750				
155	2,000	1,100	170	1650				
160	1,900		175	1450				
165	1,700							
170	1,600							
175	1,450							
180	1,250							

Notes to lifting capacity

Lifting capacities do not exceed 85% of tipping load. Weight of hook blocks and slings are part of the load, and are to be deducted from the capacity ratings. Consult operation manual for further details.

Note: Data published herein is intended as a guide only and shall not be construed to warrant applicability for lifting purposes. Crane operation is subject to the computer charts and operation manual both supplied with the crane.

Boom, Jib and Rotation

 <p>Stability</p>	Six-section full power telescopic boom with A and B modes		
	Boom length	Retracted	35 ft
		Extended	160 ft
	Boom maximum tip height		170 ft
	Boom elevation angle range (min. / max.)		-2° / 82°
 <p>Strength</p>	Boom extend / retract speed		113 / 101 Sec
	Boom up / down speed		60 / 50 Sec
	Boom head		quick reeving
	360° continuous rotation		
Optional			
	Bi-fold swing away jib can be offset to 0°, 20° or 40°		30 ft / 58 ft
	Maximum tip height with extended jib		228 ft
	5 sheave block, quick reeve		80 USt
	5 sheave block, quick reeve		60 USt
	3 sheave block, quick reeve		50 USt
	Top swivel ball with hook and latch		12 USt

Main and Aux Hoist, Rope and Hook

	Two speeds	Low Speed:	High Speed:
	First layer (no load speed)	204 ft/min	363 ft/min
	Fifth layer (no load speed)	293 ft/min	522 ft/min
	First layer	Low Speed:	High Speed:
		17,500 lb	8,360 lb
	Fifth layer	12,180 lb	5,820 lb
	Permissible line pull		15,900 lb
	Average breaking strength		80,000 lb
			600' of 3/4 in

Operator Cab

	<p>Sliding door Sliding window on the right side Tilting, tinted glass skylight Removable front windshield Six-way adjustable heated seat with armrest dual-axis electro-proportional joysticks Joystick control for hoist(s), swing and boom elevation Foot pedals for swing brake and engine rpm Hand control for engine rpm Hydraulic cab tilt (0-18 degrees)</p>
	<p>Optional features for upper cab Hydraulically powered air-conditioning and flameless heater Work lights</p>
	<p>Electronic rated capacity indicator with color display</p>
	<p>Color touch-screen display with screens for lifting, environmental controls, engine data. Allows operator to adjust speeds of all functions on-the-fly to adapt to different lifting conditions All crane manuals and load charts are loaded into the display</p>

Boom Rotation

	<p>Glide swing with foot pedal actuated multi-disc brake and air actuated 360° house lock</p>
	<p>Hydraulic driven double planetary reduction gear drive 2.2 rev/min</p>

Counterweight

	<p>Main counterweight, non removable, bolted to upper crane structure 3,000 lbs Removable counterweight package 2 x 2,000 lbs / 2 x 4,000 lbs</p>
--	--

Outriggers

	<p>X-pattern</p>	<p>Swing out and down</p>	<p>Outer edge of pad</p>
	<p>Fully Extended</p>	<p>Front: Rear:</p>	<p>28' 27' 6"</p>
	<p>Mid Span</p>	<p>Front: Rear:</p>	<p>21' - 9" 21' - 1"</p>
	<p>Fully Retracted</p>	<p>Front and rear:</p>	<p>8' - 5"</p>

LOCATIONS



24/7 CALL CENTER
833-281-7911

PARTS QUESTIONS
833-PARTSLK (833-727-8755)
PARTSSUPPORT@LOADKINGMFG.COM

PARTS ORDERS
STORE.LOADKINGMFG.COM

WARRANTY
CRANEWARRANTY@LOADKINGMFG.COM

All our new cranes are backed by an industry-leading 3-year basic and 5-year structural warranty

L LOAD KING AUTHORIZED SERVICE CENTERS

1 CUSTOM TRUCK ONE SOURCE LOCATIONS

www.loadkingmfg.com

