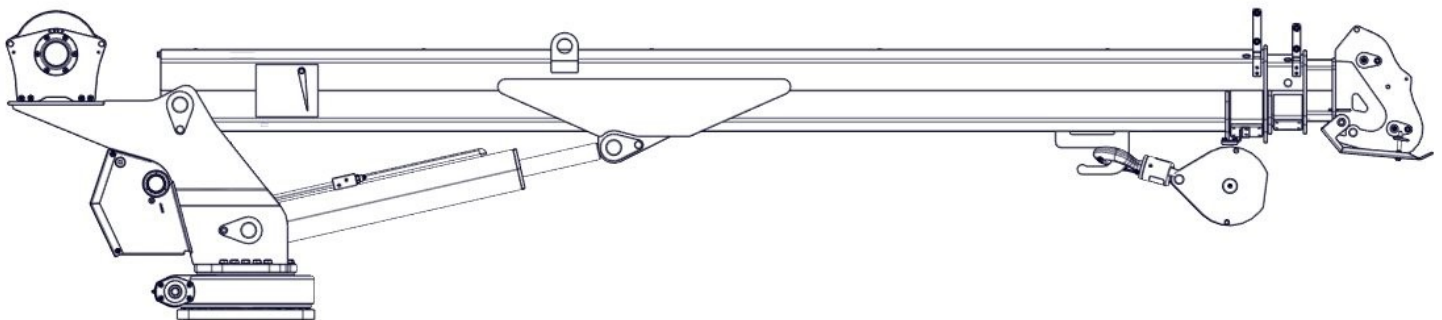




OPERATION, SERVICE, & PARTS MANUAL for 7500 SERVICE CRANES



Manual P/N BDY32036

For service and maintenance, reach out to the call & information center at
[833-CT1S-911 \(833-281-7911\)](tel:833-CT1S-911) or email CIC@CUSTOMTRUCK.COM.

REV D

AUGUST, 2020

PAGE INTENTIONALLY LEFT BLANK

Table of Contents

1.0 Specifications.....	7
1.1 General Specifications.....	7
1.2 Load Chart	9
1.3 Dimensions	12
1.4 Hydraulic Requirements.....	12
1.5 Minimum Chassis Requirements	12
1.6 Detailed Crane Functions Described	12
2.0 Safety and Operations.....	13
2.1 Safety	13
2.2 Responsibilities of Owners, Users and Operators	15
2.3 Features of the Load King 7500 Crane	15
3.0 Service	18
3.1 Inspection	18
3.2 Maintenance.....	19
Crane Assembly	28
Turret Assembly	30
Winch	32
Winch Break	34
Control Valve	36
Valve Cover.....	38
Boom Assembly.....	40
Boom Tip Light	52
Extension Cylinder	54
Snatch Block	56
Load King 7500 Service Crane Labels.....	58
Warranty	73

Company

Load King has been producing quality trailers since 1956. We are located in Elk Point, South Dakota.

Although the trailer industry is an ever-changing environment and we've seen many changes over the years, we have remained committed to the simple philosophy that we will make a reasonable profit through the designing, manufacturing, and marketing of top quality products that we can always be proud to call Load King. We have not, and will not, compromise in this area.

Quality shows in all facets of an operation, from the moment you make your first phone call for a product inquiry to the time you sell your used equipment and realize you've received top dollar on your sale. We continue to strive for excellence in every area and never quit trying to improve. We have earned our reputation believing that quality is value and value sells products.

Through our shared Engineering, Marketing and Sales teams, Load King and Custom Truck One Source bring that tradition of quality and value to another market with the Load King 7500 Service Crane.






About Custom Truck One Source

Beginning in February of 2015, three family-owned and operated companies (Custom Truck & Equipment, Utility Fleet Sales and Forestry Equipment of VA) joined together to form what is now Custom Truck One Source. Shortly after its inception, UCO Equipment became a part of the CTOS family along with TNT Equipment six months later. In December 2015, CTOS welcomed its sixth company under its brand, Load King, a leading manufacturer of high-quality and customizable trailers.

The announcement of the partnership represented the platform's collective commitment to the continued growth and dominance of each legacy company's individual offerings, now compounded to leverage the expertise of the team and, ultimately, better serve loyal CTOS customers all over the world. CTOS will build upon the market positions of each legacy company, while serving as a single source supplier of specialty equipment and services for the utility and heavy equipment industries. The utility and heavy equipment platform collectively offers sales, rentals, parts and after market services, remanufacturing, customized equipment and transportation.

DEFINITIONS USED IN THIS MANUAL

The following table describes text and symbols used to highlight important information.

Signal Word	Symbol	Explanation
DANGER		Danger is used to alert readers about an immediate and serious hazard that will likely be fatal.
WARNING		Warning is used to alert readers about the potential for serious injury or death or serious damage to equipment.
CAUTION		Caution is used to alert readers about the potential for anything from moderate injury to serious equipment damage or destruction.
READ		Read is used to alert readers of information to be read on machinery
NOTE		Note is used for a tip or suggestion to help readers carry out a procedure successfully.

Table—1

1.0 Specifications

Description The Load King 7500 Service Crane is hydraulically powered with proportional control for all functions. The crane is provided with remote control which utilizes a **Canbus** controller. Maximum reach is 30 feet and boom elevation varies from -15 to +80 degrees. Loads can be controlled at angles below level as well as above level. Rotation is 380 degrees total. With boom tip lighting the unit also serves as a mobile work light.

1.1 General Specifications

7522 Crane Specifications	
Crane Rating	51,000 FT-# (7.07 ton-m)
*FT-# is the horizontal distance from the center of rotation to the load line x the weight of the load	
Horizontal Reach	22'-0" (6.71 m)
Hydraulic Extend	108" (5.58 m)
Crane Weight	1692 # (769 kg)
Center of Gravity	44.0" (1.11 m) Forward of Centerline
Load Line	3/8" IWRC x 120 FT (9.53 mm x 39.4 m)
Storage Height	40 9/16" (1.03 m)
Storage Length	15' - 7" (4.75 m)
Mounting Plate	1 1/4" Thick (31.8mm)
Bolt Pattern	14.75" x 14.75" (375 mm x 375 mm)

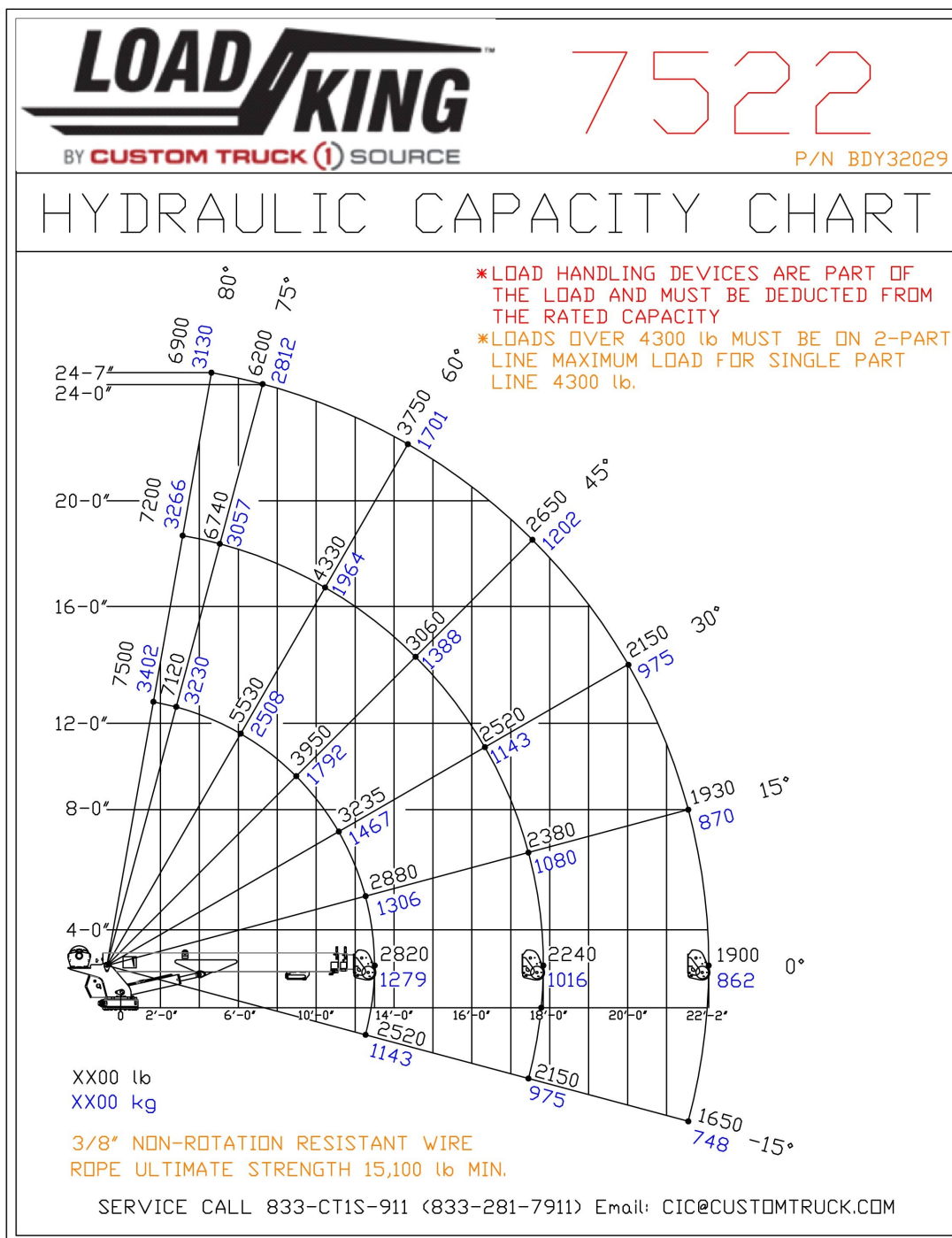
7526 Crane Specifications

Crane Rating	51,000 FT-# (7.07 ton-m)
*FT-# is the horizontal distance from the center of rotation to the load line x the weight of the load	
Horizontal Reach	26'-0" (7.92 m)
Hydraulic Extend	156" (3.96 m)
Crane Weight	1767 # (803 kg)
Center of Gravity	44.13" (1.12 m) Forward of Centerline
Load Line	3/8" IWRC x 120 FT (9.53 mm x 39.4 m)
Storage Height	40 9/16" (1.03 m)
Storage Length	15' - 7" (4.75 m)
Mounting Plate	1 1/4" Thick (31.8 mm)
Bolt Pattern	14.75" x 14.75" (375 mm x 375 mm)

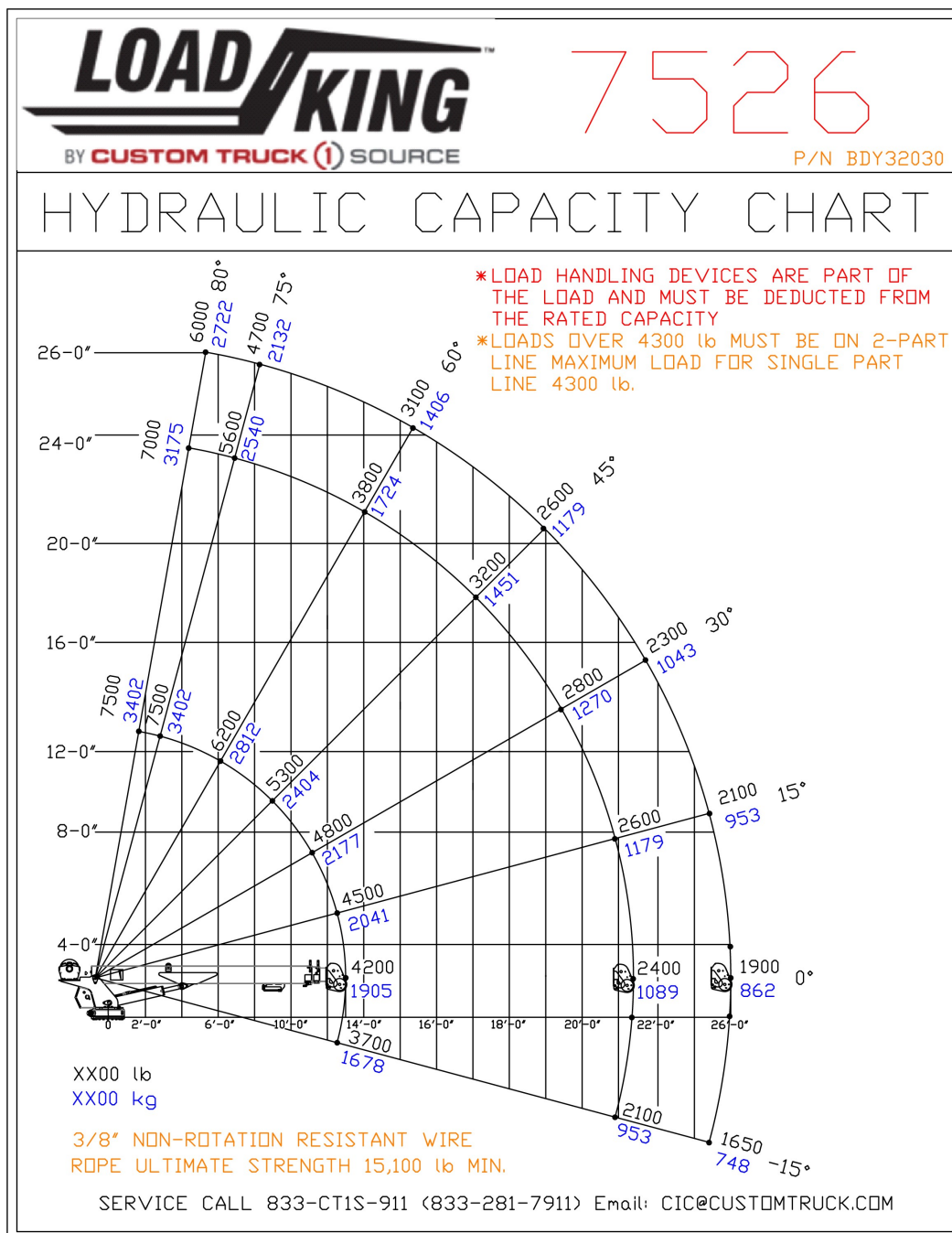
7530 Crane Specifications

Crane Rating	51,000 FT-# (7.07 ton-m)
*FT-# is the horizontal distance from the center of rotation to the load line x the weight of the load	
Horizontal Reach	30'-0" (9.84 m)
Hydraulic Extend	204" (5.58 m)
Crane Weight	1842 # (837 kg)
Center of Gravity	44.24" (1.12 m) Forward of Centerline
Load Line	3/8" IWRC x 120 FT (9.53 mm x 39.4 m)
Storage Height	40 9/16" (1.03 m)
Storage Length	15' - 7" (4.75 m)
Mounting Plate	1 1/4" Thick (31.8mm)
Bolt Pattern	14.75" x 14.75" (375 mm x 375 mm)

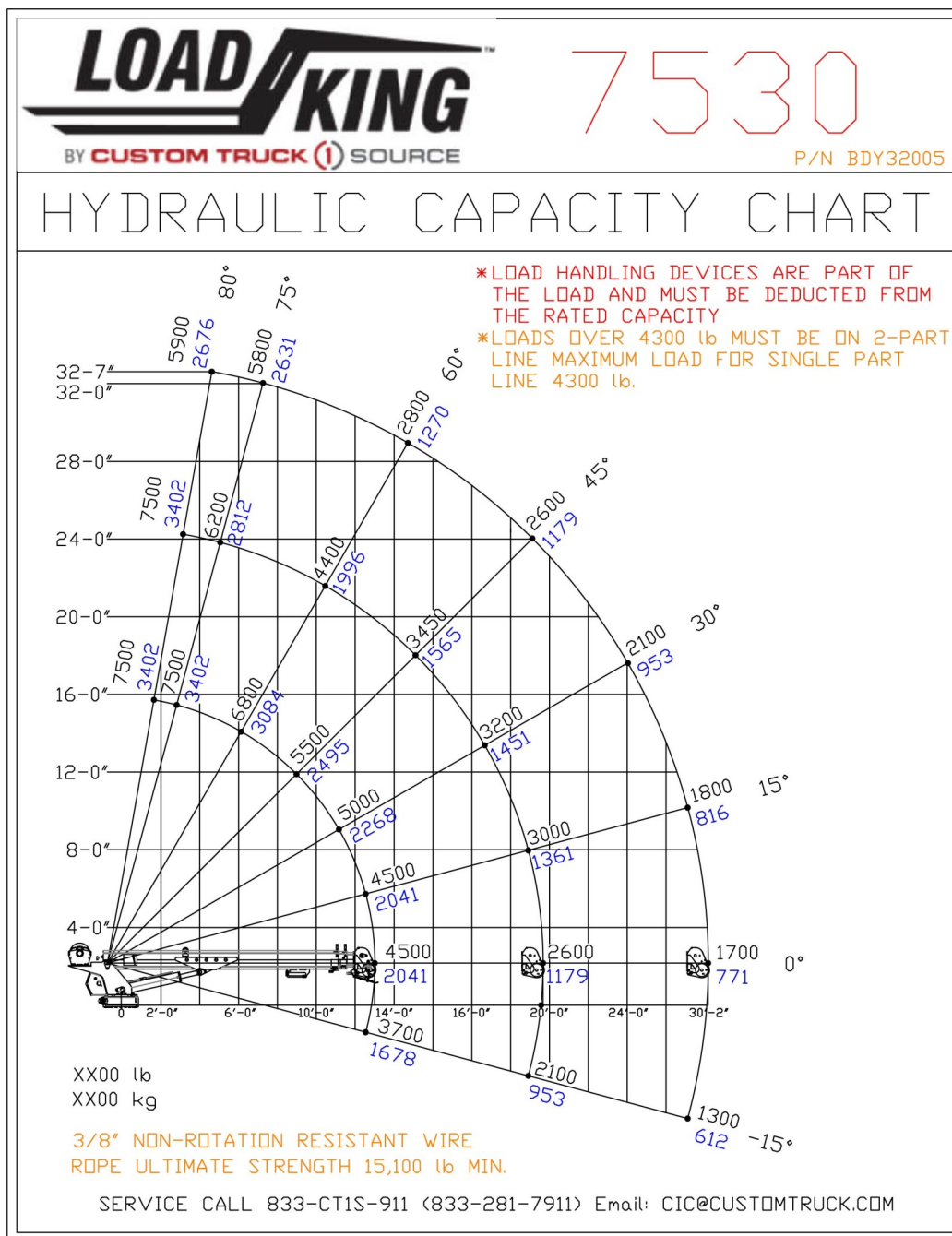
1.2 Load Chart



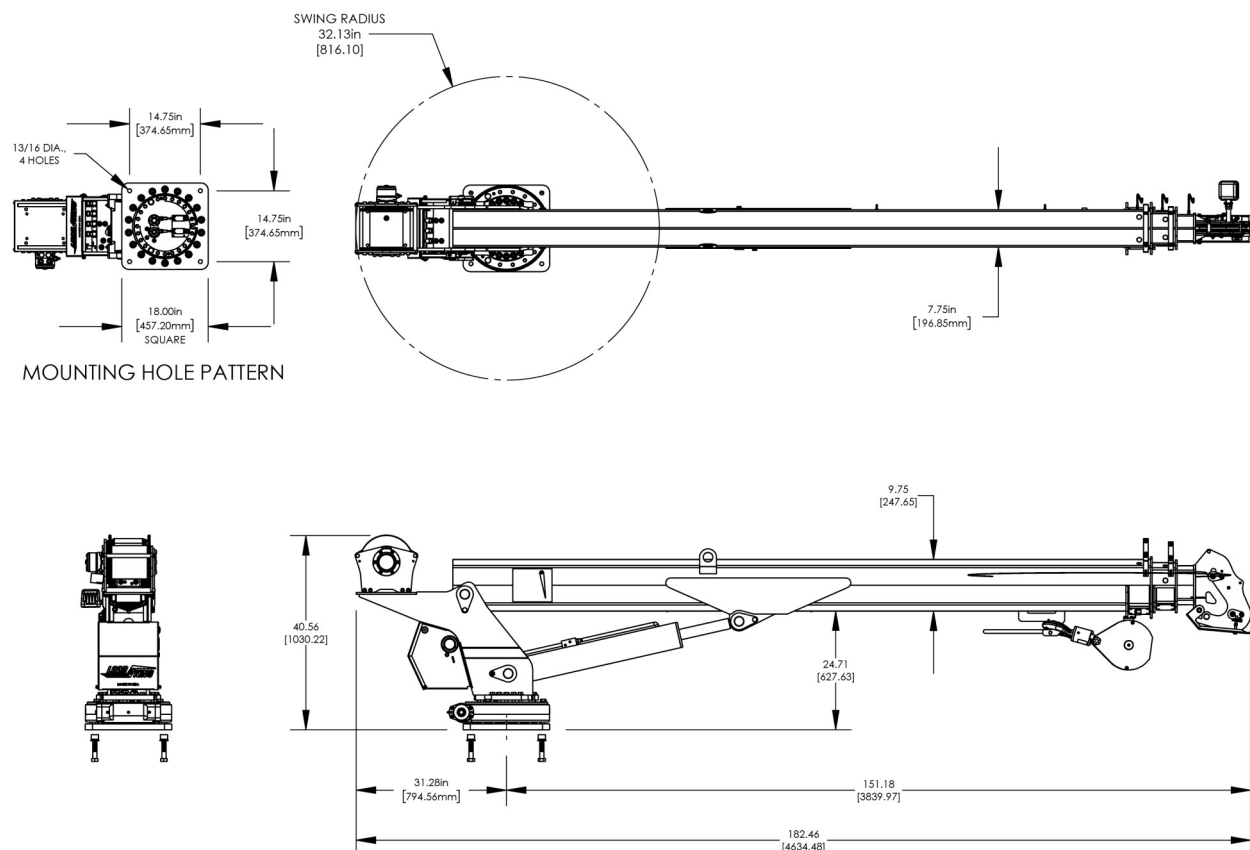
1.2 Load Chart



1.2 Load Chart



1.3 Dimensions



1.4 Hydraulic Requirements

ISO 32 hydraulic fluid, 15 gpm flow @ 3000 psi

1.5 Minimum Chassis Requirements

Rated Bending Moment (RBM)- 479,000 in-#

Gross Vehicle Weight Rating (GVWR)- 18,000 # (11,820 kg)

Body- Load King Voyager I rated 51,000 FT-# (10.81 ton-m)

1.6 Detailed Crane Functions Described

Rotation is 370 degrees non-continuous and is provided by a hydraulic motor driven worm gear slewing drive. Patented hourglass worm technology provides increased gear strength, and the drive is rated IP55 for dust and water incursion.

Boom Extend is provided by two double acting cylinders in a piggyback arrangement. The first cylinder extends/retracts the 2nd stage boom, the second cylinder extends/retracts the 3rd stage boom. The cylinders have a dual counterbalance valve to hold the boom extension above and below level.

Hoist Up and Down is provided by a hydraulic motor connected to a planetary gear box and cable drum with holding brake.

Boom Up and Down is provided by a double acting cylinder with a single counterbalance valve on the base end of the cylinder.

2.0 Safety and Operations

2.1 Safety

It is your responsibility to safely operate and maintain this crane, and adhere to all applicable standards. Be aware of and observe all federal, state, local, and employer safety standards including ASME B30.5 Mobile and Locomotive Cranes, and OSHA 1910.180. If required by state or local standards you may need to become a certified operator before operating this crane.



Prior to operating this unit every person working with a Load King crane should have read and understand all material in this manual. Safe operation requires that the crane not be overloaded, misused or altered, all of which may void the warranty. Operators must understand the lift capacity ratings as shown on the Load Chart. Look at the horizontal distance from the center of rotation and the angle of boom elevation to determine the correct load rating.



For the operator's protection, there are warning labels and safety devices on the Load King Crane that are **NOT** to be tampered with or removed. It is important for the operator to read all warning labels before operating the Load King Crane. It is the owner's responsibility to ensure that the operator and workers on and around the Crane understand all of the safety warnings herein and affixed to the machine. **Do not operate Crane if safety labels are missing or damaged.**



WARNING

This crane is not electrically insulated. It must never be used near energized power lines. Load King cranes, load lines, and the load handled must always maintain a safe minimum distance from electrically energized power lines. See ASME B30.5 for safe minimum distances and your employer's work rules.



WARNING

This crane must be well maintained and regularly inspected for safe and efficient operation. Failure to operate and maintain this crane in accordance with the instructions of this manual can result in serious injury personal injury or death.

**WARNING**

Never alter hydraulic valve settings unless recommended by factory authorized personnel. To do so could result in equipment malfunction or failure and can result in serious personal injury or death.

**WARNING**

Never alter the Hydraulic Overload Protection (HOP) system. Its function is to protect the crane from overload.

**WARNING**

Never alter the Anti-Two Block (A2B). Its function is to prevent contact between the load block and boom tip sheave. The load may be suddenly dropped should contact occur resulting in serious injury personal injury or death.

2.2 Responsibilities of Owners, Users, and Operators



CAUTION

Your Load King 7500 crane is designed for material handling and specifically for hoisting loads within the range of the Load Chart provided.

Owners, users, and operators have specific responsibilities as designated by OSHA 1910.180 and ASME B30.5 and state or local requirements. Failure to comply with these regulations can result in citations and fines.



WARNING

Failure to comply with these regulations may result in equipment damage, property damage, and can result in serious personal injury or death.

This manual will primarily be concerned with equipment features and use of the Load King 7500 crane.

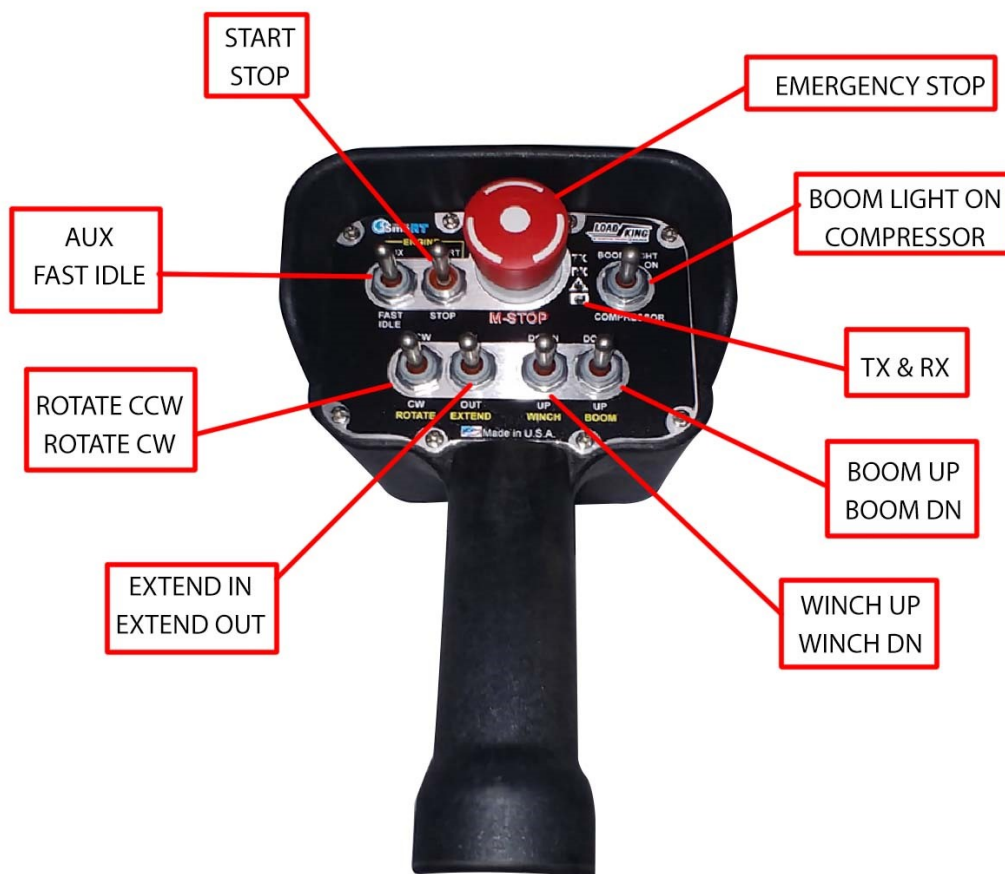
2.3 Features of the Load King 7500 Crane

2.3.1 Your Load King crane has specific features designed to enhance safety and contribute to ease of operation.

2.3.2 Remote controls and proportional control of all functions are provided. A pistol grip radio transmitter sends commands to the turret mounted receiver. The transmitter is linked only to its receiver by transmitted identity codes. The remote system complies with J1939. The overload protection system controls are programmed into the receiver.

To begin operations twist the E-Stop clockwise until it pops up. Hold the Engine Start switch for a few seconds until the TX and RX lights are flashing. This indicates the remote and receiver are linked up. The remote will time out after 15 minutes of inactivity. To restart engage the Engine Start switch again.

The pistol grip index finger lever movement corresponds to the speed at which the functions operate. To operate the Rotate, Boom Extend, Winch, or Boom Elevation first move the finger lever the desired amount for starting speed. Then select a function or functions with one of the toggle switches. The function or functions will then move at speeds according to the position of the finger lever.



Emergency Stop is activated by pushing down on the E-Stop button. Release the E-Stop by twisting clockwise.

In the event of a transmitter or receiver failure the tether cable can be connected to restore operations. Failing that the control valve is equipped with manual overrides. Press the Dump Valve and Flow Valve override plus the function desired to override and operate manually.

2.3.3 Anti-Two Block (A2B) feature prevents contact between the load block and boom tip sheave.



WARNING

The load may be suddenly dropped should contact occur resulting in serious injury personal injury or death.

The A2B is active at all times until disengaged by releasing the A2B switch. Adjust the A2B frame bracket to disengage the switch at contact. When the A2B has made contact the following functions are disabled: Hoist Up and Boom Extend. To exit the A2B active condition reverse travel by Hoisting Down or Retracting Boom.

Your A2B feature also assists in stowing the hook for travel. The A2B will stop Hoist UP as the load line is tightened to prevent stowing damage and relieve the load line of tension when stowed. Check the adjustment of the A2B frame bracket to disengage the A2B switch just before the load block meets the stow bumper.

2.3.4 Hydraulic Overload Protection (HOP) is active at all times to help prevent overload situations. The pressure transducer located on the Lift cylinder sends a pressure signal to the controller module. If the hydraulic pressure is above 3000 psi the HOP alarms the following functions are disabled: Hoist Up, Boom Extend, and Boom Down. To exit the HOP active condition Retract the boom a short distance to request HOP exit. Then do any movement that reduces the load on the boom Hoist Down (to ground), Boom Retract, or Boom Up until the alarm is silent.

If the HOP condition was entered by topping the Boom all the way up to the Lift cylinder's end of stroke (and subsequent high pressure), retract the boom a short distance to request HOP exit. The controller will allow 2 seconds of Boom Down to relieve the condition.

2.3.5 Planetary Hoist

The hoist is intended to be used only for lift loads vertically.



WARNING

Do not drag loads sideways using the Hoist or Boom functions. Undo stresses may cause component or boom failure even for light loads resulting in serious injury personal injury or death.

The hoist is planetary geared for speed and efficiency. It is equipped with a spring applied hydraulically released brake. Hoist speed is 90 FPM (feet per minute) single parted.

The Load Block BDY00236 enables the crane load line to be two parted. The end of the load line is snatched back to the boom tip instead of connected to the hook.

2.3.6 Boom Elevation

The Lift Cylinder raises and lowers the boom. It has a single counterbalance on the base end. None is required for the rod end.

3.0 Service

This unit must be regularly maintained and inspected for safe and efficient performance. See Section 3.2 for Maintenance Schedule.

3.1 Inspection

Inspect the unit daily if in daily use or periodically if in occasional use. Determine the inspection intervals according to Ch. 5 Inspection, Testing, and Maintenance Requirements of ASME B30.5

Checklist-

- Check for loose or worn parts, missing safety related parts, and damaged parts.
- Check the load line for crushed strands and broken strands.
- Inspect that all lubricated items have been lubricated.
- Check the Transmitter that all functions are operable. Check the E-Stop.
- Check the Anti-Two Block (A2B) switch by lifting the A2B frame to disengage the switch. The Hoist should not raise with the A2B system disengaged.
- Check for hydraulic leaks.
- Test the Hydraulic Overload Protection (HOP) annually. The transducer should cause the HOP to disengage at 3000 psi. The HOP stops the following Hoist Raise, Boom Extend, and Boom Lower until the system pressure is less than 3000 psi. Exiting the HOP alarm mode can be accomplished by Lowering the load to the ground, retracting the boom (most effective), or raising the boom.



WARNING

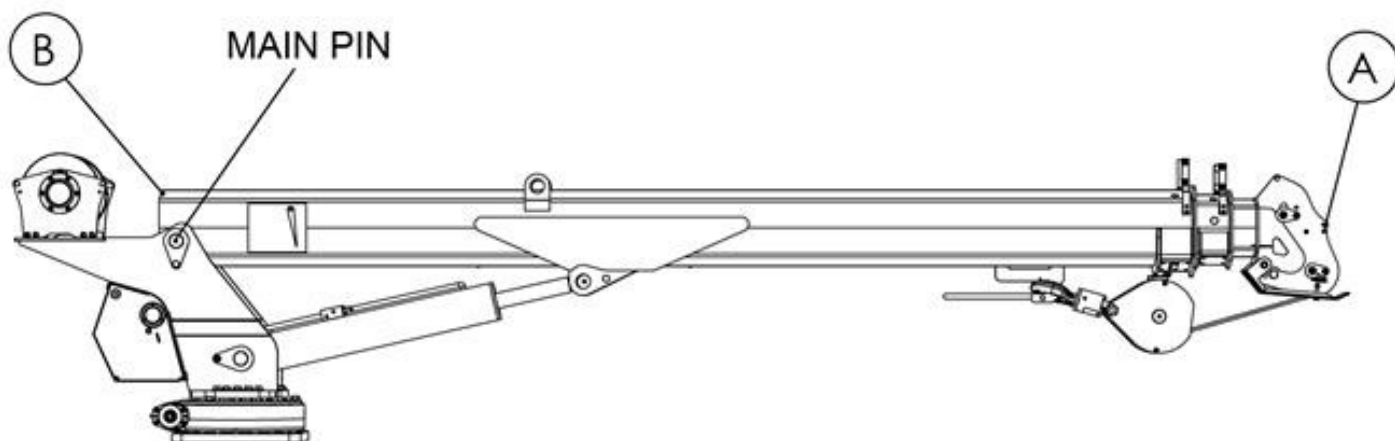
Any deficiencies found should be corrected immediately and before operation of the crane. Failure to do so could result in equipment malfunction or failure and can result in serious injury personal injury or death.

3.2 Maintenance



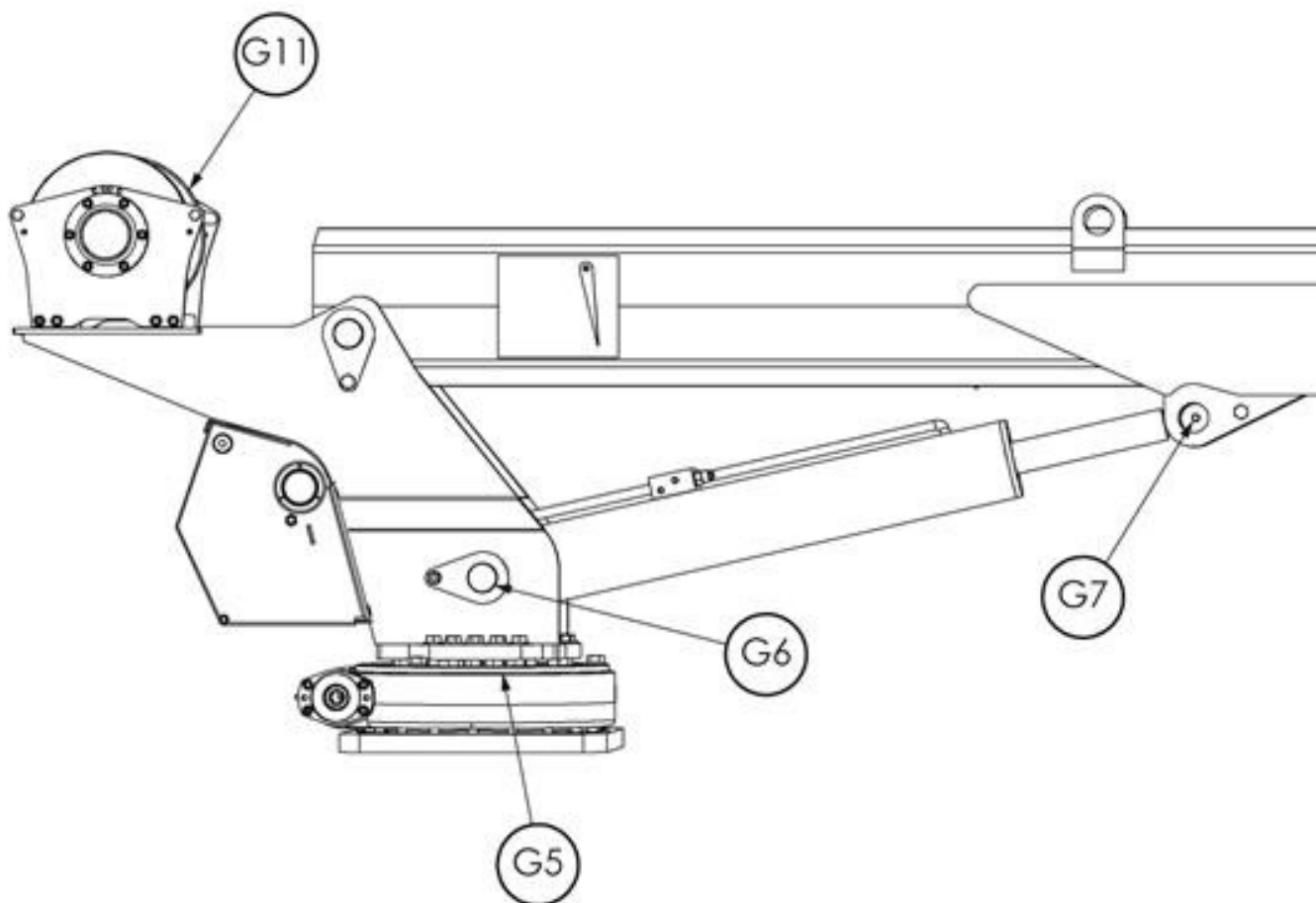
WARNING

If removal of the main pin is ever necessary secure the boom tip with a 2500# freight strap to the rear of the 1st Stage Boom as shown below. The booms can extend out or separate with the main pin removed. Failure to do so could result in equipment malfunction or failure and can result in serious injury personal injury or death.

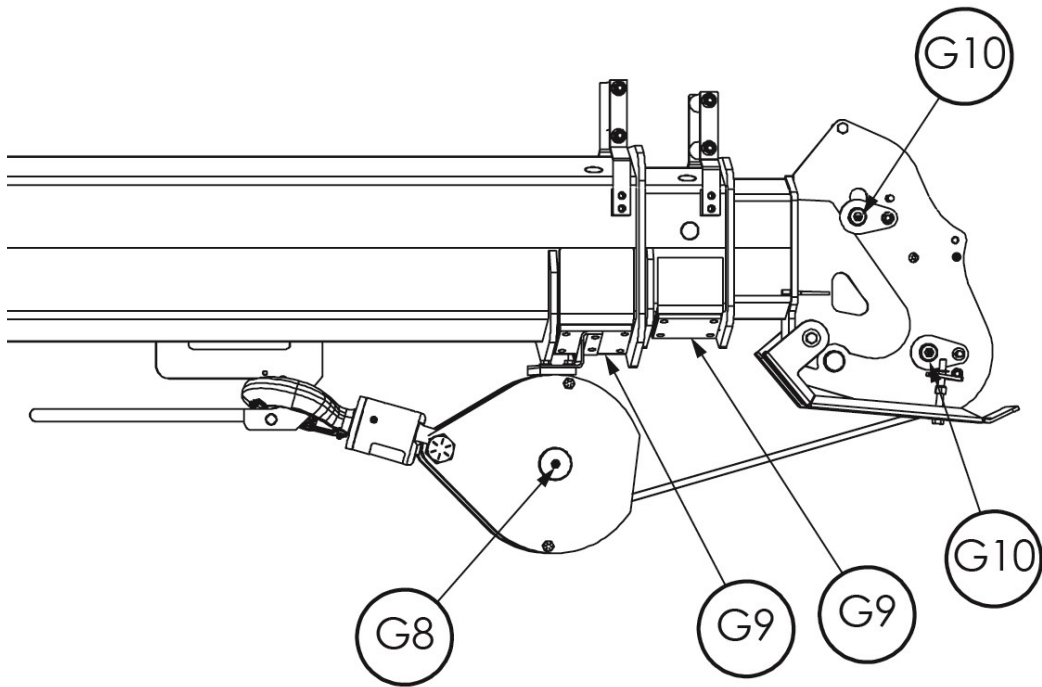


3.2.1 Lubrication

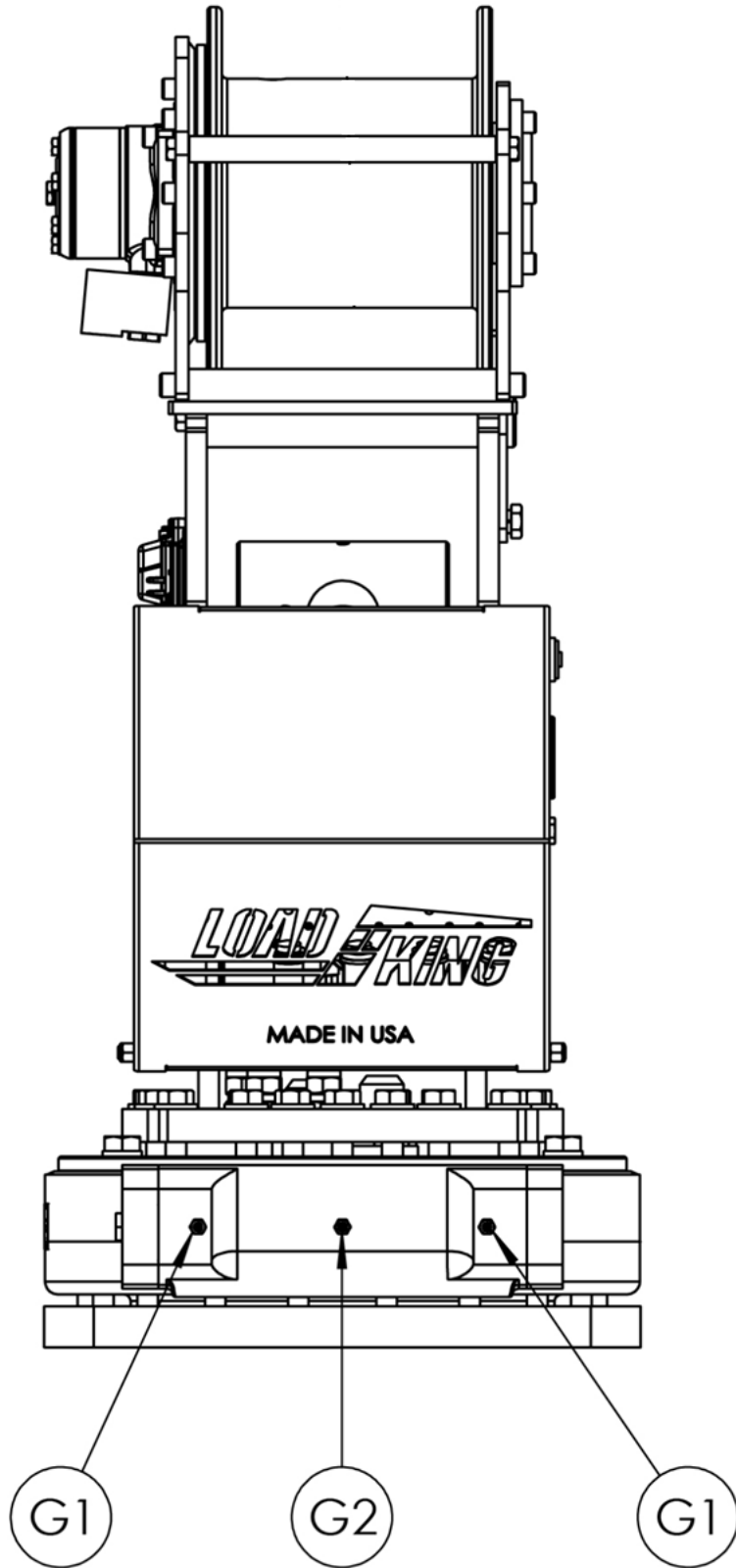
Lubricate the crane at the lube points shown in the diagram below. Use High Pressure Grease such as Lubricate Multi-Lube A or Shell Gadus S2.



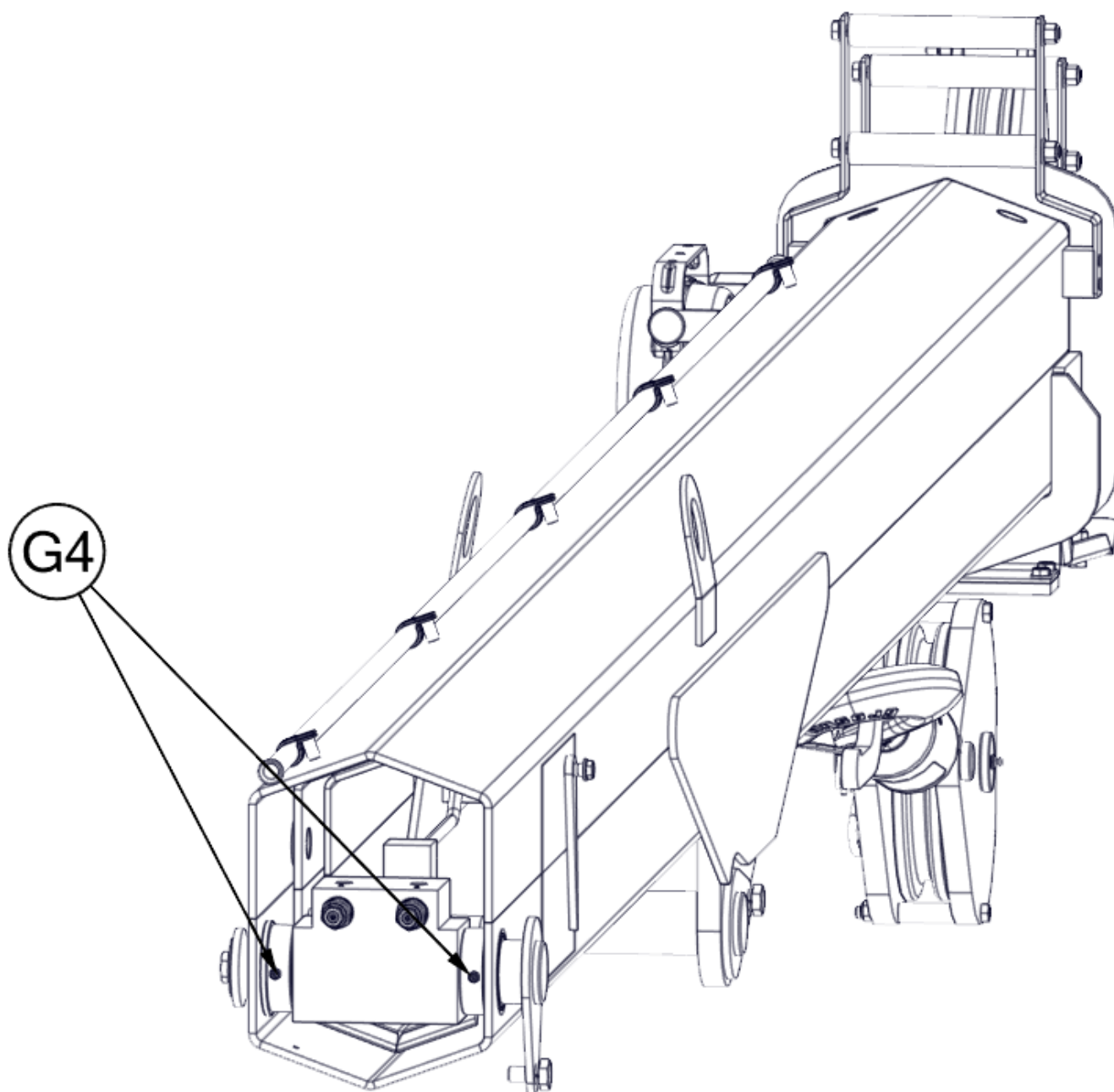
ITEM	DESCRIPTION	QTY	LUBRICANT	HOURS OF OPERATION
G1	SLEW DRIVE ROLLER BEARING	2	MULTI-LUBE A	150
G2	SLEW DRIVE WORM THREAD	1	MULTI-LUBE A	150
G3	BEARING 1ST STG BOOM	2	MULTI-LUBE A	8
G4	EDTEND CYL. ROD END	1	MULTI-LUBE A	8
G5	SLEW DRIVE BALL BEARINGS	2	MULTI-LUBE A	150
G6	LIFT CYL. BASE END	1	MULTI-LUBE A	8
G7	LIFT CYL. ROD END	1	MULTI-LUBE A	8
G8	LOAD BLOCK SHEAVE BEARING	1	MULTI-LUBE A	8
G9	BOTTOM OF 2ND & 3RD BOOMS	2	LUBE-A-BOOM	8
G10	SHEAVE BEARING	2	MULTI-LUBE A	8
G11	WIRE ROPE LOAD LINE	1	LIGHT OIL	1 MONTH



ITEM	DESCRIPTION	QTY	LUBRICANT	HOURS OF OPERATION
G1	SLEW DRIVE ROLLER BEARING	2	MULTI-LUBE A	150
G2	SLEW DRIVE WORM THREAD	1	MULTI-LUBE A	150
G3	BEARING 1ST STG BOOM	2	MULTI-LUBE A	8
G4	EDTEND CYL. ROD END	1	MULTI-LUBE A	8
G5	SLEW DRIVE BALL BEARINGS	2	MULTI-LUBE A	150
G6	LIFT CYL. BASE END	1	MULTI-LUBE A	8
G7	LIFT CYL. ROD END	1	MULTI-LUBE A	8
G8	LOAD BLOCK SHEAVE BEARING	1	MULTI-LUBE A	8
G9	BOTTOM OF 2ND & 3RD BOOMS	2	LUBE-A-BOOM	8
G10	SHEAVE BEARING	2	MULTI-LUBE A	8
G11	WIRE ROPE LOAD LINE	1	LIGHT OIL	1 MONTH

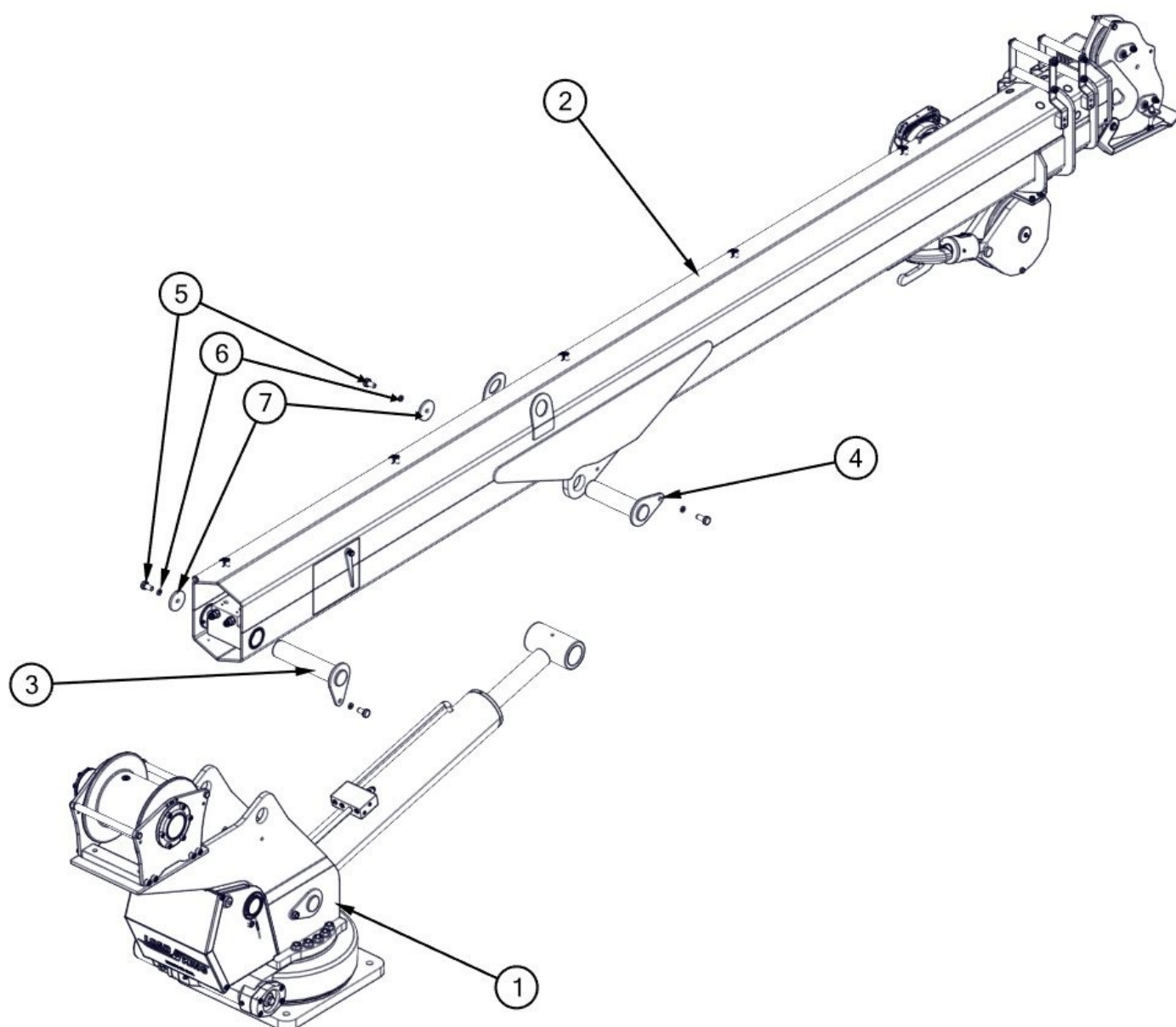


ITEM	DESCRIPTION	QTY	LUBRICANT	HOURS OF OPERATION
G1	SLEW DRIVE ROLLER BEARING	2	MULTI-LUBE A	150
G2	SLEW DRIVE WORM THREAD	1	MULTI-LUBE A	150
G3	BEARING 1ST STG BOOM	2	MULTI-LUBE A	8
G4	EDTEND CYL. ROD END	2	MULTI-LUBE A	8
G5	SLEW DRIVE BALL BEARINGS	2	MULTI-LUBE A	150
G6	LIFT CYL. BASE END	1	MULTI-LUBE A	8
G7	LIFT CYL. ROD END	1	MULTI-LUBE A	8
G8	LOAD BLOCK SHEAVE BEARING	1	MULTI-LUBE A	8
G9	BOTTOM OF 2ND & 3RD BOOMS	2	LUBE-A-BOOM	8
G10	SHEAVE BEARING	2	MULTI-LUBE A	8
G11	WIRE ROPE LOAD LINE	1	LIGHT OIL	1 MONTH



*TURRET HIDDEN FOR CLARITY

ITEM	DESCRIPTION	QTY	LUBRICANT	HOURS OF OPERATION
G1	SLEW DRIVE ROLLER BEARING	2	MULTI-LUBE A	150
G2	SLEW DRIVE WORM THREAD	1	MULTI-LUBE A	150
G3	BEARING 1ST STG BOOM	2	MULTI-LUBE A	8
G4	EDTEND CYL. ROD END	1	MULTI-LUBE A	8
G5	SLEW DRIVE BALL BEARINGS	2	MULTI-LUBE A	150
G6	LIFT CYL. BASE END	1	MULTI-LUBE A	8
G7	LIFT CYL. ROD END	1	MULTI-LUBE A	8
G8	LOAD BLOCK SHEAVE BEARING	1	MULTI-LUBE A	8
G9	BOTTOM OF 2ND & 3RD BOOMS	2	LUBE-A-BOOM	8
G10	SHEAVE BEARING	2	MULTI-LUBE A	8
G11	WIRE ROPE LOAD LINE	1	LIGHT OIL	1 MONTH

CRANE ASSEMBLY

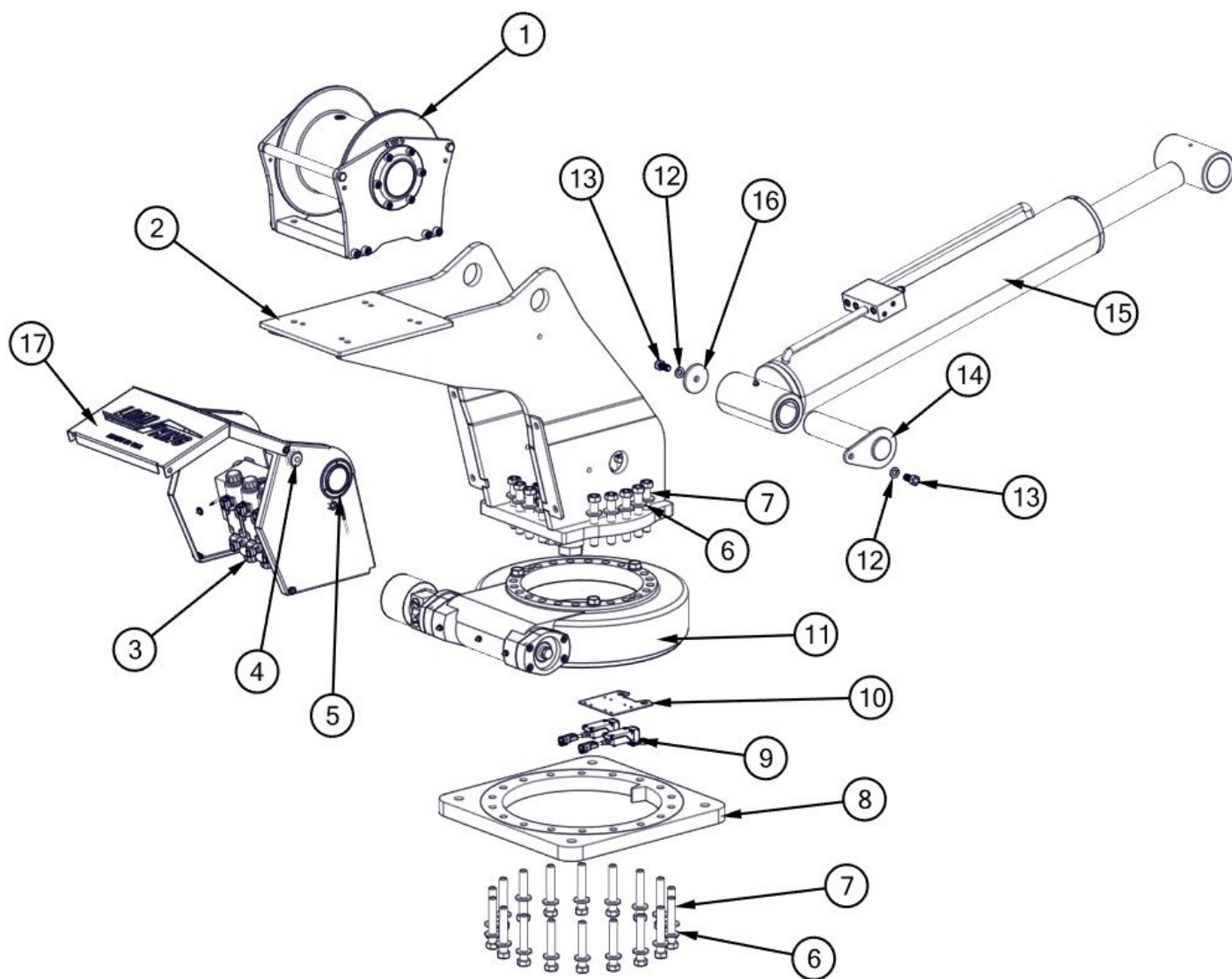
CRANE ASSEMBLY (Cont.)

ITEM NO.	PART NUMBER	DESCRIPTION	QTY
1	REF	TURRET ASSEMBLY	
2	REF	BOOM ASSEMBLY	
3	BDY00131-07	SHAFT WLDMT 2" X 9-7/16	1
4	BDY00131-03	SHAFT WLDMT 2" X 8 1/4"	1
5	BDY32211	HHFBOLT 0.5000-13x1x1-N	4
6	BDY32212	lock washer spring heavy	4
7	BDY00132-01	WASHER 2 1/2" OD X 1/2 ID	2

*BOOM OPTIONS ON PAGES 40-45

*TURRET BREAKDOWN ON PAGE 30

TURRET ASSEMBLY



- * TORQUE 159 FT-LBS
 AT ANNUAL INSPECTION, REMOVE THE CRANE
 MOUNTING BOLTS TO THE BODY AND CHECK THE
 TORQUE OF THE LOWER SLEW DRIVE BOLTS.
 REPLACE ANY BOLTS FOUND TO NOT STILL BE AT
 PROPER TORQUE WITH NEW BOLTS.

TURRET ASSEMBLY (Cont.)

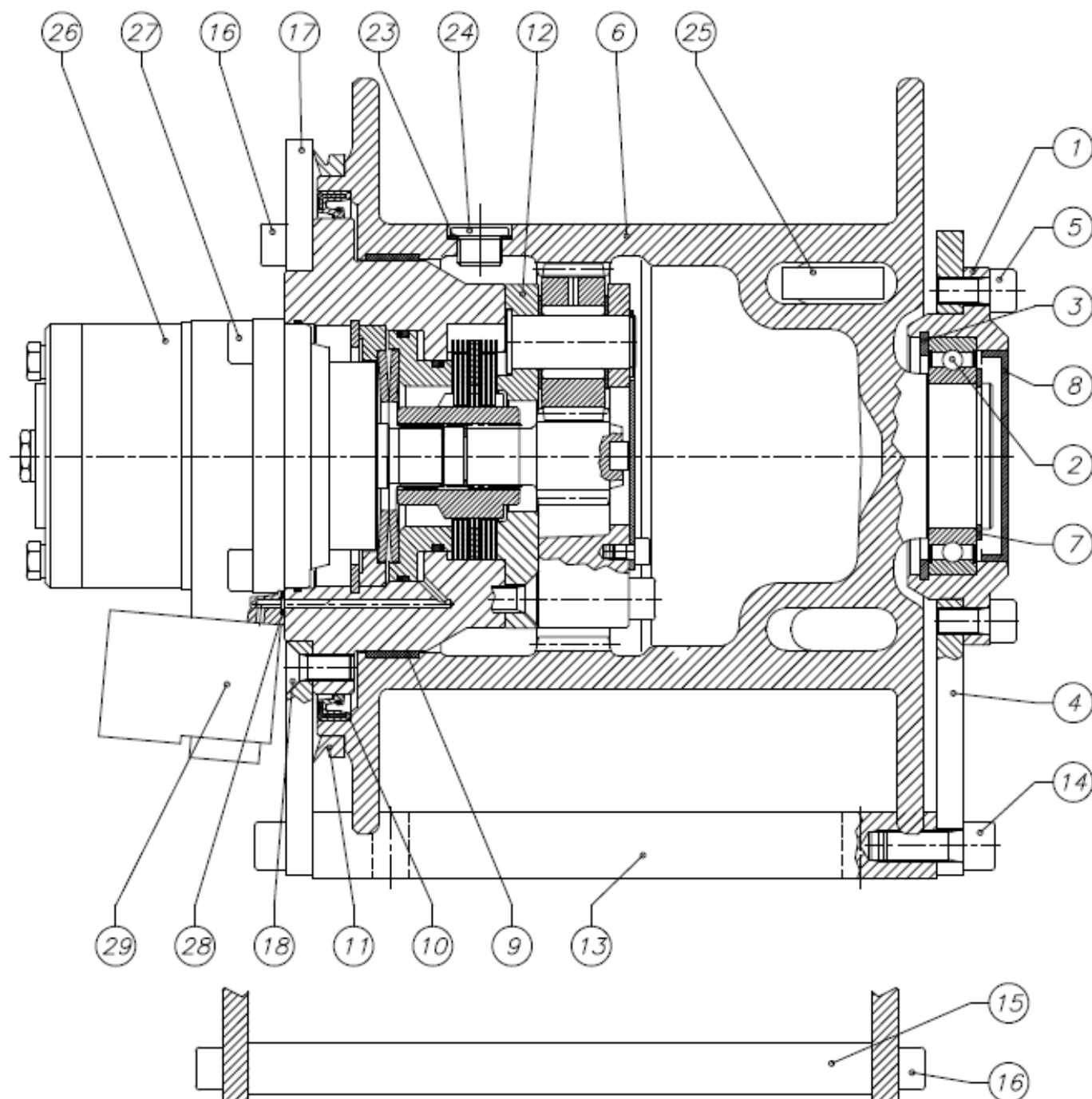
ITEM NO.	PART NUMBER	DESCRIPTION	QTY
1	BDY20022-02	HOIST PLANETARY LK 3750#	1
2	BDY00304	TURRET WLDMT. LK7500	1
3	BDY20016	CONTROL VALVE, CRANE	1
4	BDY00155-01	ALARM W/ LIGHT	1
5	BDY20003-01	HYDR. GAUGE 0-5000 PSI	1
6	FWSHR-10-YZGR8	5/8 DIA SAE FLAT WASHER YZN GR8	38
7	HCS-10-11-32-YZGR8	5/8-11 X 4 HEX CAP SCREW YZN GR8	38
8	BDY00350	BASE PLATE SLEW DRIVE	1
9	BDY00349	ROTATION STOP ASSY	1
10	BDY32122	BRACKET, LIMIT SW, LOAD KING 7500 SVCE CRANE	1
11	BDY20011	SLEW DRIVE SE14C	1
12	LWSHR-08-YZGR8	LOCK WASHER 1/2 DIA YZ GR8	2
13	HCS-08-13-08 YZGR8	HEX CAP SCREW 1/2-13 X 1 YLW ZN GR8	2
14	BDY00131-06	SHAFT WLDMT 2" X 8 11/16"	1
15	BDY00326	LIFT CYLINDER LK7500	1
16	BDY00132-01	WASHER 2 1/2" OD X 1/2 ID	1
17	BDY00152	VALVE COVER ASSY.	1

*BDY20022-02 BREAKDOWN ON PAGE 32

*BDY20016 BREAKDOWN ON PAGE 36

*BDY00152 BREAKDOWN ON PAGE 38

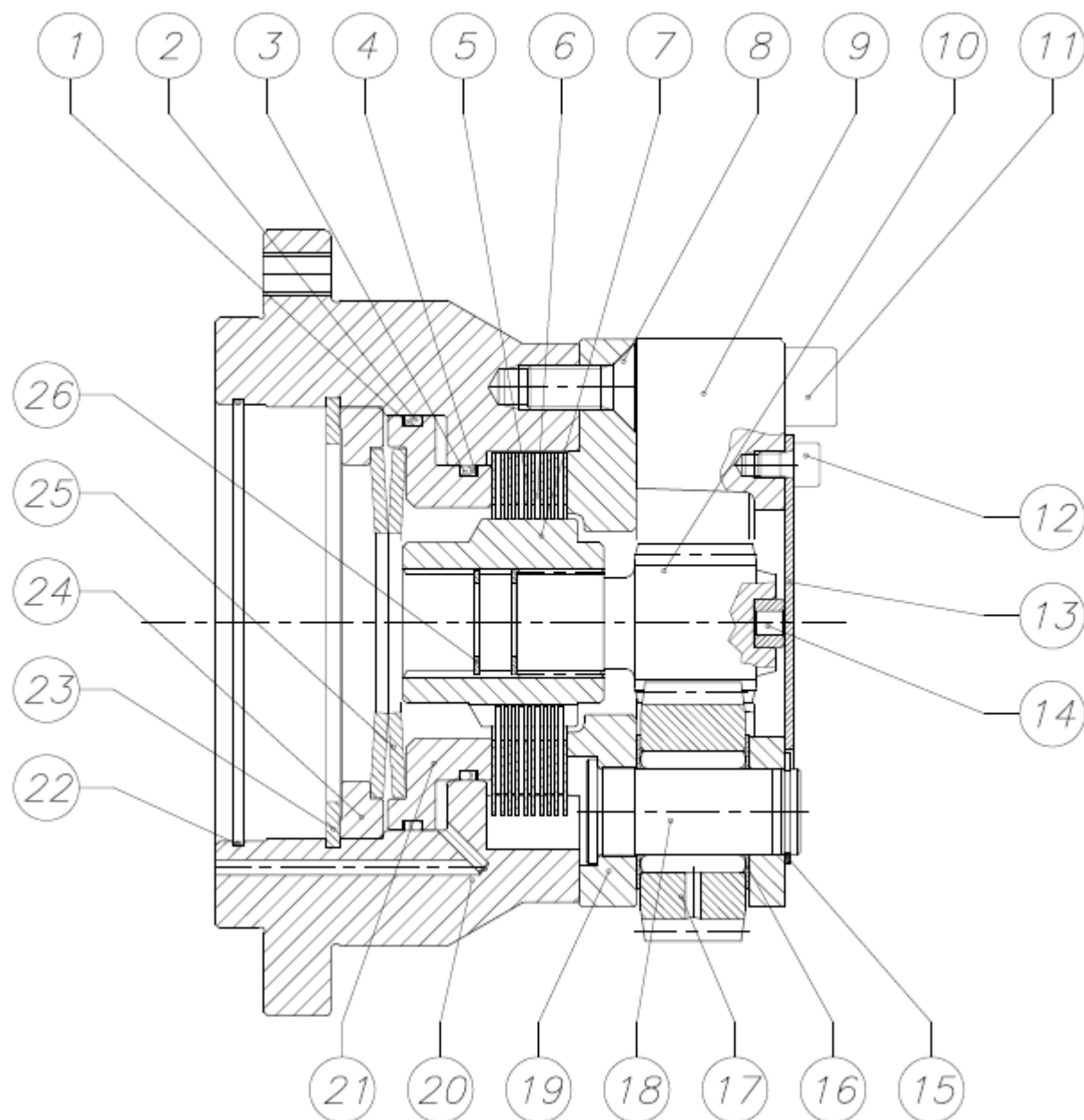
WINCH



WINCH (Cont.)

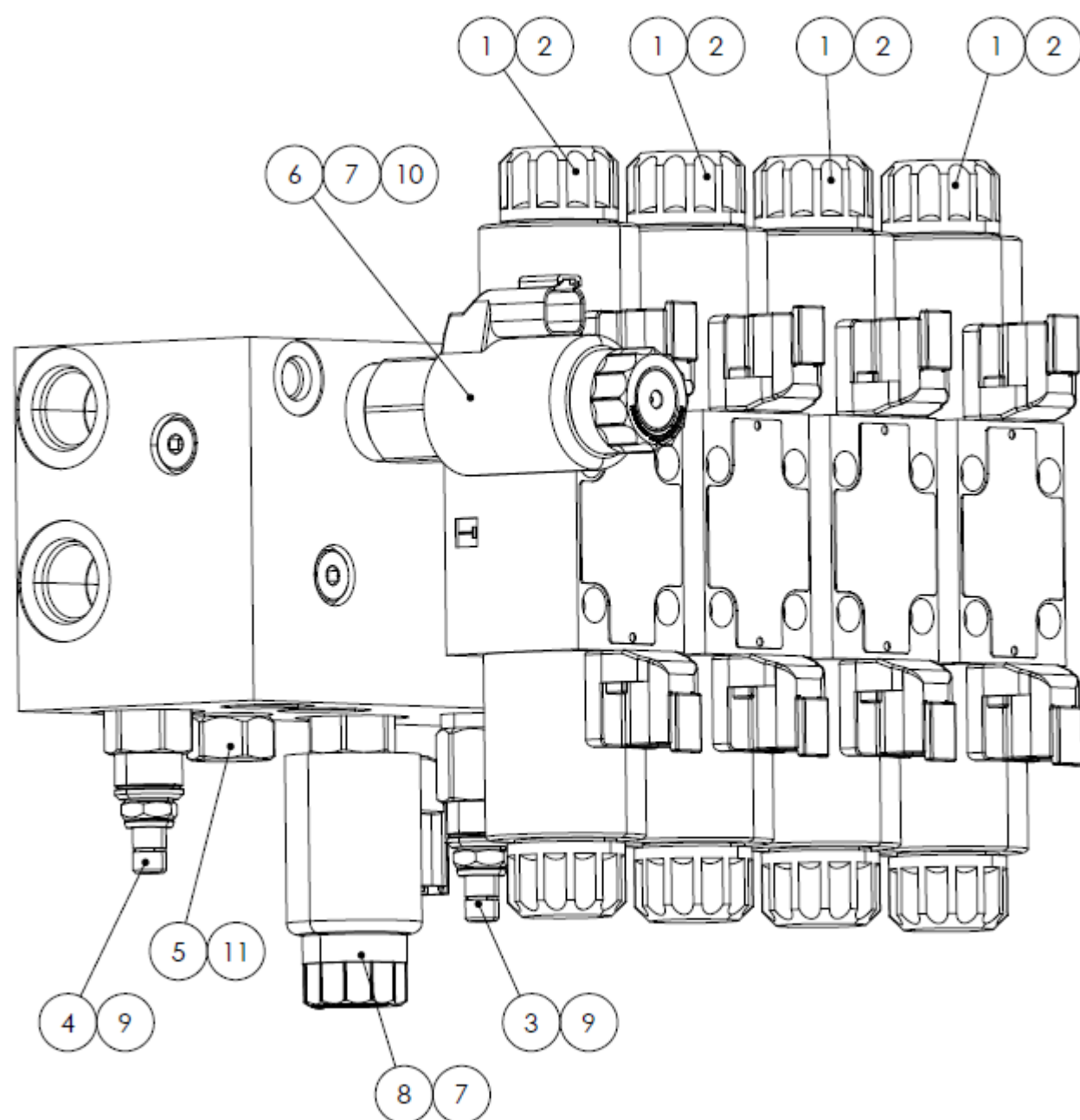
ITEM NO.	PART NUMBER	DESCRIPTION	QTY
1	BDY32158	BEARING SUPPORT RING A41	1
2	BDY32159	BALL BEARING 6011 2RS (ZKL)	1
3	BDY32160	HOLE SNAP RING Ø90	1
4	BDY32161	ROPE SIDE SUPPORT A44	1
5	BDY32162	HEX SOCKET HEAD CAP SCREW M10X20 12.9 UNI 5931	6
6	BDY32163	DRUM A44	1
7	BDY32164	SHAFT SNAP RING Ø55	1
8	BDY32165	CLOSING CAP RCA 80X10	1
9	BDY32166	GUIDE RING ATS-F 148X153X19.5 RFG	1
10	BDY32167	SEAL RING 180X200X13 BASL	1
11	BDY32168	V-RING NBR VA 199	1
12	BDY32169	BRAKE GROUP NP18 (WITH REDUCTION)	1
13	BDY32170	FIXING PLATE A41	2
14	BDY32171	HEX SOCKET HEAD CAP SCREW M12X30 12.9	8
15	BDY32172	CROSS MEMBER A41	2
16	BDY32173	HEX SOCKET HEAD CAP SCREW M10X25 12.9 UNI 5931	11
17	BDY32174	MOTOR SIDE SUPPORT WINCH NPA18-19	1
18	BDY32175	HEX SOCKET COUNTERSUNK HEAD CAP SCREW M10X25 10.9	1
23	BDY32176	SOFT COPPER WASHER 3/8" UNI 6953	2
24	BDY32177	PLUG TCEI 3/8" GAS DIN908 (STEEL)	2
25	BDY32178	WEDGE P9 DIA 6	1
26	BDY32179	MOT.DANFOSS OMRS 200 B25X22 DIN5482	1
27	BDY32180	HEX SOCKET HEAD CAP SCREW M10X25 12.9 UNI 5931	4
28	BDY32181	O-RING 2-008	1
29	BDY32182	VALVE VBO48 ATTAC.9/16"-18 UNF	1

*BDY32169 BREAKDOWN ON PAGE 34

WINCH BRAKE

WINCH BRAKE (Cont.)

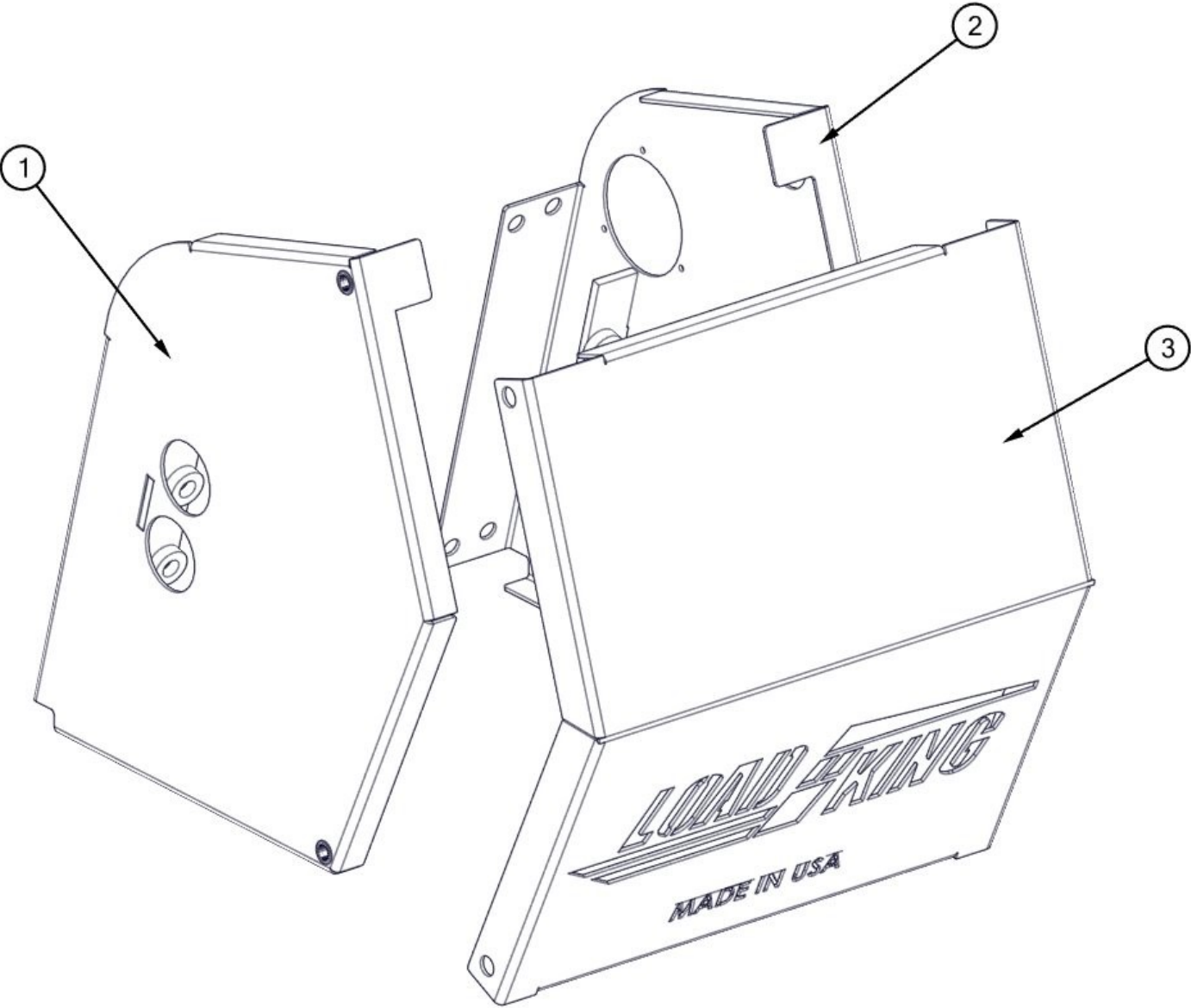
ITEM NO.	PART NUMBER	DESCRIPTION	QTY
1	BDY32183	O-RING 2-153 N 674-70	1
2	BDY32184	ANTIEXTRUSION PARBAK 8-153	1
3	BDY32185	O-RING 2-146 N 741-75	1
4	BDY32186	ANTIEXTRUSION PARBAK 8-146	1
5	BDY32187	STEEL DISK INTERNAL TEETH P6-P9-P15	9
6	BDY32188	BRONZE DISK EST.(FTB F016SP08)3"	10
7	BDY32189	BRAKE DISK GEAR NP18	1
8	BDY32190	HEX SOCKET COUNTERSUNK HEAD CAP SCREW M10X25 10.9	3
9	BDY32191	PLANETARY CARRIER A44	1
10	BDY32192	SOLAR SHAFT NP18-A44	1
11	BDY32193	HEX SOCKET HEAD CAP SCREW M12X60 12.9 UNI 5931	6
12	BDY32194	HEX SOCKET HEAD CAP SCREW TCEI M6X8 8.8 UNI 5931	3
13	BDY32195	CONTAINMENT PLAQUE NP10-NP18	1
14	BDY32196	SOLAR GEAR PAD NP18	1
15	BDY32197	SHAFT SEEGER Ø20	3
16	BDY32198	SHIM ADJUSTMENT AS 20X35X0.8	6
17	BDY32199	NEEDED PLANETARY GEAR GROUP RE210 1:5,77	3
18	BDY32200	PLANETARY CARRIER PIN RE200 YEAR VERS.2003	3
19	BDY32201	PLANETARY CARRIER A44	1
20	BDY32202	FLANGE NP18-A44	1
21	BDY32203	BRAKE BODY A44	1
22	BDY32204	O-RING 2-045	1
23	BDY32205	HOLE SNAP RING Ø100	1
24	BDY32206	SPRING CAP NP18	1
25	BDY32207	BELLEVILLE SPRING 80X41X3 DIN2093	2
26	BDY32208	CLIP RING DIA 22	2

CONTROL VALVE

CONTROL VALVE (Cont.)

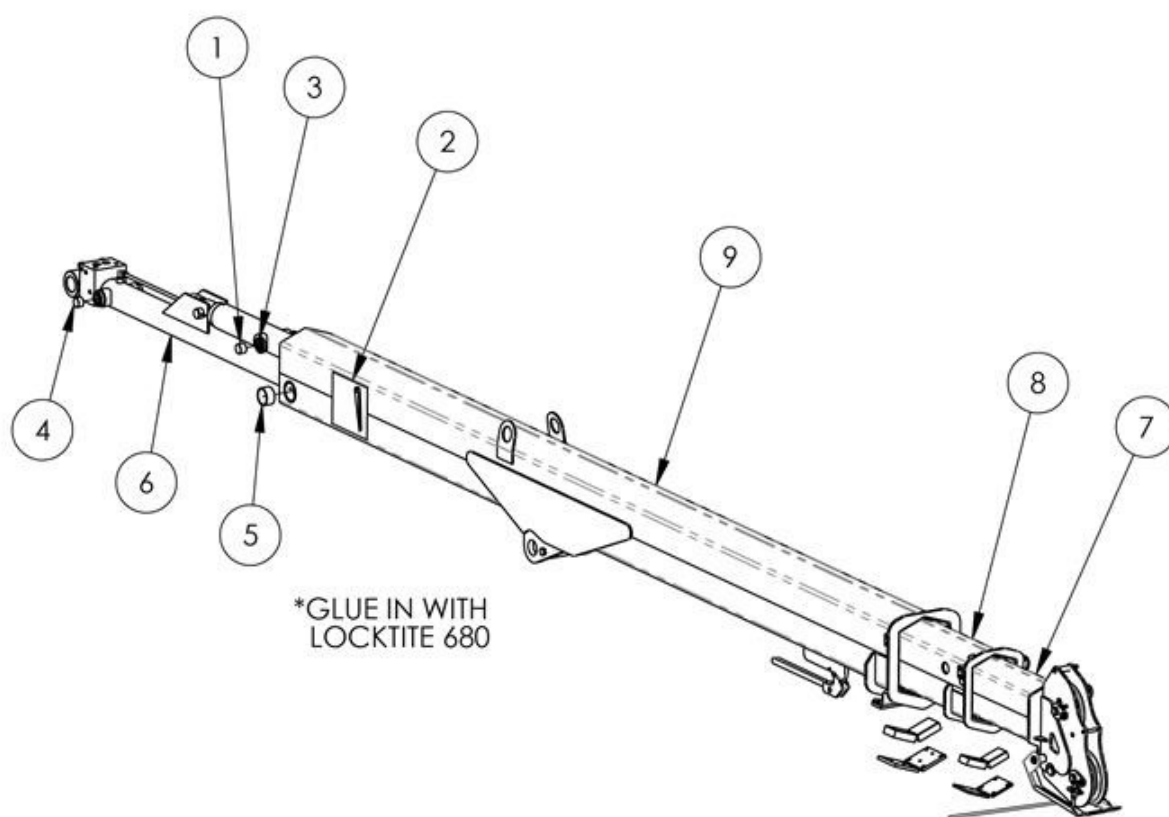
ITEM NO.	PART NUMBER	DESCRIPTION	QTY
1	BDY32116	CONTROL VALVE	4
2	BDY20061	12V COIL	REF
3	BDY32111	RELIEF VALVE 2400 PSI	1
4	BDY20055	RELIEF VALVE 3000 PSI	1
5	BDY20054	FLOW CONTROL VALVE	1
6	BDY32112	PILOT OP. THROTTLE VALVE	1
7	BDY20060	12V COIL	REF
8	BDY20052	DUMP VALVE	1
9	BDY32113	SEAL KIT	REF
10	BDY32114	SEAL KIT	REF
11	BDY32115	SEAL KIT	REF

VALVE COVER



VALVE COVER (Cont.)

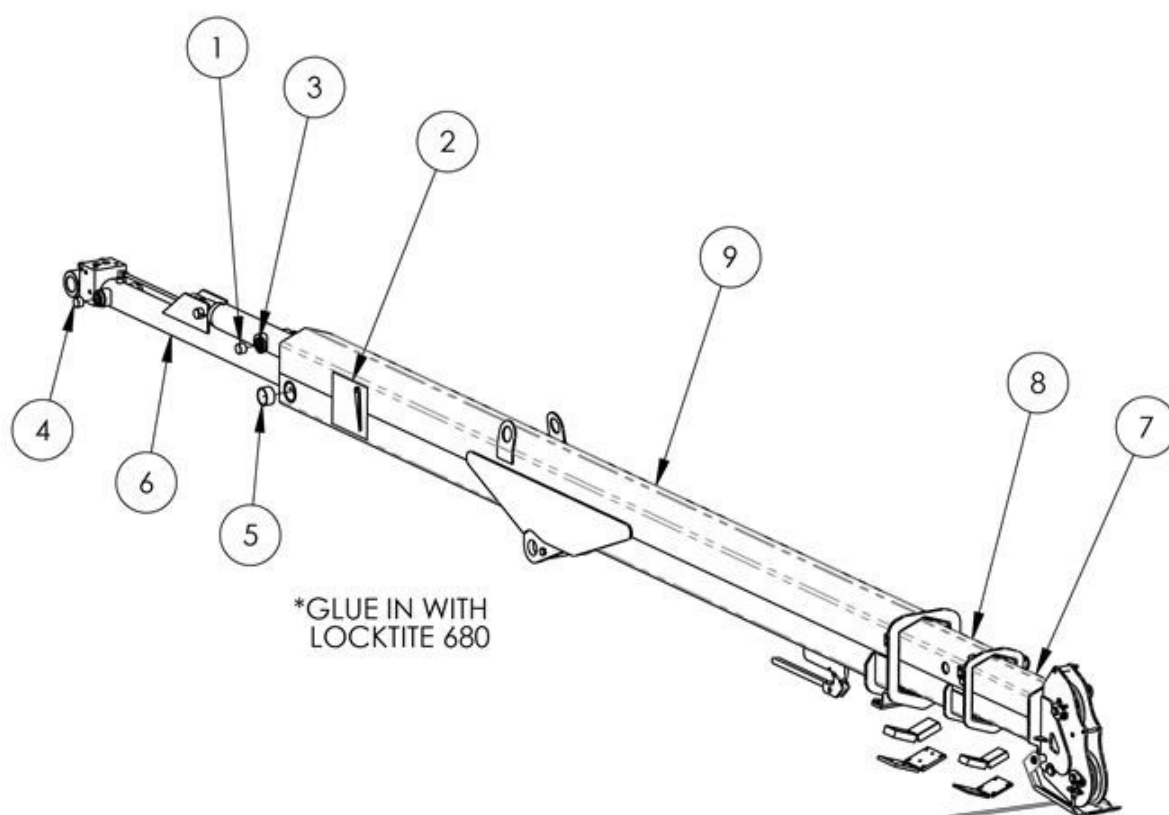
ITEM NO.	PART NUMBER	DESCRIPTION	QTY
1	BDY00152-20	VALVE COVER LFT ASSY.	1
2	BDY00152-10	VALVE COVER RT ASSY.	1
3	BDY00152-30	BACK COVER	1

BOOM ASSEMBLY—7522

BOOM ASSEMBLY—7522 (Cont.)

ITEM NO.	PART NUMBER	DESCRIPTION	QTY
1	BDY00143-04	PIN 1.25 DIA X 0.900 LG	2
2	BDY00150	BOOM ANGLE KIT	1
3	98409A240	INTERNAL RETAINING RING	4
4	BDY00143-05	PIN 1.25 DIA X 0.766 LG	2
5	BDY00142-04	GARMAX GM3438-032 2.00 ID X 2.25 OD X 2.00 LG	2
6	BDY00307	EXTENSION CYLINDER	1
7	BDY00303	3RD STG BOOM WLDMT. 7500	1
8	BDY00302	2ND STG BOOM WLDMT. 7500	1
9	BDY00301	1ST STG BOOM WLDMT. 7500	1

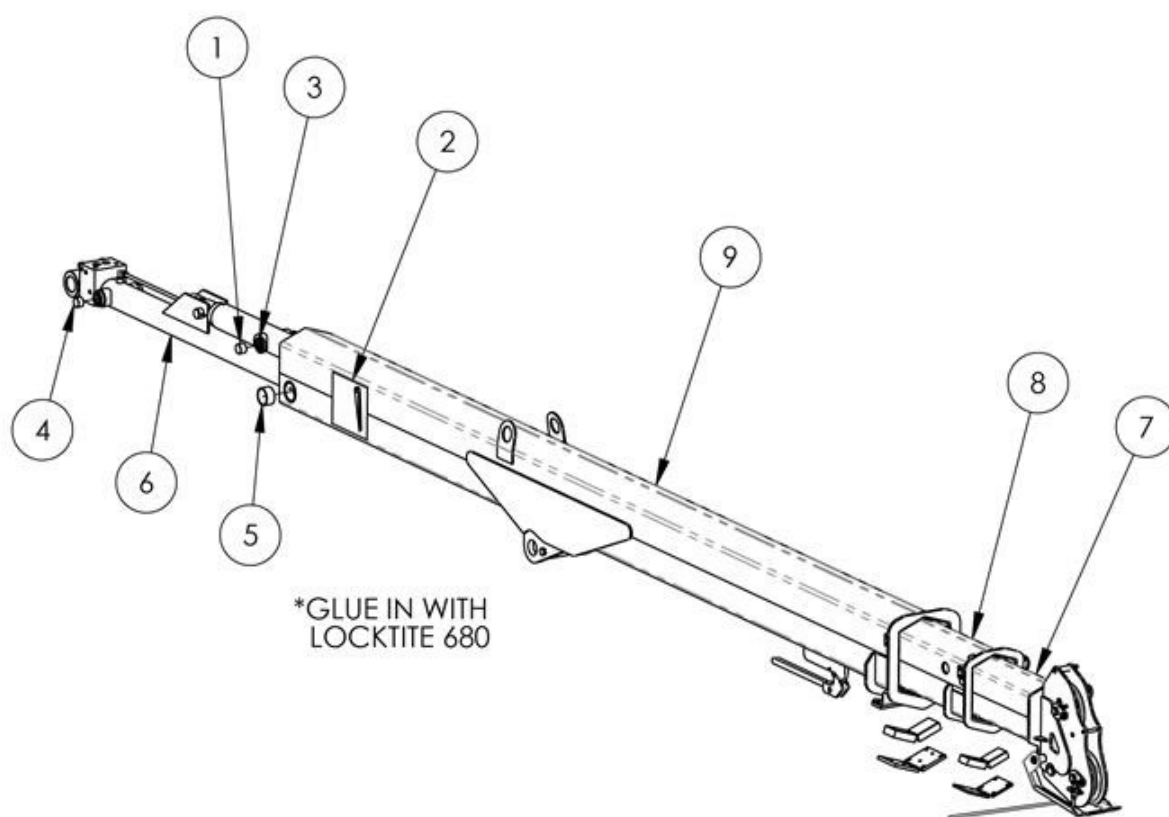
*EXTENSION CYLINDER BREAKDOWN ON PAGE 48

BOOM ASSEMBLY—7526

BOOM ASSEMBLY—7526 (Cont.)

ITEM NO.	PART NUMBER	DESCRIPTION	QTY
1	BDY00143-04	PIN 1.25 DIA X 0.900 LG	2
2	BDY00150	BOOM ANGLE KIT	1
3	98409A240	INTERNAL RETAINING RING	4
4	BDY00143-05	PIN 1.25 DIA X 0.766 LG	2
5	BDY00142-04	GARMAX GM3438-032 2.00 ID X 2.25 OD X 2.00 LG	2
6	BDY00386	EXTENSION CYLINDER	1
7	BDY00303	3RD STG BOOM WLDMT. 7500	1
8	BDY00302	2ND STG BOOM WLDMT. 7500	1
9	BDY00301	1ST STG BOOM WLDMT. 7500	1

*EXTENSION CYLINDER BREAKDOWN ON PAGE 54

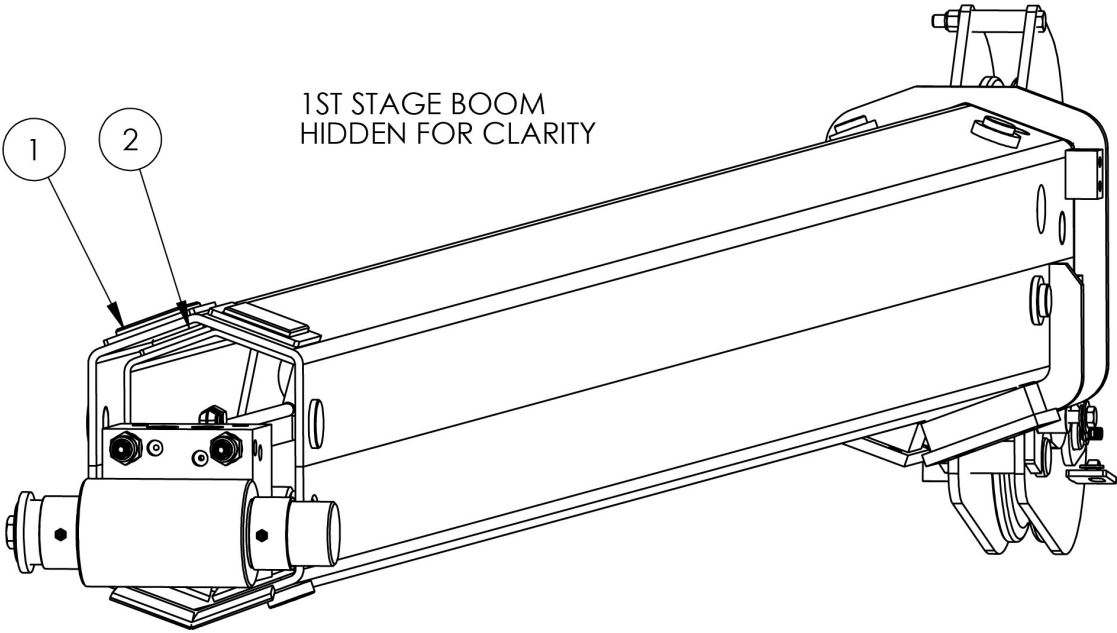
BOOM ASSEMBLY—7530

BOOM ASSEMBLY—7530 (Cont.)

ITEM NO.	PART NUMBER	DESCRIPTION	QTY
1	BDY00143-04	PIN 1.25 DIA X 0.900 LG	2
2	BDY00150	BOOM ANGLE KIT	1
3	98409A240	INTERNAL RETAINING RING	4
4	BDY00143-05	PIN 1.25 DIA X 0.766 LG	2
5	BDY00142-04	GARMAX GM3438-032 2.00 ID X 2.25 OD X 2.00 LG	2
6	BDY00107	EXTENSION CYLINDER	1
7	BDY00303	3RD STG BOOM WLDMT. 7500	1
8	BDY00302	2ND STG BOOM WLDMT. 7500	1
9	BDY00301	1ST STG BOOM WLDMT. 7500	1

*EXTENSION CYLINDER BREAKDOWN ON PAGE 54

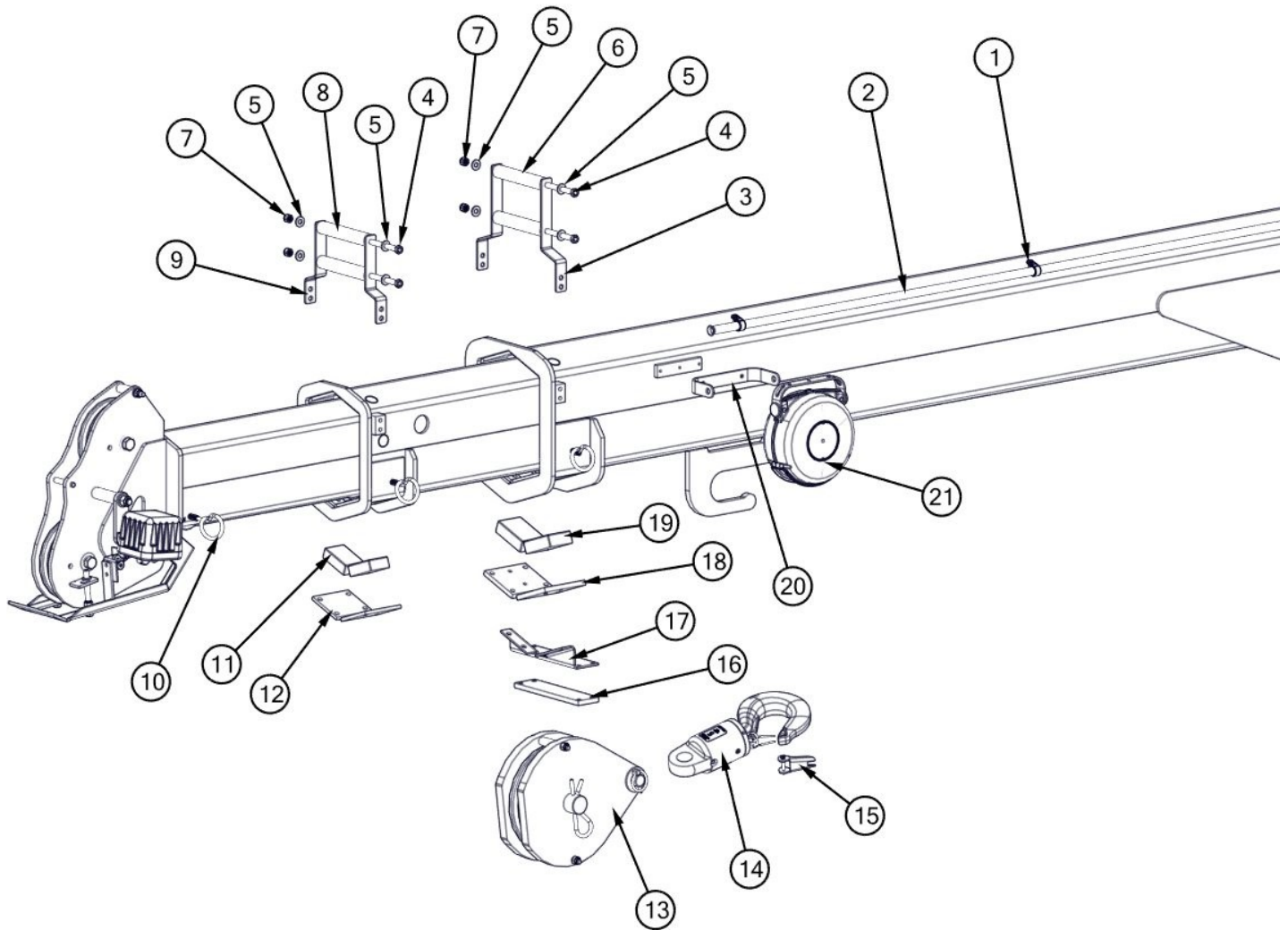
BOOM ASSEMBLY (Cont.)



BOOM ASSEMBLY (Cont.)

ITEM NO.	PART NUMBER	DESCRIPTION	QTY
1	BDY00048-08	RUB PAD 2.19 X 3.44 X .375	2
2	BDY00048-07	RUB PAD 1.69 X 2.94 X .375	2

BOOM ASSEMBLY (Cont.)

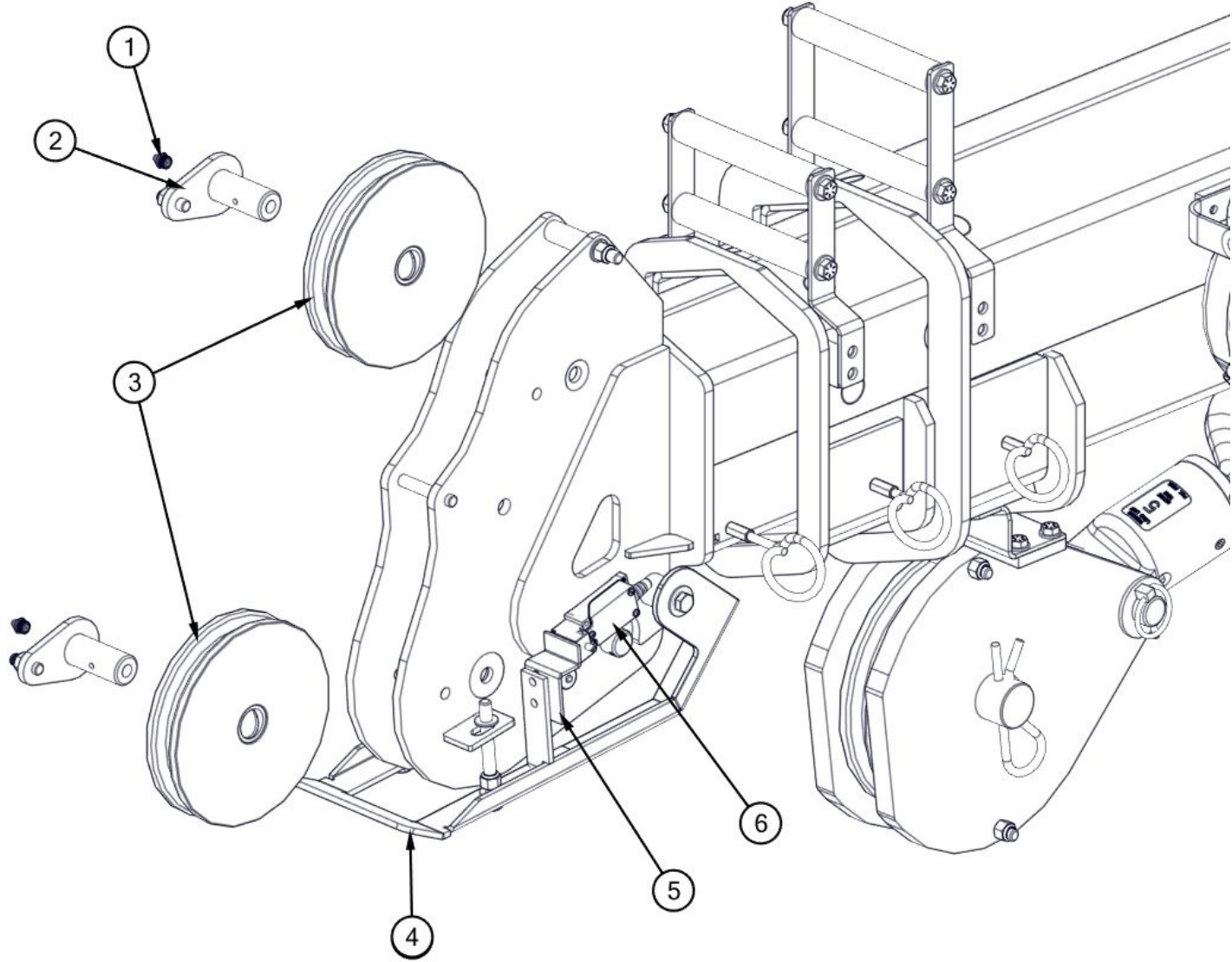


BOOM ASSEMBLY (Cont.)

ITEM NO.	PART NUMBER	DESCRIPTION	QTY
1	BDY32069	LOOP CLAMP, VIB DAMPING, ZN PLD STEEL, 5/8" ID, 1 5/8" LG	5
2	BDY32033	STEEL TUBING, SMLS, 5/8" OD, 0.049" WALL THKNS, 128" LG	1
3	BDY00146-01	ROPE GUIDE BRACKET, 1ST STG	2
4	HCS-06-16-56-YZGR8	3/8-16 X 7 HEX CAP SCREW YLW ZN GR8	4
5	FWSHR-06-YZGR8	FLAT WASHER 3/8" SAE YLW ZN GR8	8
6	BDY00145-05	ROLLER, ROPE GUIDE	2
7	NNUT-06-16-YZGR8	3/8-16 NYLOCK NUT GR8 YLW ZN	4
8	BDY00145-04	ROLLER, ROPE GUIDE	2
9	BDY00145-01	ROPE GUIDE BRACKET, 2ND STG	2
10	BDY20050	ROUTING RING 1/4-20, 1-1/4" EYE DIA	3
11	BDY00048-04	RUB PAD 1.94 x 2.94 x 0.94	2
12	BDY00108-03	PAD KEEPER LK7500	2
13	BDY00236	SNATCH BLOCK 5.25 TON	1
14	BDY32209	5 TON SWIVEL	1
15	BDY32210	SWIVEL HOOK LATCH	1
16	BDY00239-02	RUB PAD, BLOCK BUMPER	1
17	BDY00239-01	FRAME, BLOCK BUMPER	1
18	BDY00108-04	PAD KEEPER LK 7500	2
19	BDY00048-03	RUB PAD 2.44 x 3.44 x 1.00	2
20	BDY32094	MOUNTING BRACKET, CABLE REEL, SERVICE CRANE	1
21	BDY20026	CABLE REEL	1

*BDY00236 BREAKDOWN ON PAGE 56

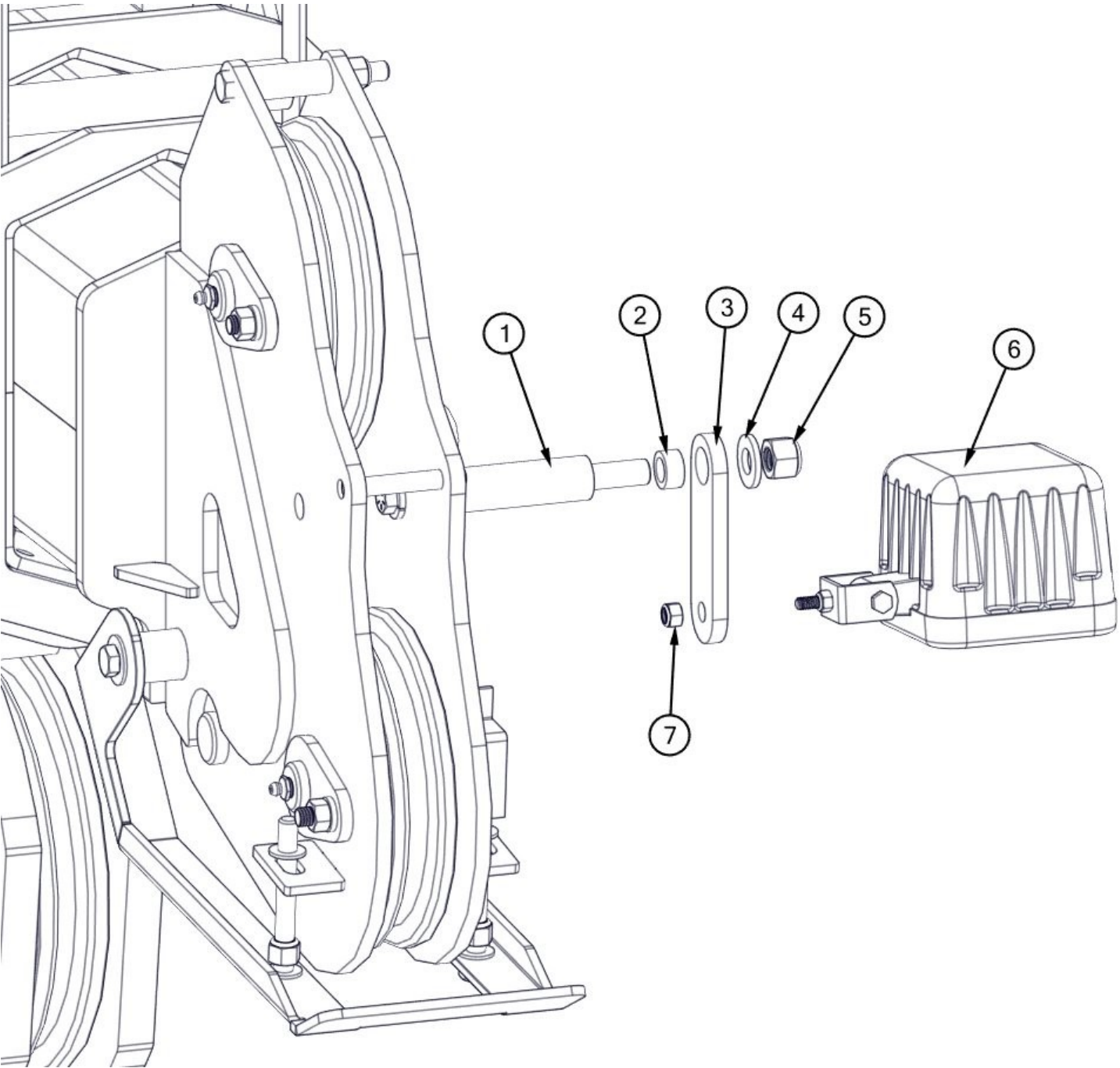
BOOM ASSEMBLY (Cont.)



BOOM ASSEMBLY (Cont.)

ITEM NO.	PART NUMBER	DESCRIPTION	QTY
1	1095K650	ZERK, 1/8-27 NPT	2
2	BDY00131-05	SHAFT WLDMT 2" X 12-3/16	2
3	BDY00328	SHEAVE ASSEMBLY, 7/16" ROPE DIA, 6.75" OD, 1-11/32" WD	2
4	BDY00344	ANTI-TWO BLOCK WLDMT.	1
5	BDY00144-03	A2B TARGET	1
6	BDY20019	SAFETY LIMIT SWITCH	1

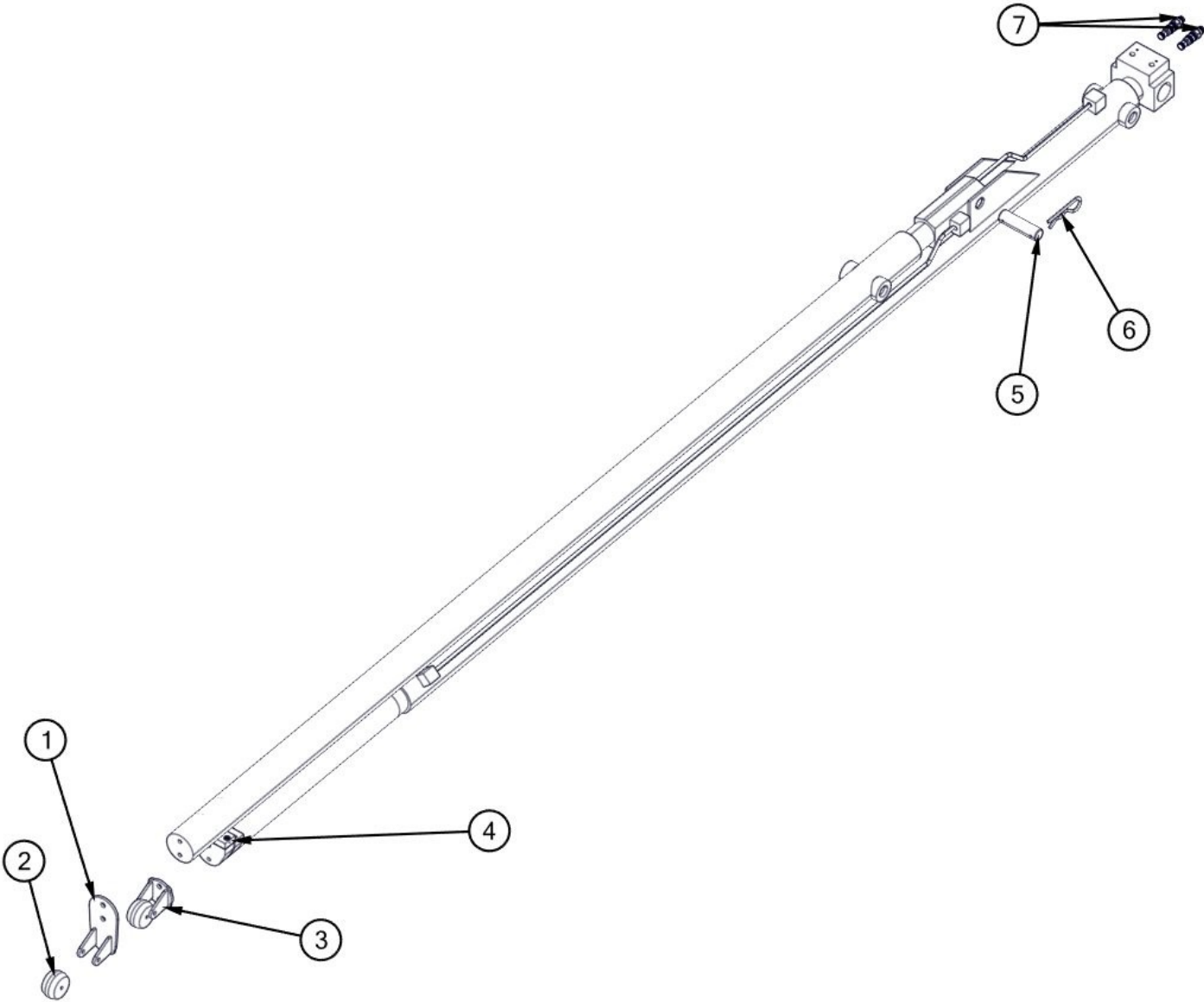
BOOM TIP LIGHT



BOOM TIP LIGHT (Cont.)

ITEM NO.	PART NUMBER	DESCRIPTION	QTY
1	BDY00147-01	LIGHTING STANDOFF	1
2	BDY20001-08	SLEEVE BEARING 1/2 ID 3/4 OD 3/8 W	1
3	BDY00147-02	LIGHT MTG. ARM	1
4	FWSHR-08-YZGR8	FLAT WASHER 1/2 DIA YZ GR8	1
5	1003571	NYLOCK NUT 1/2-13 GR 5 ZN	1
6	BDY20123	WORK LIGHT, LED, 2520 lm, 3.75in SQ, 10 - 30VDC	1
7	NNUT-04-20-YZGR8	1/4-20 NYLOCK NUT YZ GR8	1

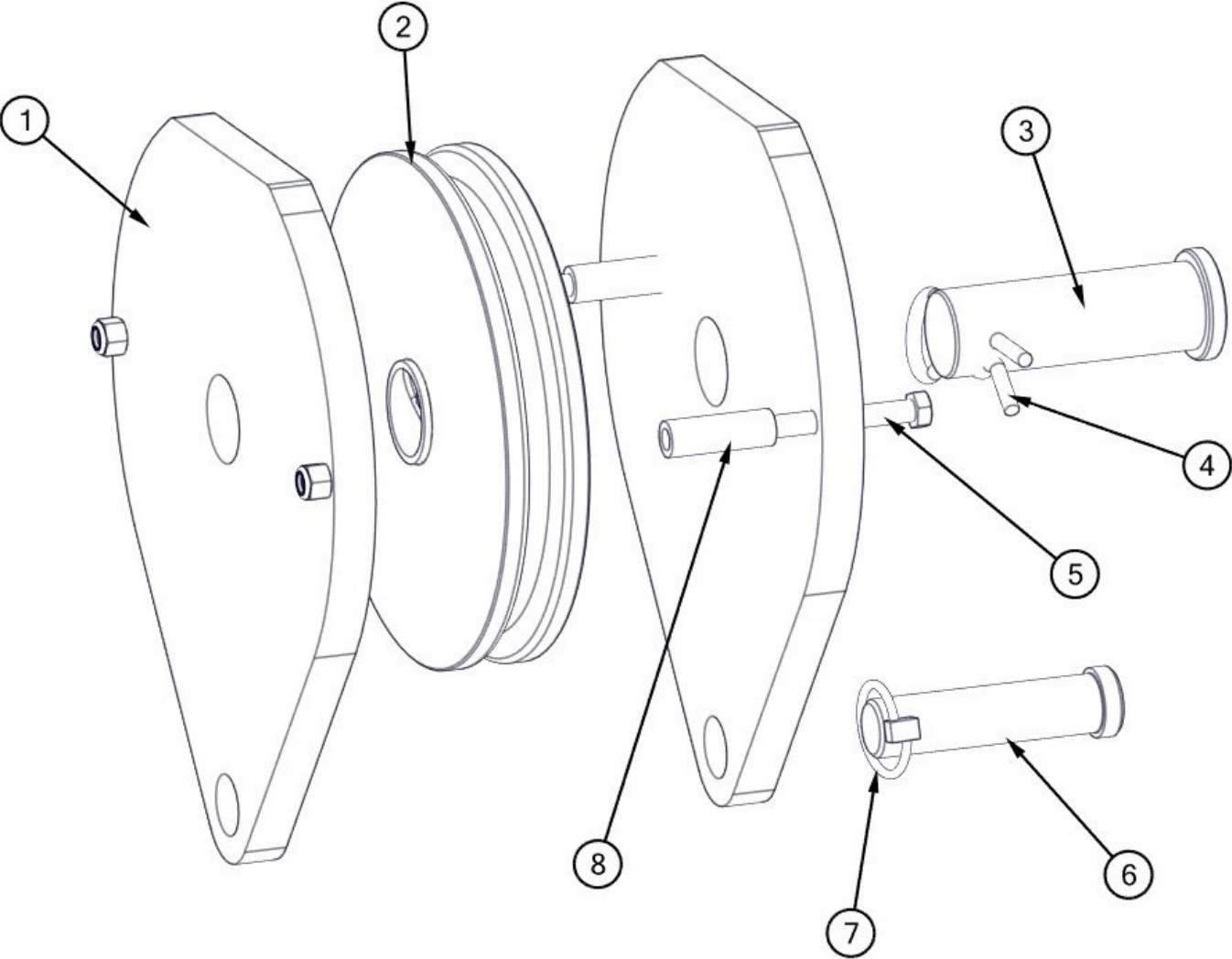
EXTENSION CYLINDER



EXTENSION CYLINDER (Cont.)

ITEM NO.	PART NUMBER	DESCRIPTION	QTY
1	1027506	WELDMENT,UPPER ROLLER	1
2	BDY00382	WHEEL, EXTEND CYLINDER	2
3	1027502	WELDMENT, LOWER ROLLER	1
4	1027499	WEAR PAD, SADDLE	1
5	BDY00107-05	CYLINDER PIN	1
6	BDY20002-18	HAIR PIN 1-1/8" - 1-1/2" DIA X 1/4" WIRE DIA	2

SNATCH BLOCK



SNATCH BLOCK (Cont.)

ITEM NO.	PART NUMBER	DESCRIPTION	QTY
1	BDY00237-01	SNATCH BLOCK SIDE PLATE	2
2	BDY00127	SHEAVE ASSEMBLY, 7/16" ROPE DIA, 8.7" OD, 1-1/2" WD	1
3	BDY00238-01	MOD. CLEVIS PIN 1.50 DIA X 3 LG	1
4	BDY20002-18	HAIR PIN 1-1/8" - 1-1/2" DIA X 1/4" WIRE DIA	1
5	HCS-06-16-32-YZGR8	3/8-16 X 4 HEX CAP SCREW YLW ZN GR8	2
6	BDY32117	CLEVIS PIN, 1" DIA, 3.68" USABLE LT, ZN PLD, 1004-1045 CS	1
7	BDY20025-650	LINCH PIN 3/16 PIN X 1-1/8" OD	1
8	BDY32118	SPACER, 5/8" OD X 3/8" ID X 1 7/8" L, CS, ZN PLD	2

LOAD KING 7500 SERVICE CRANE LABELS

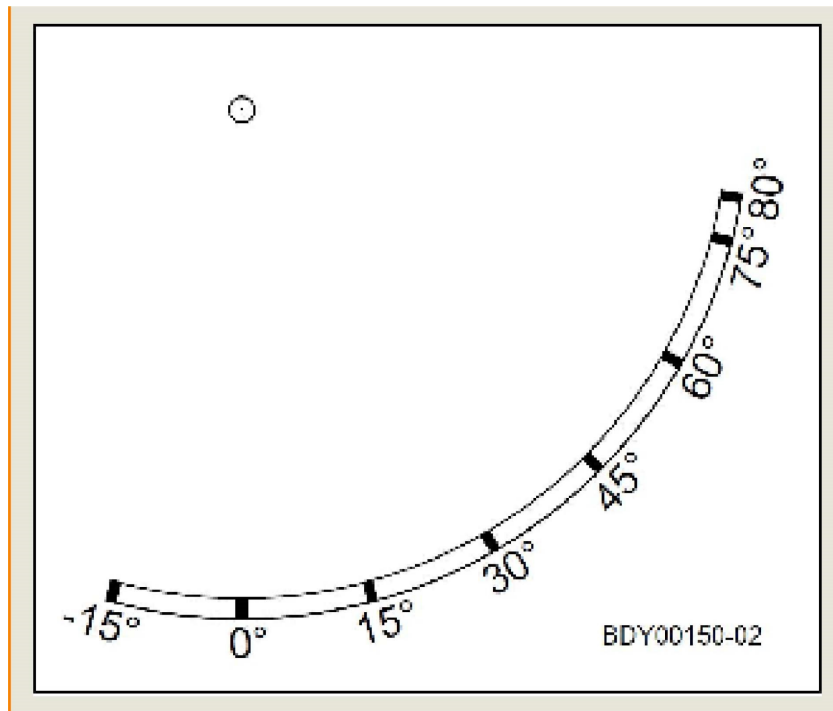
Stinger 7522 Service Crane



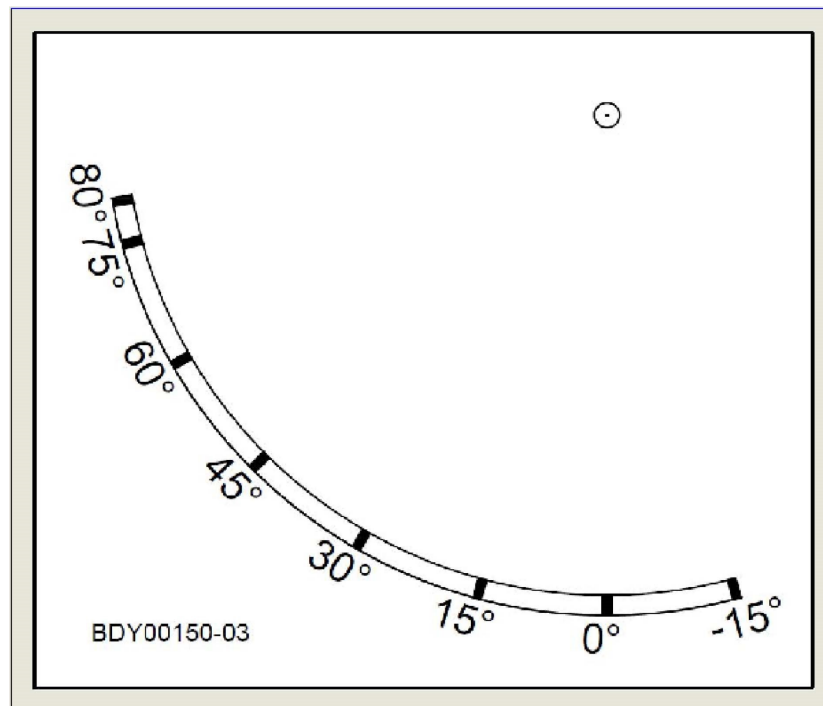
BDY32006-14
W 7.0 X H 2.30
(2 EACH)

The image shows a large, bold, black, italicized sans-serif number '7522' centered within a white rectangular frame. The number is the primary focus of the label.

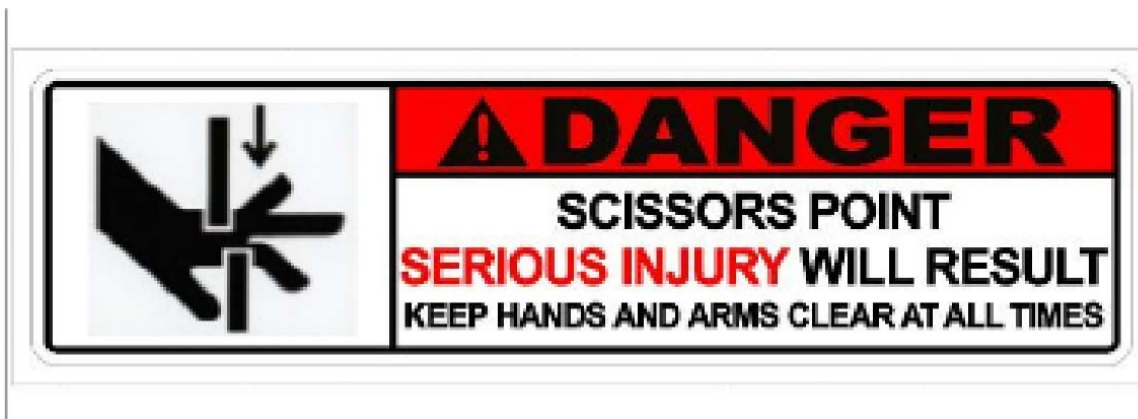
BDY32027-01
W 12 X H 3.70
(2 EACH)



BDY00150-02
W 8.35 X H 7.10
(1 EACH)



BDY00150-03
W 8.35 X H 7.10
(1 EACH)



BDY32006-05
W 8.70 X H 2.45
(2 EACH)



BDY32006-10
W 1.5 X H 1 (PER ARROW)
(1 EACH)



BDY32006-12
W 3.20 X H 1.55
(2 EACH)



BDY32006-06
W 3.20 X H 1.55
(2 EACH)



BDY32006-11
W 2.50 X H 1.80
(1 EACH)



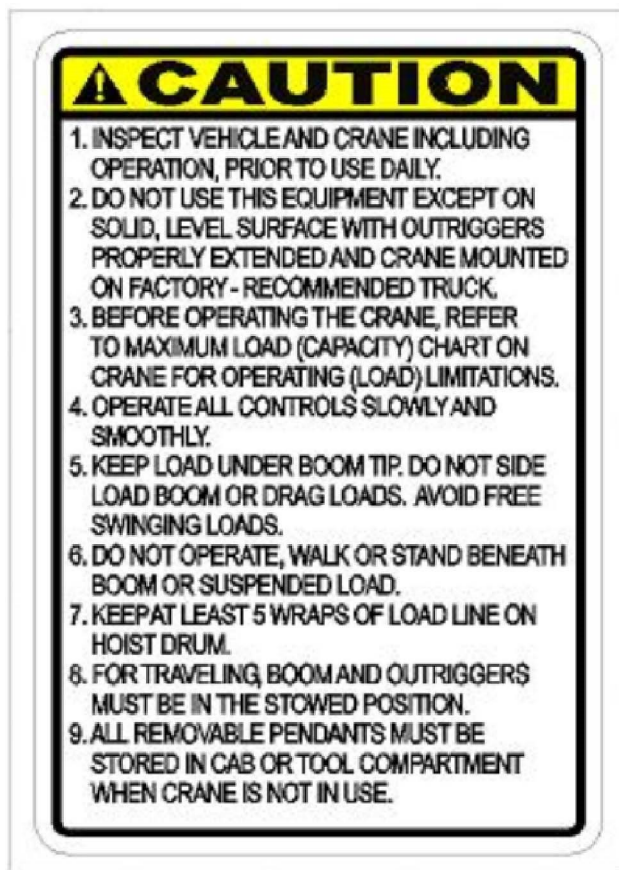
BDY32006-08
W 2.95 X H 4.0
(2 EACH)



BDY32006-09
W 4 X H 2.5
(2 EACH)



BDY32006-07
W 4.20 X H 1.45
(2 EACH)



BDY32006-13
W 3.20 X H 4.70
1 EACH



BDY32006-02
W 1.70 X H 1.35
(2 EACH)

LOAD KING 7500 SERVICE CRANE LABELS

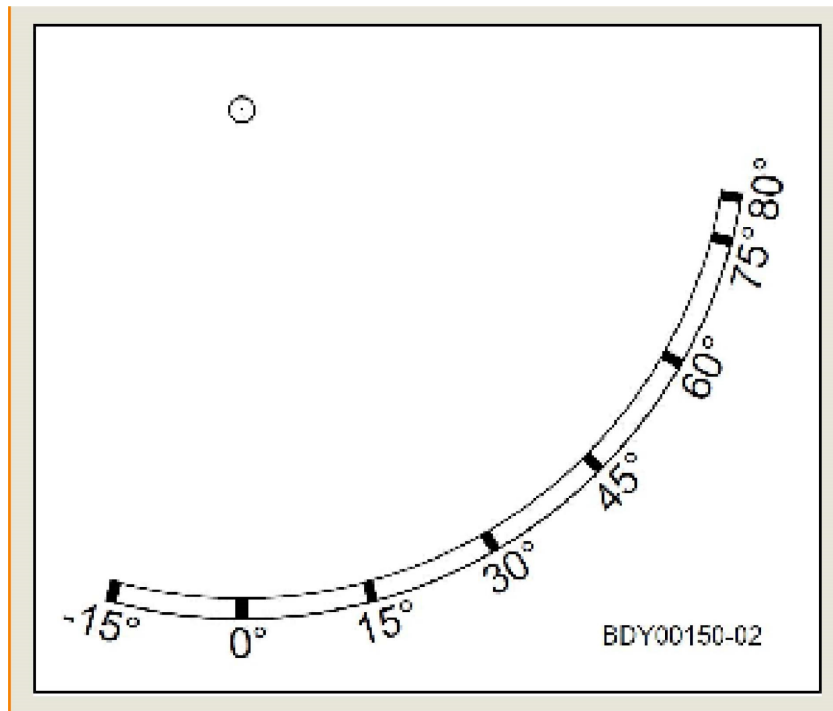
Stinger 7526 Service Crane



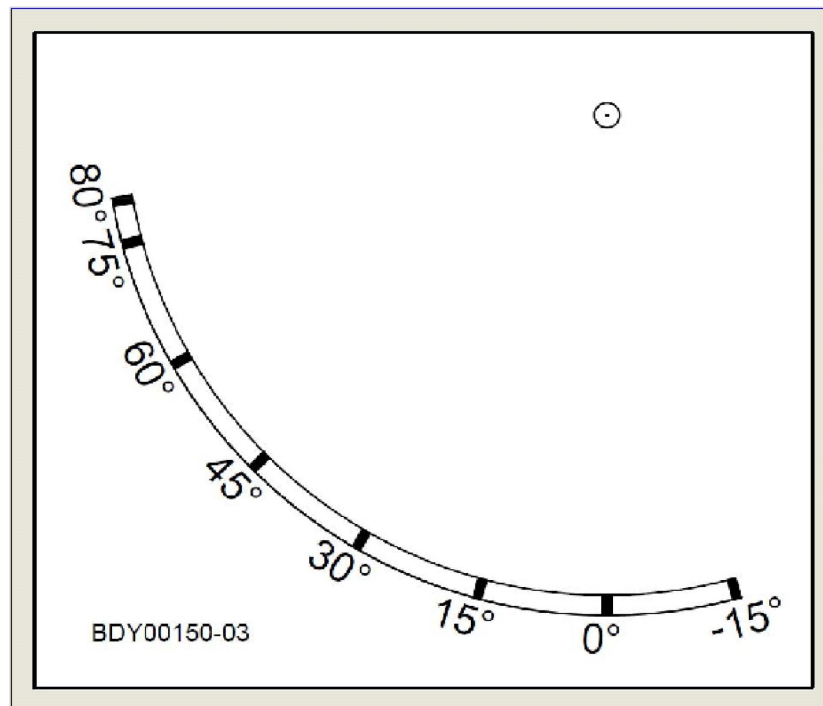
BDY32006-14
W 7.0 X H 2.30
(2 EACH)

7526

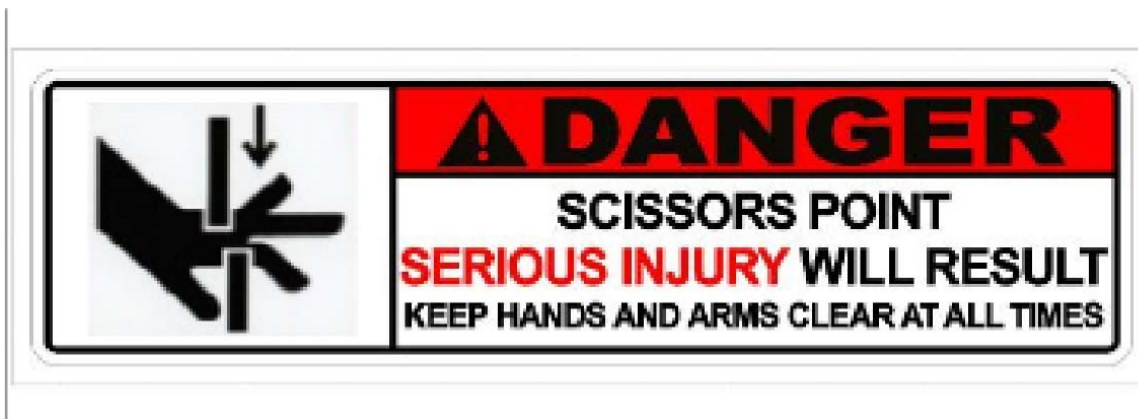
BDY32028-01
W 12 X H 3.70
(2 EACH)



BDY00150-02
W 8.35 X H 7.10
(1 EACH)



BDY00150-03
W 8.35 X H 7.10
(1 EACH)



BDY32006-05
W 8.70 X H 2.45
(2 EACH)



BDY32006-10
W 1.5 X H 1 (PER ARROW)
(1 EACH)



BDY32006-12
W 3.20 X H 1.55
(2 EACH)



BDY32006-06
W 3.20 X H 1.55
(2 EACH)



BDY32006-11
W 2.50 X H 1.80
(1 EACH)



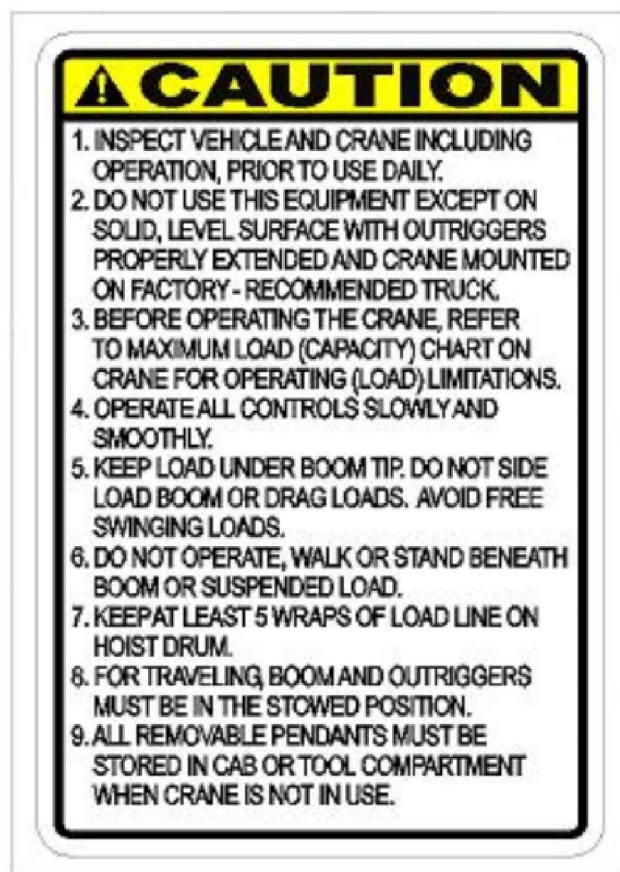
BDY32006-08
W 2.95 X H 4.0
(2 EACH)



BDY32006-09
W 4 X H 2.5
(2 EACH)



BDY32006-07
W 4.20 X H 1.45
(2 EACH)



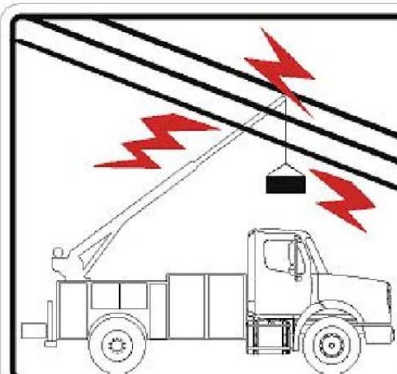
BDY32006-13
W 3.20 X H 4.70
1 EACH



BDY32006-02
W 1.70 X H 1.35
(2 EACH)

STINGER

BDY32006-04
W 20 X H 4.75
(2 EACH)



! DANGER

ELECTROCUTION HAZARD

DEATH OR SERIOUS INJURY

WILL RESULT FROM BOOM, LINE, OR LOAD CONTACTING ELECTRIC LINES.
DO NOT USE CRANE WITHIN 10 FEET OF ELECTRIC LINES CARRYING UP
TO 50,000 VOLTS. ONE FOOT ADDITIONAL CLEARANCE IS REQUIRED FOR
EVERY ADDITIONAL 30,000 VOLTS OR LESS.

BDY32006-01

BDY32006-01
W 12.45" X H 3.70
(2 EACH)

LOAD KING 7500 SERVICE CRANE LABELS

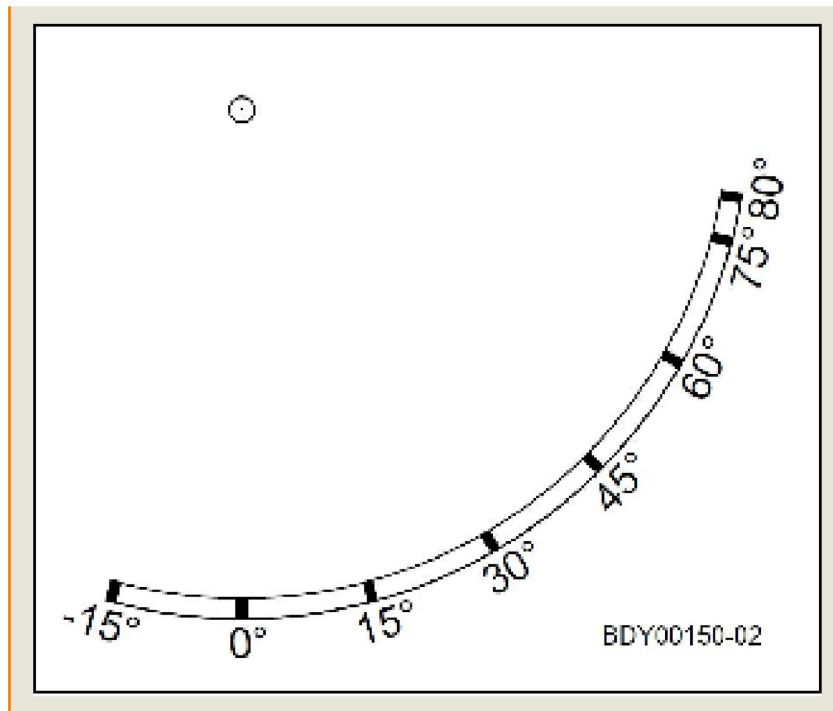
Stinger 7526 Service Crane



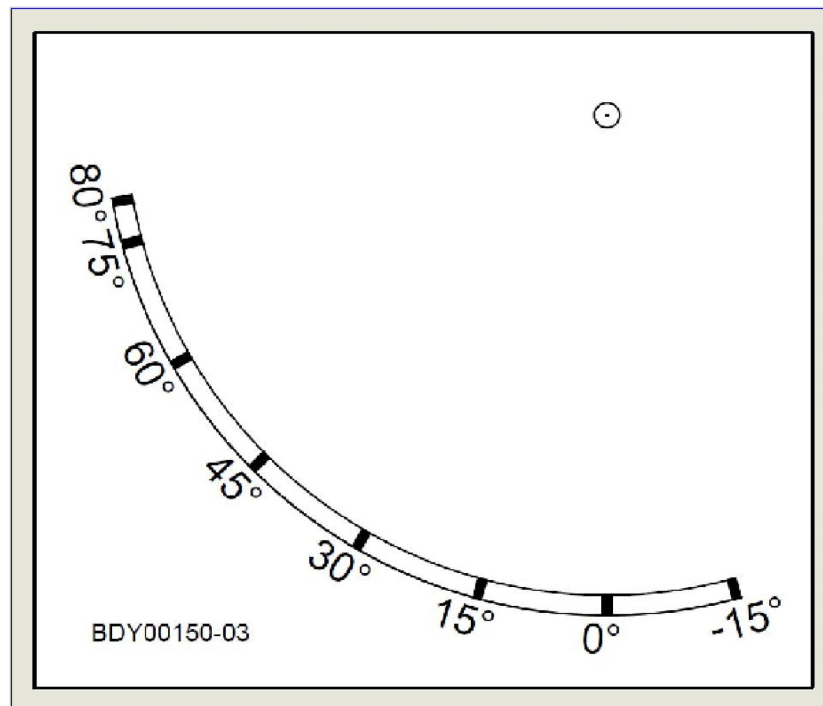
BDY32006-14
W 7.0 X H 2.30
(2 EACH)

7530

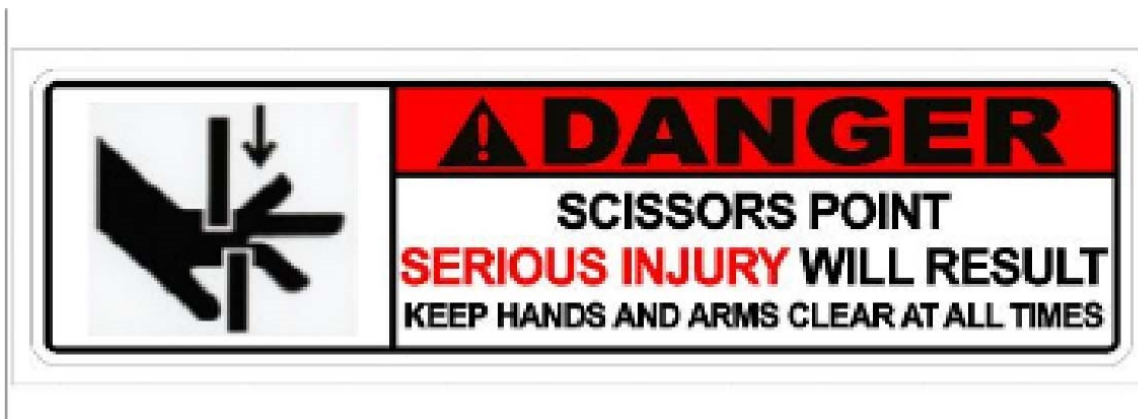
BDY32032-01
W 12 X H 3.70
(2 EACH)



BDY00150-02
W 8.35 X H 7.10
(1 EACH)



BDY00150-03
W 8.35 X H 7.10
(1 EACH)



BDY32006-05
W 8.70 X H 2.45
(2 EACH)



BDY32006-10
W 1.5 X H 1 (PER ARROW)
(1 EACH)



BDY32006-12
W 3.20 X H 1.55
(2 EACH)



BDY32006-06
W 3.20 X H 1.55
(2 EACH)



BDY32006-11
W 2.50 X H 1.80
(1 EACH)



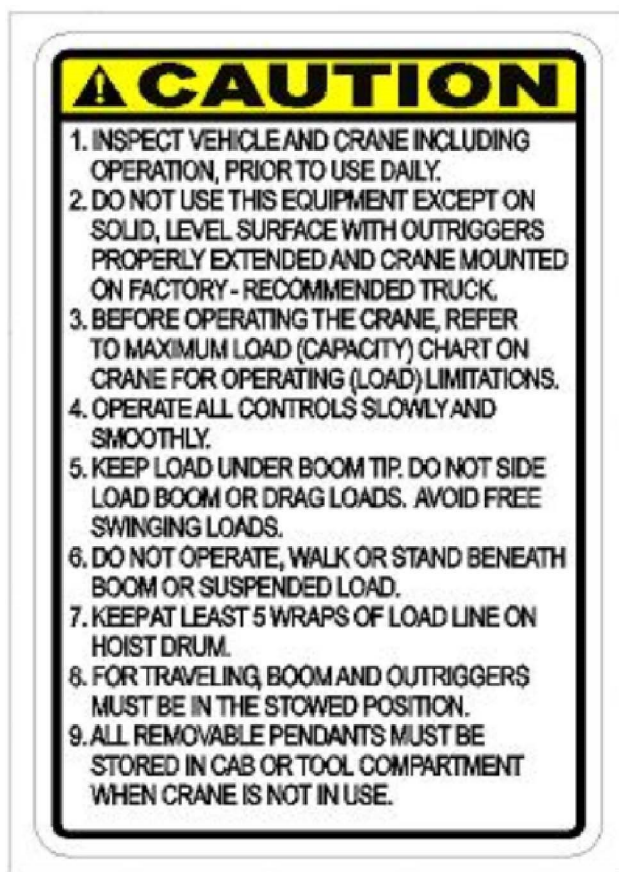
BDY32006-08
W 2.95 X H 4.0
(2 EACH)



BDY32006-09
W 4 X H 2.5
(2 EACH)



BDY32006-07
W 4.20 X H 1.45
(2 EACH)



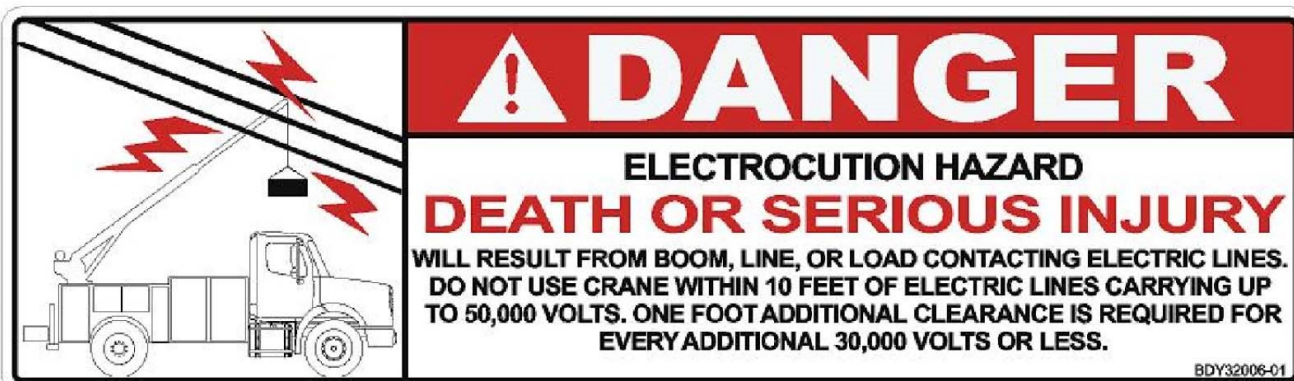
BDY32006-13
W 3.20 X H 4.70
1 EACH



BDY32006-02
W 1.70 X H 1.35
(2 EACH)

STINGER

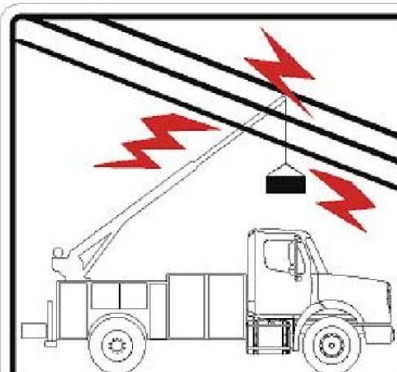
BDY32006-04
W 20 X H 4.75
(2 EACH)



BDY32006-01
W 12.45" X H 3.70
(2 EACH)

STINGER

BDY32006-04
W 20 X H 4.75
(2 EACH)



! DANGER

ELECTROCUTION HAZARD

DEATH OR SERIOUS INJURY

WILL RESULT FROM BOOM, LINE, OR LOAD CONTACTING ELECTRIC LINES.
DO NOT USE CRANE WITHIN 10 FEET OF ELECTRIC LINES CARRYING UP
TO 50,000 VOLTS. ONE FOOT ADDITIONAL CLEARANCE IS REQUIRED FOR
EVERY ADDITIONAL 30,000 VOLTS OR LESS.

BDY32006-01

BDY32006-01
W 12.45" X H 3.70
(2 EACH)



WARRANTY

Load King (herein after referred to as the COMPANY) warrants all products manufactured by it and purchased by you to be free from defects in material and manufacture at the time of shipment. This warranty includes:

Two years on Load King parts

Two years on repair labor

Three years on structural parts

The COMPANY will furnish replacements for such parts as the COMPANY finds to have been defective at the time of delivery or, at the COMPANY's option, will make or authorize repairs to such parts, provided that, upon request, such parts are returned, transportation is prepaid to the factory from which they were shipped.

This warranty shall not apply to any Product which has been subjected to misuse, misapplication, overloading, neglect (including but not limited to use of unauthorized parts or attachments), adjustments or repair. Engines, motor, tires, wheels, suspensions, axles, etc. and any accessories furnished with or used in the COMPANY's products, but which are not manufactured by the COMPANY, are not warranted by the COMPANY but are sold only with the express warranty, if any, or the manufacturers thereof. This warranted is limited to the first purchaser/user and is not transferable.

THE FOREGOING IS IN LIEU OF ALL OTHER WARRANTIES, WHETHER EXPRESSED OR IMPLIED (INCLUDING, WITHOUT LIMITATIONS, OF MERCHANTABILITY AND FITNESS OF ANY PRODUCT FOR A PARTICULAR PURPOSE), AND OF ANY OTHER OBLIGATION OR LIABILITY ON THE PART OF THE COMPANY. THERE ARE NO WARRANTIES WHICH EXTEND BEYOND THE DESCRIPTION OF THE FACE THEREOF.

LIMITATION OF LIABILITY

It is expressly understood and agreed by you that the COMPANY's liability for its products, whether due to breach of warranty, or otherwise is limited to the furnishing of such replacement parts, F.O.B. factory, and the COMPANY will not be liable for any other injury, loss, damage, or expense, whether direct or consequential, including but not limited to loss of use, income, profit, or production, injury to person or increase in cost of operation, spoilage of or damage to material, arising out of or in connection with the sale, installation, use or inability to use, or the repair or replacement of the COMPANY's products.

All used vehicles and/or bodies are sold in the "AS IS" condition and no expressed or implied warranty is made.

All of COMPANY'S Products are of high quality and are manufactured in conformity with the best commercial practices in the various lines. The COMPANY guarantees all Products manufactured by it to be free from defects in material and manufactured at the time of shipment, for one (1) year from date of delivery. In addition, the COMPANY guarantees the portion of the product to be considered structural for one (1) year from date of manufacture.

While Load King, LLC. designs and manufactures its specific equipment configurations to industry standards, it is ultimate responsibility of the buyer/operator to assure that all loads are properly loaded and distributed. All loads must comply with the applicable state and federal load limits.

LOAD KING WARRANTY DATA RECORD

Service Crane Warranty Form Submission			Date	
Date of Delivery				
Model Number				
S/N				
Dealer				
Address				
Customer				
Address				

Record this information at the time that warranty registration form is completed and returned to Load King



Load King

PO Box 427

Elk Point, South Dakota, USA 57025-0427

Toll Free: (888) 264-5522