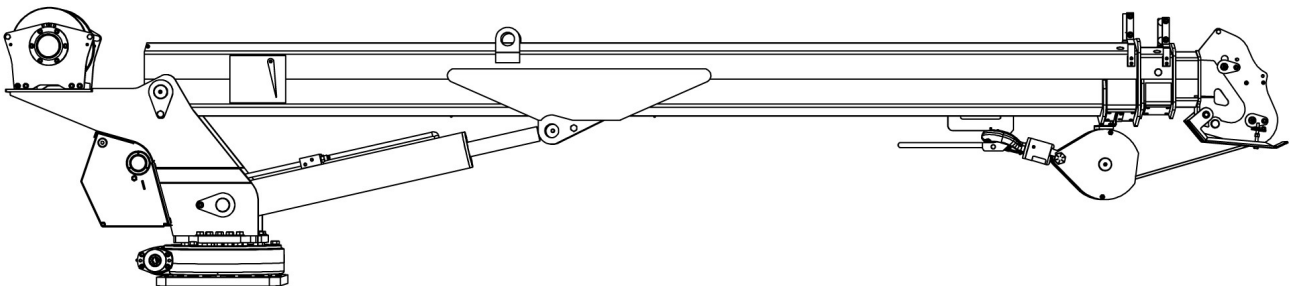




---

# OPERATION, SERVICE, & PARTS MANUAL for 10000 SERVICE CRANES



**Manual P/N BDY32344**

For service and maintenance, reach out to the call & information center at

[833-CT1S-911 \(833-281-7911\)](tel:833-CT1S-911) or email [CIC@CUSTOMTRUCK.COM](mailto:CIC@CUSTOMTRUCK.COM).

REV A

DECEMBER, 2019



Table of Contents

1.0 Specifications .....9

1.1 General Specifications .....9

1.2 Load Chart..... 11

1.3 Dimensions ..... 14

1.4 Hydraulic Requirements ..... 14

1.5 Minimum Chassis Requirements..... 14

1.6 Detailed Crane Functions Described..... 14

2.0 Safety and Operations ..... 15

2.1 Safety..... 15

2.2 Responsibilities of Owners, Users and Operators ..... 17

2.3 Features of the Load King 10000 Crane ..... 17

3.0 Service ..... 20

3.1 Inspection ..... 20

3.2 Maintenance..... 21

Turret Assembly..... 28

Winch ..... 38

Winch Brake ..... 42

Valve Cover ..... 44

Control valve ..... 46

Boom Assembly 10022 ..... 48

Boom Assembly 10022 ..... 50

Boom Assembly 10022 ..... 52

Boom Assembly (Cont.)..... 54

Extension Cylinder ..... 62

Snatch Block ..... 64

Load King 10000 Service Crane Labels ..... 66

Warranty ..... 70



## REVISION CONTENT

[illegible]



Load King

7701 Independence Ave, Kansas City, MO 64125

Toll Free: (605) 356-3301

## Company

Load King has been producing quality trailers since 1956. We are located in Elk Point, South Dakota.

Although the trailer industry is an ever-changing environment and we've seen many changes over the years, we have remained committed to the simple philosophy that we will make a reasonable profit through the designing, manufacturing, and marketing of top quality products that we can always be proud to call Load King. We have not, and will not, compromise in this area.

Quality shows in all facets of an operation, from the moment you make your first phone call for a product inquiry to the time you sell your used equipment and realize you've received top dollar on your sale. We continue to strive for excellence in every area and never quit trying to improve. We have earned our reputation believing that quality is value and value sells products.

Through our shared Engineering, Marketing and Sales teams, Load King and Custom Truck One Source bring that tradition of quality and value to another market with the Load King 10000 Service Crane.






## About Custom Truck One Source

Beginning in February of 2015, three family-owned and operated companies (Custom Truck & Equipment, Utility Fleet Sales and Forestry Equipment of VA) joined together to form what is now Custom Truck One Source. Shortly after its inception, UCO Equipment became a part of the CTOS family along with TNT Equipment six months later. In December 2015, CTOS welcomed its sixth company under its brand, Load King, a leading manufacturer of high-quality and customizable trailers.

The announcement of the partnership represented the platform's collective commitment to the continued growth and dominance of each legacy company's individual offerings, now compounded to leverage the expertise of the team and, ultimately, better serve loyal CTOS customers all over the world. CTOS will build upon the market positions of each legacy company, while serving as a single source supplier of specialty equipment and services for the utility and heavy equipment industries. The utility and heavy equipment platform collectively offers sales, rentals, parts and after market services, remanufacturing, customized equipment and transportation.

## DEFINITIONS USED IN THIS MANUAL

The following table describes text and symbols used to highlight important information.

Signal Word	Symbol	Explanation
DANGER		Danger is used to alert readers about an immediate and serious hazard that will likely be fatal.
WARNING		Warning is used to alert readers about the potential for serious injury or death or serious damage to equipment.
CAUTION		Caution is used to alert readers about the potential for anything from moderate injury to serious equipment damage or destruction.
READ		Read is used to alert readers of information to be read on machinery
NOTE		Note is used for a tip or suggestion to help readers carry out a procedure successfully.

Table—1



## **1.0 Specifications**

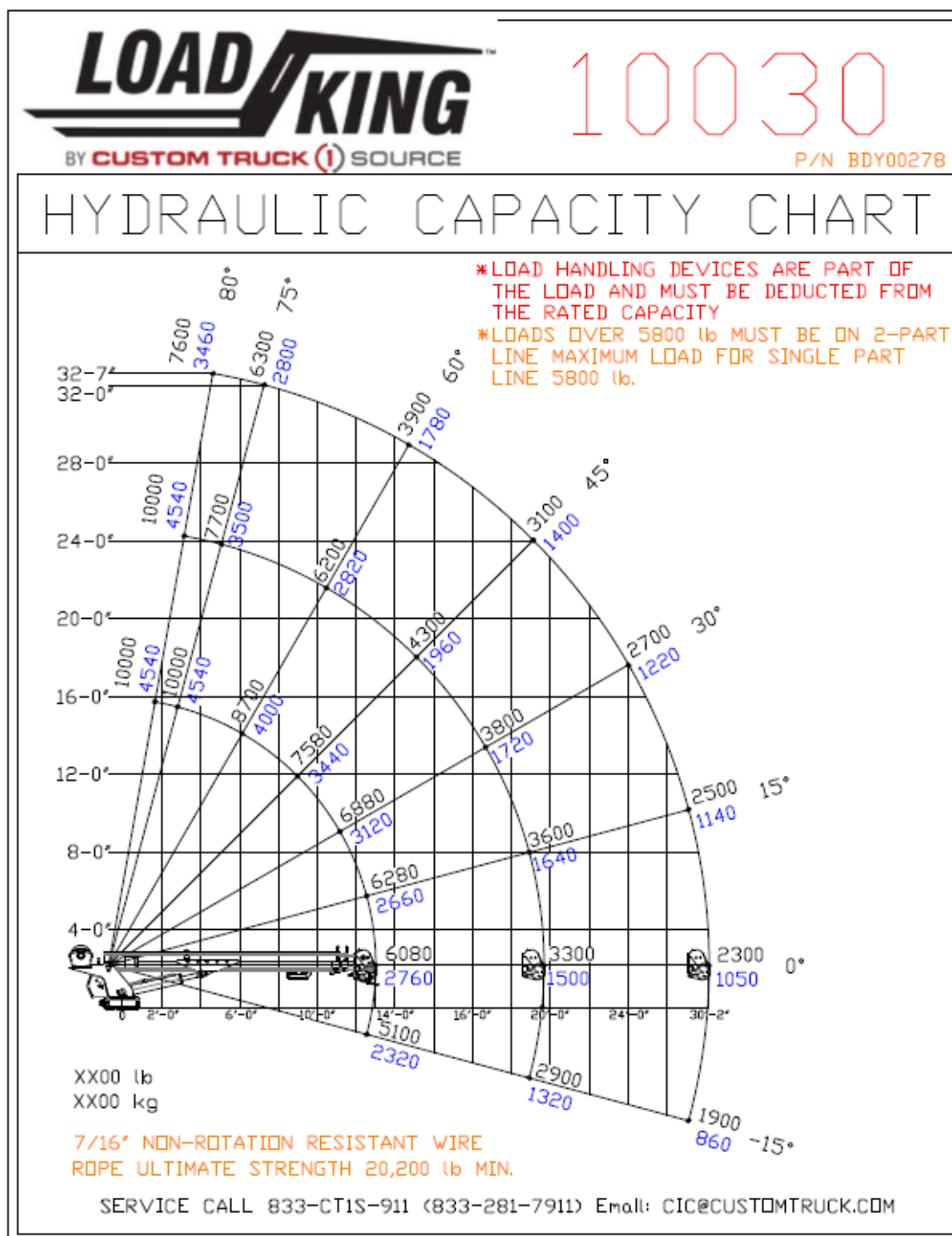
**Description** The Load King 10000 Service Crane is hydraulically powered with proportional control for all functions. The crane is provided with remote control which utilizes a Canbus controller. Maximum reach is 30 feet and boom elevation varies from -15 to +80 degrees. Loads can be controlled at angles below level as well as above level. Rotation is 380 degrees total. With boom tip lighting the unit also serves as a mobile work light.

### **1.1 General Specifications**

10030 Crane Specifications	
Crane Rating	72500 FT-# (10.81 ton-m)
*FT-# is the horizontal distance from the center of rotation to the load line x the weight of the load	
Horizontal Reach	30'-0" (9.84 m)
Hydraulic Extend	204" (5.58 m)
Crane Weight	2450# (1110kg)
Center of Gravity	39.5" (1 m) Forward of Centerline
Load Line	7/16" IWRC x 1230 FT (11.1 mm X 39.4 M)
Storage Height	40 3/4" (1.04M)
Storage Length	16' -1/4" (5.25 m)
Mounting Plate	1 1/4" Thick (31.8mm)
Bolt Pattern	14.75" x 18.75" (375 mm x 476 mm)



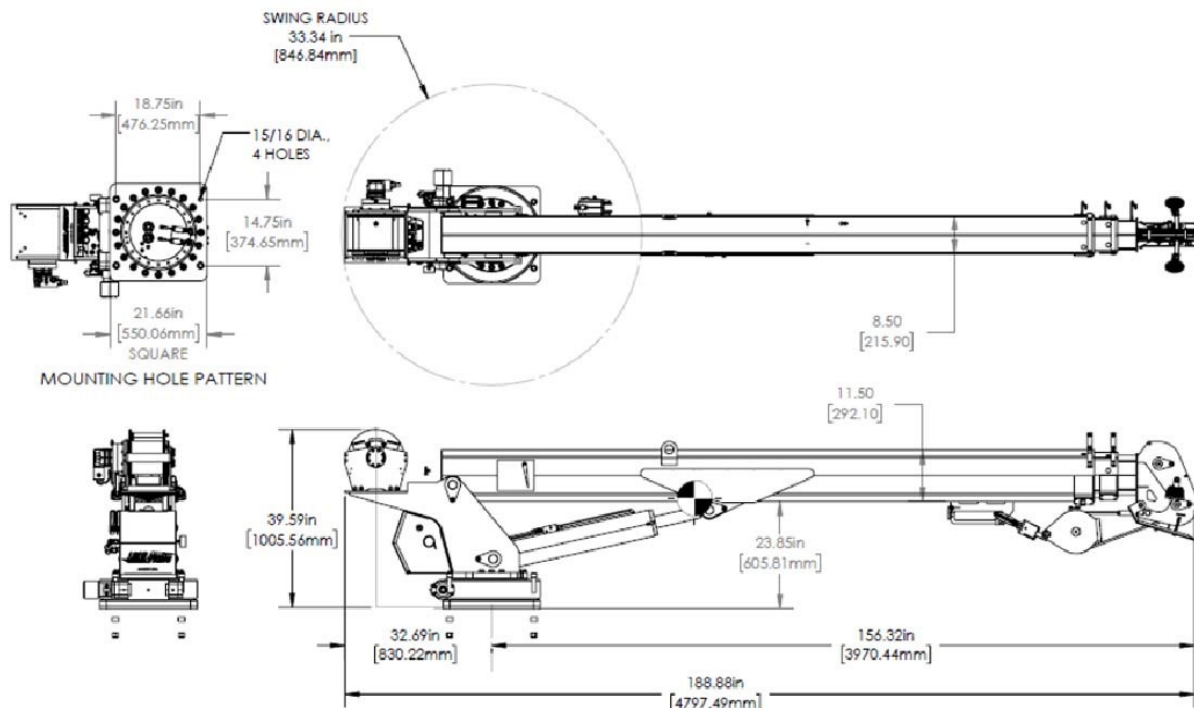
## 1.2 Load Chart







### 1.3 Dimensions



### 1.4 Hydraulic Requirements

ISO 32 hydraulic fluid, 15 gpm flow @ 3000 psi

### 1.5 Minimum Chassis Requirements

Rated Bending Moment (RBM)- 1,200,000 in-#

Gross Vehicle Weight Rating (GVWR)- 26,000 # (11,820 kg)

Body- Load King Voyager II rated 72,500 FT-# (9.54 ton-m)

### 1.6 Detailed Crane Functions Described

Rotation is 370 degrees non-continuous and is provided by a hydraulic motor driven worm gear slewing drive. Patented hourglass worm technology provides increased gear strength, and the drive is rated IP55 for dust and water incursion.

Boom Extend is provided by two double acting cylinders in a piggyback arrangement. The first cylinder extends/retracts the 2<sup>nd</sup> stage boom, the second cylinder extends/retracts the 3rd stage boom. The cylinders have a dual counterbalance valve to hold the boom extension above and below level.

Hoist Up and Down is provided by a hydraulic motor connected to a planetary gear box and cable drum with holding brake.

Boom Up and Down is provided by a double acting cylinder with a single counterbalance valve on the base end of the cylinder.

## 2.0 Safety and Operations

### 2.1 Safety

It is your responsibility to safely operate and maintain this crane, and adhere to all applicable standards. Be aware of and observe all federal, state, local, and employer safety standards including ASME B30.5 Mobile and Locomotive Cranes, and OSHA 1910.180. If required by state or local standards you may need to become a certified operator before operating this crane.



Prior to operating this unit every person working with a Load King crane should have read and understand all material in this manual. Safe operation requires that the crane not be overloaded, misused or altered, all of which may void the warranty. Operators must understand the lift capacity ratings as shown on the Load Chart. Look at the horizontal distance from the center of rotation and the angle of boom elevation to determine the correct load rating.



For the operator's protection, there are warning labels and safety devices on the Load King Crane that are **NOT** to be tampered with or removed. It is important for the operator to read all warning labels before operating the Load King Crane. It is the owner's responsibility to ensure that the operator and workers on and around the Crane understand all of the safety warnings herein and affixed to the machine. **Do not operate Crane if safety labels are missing or damaged.**



#### **WARNING**

This crane is not electrically insulated. It must never be used near energized power lines. Load King cranes, load lines, and the load handled must always maintain a safe minimum distance from electrically energized power lines. See ASME B30.5 for safe minimum distances and your employer's work rules.



#### **WARNING**

This crane must be well maintained and regularly inspected for safe and efficient operation. Failure to operate and maintain this crane in accordance with the instructions of this manual can result in serious injury personal injury or death.

**WARNING**

Never alter hydraulic valve settings unless recommended by factory authorized personnel. To do so could result in equipment malfunction or failure and can result in serious personal injury or death.

**WARNING**

Never alter the Hydraulic Overload Protection (HOP) system. Its function is to protect the crane from overload.

**WARNING**

Never alter the Anti-Two Block (A2B). Its function is to prevent contact between the load block and boom tip sheave. The load may be suddenly dropped should contact occur resulting in serious injury personal injury or death.



## **2.2 Responsibilities of Owners, Users, and Operators**



### **NOTICE**

Your Load King 10000 crane is designed for material handling and specifically for hoisting loads within the range of the Load Chart provided.

Owners, users, and operators have specific responsibilities as designated by OSHA 1910.180 and ASME B30.5 and state or local requirements. Failure to comply with these regulations can result in citations and fines.



### **WARNING**

Failure to comply with these regulations may result in equipment damage, property damage, and can result in serious personal injury or death.

This manual will primarily be concerned with equipment features and use of the Load King 10000 crane.

## **2.3 Features of the Load King 10000 Crane**

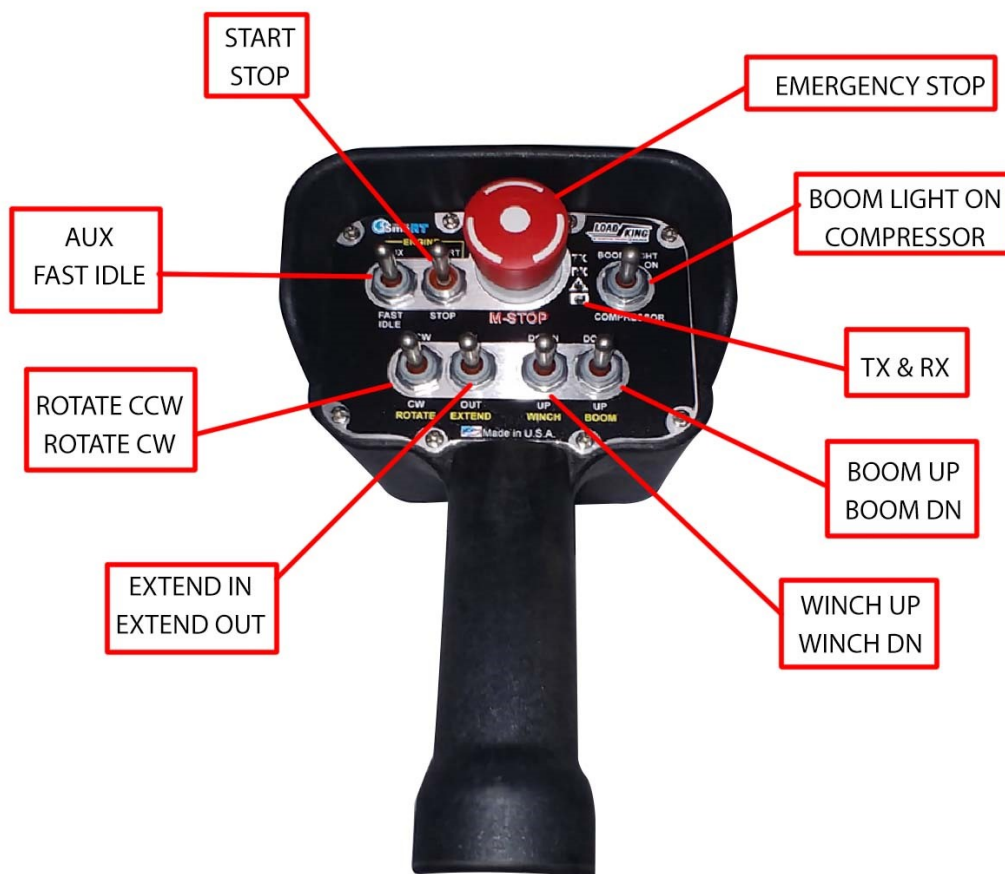
**2.3.1** Your Load King crane has specific features designed to enhance safety and contribute to ease of operation.

**2.3.2** Remote controls and proportional control of all functions are provided. A pistol grip radio transmitter sends commands to the turret mounted receiver. The transmitter is linked only to its receiver by transmitted identity codes. The remote system complies with J1939. The overload protection system controls are programmed into the receiver.

To begin operations, push the E-Stop clockwise until it pops up. Hold the Engine Start switch for a few seconds until the TX and RX lights are flashing. This indicates the remote and receiver are linked up. The remote will time out after 15 minutes of inactivity. To restart engage the Engine Start switch again.

The pistol grip index finger lever movement corresponds to the speed at which the functions operate. To operate the Rotate, Boom Extend, Winch, or Boom Elevation first move the finger lever the desired amount for starting speed. Then select a function or functions with one of the toggle switches. The function or functions will then move at speeds according to the position of the finger lever.

Remote indicator lights



Emergency Stop is activated by pushing down on the E-Stop button. Release the E-Stop by twisting clockwise.

In the event of a transmitter or receiver failure the tether cable can be connected to restore operations. Failing that the control valve is equipped with manual overrides. Press the Dump Valve and Flow Valve override plus the function desired to override and operate manually.

**2.3.3** Anti-Two Block (A2B) feature prevents contact between the load block and boom tip sheave.

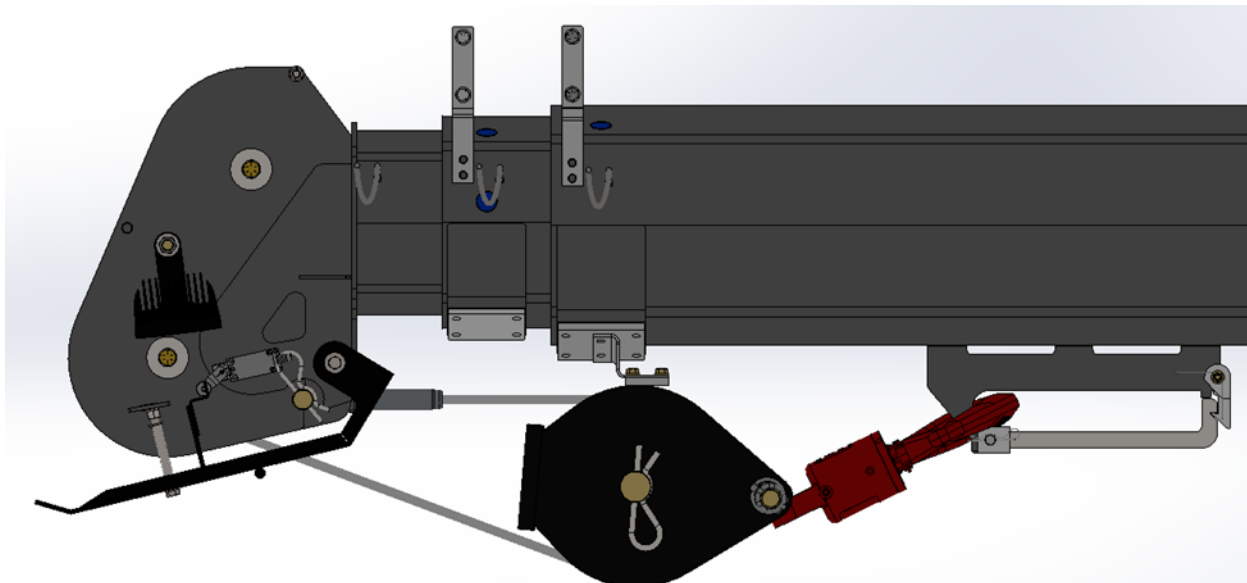


#### WARNING

The load may be suddenly dropped should contact occur resulting in serious injury personal injury or death.

The A2B is active at all times until disengaged by releasing the A2B switch. Adjust the A2B frame bracket to disengage the switch at contact. When the A2B has made contact the following functions are disabled: Hoist Up and Boom Extend. To exit the A2B active condition reverse travel by Hoisting Down or Retracting Boom.

Your A2B feature also assists in stowing the hook for travel. The A2B will stop Hoist UP as the load line is tightened to prevent stowing damage and relieve the load line of tension when stowed. Check the adjustment of the A2B frame bracket to disengage the A2B switch just before the load block meets the stow bumper.



### 2.3.4 Hook Stow Swing Arm

A feature for hook stowing has been provided in the stow swing arm which allows connecting the hook to the stow about one foot lower than usual. This means less height to lift the load block and hook to the stow bracket. Once hooked rotate the stow swing arm up until the pawl latches in. Tighten up the load line until the block nears the stow position, the A2B when properly adjusted will shut off the Hoist Up.

**2.3.5 Hydraulic Overload Protection (HOP)** is active at all times to help prevent overload situations. The pressure transducer located on the Lift cylinder sends a pressure signal to the controller module. If the hydraulic pressure is above 3050 psi the HOP alarms the following functions are disabled: Hoist Up, Boom Extend, and Boom Down. To exit the HOP active condition Retract the boom a short distance to request HOP exit. Then do any movement that reduces the load on the boom Hoist Down (to ground), Boom Retract, or Boom Up until the alarm is silent.

If the HOP condition was entered by topping the Boom all the way up to the Lift cylinder's end of stroke (and subsequent high pressure), retract the boom a short distance to request HOP exit. The controller will allow 2 seconds of Boom Down to relieve the condition.

### 2.3.6 Planetary Hoist

The hoist is intended to be used only for lift loads vertically.



#### **WARNING**

Do not drag loads sideways using the Hoist or Boom functions. Undo stresses may cause component or boom failure even for light loads resulting in serious injury personal injury or death.

The hoist is planetary geared for speed and efficiency. It is equipped with a spring applied hydraulically released brake. Hoist speed is 90 FPM (feet per minute) single parted.

The Load Block BDY00236 enables the crane load line to be two parted. The end of the load line is snatched back to the boom tip instead of connected to the hook.

### 2.3.7 Boom Elevation

The Lift Cylinder raises and lowers the boom. It has a single counterbalance on the base end. None is required for the rod end.

## **3.0 Service**

This unit must be regularly maintained and inspected for safe and efficient performance. See Section 3.2 for Maintenance Schedule.

### **3.1 Inspection**

Inspect the unit daily if in daily use or periodically if in occasional use. Determine the inspection intervals according to Ch. 5 Inspection, Testing, and Maintenance Requirements of ASME B30.5

#### **Checklist-**

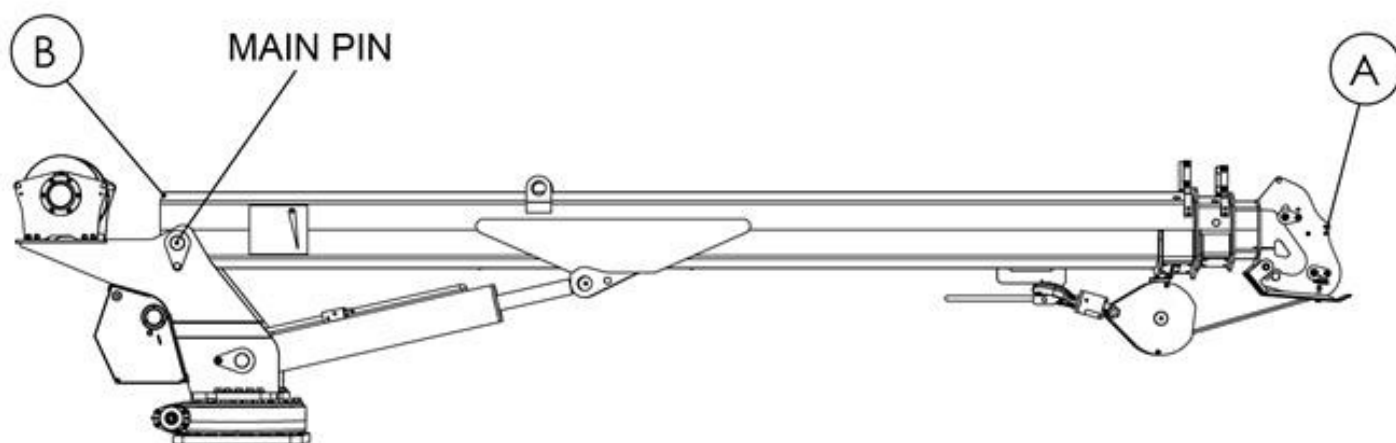
- Check for loose or worn parts, missing safety related parts, and damaged parts.
- Check the load line for crushed strands and broken strands.
- Inspect that all lubricated items have been lubricated.
- Check the Transmitter that all functions are operable. Check the E-Stop.
- Check the Anti-Two Block (A2B) switch by lifting the A2B frame to disengage the switch. The Hoist should not raise with the A2B system disengaged.
- Check for hydraulic leaks.
- Test the Hydraulic Overload Protection (HOP) annually. The transducer should cause the HOP to disengage at 3050 psi. The HOP stops the following Hoist Raise, Boom Extend, and Boom Lower until the system pressure is less than 3050 psi. Exiting the HOP alarm mode can be accomplished by Lowering the load to the ground, retracting the boom (most effective), or raising the boom.

## 3.2 Maintenance



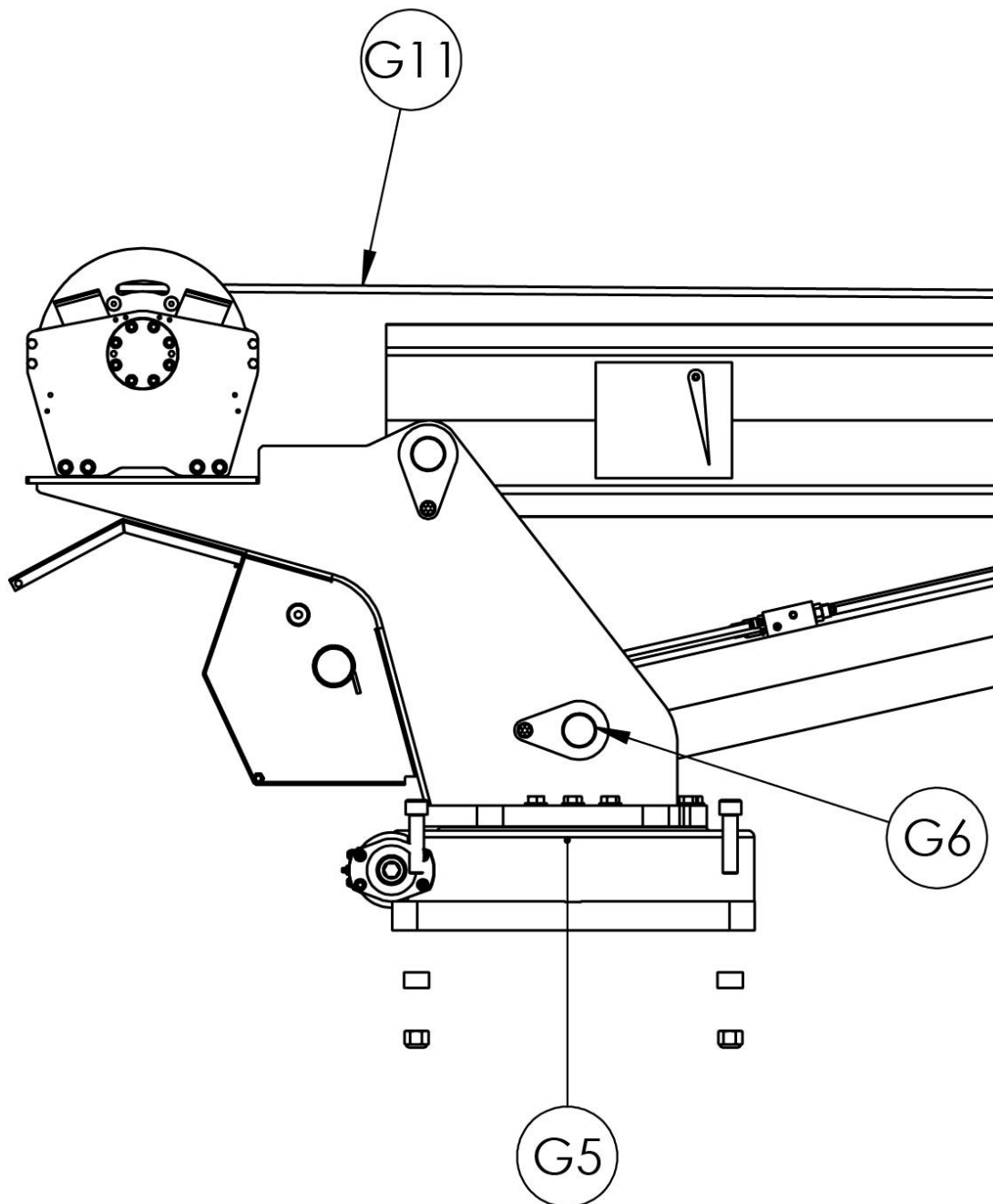
### WARNING

If removal of the main pin is ever necessary secure the boom tip with a 2500# freight strap to the rear of the 1<sup>st</sup> Stage Boom as shown below. The booms can extend out or separate with the main pin removed. Failure to do so could result in equipment malfunction or failure and can result in serious injury personal injury or death.



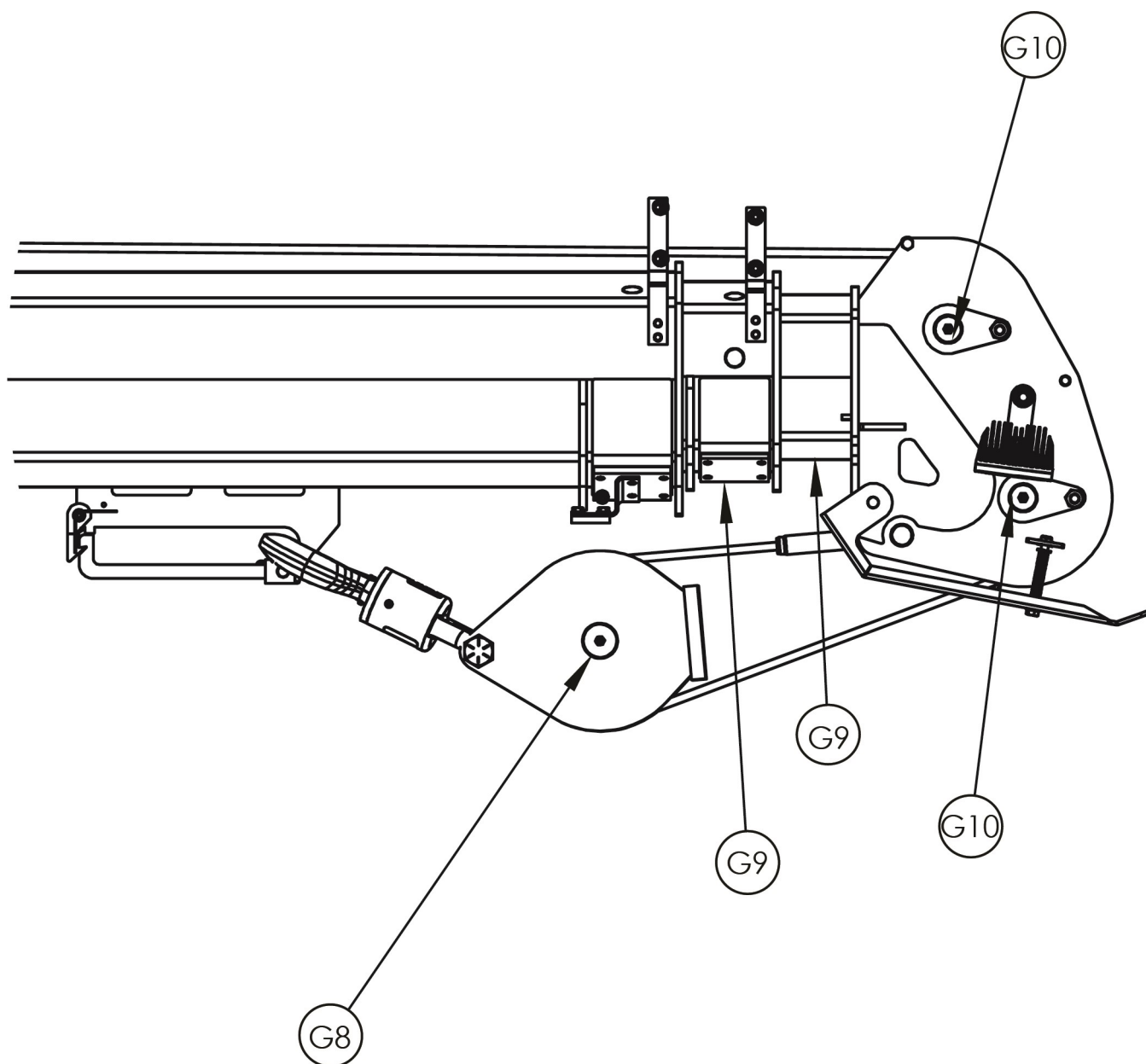
### 3.2.1 Lubrication

Lubricate the crane at the lube points shown in the diagram below. Use High Pressure Grease such as Lubriplate Multi-Lube A or Shell Gadus S2.



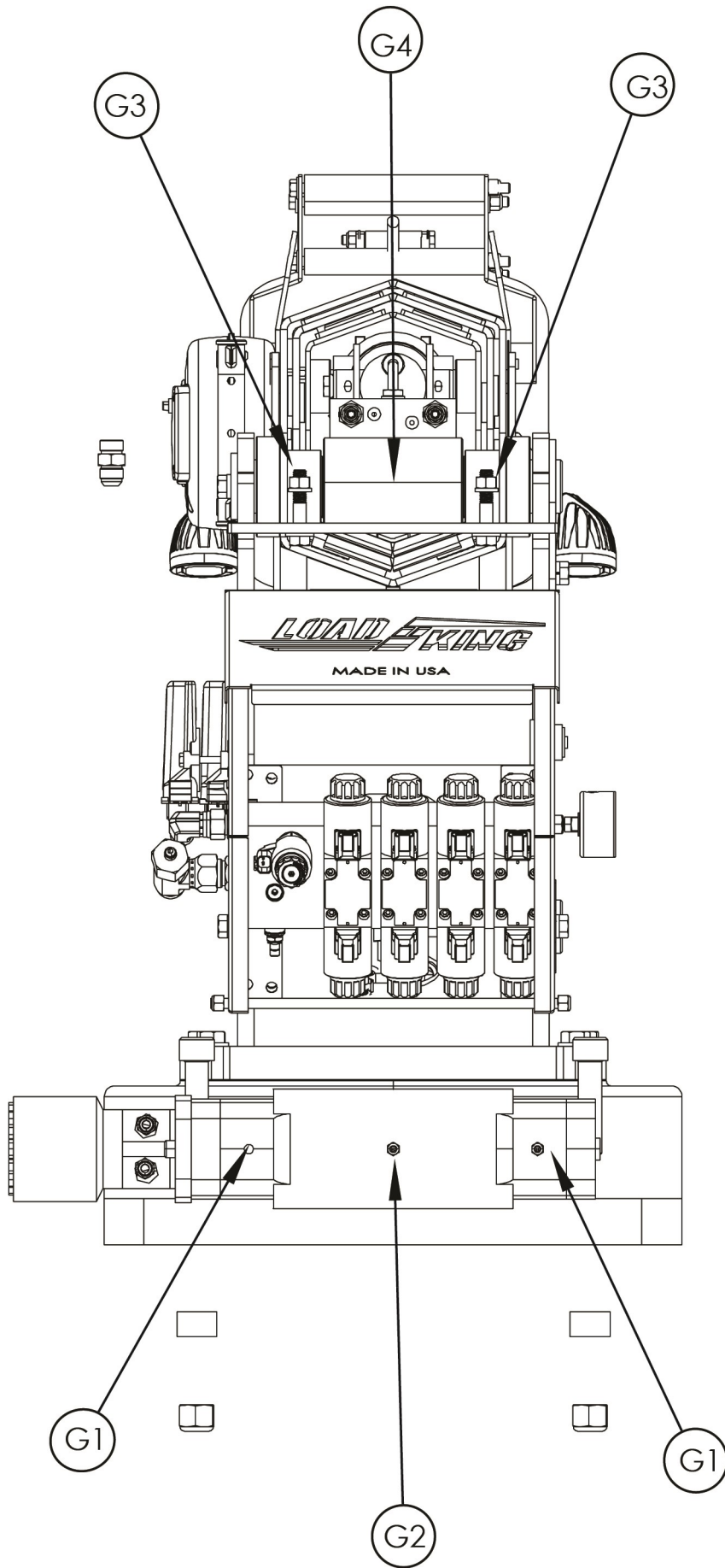
**CAUTION:** ALL grease zerks are to be topped off prior to first use and every month following.

ITEM	DESCRIPTION	QTY	LUBRICANT	HOURS OF OPERATION
G1	SLEW DRIVE ROLLER BEARING	2	MULTI-LUBE A	150
G2	SLEW DRIVE WORM THREAD	1	MULTI-LUBE A	150
G3	BEARING 1ST STG BOOM	2	MULTI-LUBE A	8
G4	EDTEND CYL. ROD END	1	MULTI-LUBE A	8
G5	SLEW DRIVE BALL BEARINGS	2	MULTI-LUBE A	150
G6	LIFT CYL. BASE END	1	MULTI-LUBE A	8
G7	LIFT CYL. ROD END	1	MULTI-LUBE A	8
G8	LOAD BLOCK SHEAVE BEARING	1	MULTI-LUBE A	8
G9	BOTTOM OF 2ND & 3RD BOOMS	2	LUBE-A-BOOM	8
G10	SHEAVE BEARING	2	MULTI-LUBE A	8
G11	WIRE ROPE LOAD LINE	1	LIGHT OIL	1 MONTH



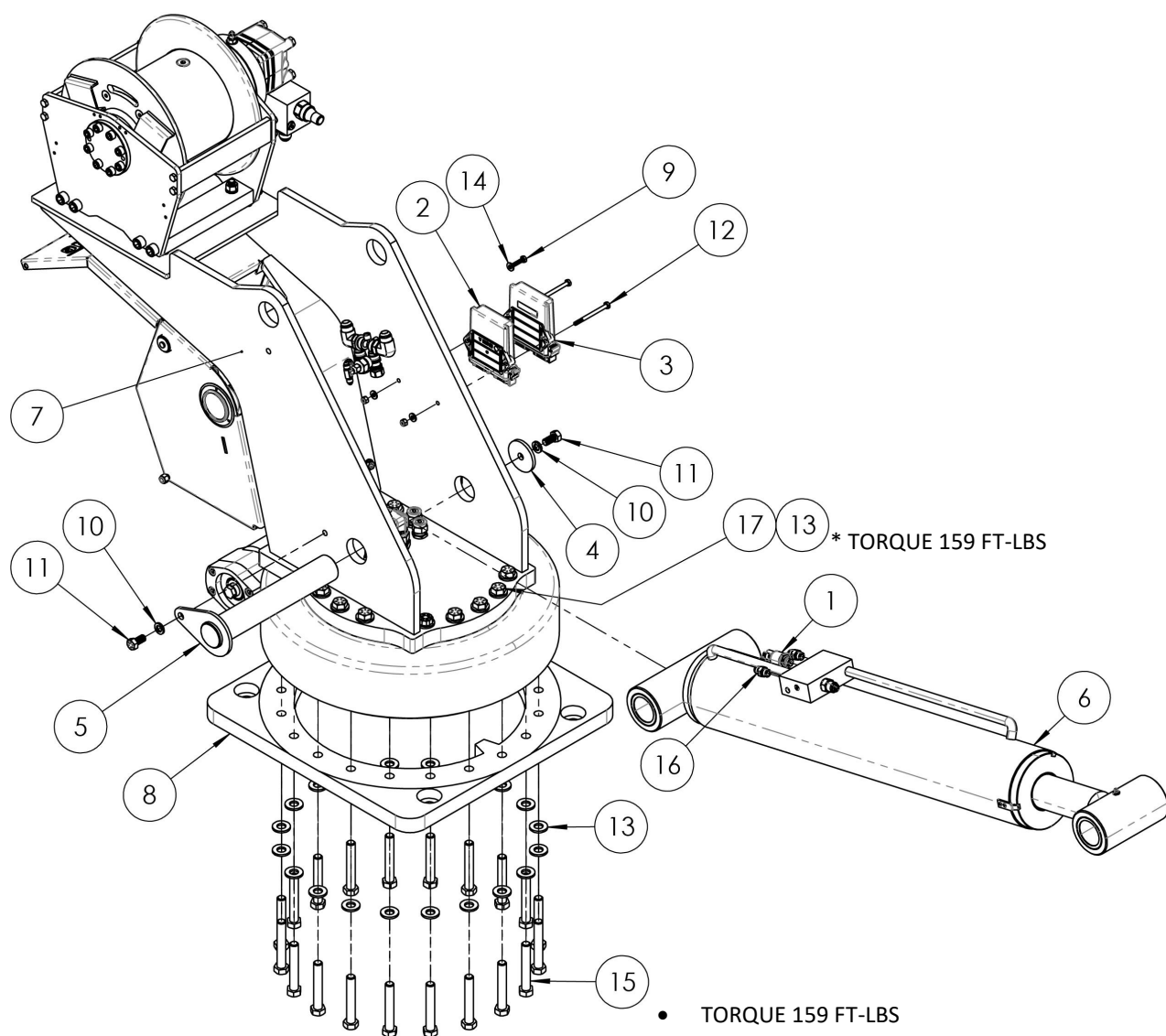


ITEM	DESCRIPTION	QTY	LUBRICANT	HOURS OF OPERATION
G1	SLEW DRIVE ROLLER BEARING	2	MULTI-LUBE A	150
G2	SLEW DRIVE WORM THREAD	1	MULTI-LUBE A	150
G3	BEARING 1ST STG BOOM	2	MULTI-LUBE A	8
G4	EDTEND CYL. ROD END	1	MULTI-LUBE A	8
G5	SLEW DRIVE BALL BEARINGS	2	MULTI-LUBE A	150
G6	LIFT CYL. BASE END	1	MULTI-LUBE A	8
G7	LIFT CYL. ROD END	1	MULTI-LUBE A	8
G8	LOAD BLOCK SHEAVE BEARING	1	MULTI-LUBE A	8
G9	BOTTOM OF 2ND & 3RD BOOMS	2	LUBE-A-BOOM	8
G10	SHEAVE BEARING	2	MULTI-LUBE A	8
G11	WIRE ROPE LOAD LINE	1	LIGHT OIL	1 MONTH



ITEM	DESCRIPTION	QTY	LUBRICANT	HOURS OF OPERATION
G1	SLEW DRIVE ROLLER BEARING	2	MULTI-LUBE A	150
G2	SLEW DRIVE WORM THREAD	1	MULTI-LUBE A	150
G3	BEARING 1ST STG BOOM	2	MULTI-LUBE A	8
G4	EDTEND CYL. ROD END	1	MULTI-LUBE A	8
G5	SLEW DRIVE BALL BEARINGS	2	MULTI-LUBE A	150
G6	LIFT CYL. BASE END	1	MULTI-LUBE A	8
G7	LIFT CYL. ROD END	1	MULTI-LUBE A	8
G8	LOAD BLOCK SHEAVE BEARING	1	MULTI-LUBE A	8
G9	BOTTOM OF 2ND & 3RD BOOMS	2	LUBE-A-BOOM	8
G10	SHEAVE BEARING	2	MULTI-LUBE A	8
G11	WIRE ROPE LOAD LINE	1	LIGHT OIL	1 MONTH

# TURRET ASSEMBLY

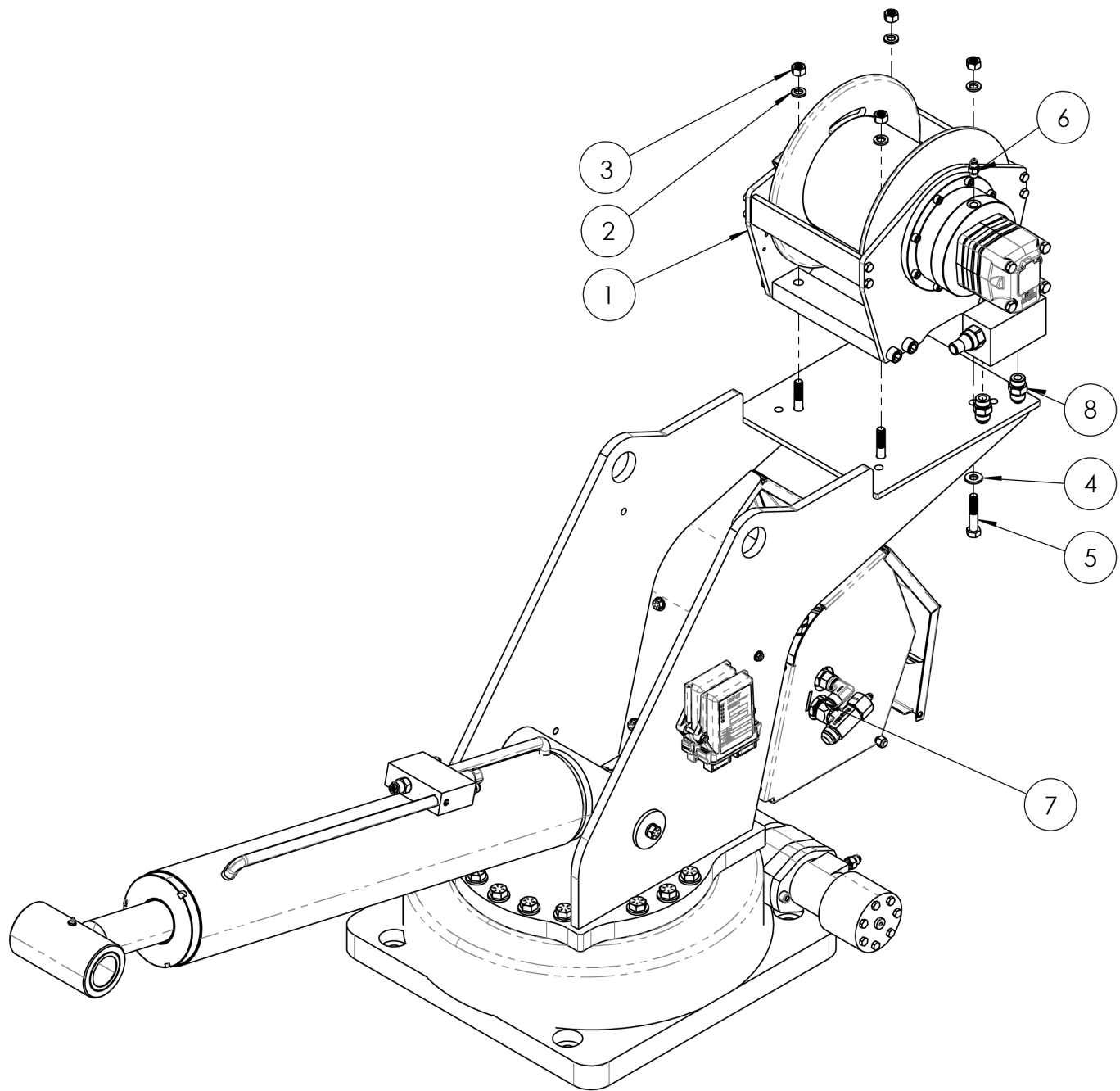


AT ANNUAL INSPECTION, REMOVE THE CRANE MOUNTING BOLTS TO THE BODY AND CHECK THE TORQUE OF THE LOWER SLEW DRIVE BOLTS. REPLACE ANY BOLTS FOUND TO NOT STILL BE AT PROPER TORQUE WITH NEW BOLTS.

**TURRET ASSEMBLY (Cont.)**

ITEM NO.	PART NUMBER	DESCRIPTION	QTY
1	BDY20025	TRANSDUCER 5000 PSI 4-20mA 3 PIN	1
2	BDY20020-03	CANBUS CL-451-160-10 MASTER IO MODULE	1
3	BDY20020-02	RECEIVER R170E	1
4	BDY00132-01	WASHER 2 1/2" OD X 1/2 ID	1
5	BDY00131	SHAFT WLDMT 2" X 12-3/16	1
6	BDY00126	LIFT CYLINDER LK10000	1
7	BDY00102	TURRET WLDMT. LK10000	1
8	BDY00101	BASE PLATE SLEW DRIVE	1
9	HCS-04-20-08-YZGR8	HEX CAP SCREW 1/4-20 X 1 YZ GR8	1
10	LWSHR-08-YZGR8	LOCK WASHER 1/2 DIA YZ GR8	6
11	HCS-08-13-08 YZGR8	HEX CAP SCREW 1/2-13 X 1 YLW ZN GR8	2
12	HCS-04-20-26-YZGR8	HEX CAP SCREW 1/4-20 X 3 1/4 YZ GR8	2
13	FWSHR-10-YZGR8	5/8 DIA SAE FLAT WASHER YZN GR8	36
14	FWSHR-04-YZGR8	1/4 DIA FLAT WASHER YZ GR8	4
15	HCS-10-11-40-YZGR8	5/8-11 X 5 HEX CAP SCREW YZN GR8	20
16	6400-06-06	PORT ADAPTER -06MJ X -06 M ORING	10
17	HCS-10-11-26-YZGR8	5/8-11 X 3 1/4 HEX CAP SCREW YZN GR8	16

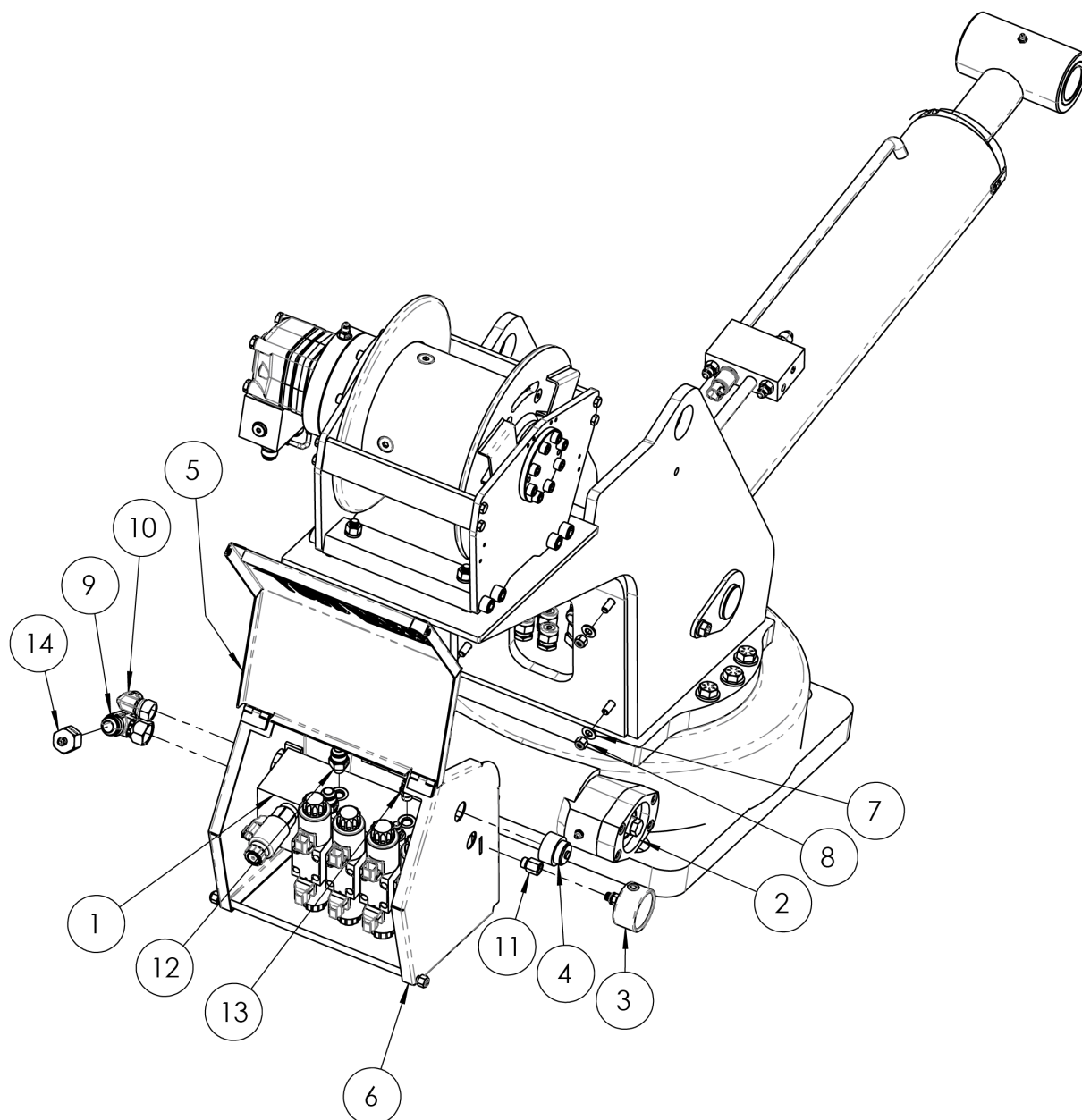
**TURRET ASSEMBLY (Cont.)**



**TURRET ASSEMBLY (Cont.)**

ITEM NO.	PART NUMBER	DESCRIPTION	QTY
1	BDY20022-04	HOIST 5K PLANETARY A55 DX W/ 7/16" ROPE	1
2	LWSHR-08-YZGR8	LOCK WASHER 1/2 DIA YZ GR8	4
3	HNUT-08-13-YZGR8	HEX NUT 1/2-13 YZ GR8	4
4	FWSHR-08-YZGR8	FLAT WASHER 1/2 DIA YZ GR8	4
5	HCS-08-13-20-YZGR8	HEX CAP SCREW 1/2-13 X 1-1/2 YZ GR8	4
6	9005-04-04	PORT ADAPTER -04 MJ X -04 M BSPP	1
7	6400-12-10	PORT ADAPTER -12MJ X -10 M ORING	1
8	6400-10-10	PORT ADAPTER -10MJ X -10 M ORING	3

\*20022-04 BREAKDOWN ON PAGES 34-39

**TURRET ASSEMBLY (Cont.)**



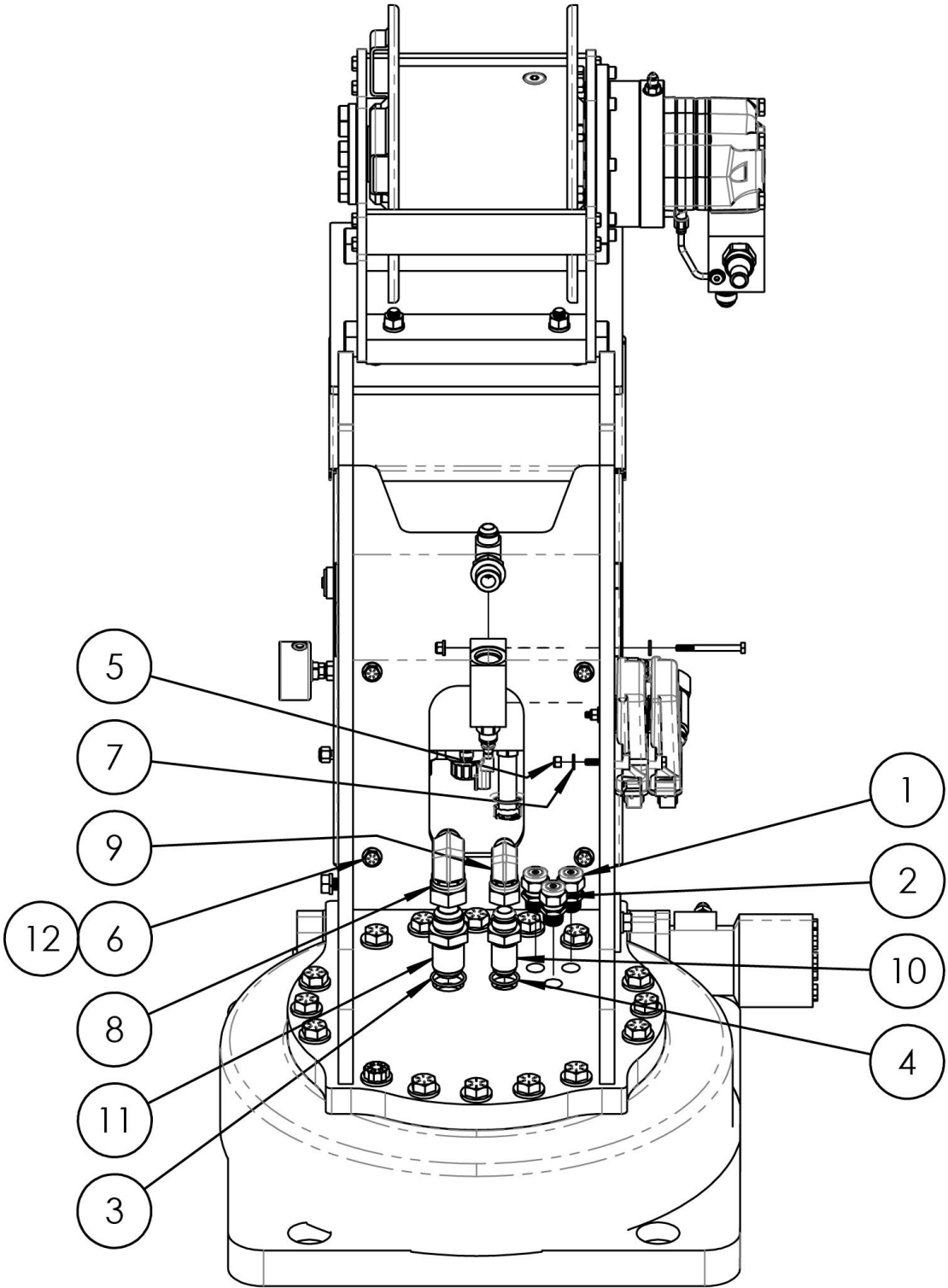
**TURRET ASSEMBLY (Cont.)**

ITEM NO.	PART NUMBER	DESCRIPTION	QTY
1	BDY20016	CONTROL VALVE, CRANE	1
2	BDY20014	SLEW DRIVE 17" LK10000	1
3	BDY20003-01	HYDR. GAUGE 0-5000 PSI	1
4	BDY00155-01	ALARM W/ LIGHT	1
5	BDY00152-30	BACK COVER	1
6	BDY00152	VALVE COVER ASSY.	1
7	FWSHR-06-SS	FLAT WASHER 3/8" SS	12
8	NNUT-06-16-SS	3/8-16 NYLOCK NUT SS	4
9	6600-12-12-12	TEE -12 MJ X -12 FJ SWVL	1
10	6500-10-10	SWVL ADAPTER -10MJ X - 10 M ORING	1
11	6410-06-04	ADAPTER -06 M ORIING X -04 F ORING	1
12	6400-10-06	PORT ADAPTER-10MJ X -06M ORING	2
13	6400-06-06	PORT ADAPTER -06MJ X -06 M ORING	10
14	2406-12-04	REDUCER -12FJ X -04MJ	1

\*BDY20016 BREAKDOWN ON PAGE 42

\*BDY00152 BREAKDOWN ON PAGE 40

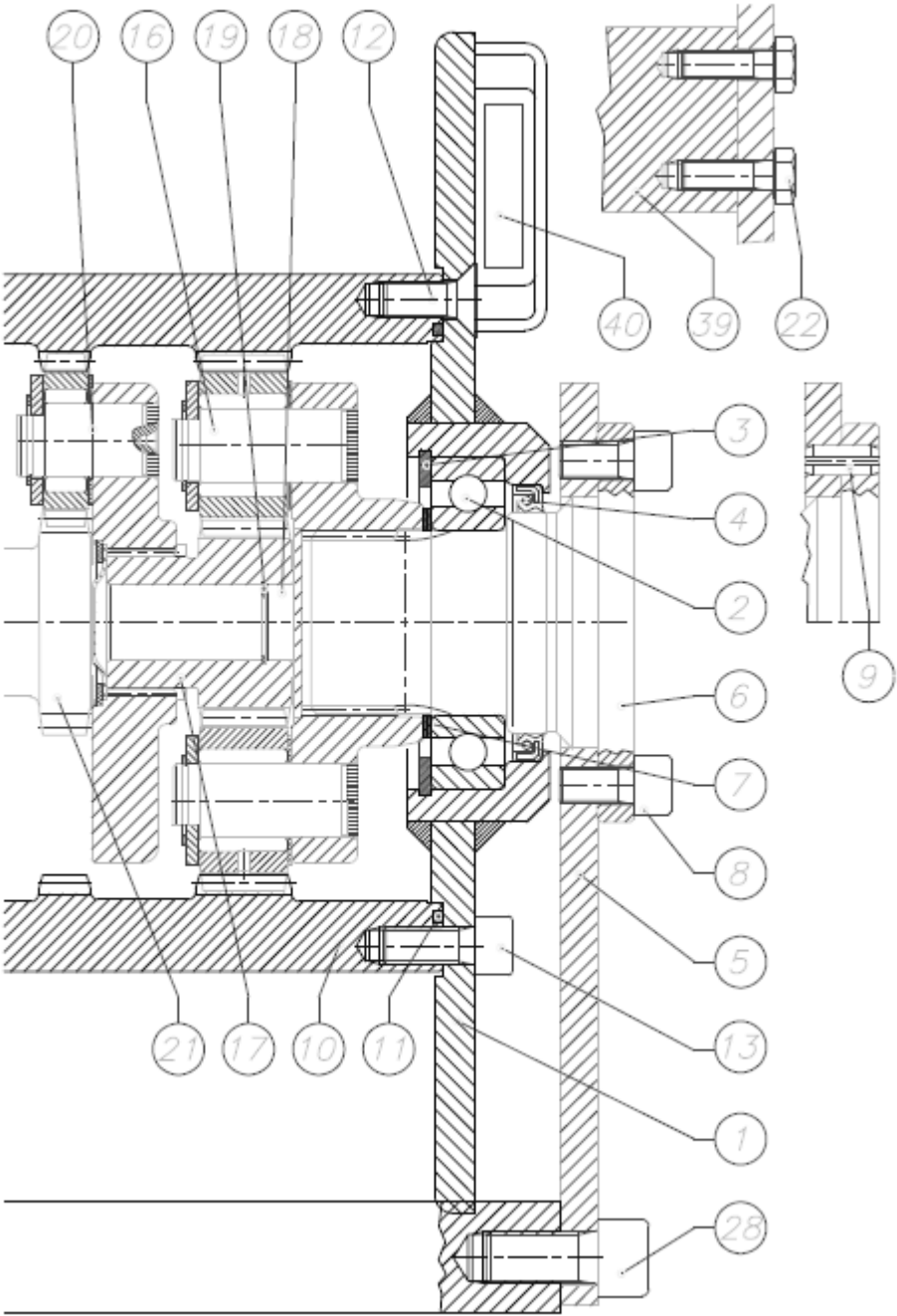
TURRET ASSEMBLY (Cont.)



**TURRET ASSEMBLY (Cont.)**

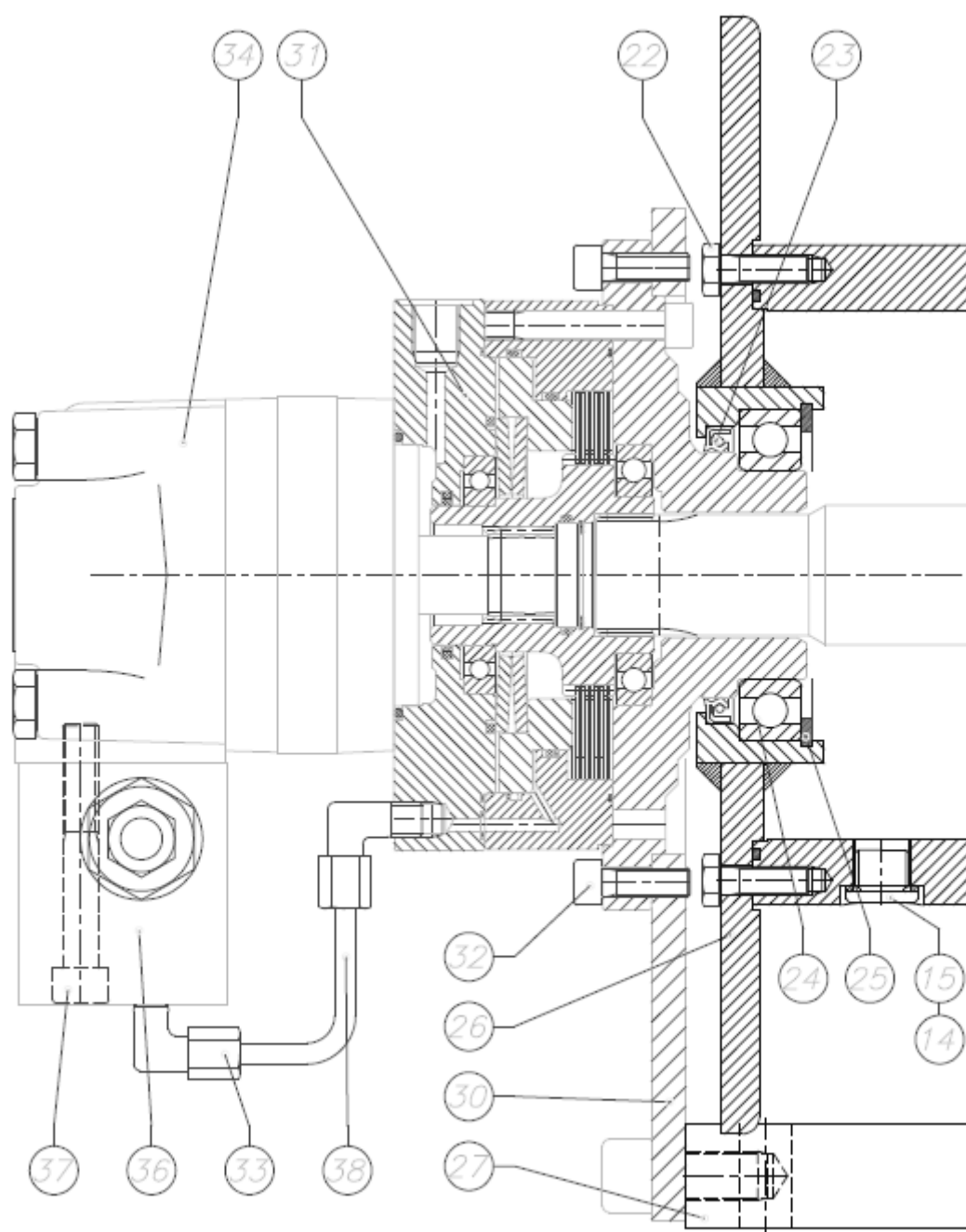
ITEM NO.	PART NUMBER	DESCRIPTION	QTY
1	BDY20017-24	CORD GRIP, STEEL, .38 TO .50 DIA 1/2" K.O.	2
2	BDY20017-23	CORD GRIP, STEEL, .25 TO .38 DIA 1/2" K.O.	1
3	BDY200018-125	O-Ring 3/32 DIA X 1..299 ID X 1..500 OD 70A	1
4	BDY200018-121	O-Ring 3/32 DIA X 1.049 ID X 1.255 OD	1
5	NNUT-04-20-YZGR8	1/4-20 NYLOCK NUT YZ GR8	3
6	FWSHR-06-SS	FLAT WASHER 3/8" YLW SS	4
7	FWSHR-04-YZGR8	1/4 DIA FLAT WASHER YZ GR8	4
8	6500-12-16	ELBOW SWIVEL ADAPTER -12 MJ X -16 FJ	1
9	6500-10-12	ELBOW SWIVEL ADAPTER -10 MJ X -12 FJ	1
10	2700-12-12	BULKHD UNION JIC 12M X X12M	10
11	2700-16-16	BLKHD UNION JIC 16 M X 16 M	1
12	4ES-06-16-12-SS	HEX CAP SCREW 3/8-16 C 1 1/2 SS	4

WINCH



**WINCH (Cont.)**

ITEM NO.	PART NUMBER	DESCRIPTION	QTY
1	BDY32213	BASEMENT	1
2	BDY32214	BALL BEARING 6210 TYPE A	1
3	BDY32160	HOLE SNAP RING Ø90	1
4	BDY32215	SEAL RING 60X75X8 BASL	1
5	BDY32216	FLANGE PROFILE	1
6	BDY32217	ANTIROTATION FLANGE X WINCH A50/60	1
7	BDY32218	THICKNESS SHIM ADJUSTMENT 50X62X1	2
8	BDY32162	HEX SOCKET HEAD CAP SCREW M10X20 12.9 UNI 5931	8
9	BDY32219	ELASTIC PIN SPIROL Ø 8X20 UNI6875	2
10	BDY32220	DRUM A60-62	1
11	BDY32221	O-RING 2-164 (70 SHORE)	2
12	BDY32175	HEX SOCKET COUNTERSUNK HEAD CAP SCREW M10X25 10.9	2
13	BDY32173	HEX SOCKET HEAD CAP SCREW M10X25 12.9 UNI 5931	4
16	BDY32222	GEAR SUBASSEMBLY RE240 R1:3,82 ARG.A50	1
17	BDY32223	SUN GEAR R=3.82 RE 240	1
18	BDY32224	BRONZE PAD Ø20,6X8	1
19	BDY32225	CLIP RING DIA 20MM	1
20	BDY32226	GEAR SUBASSEMBLY RE110 N R=3,48	1
21	BDY32227	SOLAR GEAR A60	1
22	BDY32228	HEX HEAD CAP SCREW M8X25 10.9 UNI 5739	16
28	BDY32229	HEX SOCKET HEAD CAP SCREW M14X30 12.9	8
39	BDY32230	FIXING PLATE	2
40	BDY32231	WEDGE P15 F.6 & S-SE20/27 F.15	1

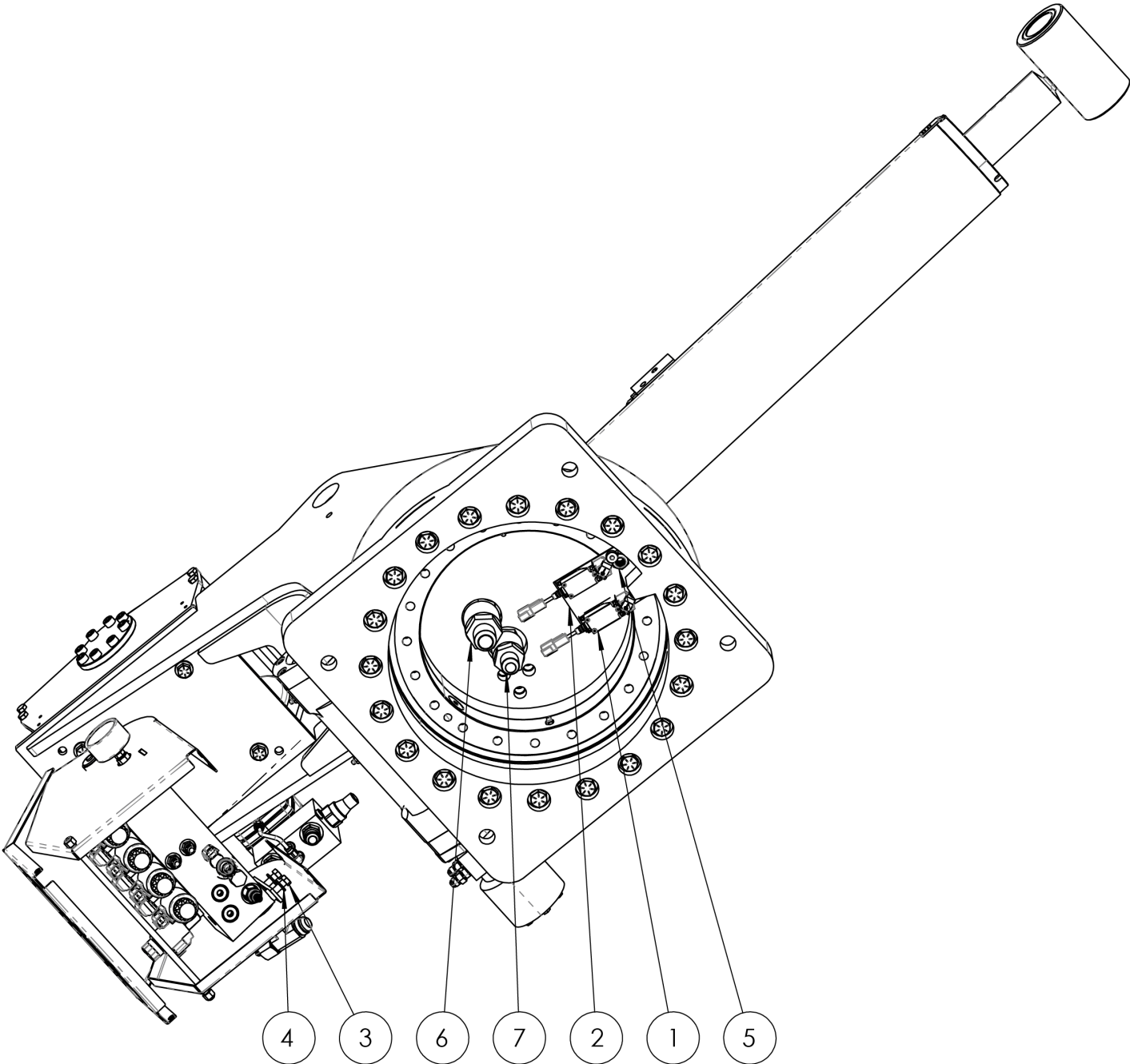
**WINCH (Cont.)**

**WINCH (Cont.)**

ITEM NO.	PART NUMBER	DESCRIPTION	QTY
14	BDY32176	SOFT COPPER WASHER 3/8" UNI 6953	1
15	BDY32177	PLUG TCEI 3/8" GAS DIN908 (STEEL)	1
22	BDY32232	HEX HEAD CAP SCREW M8X25 10.9 UNI 5739	16
23	BDY32233	OIL SEAL 70X85X8 BASL	1
24	BDY32234	BALL BEARING 6012 TYPE B	1
25	BDY32235	HOLE SNAP RING Ø95	1
26	BDY32236	BASEMENT	1
27	BDY32237	BASEPLATE A55 EZ5	2
30	BDY32238	FLANGE PROFILE	1
31	BDY32239	BRAKE GROUP X WINCH A60/SE18AS	1
32	BDY32240	HEX SOCKET HEAD CAP SCREW M8X25 12.9 UNI 5931	8
33	BDY32241	CONNECTOR 90° 1/8"G CONICAL PIPE D6	2
34	BDY32242	MOTOR OMSU 100 3S.151F0579	1
36	BDY32243	VALVE LUEN OWC DOPPIA 7/8"-14UNF S10	1
37	BDY32244	HEX SOCKET HEAD CAP SCREW M10X60 8.8 UNI 5931	2

\*BDY32239 BREAKDOWN ON PAGE 38

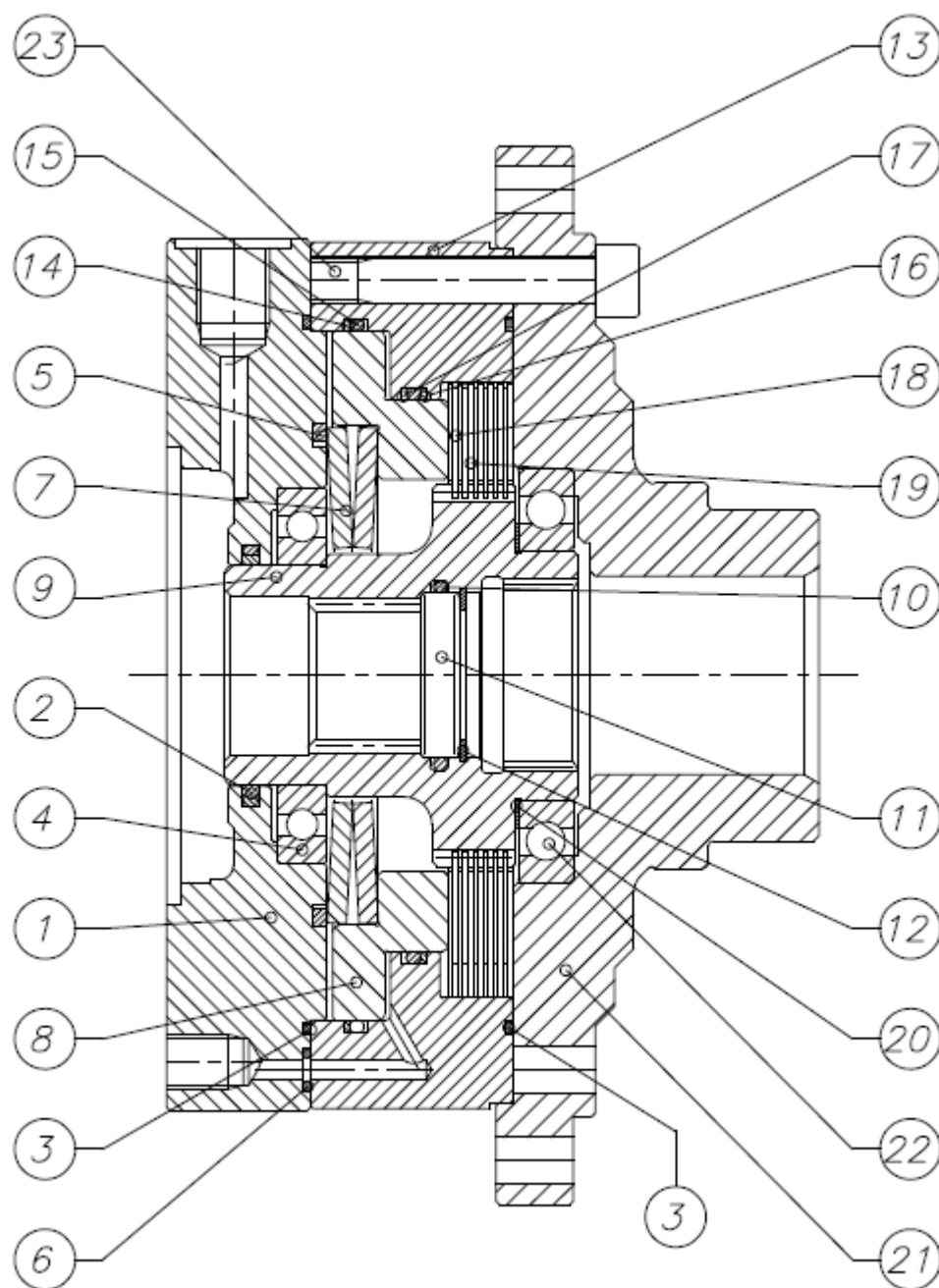
**TURRET ASSEMBLY (Cont.)**





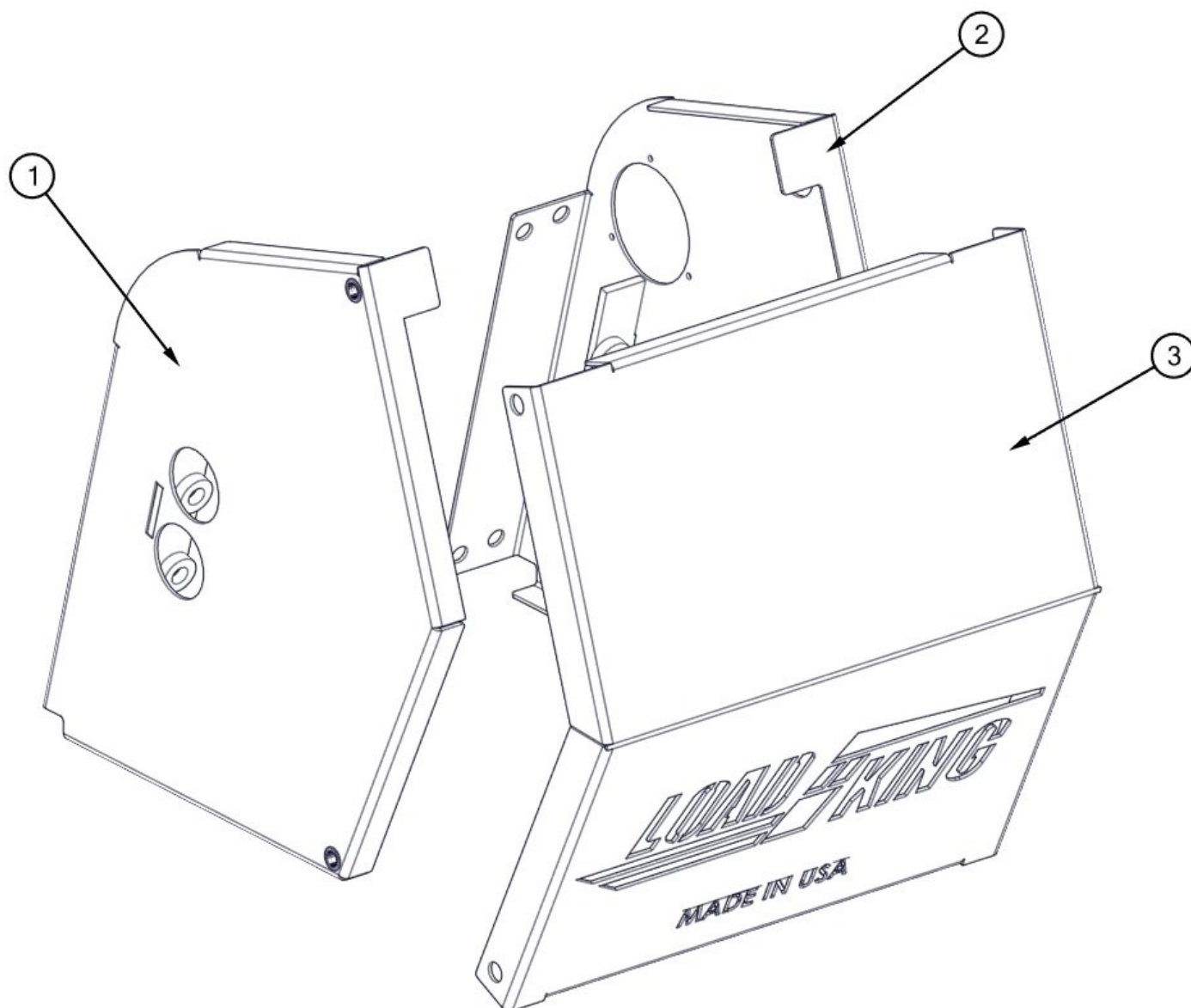
**TURRET ASSEMBLY (Cont.)**

ITEM NO.	PART NUMBER	DESCRIPTION	QTY
1	BDY20019	SAFETY LIMIT SWITCH	2
2	BDY00149-01	ROTATION STOP PLATE	1
3	HCS-06-16-SS	3/8-16 X 3-1/2 HEX CAP SCREW SS	2
4	FWSHR-06-SS	FLAT WASHER 3/8" SS	2
5	NNUT-10-11-YZGR8	NYLOCK NUT 5/8-11 YZ GR8	2
6	16MJ-16FJFB-LX	LIVE SWIVEL GATES -16	1
7	12MJ-12FJFB-LX	LIVE SWIVEL GATES -12	1

**WINCH BRAKE**

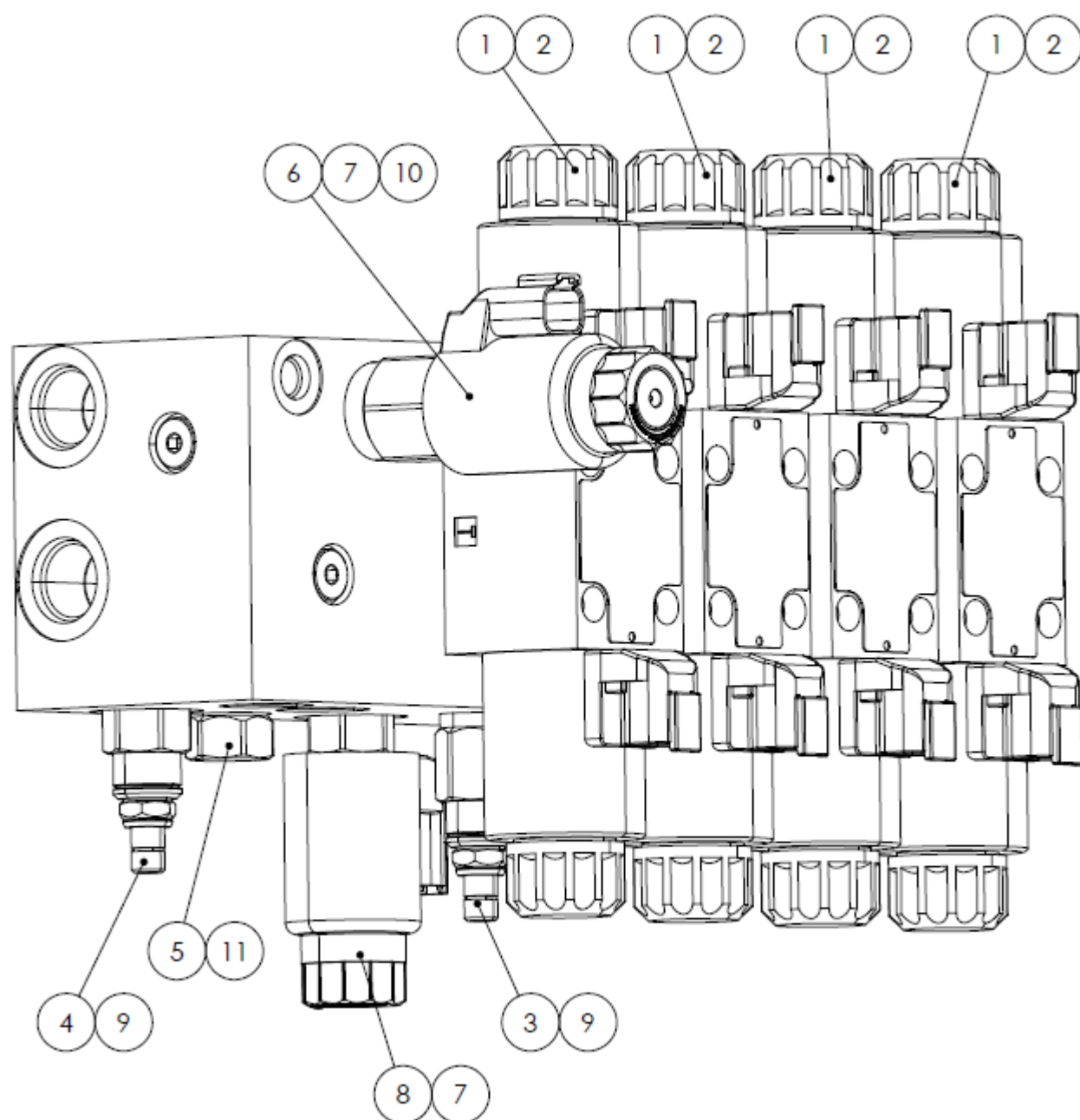
**WINCH BRAKE (Cont.)**

ITEM NO.	PART NUMBER	DESCRIPTION	QTY
1	BDY32245	FIXING FLANGE MOTOR A60-80/SE35AS2	1
2	BDY32246	SEAL ROTO-GLYD RING S 56131-0400-A42-N	1
3	BDY32247	O-RING 2-049	2
4	BDY32248	BALL BEARING 16008	1
5	BDY32249	SHOULDER RING BR 90 FOR HOLE	1
6	BDY32181	O-RING 2-008	1
7	BDY32250	CUP SPRING 90X46X3,5 DIN 2093	2
8	BDY32251	BRAKE PISTON S15	1
9	BDY32252	HOLDER DISC GEAR S15 OMSU	1
10	BDY32253	O-RING 2-123 PARKER (N674-70)	1
11	BDY32254	SHIMMING PAD S15 Ø30X7	1
12	BDY32255	HOLE SNAP RING Ø30	1
13	BDY32256	BRAKE BODY S15	1
14	BDY32257	ANTIEXTRUSION PARBAK 8-159	1
15	BDY32258	O-RING 2-159 N 674-70 (PARKER)	1
16	BDY32259	ANTIEXTRUSION FLUORTEN T-2684 (8-155)	1
17	BDY32260	O-RING 2-155 N 741-75 (PARKER)	1
18	BDY32261	LAMINAR STEEL PLATE TH.0,8 S15	7
19	BDY32262	BRONZE DISC SP.1 F5-F6 BRAKE	6
20	BDY32263	THICKNESS SHIM ADJUSTMENT 45X55X0,5	1
21	BDY32264	CARRIER FLANGE X WINCH A60 OMSU3°S	1
22	BDY32265	BALL BEARING 16009 KIND B	1
23	BDY32266	HEX SOCKET HEAD CAP SCREW M8X65 12.9 UNI 5931	8

**VALVE COVER**

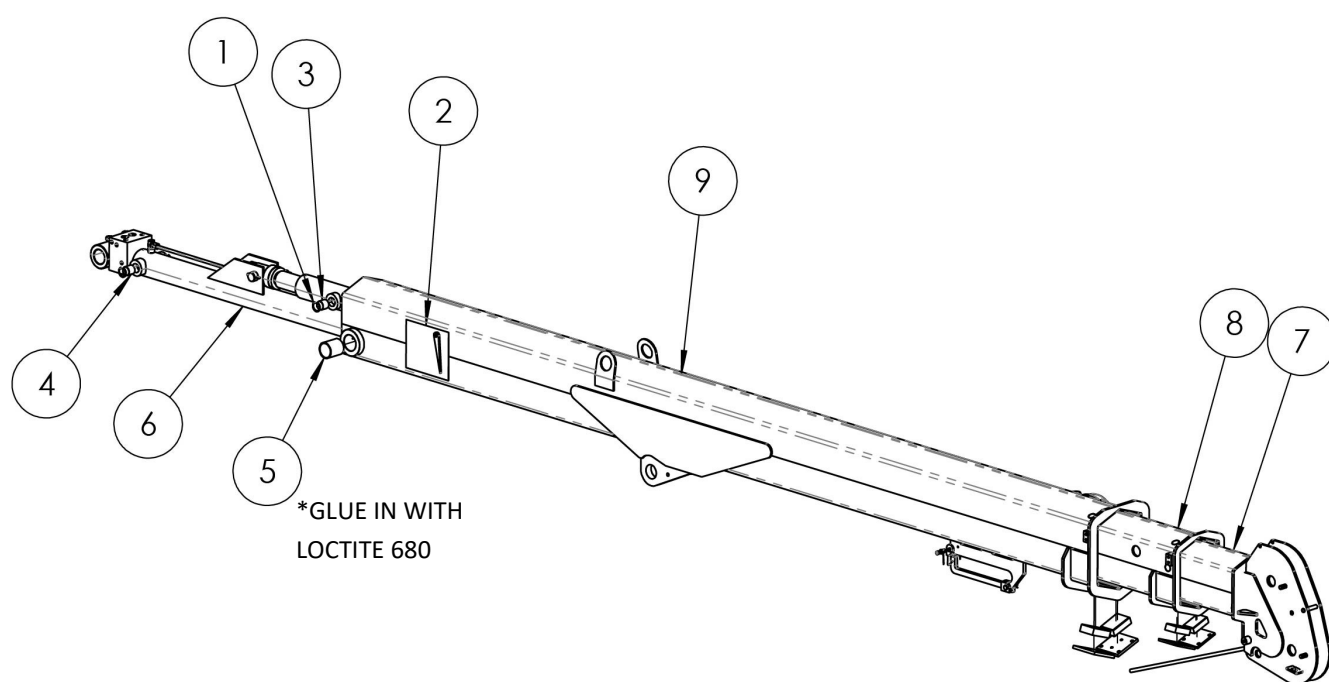
**VALVE COVER (Cont.)**

ITEM NO.	PART NUMBER	DESCRIPTION	QTY
1	BDY00152-20	VALVE COVER LFT ASSY.	1
2	BDY00152-10	VALVE COVER RT ASSY.	1
3	BDY00152-30	BACK COVER	1

**CONTROL VALVE**

**CONTROL VALVE (Cont.)**

ITEM NO.	PART NUMBER	DESCRIPTION	QTY
1	BDY32116	CONTROL VALVE	4
2	BDY20061	12V COIL	REF
3	BDY32111	RELIEF VALVE 2400 PSI	1
4	BDY20055	RELIEF VALVE 3000 PSI	1
5	BDY20054	FLOW CONTROL VALVE	1
6	BDY32112	PILOT OP. THROTTLE VALVE	1
7	BDY20060	12V COIL	REF
8	BDY20052	DUMP VALVE	1
9	BDY32113	SEAL KIT	REF
10	BDY32114	SEAL KIT	REF
11	BDY32115	SEAL KIT	REF

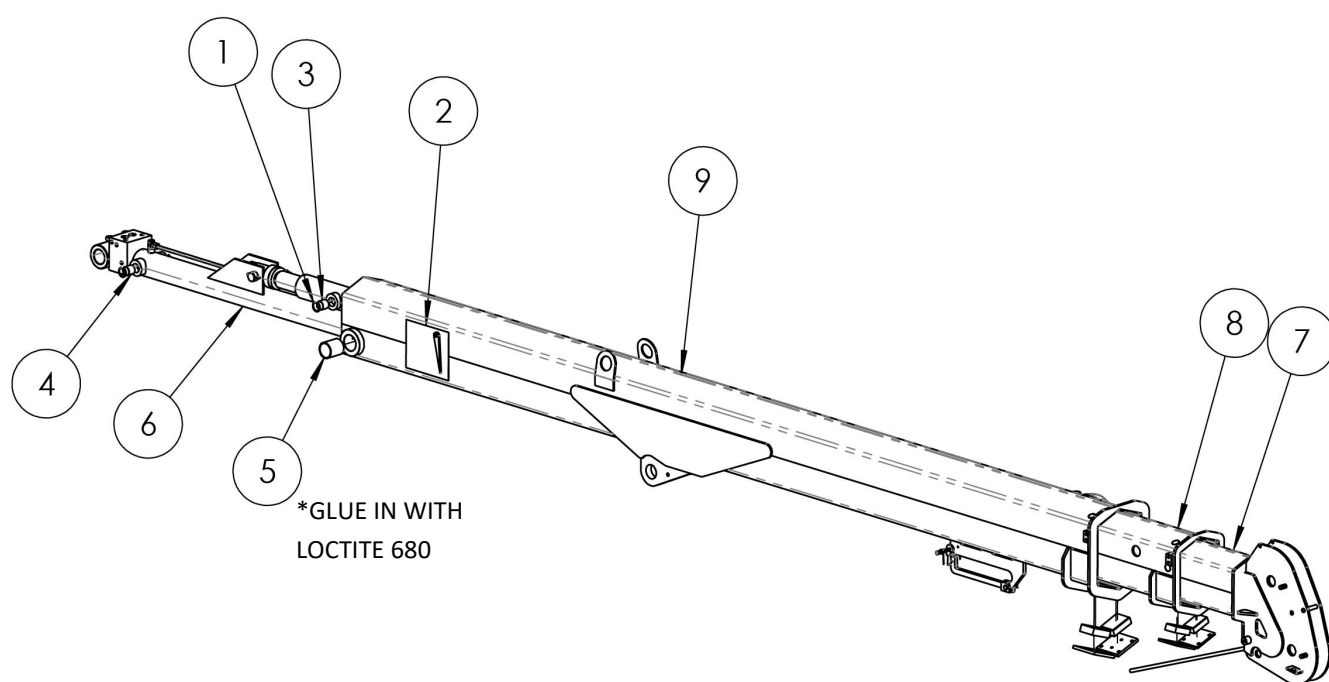
**BOOM ASSEMBLY—10022**



**BOOM ASSEMBLY—10022 (Cont.)**

ITEM NO.	PART NUMBER	DESCRIPTION	QTY
1	BDY00221-18	INTERNAL RETAINING RING	4
2	BDY00150	BOOM ANGLE KIT	1
3	BDY00143-02	PIN 1.25 DIA X 1.13 LG	2
4	BDY00143-01	PIN 1.25 DIA X 1.156 LG	2
5	BDY00142-01	GARMAX GM3438-032 2.00 ID X 2.25 OD X 2.00 LG	2
6	BDY00307	EXTENSION CYLINDER LK10022	1
7	BDY00105	3RD STG BOOM WLDMT.	1
8	BDY00104	2ND STG BOOM WLDMT.	1
9	BDY00103	1ST STG BOOM WLDMT	1

\*EXTENSION CYLINDER BREAKDOWN ON PAGE 60

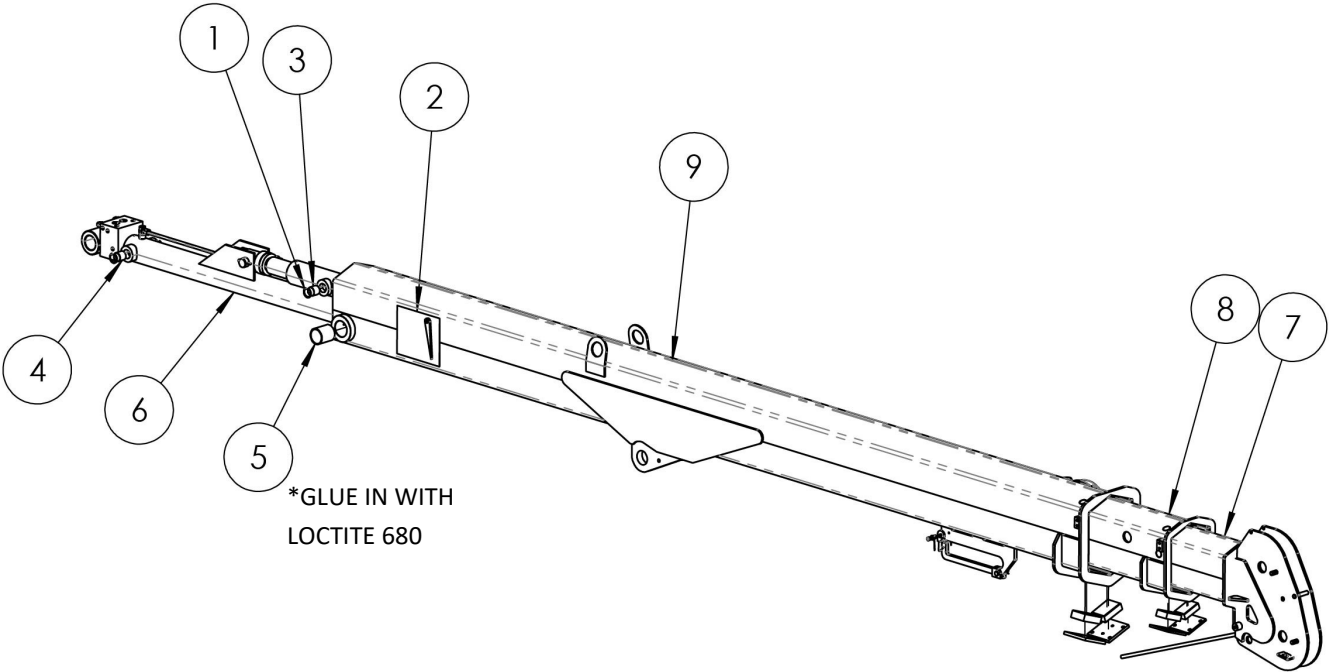
**BOOM ASSEMBLY—10026**

**BOOM ASSEMBLY—10026 (Cont.)**

ITEM NO.	PART NUMBER	DESCRIPTION	QTY
1	BDY00221-18	INTERNAL RETAINING RING	4
2	BDY00150	BOOM ANGLE KIT	1
3	BDY00143-02	PIN 1.25 DIA X 1.13 LG	2
4	BDY00143-01	PIN 1.25 DIA X 1.156 LG	2
5	BDY00142-01	GARMAX GM3438-032 2.00 ID X 2.25 OD X 2.00 LG	2
6	BDY00398	EXTENSION CYLINDER LK10026	1
7	BDY00105	3RD STG BOOM WLDMT.	1
8	BDY00104	2ND STG BOOM WLDMT.	1
9	BDY00103	1ST STG BOOM WLDMT	1

\*EXTENSION CYLINDER BREAKDOWN ON PAGE 60

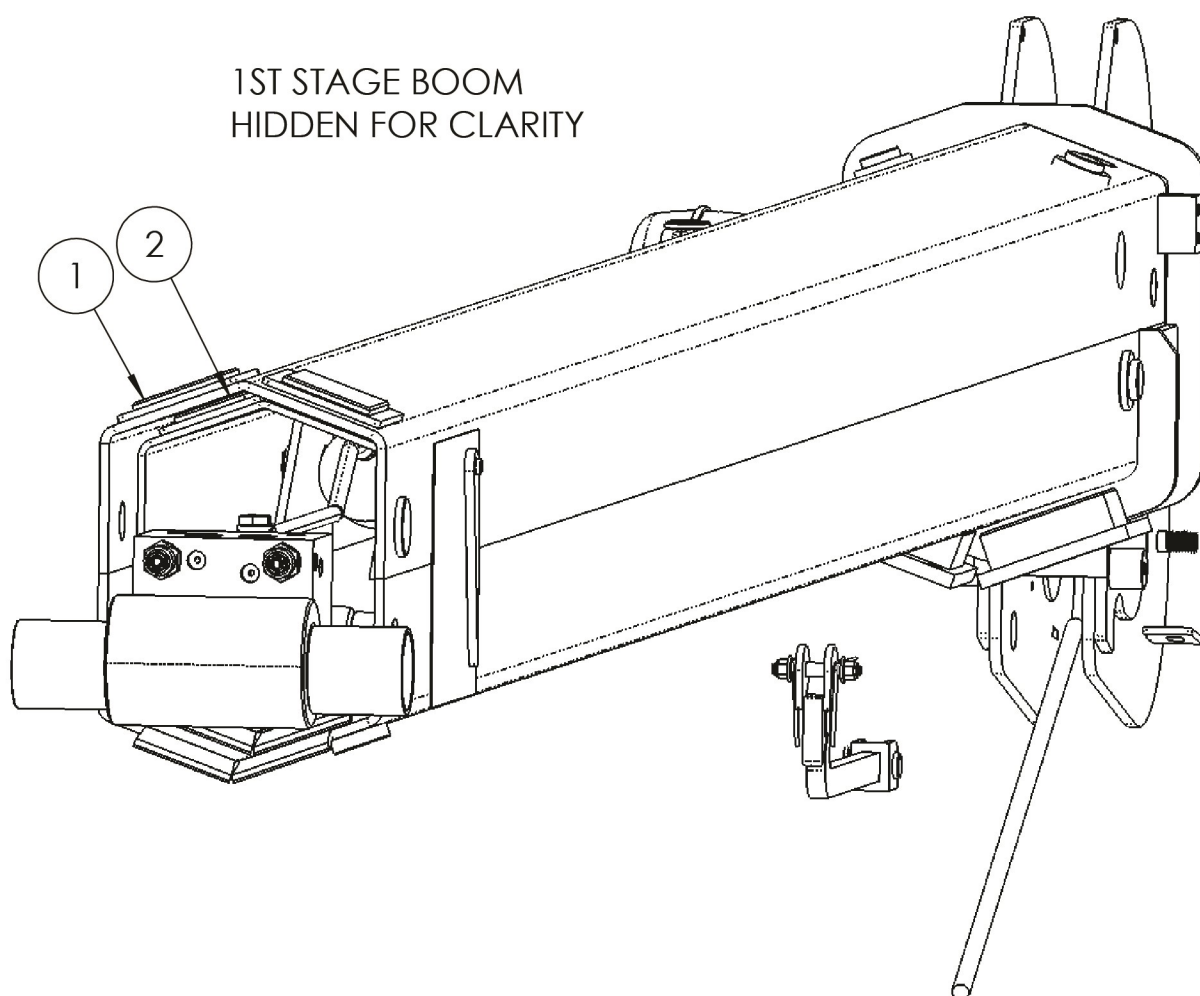
**BOOM ASSEMBLY—10030**



**BOOM ASSEMBLY—10030 (Cont.)**

ITEM NO.	PART NUMBER	DESCRIPTION	QTY
1	BDY00221-18	INTERNAL RETAINING RING	4
2	BDY00150	BOOM ANGLE KIT	1
3	BDY00143-02	PIN 1.25 DIA X 1.13 LG	2
4	BDY00143-01	PIN 1.25 DIA X 1.156 LG	2
5	BDY00142-01	GARMAX GM3438-032 2.00 ID X 2.25 OD X 2.00 LG	2
6	BDY00107	EXTENSION CYLINDER LK10030	1
7	BDY00105	3RD STG BOOM WLDMT.	1
8	BDY00104	2ND STG BOOM WLDMT.	1
9	BDY00103	1ST STG BOOM WLDMT	1

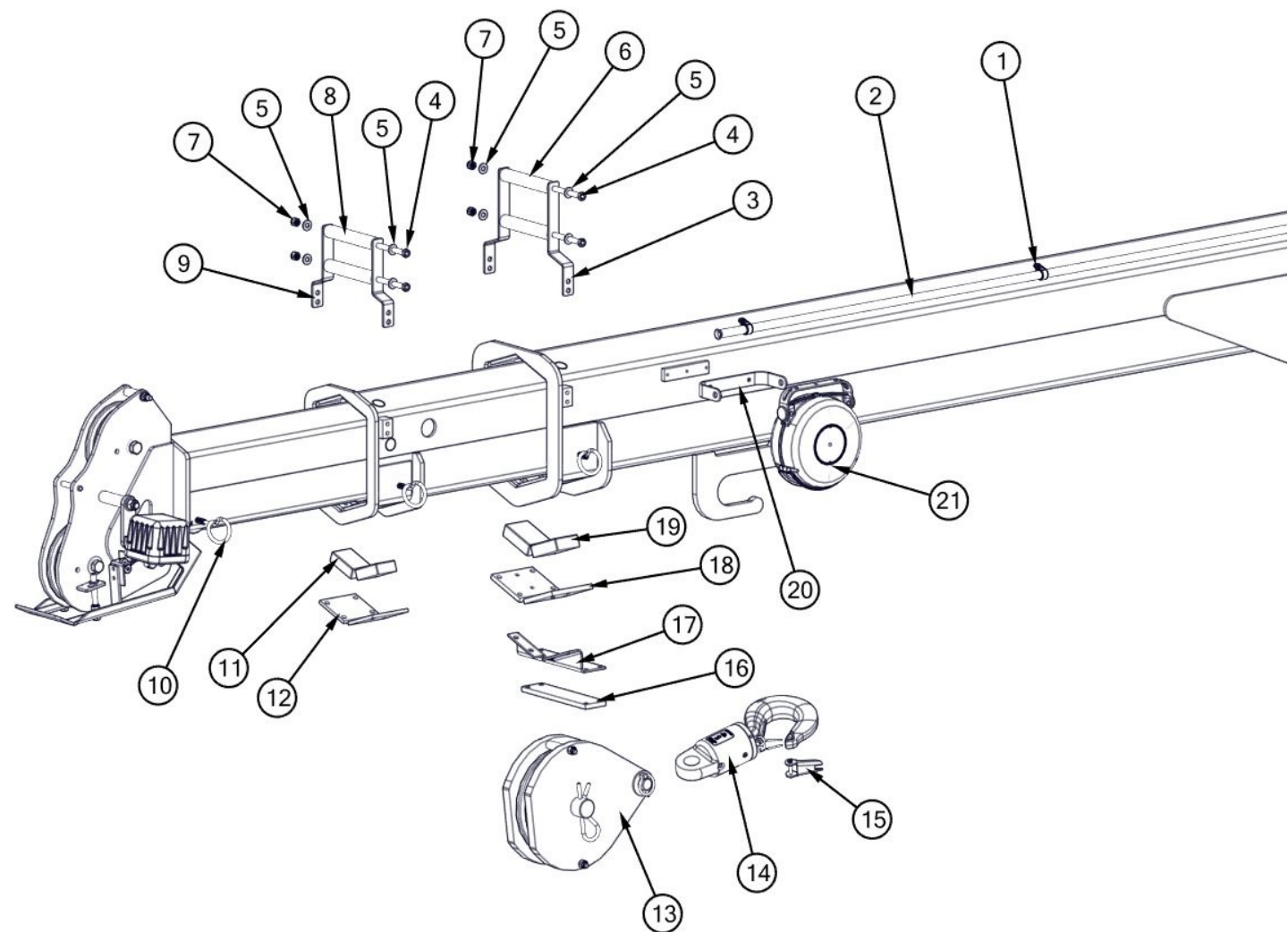
\*EXTENSION CYLINDER BREAKDOWN ON PAGE 60

**BOOM ASSEMBLY (Cont.)**

**BOOM ASSEMBLY (Cont.)**

ITEM NO.	PART NUMBER	DESCRIPTION	QTY
1	BDY00048-06	RUB PAD 2.44 x 3.44 x 0.38	2
2	BDY00048-05	RUB PAD 1.94 x 2.94 x 0.38	2

**BOOM ASSEMBLY (Cont.)**



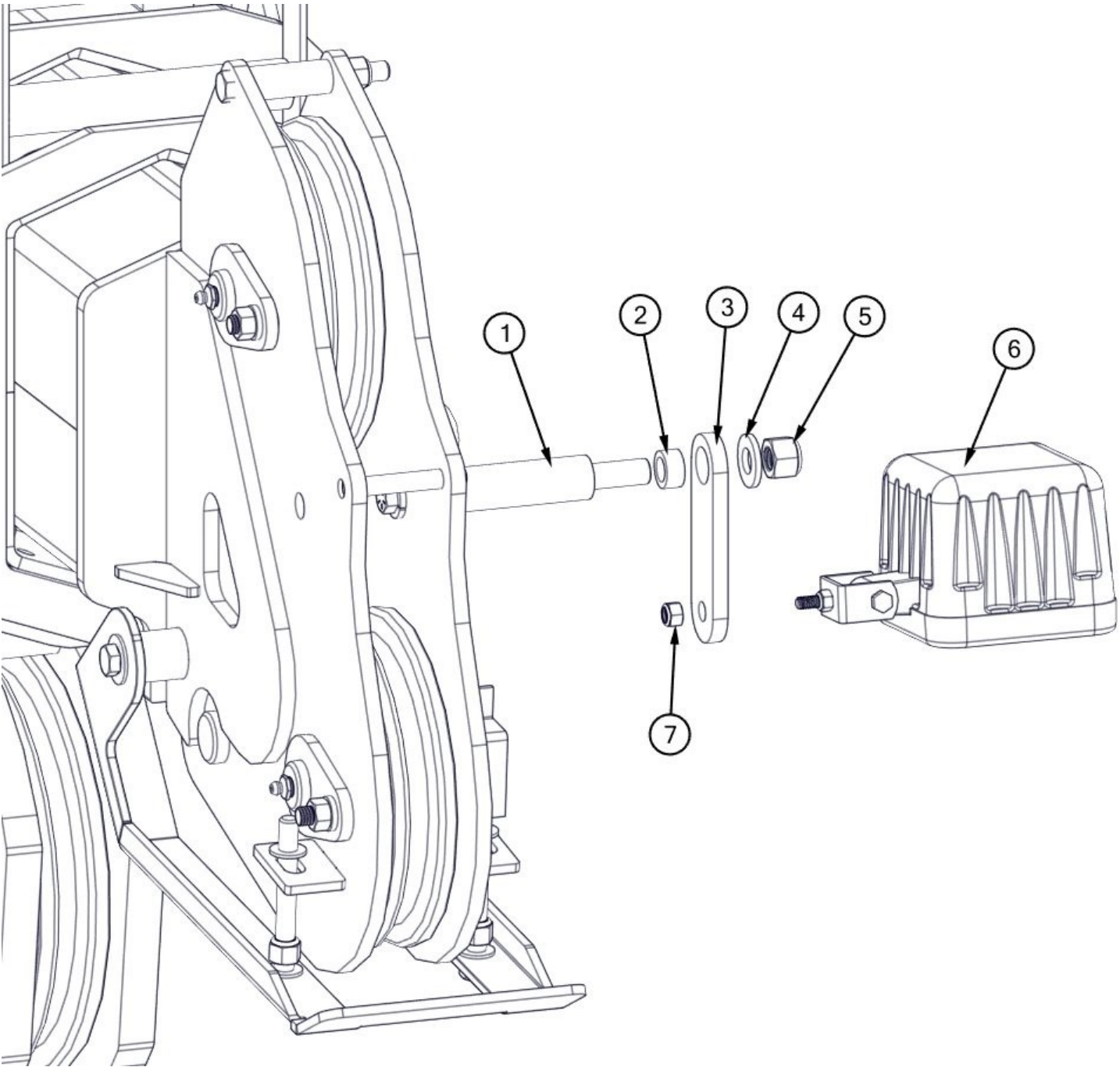


**BOOM ASSEMBLY (Cont.)**

ITEM NO.	PART NUMBER	DESCRIPTION	QTY
1	BDY32069	LOOP CLAMP, VIB DAMPING, ZN PLD STEEL, 5/8" ID, 1 5/8" LG	5
2	BDY32033	STEEL TUBING, SMLS, 5/8" OD, 0.049" WALL THKNS, 128" LG	1
3	BDY32129	ROPE GUIDE BRACKET, 1ST STG	2
4	HCS-06-16-64-YZGR8	3/8-16 X 8 HEX CAP SCREW YLW ZN GR8	4
5	FWSHR-06-YZGR8	FLAT WASHER 3/8" SAE YLW ZN GR8	8
6	BDY00145-02	ROLLER, ROPE GUIDE	2
7	NNUT-06-16-YZGR8	3/8-16 NYLOCK NUT GR8 YLW ZN	4
8	BDY00145-02	ROLLER, ROPE GUIDE	2
9	BDY32128	ROPE GUIDE BRACKET, 2ND STG	2
10	BDY20050	ROUTING RING 1/4-20, 1-1/4" EYE DIA	3
11	BDY00048-04	RUB PAD 1.94 x 2.94 x 0.94	2
12	BDY00108-02	PAD KEEPER	2
13	BDY00236	SNATCH BLOCK 5.25 TON	1
14	BDY32209	5 TON SWIVEL	1
15	BDY32210	SWIVEL HOOK LATCH	1
16	BDY00239-02	RUB PAD, BLOCK BUMPER	1
17	BDY00239-01	FRAME, BLOCK BUMPER	1
18	BDY00108-01	PAD KEEPER	2
19	BDY00048-03	RUB PAD 2.44 x 3.44 x 1.00	2
20	BDY32094	MOUNTING BRACKET, CABLE REEL, SERVICE CRANE	1
21	BDY20026	CABLE REEL	1

\*BDY00236 BREAKDOWN ON PAGE 62

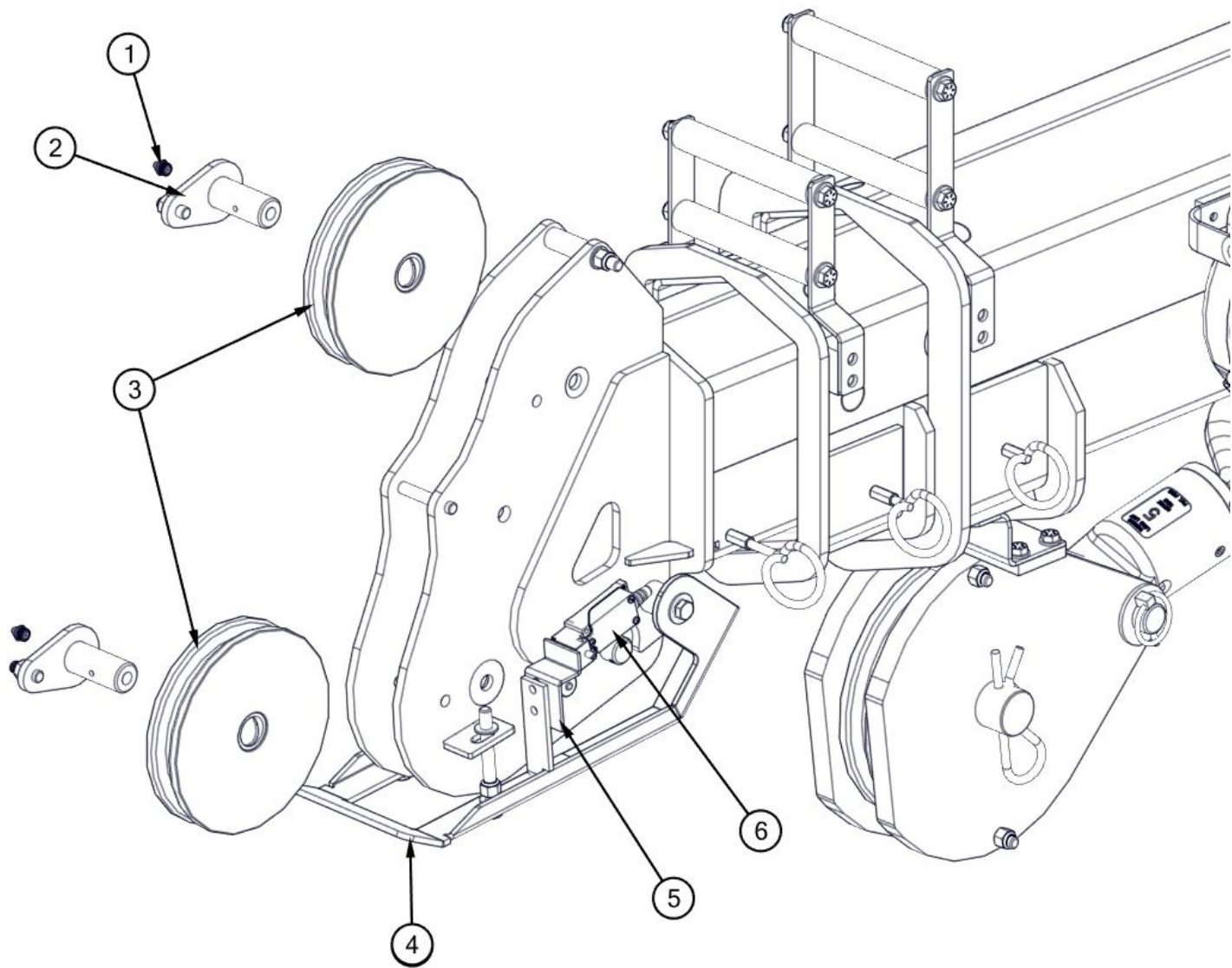
**BOOM ASSEMBLY (Cont.)**



**BOOM ASSEMBLY (Cont.)**

ITEM NO.	PART NUMBER	DESCRIPTION	QTY
1	BDY00147-01	LIGHTING STANDOFF	1
2	BDY20001-08	SLEEVE BEARING 1/2 ID 3/4 OD 3/8 W	1
3	BDY00147-02	LIGHT MTG. ARM	1
4	FWSHR-08-YZGR8	FLAT WASHER 1/2 DIA YZ GR8	1
5	1003571	NYLOCK NUT 1/2-13 GR 5 ZN	1
6	BDY20123	WORK LIGHT, LED, 2520 lm, 3.75in SQ, 10 - 30VDC	1
7	NNUT-04-20-YZGR8	1/4-20 NYLOCK NUT YZ GR8	1

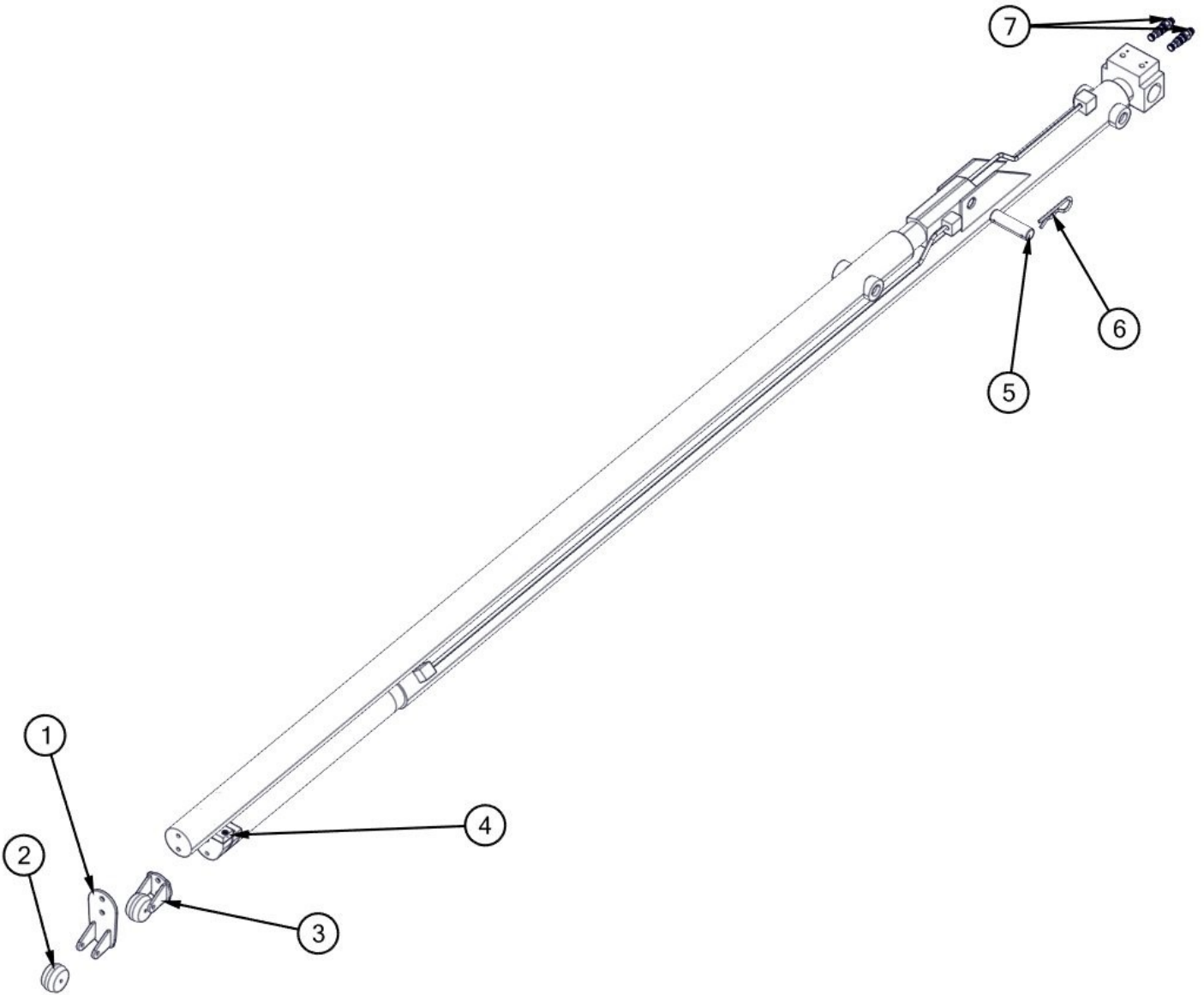
**BOOM ASSEMBLY (Cont.)**



**BOOM ASSEMBLY (Cont.)**

ITEM NO.	PART NUMBER	DESCRIPTION	QTY
1	1001350	ZERK, GREASE FITTING STRAIGHT STEEL 1/8 NPT	2
2	BDY00131-01	SHAFT WLDMT 2" X 3	2
3	BDY00127	SHEAVE ASSEMBLY, 7/16" ROPE DIA, 8.7" OD, 1-1/2" WD	2
4	BDY00144	ANTI-TWO BLOCK WLDMT.	1
5	BDY00144-03	A2B TARGET	1
6	BDY20019	SAFETY LIMIT SWITCH	1

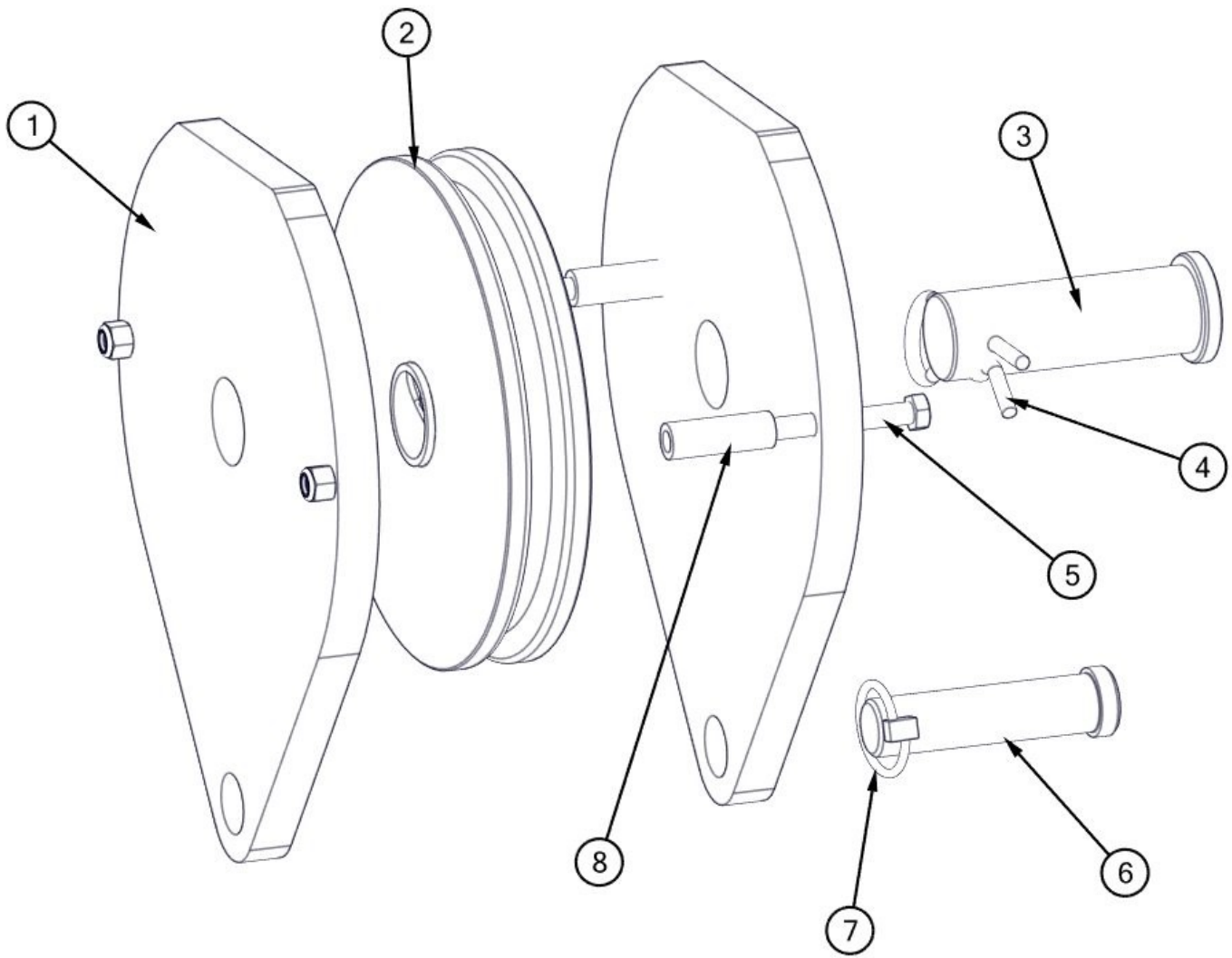
**EXTENSION CYLINDER**



**EXTENSION CYLINDER (Cont.)**

ITEM NO.	PART NUMBER	DESCRIPTION	QTY
1	1027506	WELDMENT,UPPER ROLLER	1
2	BDY00382	WHEEL, EXTEND CYLINDER	2
3	1027502	WELDMENT, LOWER ROLLER	1
4	1027499	WEAR PAD, SADDLE	1
5	BDY00107-05	CYLINDER PIN	1
6	BDY20002-18	HAIR PIN 1-1/8" - 1-1/2" DIA X 1/4" WIRE DIA	2

**SNATCH BLOCK**





**SNATCH BLOCK (Cont.)**

ITEM NO.	PART NUMBER	DESCRIPTION	QTY
1	BDY00237-01	SNATCH BLOCK SIDE PLATE	2
2	BDY00127	SHEAVE ASSEMBLY, 7/16" ROPE DIA, 8.7" OD, 1-1/2" WD	1
3	BDY00238-01	MOD. CLEVIS PIN 1.50 DIA X 3 LG	1
4	BDY20002-18	HAIR PIN 1-1/8" - 1-1/2" DIA X 1/4" WIRE DIA	1
5	HCS-06-16-32-YZGR8	3/8-16 X 4 HEX CAP SCREW YLW ZN GR8	2
6	BDY32117	CLEVIS PIN, 1" DIA, 3.68" USABLE LT, ZN PLD, 1004-1045 CS	1
7	BDY20025-650	LINCH PIN 3/16 PIN X 1-1/8" OD	1
8	BDY32118	SPACER, 5/8" OD X 3/8" ID X 1 7/8" L, CS, ZN PLD	2

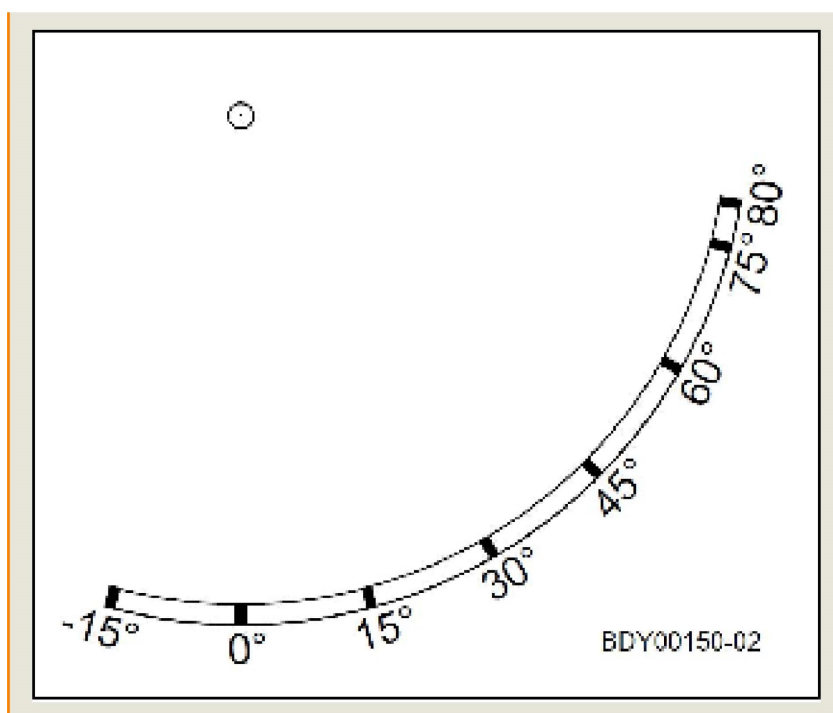
---

**LOAD KING 10000 SERVICE CRANE LABELS**

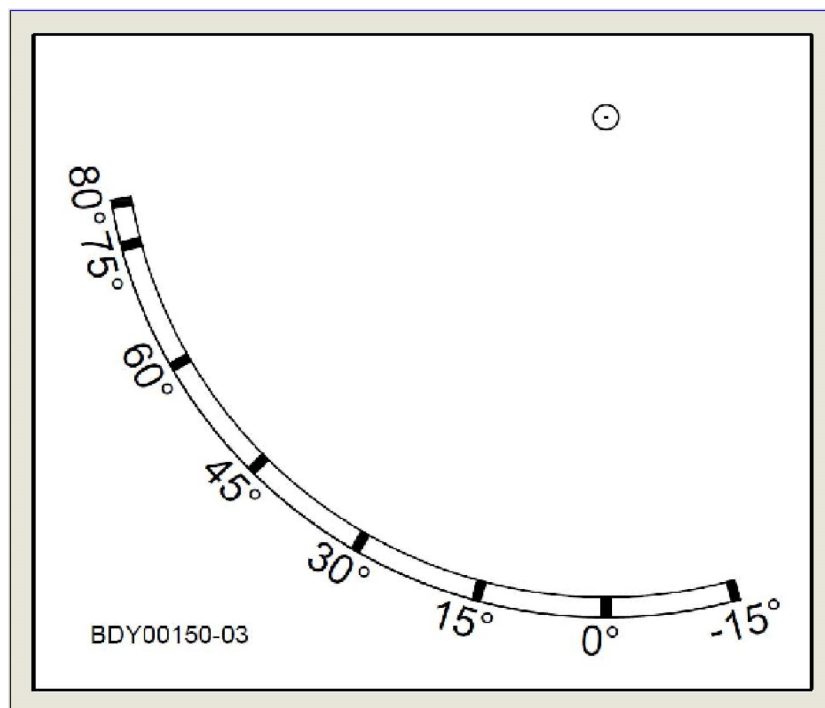
---



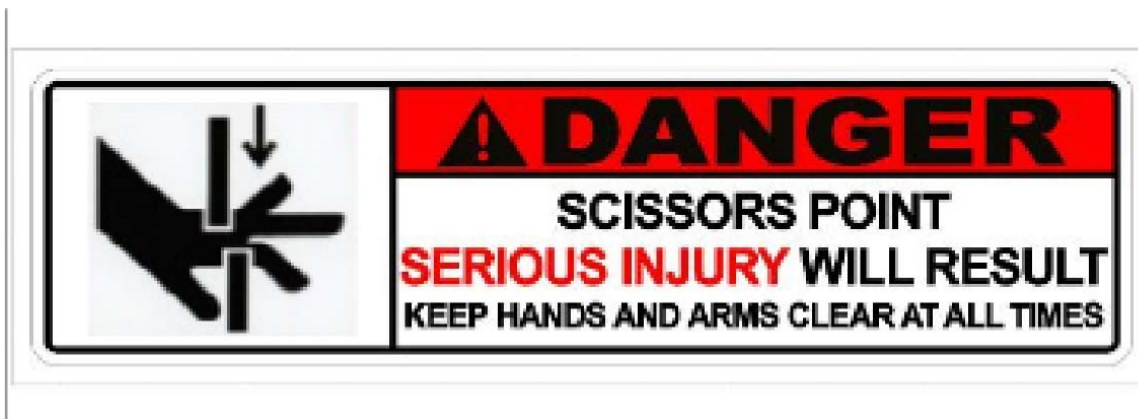
BDY32006-14  
W 7.0 X H 2.30  
(2 EACH)



**BDY00150-02**  
**W 8.35 X H 7.10**  
**(1 EACH)**



**BDY00150-03**  
**W 8.35 X H 7.10**  
**(1 EACH)**



**BDY32006-05**  
**W 8.70 X H 2.45**  
**(2 EACH)**



**BDY32006-10**  
**W 1.5 X H 1 (PER ARROW)**  
**(1 EACH)**



**BDY32006-12**  
**W 3.20 X H 1.55**  
**(2 EACH)**



**BDY32006-06**  
**W 3.20 X H 1.55**  
**(2 EACH)**



**BDY32006-11**  
**W 2.50 X H 1.80**  
**(1 EACH)**



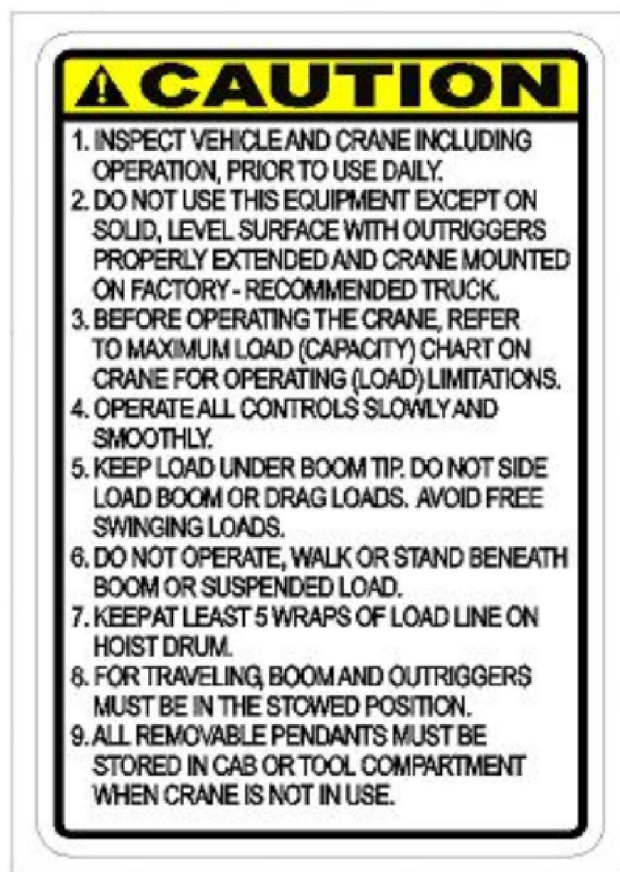
**BDY32006-08**  
**W 2.95 X H 4.0**  
**(2 EACH)**



**BDY32006-09**  
**W 4 X H 2.5**  
**(2 EACH)**



**BDY32006-07**  
**W 4.20 X H 1.45**  
**(2 EACH)**



**BDY32006-13**  
**W 3.20 X H 4.70**  
**1 EACH**



**BDY32006-02**  
**W 1.70 X H 1.35**  
**(2 EACH)**

## LOAD KING WARRANTY

*Load King (herein after referred to as the COMPANY) warrants all products manufactured by it and purchased by you to be free from defects in material and manufacture at the time of shipment, for one (1) year from date of delivery. The COMPANY will furnish replacements for such parts as the COMPANY finds to have been defective at the time of delivery or, at the COMPANY's option, will make or authorize repairs to such parts, provided that, upon request, such parts are returned, transportation is prepaid to the factory from which they were shipped.*

*This warranty shall not apply to any Product which has been subjected to misuse, misapplication, overloading, neglect (including but not limited to use of unauthorized parts or attachments), adjustments or repair. Engines, motor, tires, wheels, suspensions, axles, etc. and any accessories furnished with or used in the COMPANY's products, but which are not manufactured by the COMPANY, are not warranted by the COMPANY but are sold only with the express warranty, if any, or the manufacturers thereof. This warranted is limited to the first purchaser/user and is not transferable.*

**THE FOREGOING IS IN LIEU OF ALL OTHER WARRANTIES, WHETHER EXPRESSED OR IMPLIED (INCLUDING, WITHOUT LIMITATIONS, OF MERCHANTABILITY AND FITNESS OF ANY PRODUCT FOR A PARTICULAR PURPOSE), AND OF ANY OTHER OBLIGATION OR LIABILITY ON THE PART OF THE COMPANY. THERE ARE NO WARRANTIES WHICH EXTEND BEYOND THE DESCRIPTION OF THE FACE THEREOF.**

## LOAD KING WARRANTY DATA RECORD

Service Crane Warranty Form Submission		Date	
Date of Delivery			
Model Number			
S/N			
Dealer			
Address			
Customer			
Address			

Record this information at the time that warranty registration form is completed and returned to Load King





# ***LOAD/KING***

